

PRODUCT INFORMATION PACKET



Model No: 140445.00

Catalog No: 140445.00

Fan and Blower Motor, 5 & 2.50 HP, 3 Ph, 60 & 60 Hz, 460 & 460 V, 1800 & 1800 RPM, 215T Frame, TEFC



Regal and Leeson are trademarks of Regal Rexnord Corporation or one of its affiliated companies.

©2023 Regal Rexnord Corporation, All Rights Reserved. MC017097E



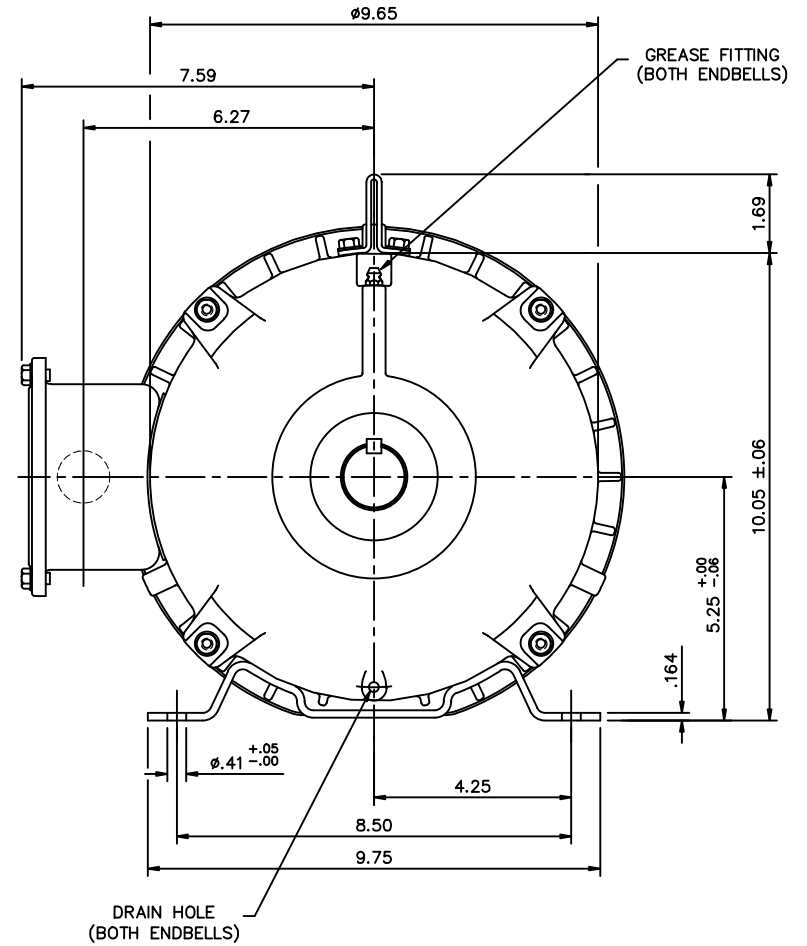
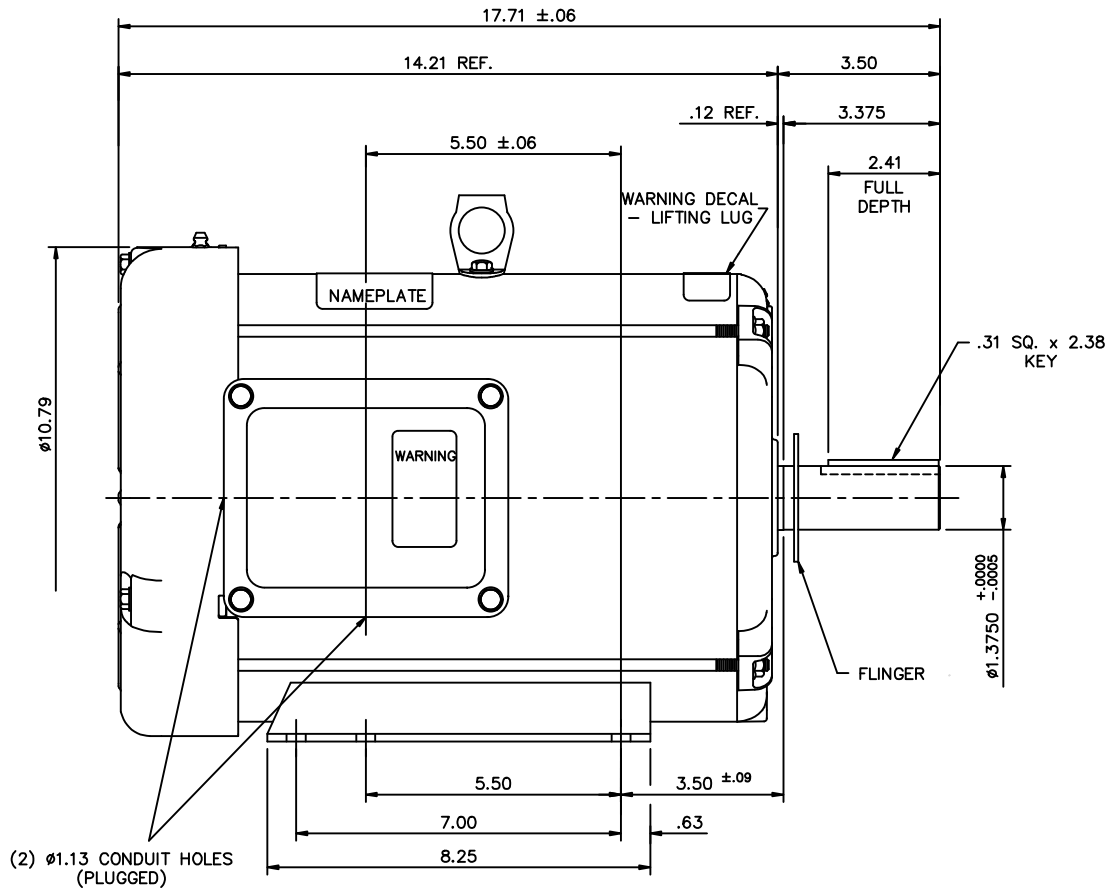


Nameplate Specifications

Phase	3	Output HP	5 & 2.50 Hp
Output KW	3.7 & 1.9 kW	Voltage	460 & 460 V
Speed	1725 & 850 rpm	Service Factor	1.0 & 1.0
Frame	215T	Enclosure	Totally Enclosed Fan Cooled
Thermal Protection	No Protection	Efficiency	80 & 74 %
Ambient Temperature	40 °C	Frequency	60 & 60 Hz
Current	6.7 & 7 A	Power Factor	88.8
Duty	Continuous	Insulation Class	F
Design Code	NO DESIGN CODE	KVA Code	H
Drive End Bearing Size	6207	Opp Drive End Bearing Size	6206
UL	Recognized	CSA	Y
CE	N	IP Code	43
Number of Speeds	1		

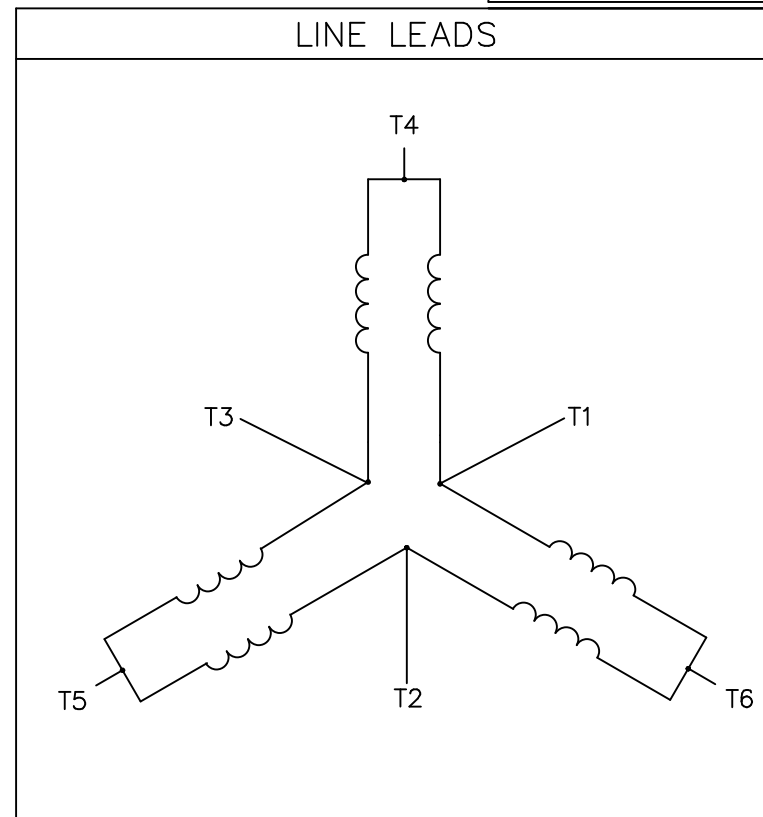
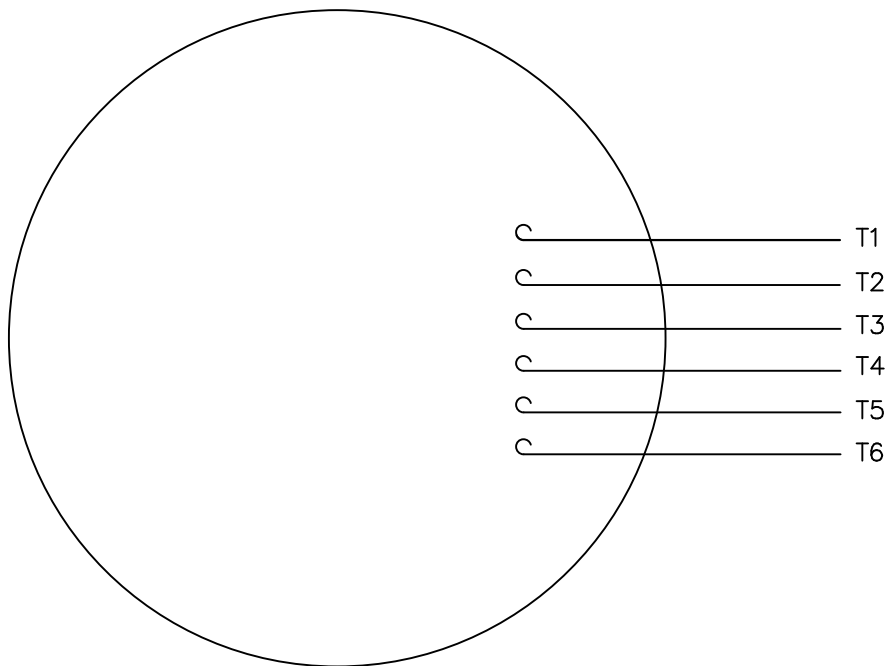
Technical Specifications

Electrical Type	Squirrel Cage Induction Run	Starting Method	Across The Line
Poles	4	Rotation	Reversible
Resistance Main	3 Ohms	Mounting	Rigid Base
Motor Orientation	Horizontal	Drive End Bearing	Ball
Opp Drive End Bearing	Ball	Frame Material	Rolled Steel
Shaft Type	T	Overall Length	17.71 in
Frame Length	11.00 in	Shaft Diameter	1.375 in
Shaft Extension	3.38 in	Assembly/Box Mounting	F1/F2 CAPABLE
Connection Drawing	005148.01	Outline Drawing	OL140445



			TOLERANCES UNLESS OTHERWISE SPECIFIED			LEESON ELECTRIC CORPORATION		
02	ADDED: WARNING DECAL - LIFTING LUG & WARNING DECAL -	KVN 4/19/2010	DEC.	INCHES	METRIC	DRAWN	PG 02/21/00	TITLE
	WITH/OUT PROTECTOR; REMOVED: DECAL - WIRING INSTRUCTION,		.X	±.1	±.25	APPR.		OUTLINE - 215T FRAME
	NAMEPLATE - was- TV SCREEN STYLE		.XX	±.03	±.76	R.F.P.		TEFC - RIGID MOUNT
01	REMOVED "LEESON" FROM CONDUIT BOX COVER	BPW 05/16/01	.XXX	±.005	±.127	SCALE	3=8	MAT'L.
	EFF. 07/31/01		.XXXX	±.0005	±.0127			NLV
NO.	REVISION	BY & DATE	CH'K'D.	FRACTIONS ±1/64		REF.	037511	FINISH
THIS DRAWING IN DESIGN AND DETAIL IS OUR PROPERTY AND MUST NOT BE USED EXCEPT IN CONNECTION WITH OUR WORK. ALL RIGHTS OF DESIGN AND INVENTION ARE RESERVED. THIS IS AN ELECTRONICALLY GENERATED DOCUMENT - DO NOT SCALE THIS PRINT.				ANGLES ±1/2'		FMF	140445	REV. 02
								DRAWING NO. OL140445

VIEW FROM OUTSIDE OF MOTOR AT SWITCH END.



SPEED	L1	L2	L3	JOIN	SEPARATE
HIGH	T6	T4	T5	(T1,T2,T3)	
LOW	T1	T2	T3		(T4),(T5), (T6)

		TOLERANCES UNLESS SPECIFIED	
		DEC.	INCHES
		.X	±.1
		.XX	±.01
03	SPEED WAS VOLTAGE	RLW 6/23/04	.XXX ±.005
02	REDRAWN TO CAD	DBT 5/30/97	.XXXX ±.0005
NO.	REVISION	BY & DATE	CHK ANG ±1/2°
			RFP 10/31/77



ELECTRIC MOTORS
GEARMOTORS
AND DRIVES

DRAWN	DLL 10/19/77
CHK	RPB 10/28/77
APPD	JCW 10/31/77
SCALE	1=1
REF	W-T8(4-8)1
FMF	184T17FB9
PREV	

TITLE	EXT. WIRING DIAGRAMS 3 PHASE W/O PROTECTOR
MAT'L.DECAL:	004183 2SPEED/1WINDING/CONSTANT TORQUE
FINISH	
CAD FILE	00514801
SIZE	A
DRAWING NO.	005148-01
REV.	03

Data Sheet

Date: 1/31/2018

140445.00



Data @ 460 V

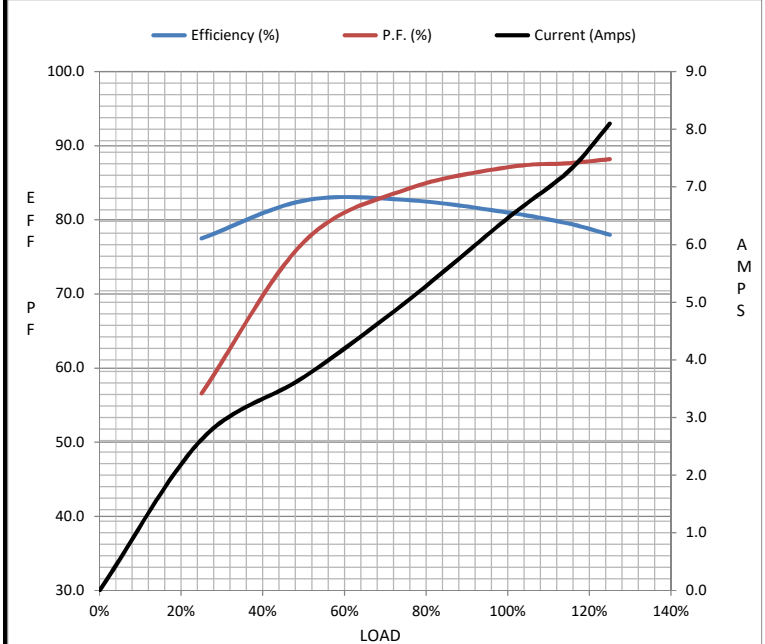
Motor Load Data

Load	0%	25%	50%	75%	100%	115%	125%	LR
Current (Amps)	0.00	2.62	3.7	5.0	6.5	7.3	8.1	41.5
Torque (ft-lb)	0.00	3.8	7.5	11.3	15.0	16.9	18.8	42.0
RPM	1800	1779	1757	1733	1705	1,691	1670	0
Efficiency (%)		77.5	82.6	82.7	81.0	79.5	78.0	
P.F. (%)	0.0	56.6	77.0	84.1	87.1	87.7	88.2	0.0

Motor Speed Data

	LR	Pull-Up	BD	Rated	Idle
Speed (RPM)	0	900	1656	1705	1800
Current (Amps)	41.5	38.2	24.9	6.5	0.00
Torque (ft-lb)	42.0	36.5	45.0	15.0	0.00

Information Block				
HP	5.0			
Sync. RPM	1800			
Frame	210			
Enclosure	TEFC			
Construction	NA			
Voltage	460 V			
Frequency	60 Hz			
Design	B			
LR Code letter	H			
Service Factor	1.15			
Temp Rise @ FL	0 °C			
Duty	CONT			
Ambient	40 °C			
Elevation	1,000 feet			
Rotor/Shaft wk ²	0.00 Lb-Ft ²			
Ref Wdg	T9(4-8)10 NONE			
Sound Pressure @ 1M	0 dBA			
VFD Rating	NONE			
Outline Dwg	OL140445			
Conn. Diag	005148.01			
Additional Specifications:				
0				
0				
EQUIV CKT (OHMS / PHASE)				
R1	R2	X1	X2	Xm
0.0000	0.0000	0.0000	0.0000	0.0000



Speed - Torque Curve

