

# PRODUCT INFORMATION PACKET

Model No: 140223.00

Catalog No: 140223.00

Agricultural Motor, 5 HP, 1 Ph, 60 Hz, 230 V, 1800 RPM, 215TZ Frame, TEFC



Regal and are trademarks of Regal Rexnord Corporation or one of its affiliated companies.  
©2022 Regal Rexnord Corporation, All Rights Reserved. MC017097E

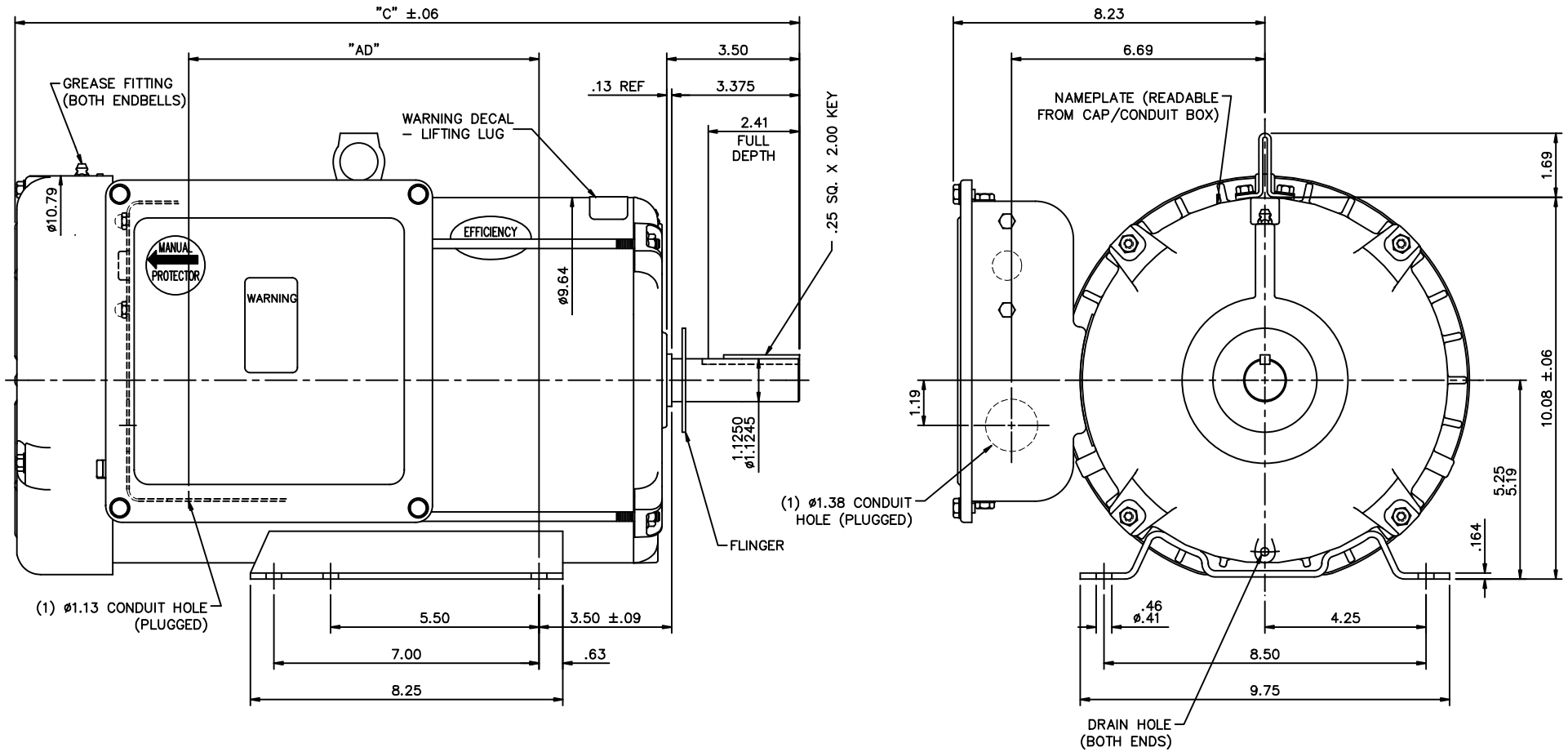
### Nameplate Specifications

Output HP	5 Hp	Output KW	3.7 kW
Frequency	60 Hz	Voltage	230 V
Current	24.0 A	Speed	1740 rpm
Service Factor	1.15	Phase	1
Efficiency	82.5 %	Power Factor	70
Duty	Continuous	Insulation Class	F
Design Code	NO DESIGN CODE	KVA Code	K
Frame	215TZ	Enclosure	Totally Enclosed Fan Cooled
Thermal Protection	Manual	Ambient Temperature	40 °C
Drive End Bearing Size	6207	Opp Drive End Bearing Size	6206
UL	Recognized	CSA	Y
CE	N	IP Code	43
Number of Speeds	1		

### Technical Specifications

Electrical Type	Capacitor Start Capacitor Run	Starting Method	Across The Line
Poles	4	Rotation	Selective Counterclockwise
Resistance Main	.221 Ohms	Mounting	Rigid Base
Motor Orientation	Horizontal	Drive End Bearing	Ball
Opp Drive End Bearing	Ball	Frame Material	Rolled Steel
Shaft Type	Single Special Extension	Overall Length	18.71 in
Frame Length	12.00 in	Shaft Diameter	1.125 in
Shaft Extension	3.37 in	Assembly/Box Mounting	F1 ONLY
Outline Drawing	037600-1200	Connection Drawing	005080.17

This is an uncontrolled document once printed or downloaded and is subject to change without notice. Date Created:09/07/2022

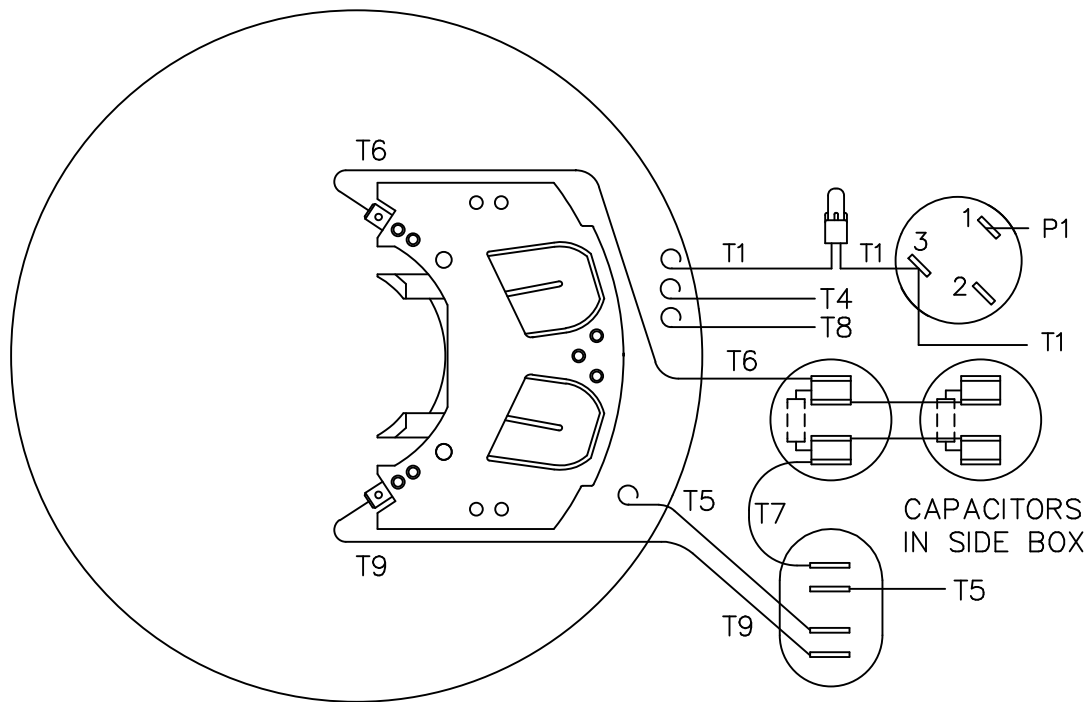


**SPECIAL FEATURES:**

- BRASS NAMEPLATE
- GASKETS THROUGHOUT
- FLINGER ON SHAFT
- DRAIN HOLES IN BOTH ENDBELLS
- MANUAL OVERLOAD PROTECTOR
- GREASE FITTINGS IN BOTH ENDBELLS

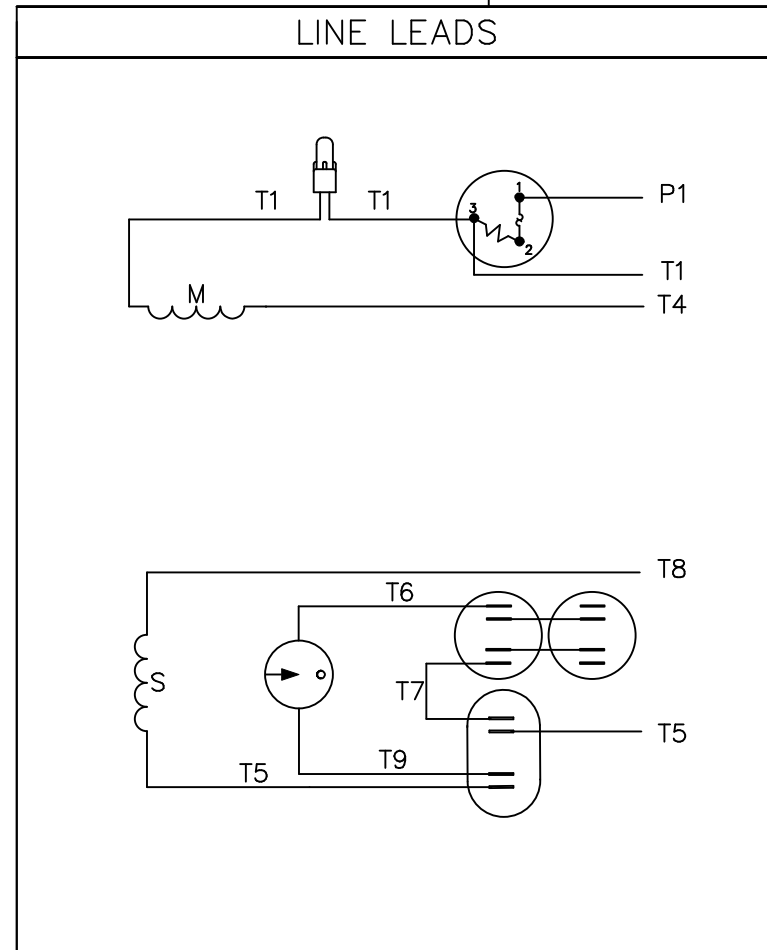
DASH NO.	"C"	"AD"
1200	18.71	7.25
1250	19.21	7.75
1300	19.71	8.25
1350	20.21	8.75
1400	20.71	9.25
1450	21.21	9.75
1500	21.71	10.25

		TOLERANCES UNLESS SPECIFIED		LEESON ELECTRIC MOTORS GEARMOTORS AND DRIVES		DRAWN RDW 10/18/02	
		DEC.	INCHES			CHK	
02	ADDED: WARNING DECAL-LIFTING LUG & WARNING DECAL -	KVN	4/19/2010	.X	±.1	APPD SW 10/18/02	
	MANUAL PROTECTOR; REMOVED: DECAL - WIRING INSTRUCTION			.XX	±.03	TITLE OUTLINE - 210TZ FRAME	
01	REV'D KEY TO MATCH BOM, WAS .31 SQ. X 2.38	BJB	12/18/02	.XXX	±.005	SCALE 3=8	
				.XXXX	±.0005	REF 140209	
NO.	REVISION	BY & DATE	CHK	ANG	±1/2"	MAT'L FARM DUTY	
THIS DRAWING IN DESIGN AND DETAIL IS OUR PROPERTY AND MUST NOT BE USED EXCEPT IN CONNECTION WITH OUR WORK ALL RIGHTS OF DESIGN AND INVENTION ARE RESERVED THIS IS AN ELECTRONICALLY GENERATED DOCUMENT - DO NOT SCALE THIS PRINT				RFP	10/18/02	CAD FILE	037600
				DIST	NLV	SIZE	DRAWING NO.
						B	037600
							REV. 02



VIEW FROM OUTSIDE OF MOTOR AT SWITCH END

CAUTION:  
LEAD WIRE INSULATION TO EXTEND MIN. OF 1/4" INTO CONNECTOR INSULATION



ROTATION FACING LEAD END	L1	L2	JOIN & INSULATE
C.C.W.	P1	T4,T5	T1,T8
C.W.	P1	T4,T8	T1,T5

NO.	REVISION	BY & DATE	CHK	TOLERANCES UNLESS SPECIFIED	
				DEC.	INCHES
				.X	±.1
				.XX	±.01
				.XXX	±.005
				.XXXX	±.0005
				ANG	±1/2°



ELECTRIC MOTORS  
GEARMOTORS  
AND DRIVES

TITLE	EXTERNAL WIRING DIAGRAM TYPE "K" WITH PROTECTOR
MAT'L.	DECAL 004015
FINISH	

DRAWN	RDW 9/17/02
CHK	
APPD	
SCALE	1=2
REF	005080-16
FMF	140203
PREV	

THIS DRAWING IN DESIGN AND DETAIL IS OUR PROPERTY AND MUST NOT BE USED EXCEPT IN CONNECTION WITH OUR WORK ALL RIGHTS OF DESIGN AND INVENTION ARE RESERVED THIS IS AN ELECTRONICALLY GENERATED DOCUMENT - DO NOT SCALE THIS PRINT		RFP	9/17/02	CAD FILE	00508017	SIZE	DRAWING NO.	REV.
		DIST				A	005080-17	



1051 CHEYENNE AVE.  
GRAFTON, WI 53024  
PH. 262-377-8810

**CERTIFICATION DATA SHEET**

**CONN. DIAGRAM:** 005080.17  
**OUTLINE:** 037600-1200  
**WINDING #:** K9419 FR 2 A

**CATALOG #:** 140223.00  
**MOUNTING:** F1 ONLY

**TYPICAL MOTOR PERFORMANCE DATA**

HP	kW	SYNC. RPM	F.L. RPM	FRAME	ENCLOSURE	KVA CODE	DESIGN
5	3.70	1800	1740	215TZ	TEFC	K	NO DESIGN CODE

PH	Hz	VOLTS	AMPS	START TYPE	DUTY	INSL	S.F.	AMB°C
1	60	230	24	ACROSS THE LINE	CONTINUOUS	F4	1.15	40

FULL LOAD EFF:	82.5	3/4 LOAD EFF:	79.8	1/2 LOAD EFF:	74.2	GTD. EFF		ELEC. TYPE	
FULL LOAD PF:	70	3/4 LOAD PF:	78.4	1/2 LOAD PF:	69.1	80		CAP START CAP RUN	

F.L. TORQUE	LOCKED ROTOR AMPS	L.R. TORQUE	B.D. TORQUE	F.L. RISE°C
15 LB-FT	185	60 LB-FT 400 %	43.5 LB-FT 290 %	69

SOUND PRESSURE @ 3 FT.	SOUND POWER	ROTOR WK^2	MAX. WK^2	SAFE STALL TIME	STARTS / HOUR	APPROX. MOTOR WGT
0 dBA	10 dBA	0.801 LB-FT^2	0.8 LB-FT^2	0 SEC.	0	153 LBS.

**\*\*\* SUPPLEMENTAL INFORMATION \*\*\***

DE BRACKET TYPE	ODE BRACKET TYPE	MOUNT TYPE	ORIENTATION	SEVERE DUTY	HAZARDOUS LOCATION	DRIP COVER	SCREENS	PAINT
STANDARD	STANDARD	RIGID	HORIZONTAL	FALSE	NONE	FALSE	NONE	RED - LEESON FARM DUTY

BEARINGS		GREASE	SHAFT TYPE	SPECIAL DE	SPECIAL ODE	SHAFT MATERIAL	FRAME MATERIAL
DE	ODE						
BALL	BALL	POLYREX EM	SGL SPL EXT	1.125 x 3.75 IN SEK	NONE	AISI 1045 (C-240)	ROLLED STEEL
6207	6206						

THERMO-PROTECTORS				THERMISTORS	CONTROL	SPACE HEATERS
THERMOSTATS	PROTECTORS	WDG RTDs	BRG RTDs			
NONE	MANUAL	NONE	NONE	NONE	FALSE	NONE VOLTS

\*  
N  
O  
T  
E  
S  
\*

<b>INVERTER TORQUE:</b> NONE
<b>INV. HP SPEED RANGE:</b> NONE
<b>ENCODER:</b> NONE NONE NONE NONE NONE PPR
<b>BRAKE:</b> NONE NONE NONE P/N NONE NONE NONE NONE FT-LB NONE V NONE Hz

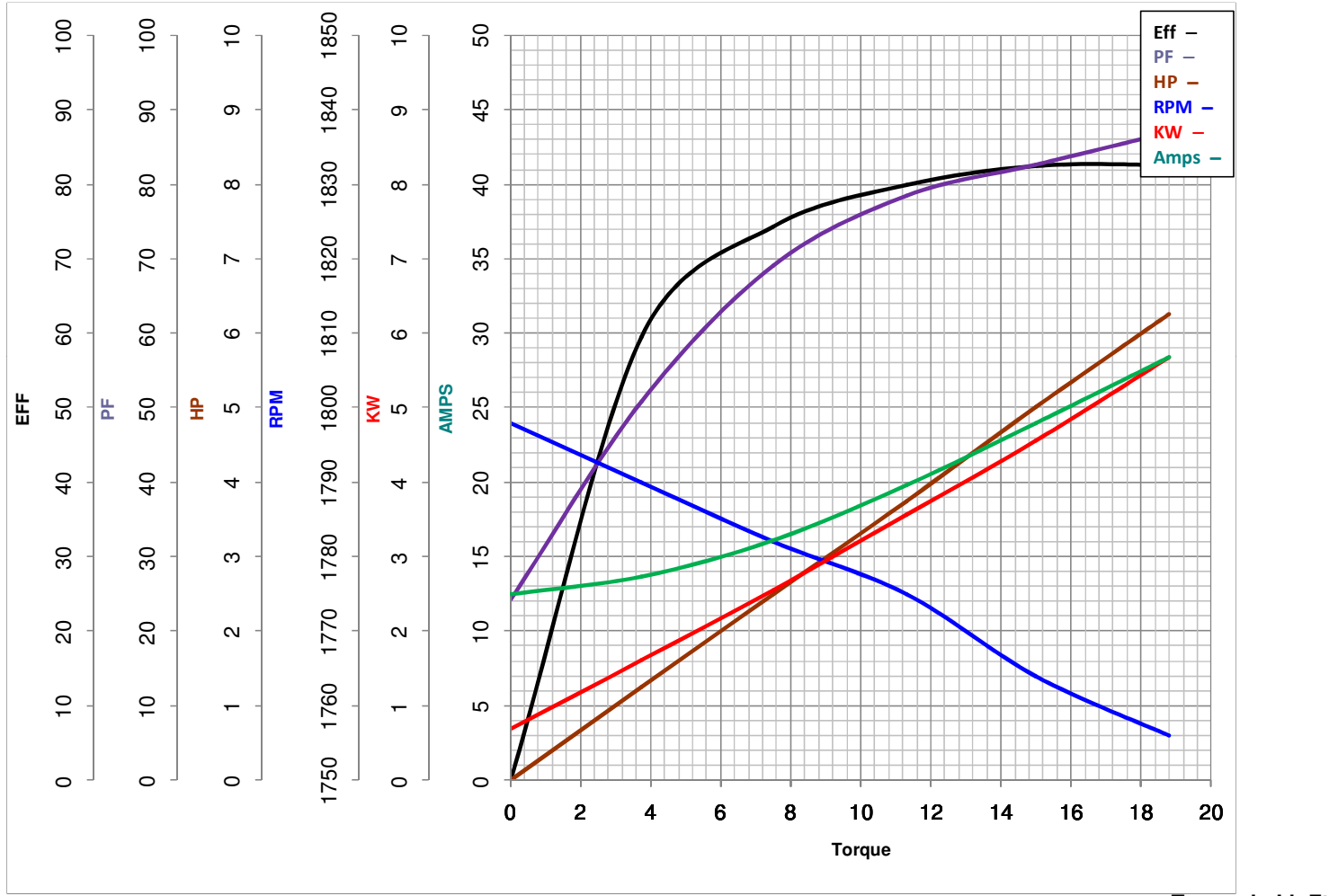


**LEESON ELECTRIC CORPORATION**  
TYPICAL PERFORMANCE CURVE for AC MOTOR

Model No 140223.00

Catalog No 140223.00

Curve at 230 Volts      HP 5.00      PHASE 1  
60 HZ  
5 HP      VOLTS 230  
HZ 60      RPM 1740



FL TORQUE	<u>15</u>	Lb.Ft	FL AMPS	<u>24</u>	
BD TORQUE	<u>43.5</u>	Lb.Ft	PU TORQUE	<u>38.0</u>	Lb.Ft
LR TORQUE	<u>60</u>	Lb.Ft	LR AMPS	<u>185</u>	
WINDING	K9419-2		Date	<u>3/27/2018</u>	