

# PRODUCT INFORMATION PACKET



Model No: P215K17FB2L

Catalog No: 140130.00

..7 1/2HP..1740RPM.215.TEFC./230V.1PH.60HZ.CONT.40C.1.15SF.RIGID.P215K17FB2L.....AG - FARM  
DUTY/GENERAL PURPOSE.MANUAL.....

Agricultural



Regal and Leeson are trademarks of Regal Beloit Corporation or one of its affiliated companies.

©2018 Regal Beloit Corporation, All Rights Reserved. MC017097E



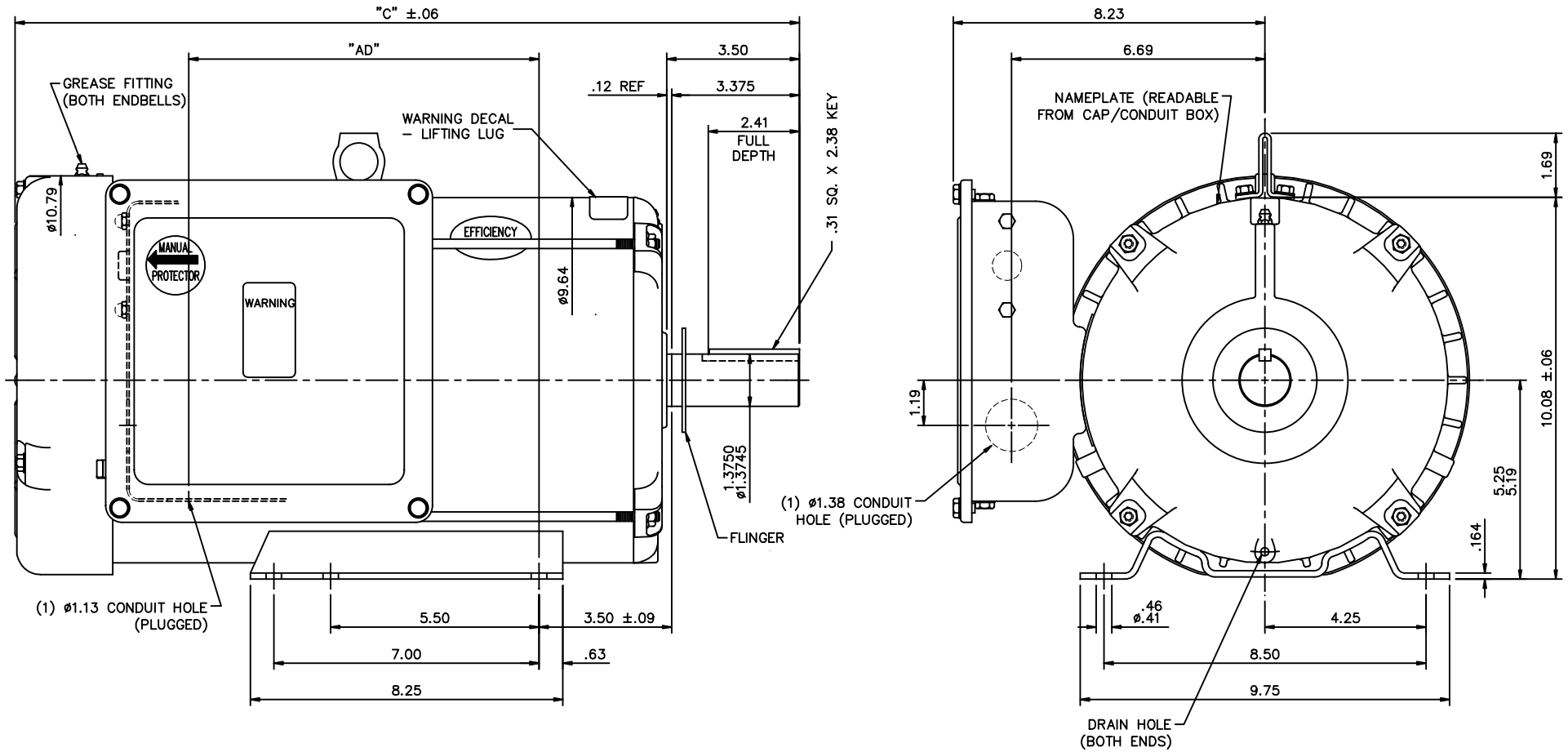


**Nameplate Specifications**

Output HP	<b>7.5 Hp</b>	Output KW	<b>5.6 kW</b>
Frequency	<b>60 Hz</b>	Voltage	<b>230 V</b>
Current	<b>33.6 A</b>	Speed	<b>1740 rpm</b>
Service Factor	<b>1.15</b>	Phase	<b>1</b>
Efficiency	<b>82.5 %</b>	Duty	<b>CONTINUOUS</b>
Insulation Class	<b>F</b>	Design Code	<b>NO DESIGN CODE</b>
KVA Code	<b>H</b>	Frame	<b>215T</b>
Enclosure	<b>TEFC</b>	Overload Protector	<b>MANUAL</b>
Ambient Temperature	<b>40 °C</b>	Drive End Bearing Size	<b>6207</b>
Opp Drive End Bearing Size	<b>6206</b>	UL	<b>Recognized</b>
CSA	<b>Y</b>	CE	<b>N</b>
IP Code	<b>43</b>		

**Technical Specifications**


Electrical Type	<b>CAP START CAP RUN</b>	Starting Method	<b>ACROSS THE LINE</b>
Poles	<b>4</b>	Rotation	<b>SELECTIVE CCW</b>
Mounting	<b>RIGID</b>	Motor Orientation	<b>HORIZONTAL</b>
Drive End Bearing	<b>BALL</b>	Opp Drive End Bearing	<b>BALL</b>
Frame Material	<b>ROLLED STEEL</b>	Shaft Type	<b>T</b>
Overall Length	<b>20.21 in</b>	Frame Length	<b>13.5 in</b>
Shaft Diameter	<b>1.38 in</b>	Shaft Extension	<b>3.38 in</b>
Assembly/Box Mounting	<b>F1 ONLY</b>		
Outline Drawing	<b>037596-1350</b>	Connection Diagram	<b>5080.17</b>

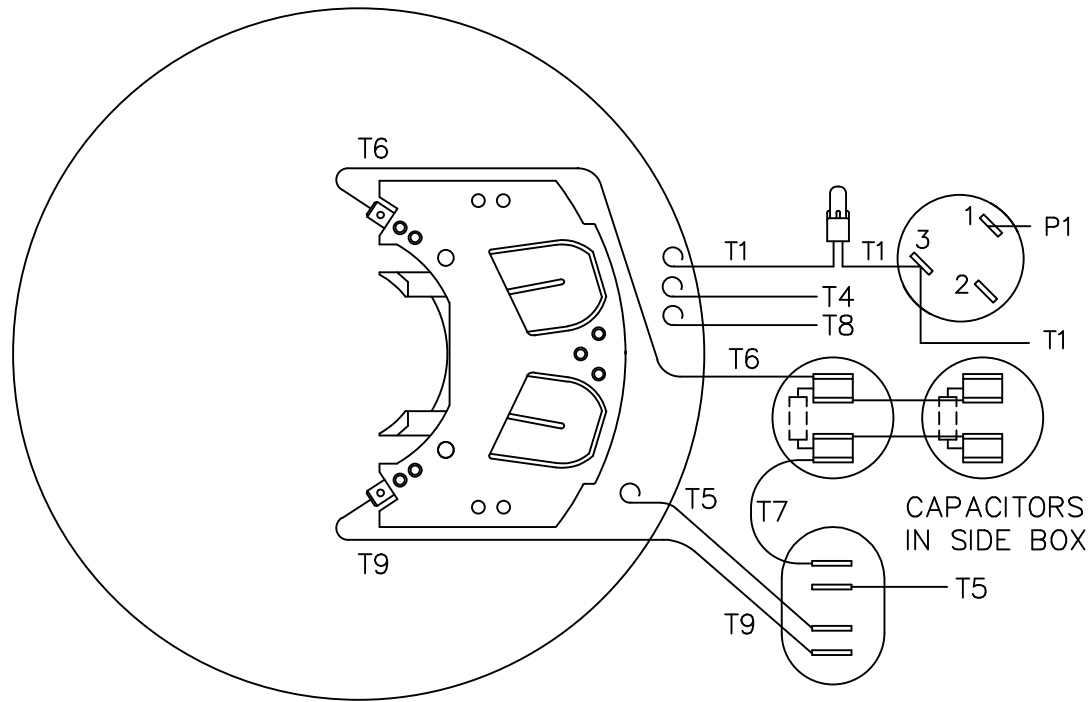


**SPECIAL FEATURES:**

- BRASS NAMEPLATE
- GASKETS THROUGHOUT
- FLINGER ON SHAFT
- DRAIN HOLES IN BOTH ENDBELLS
- MANUAL OVERLOAD PROTECTOR
- GREASE FITTINGS IN BOTH ENDBELLS

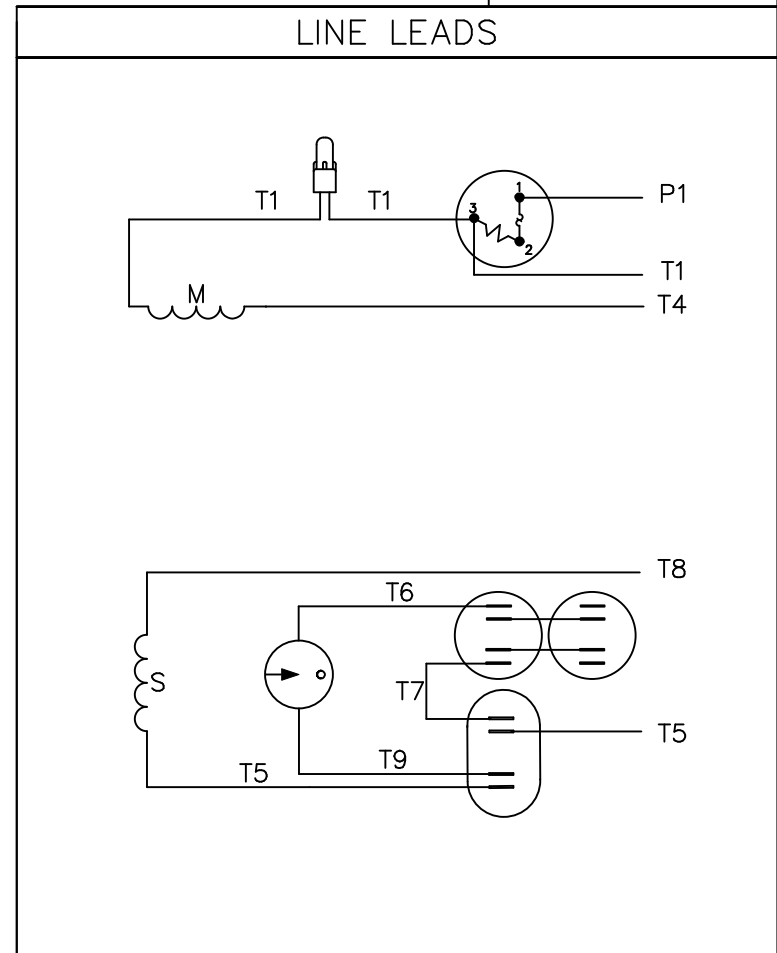
DASH NO.	"C"	"AD"
1200	18.71	7.25
1250	19.21	7.75
1300	19.71	8.25
1350	20.21	8.75
1400	20.71	9.25
1450	21.21	9.75
1500	21.71	10.25

		TOLERANCES UNLESS SPECIFIED		 ELECTRIC MOTORS GEARMOTORS AND DRIVES	DRAWN	RDW 6/3/02				
		DEC.	INCHES		CHK	APPD	SW 6/3/02			
		.X	±.1	TITLE OUTLINE - 210T FRAME TEFC - RIGID	SCALE 3=8	REF 140130				
01	ADDED: WARNING DECAL-LIFTING LUG & WARNING DECAL -	KVN	4/6/2010				MAT'L FARM DUTY	FMF	PREV	
	MANUAL PROTECTOR; REMOVED: DECAL - WIRING INSTRUCTION									
NO.	REVISION	BY & DATE	CHK	ANG	±1/2"	FINISH				
THIS DRAWING IN DESIGN AND DETAIL IS OUR PROPERTY AND MUST NOT BE USED EXCEPT IN CONNECTION WITH OUR WORK ALL RIGHTS OF DESIGN AND INVENTION ARE RESERVED THIS IS AN ELECTRONICALLY GENERATED DOCUMENT - DO NOT SCALE THIS PRINT				RFP	6/3/02	CAD FILE	037596	SIZE	DRAWING NO.	REV.
				DIST	NLV	B	037596		01	



VIEW FROM OUTSIDE OF MOTOR AT SWITCH END

CAUTION:  
LEAD WIRE INSULATION TO EXTEND MIN. OF 1/4" INTO CONNECTOR INSULATION



ROTATION FACING LEAD END	L1	L2	JOIN & INSULATE
C.C.W.	P1	T4,T5	T1,T8
C.W.	P1	T4,T8	T1,T5

NO.	REVISION	BY & DATE	CHK	TOLERANCES UNLESS SPECIFIED	
				DEC.	INCHES
				.X	±.1
				.XX	±.01
				.XXX	±.005
				.XXXX	±.0005
				ANG	±1/2°



ELECTRIC MOTORS  
GEARMOTORS  
AND DRIVES

TITLE	EXTERNAL WIRING DIAGRAM TYPE "K" WITH PROTECTOR
MAT'L.	DECAL 004015
FINISH	

DRAWN	RDW 9/17/02
CHK	
APPD	
SCALE	1=2
REF	005080-16
FMF	140203
PREV	

THIS DRAWING IN DESIGN AND DETAIL IS OUR PROPERTY AND MUST NOT BE USED EXCEPT IN CONNECTION WITH OUR WORK ALL RIGHTS OF DESIGN AND INVENTION ARE RESERVED THIS IS AN ELECTRONICALLY GENERATED DOCUMENT - DO NOT SCALE THIS PRINT		RFP	9/17/02	CAD FILE	00508017	SIZE	DRAWING NO.	REV.
		DIST				A	005080-17	