

PRODUCT INFORMATION PACKET

marathon®
Motors

Model No: 132STFC4586

Catalog No: R353

Cast Iron Motor, 4 & 4 HP, 3 Ph, 60 & 50 Hz, 230/460 & 200/400 V, 1200 & 1000 RPM, 132S Frame, TEFC



Regal and Marathon are trademarks of Regal Rexnord Corporation or one of its affiliated companies.

©2023 Regal Rexnord Corporation, All Rights Reserved. MC017097E

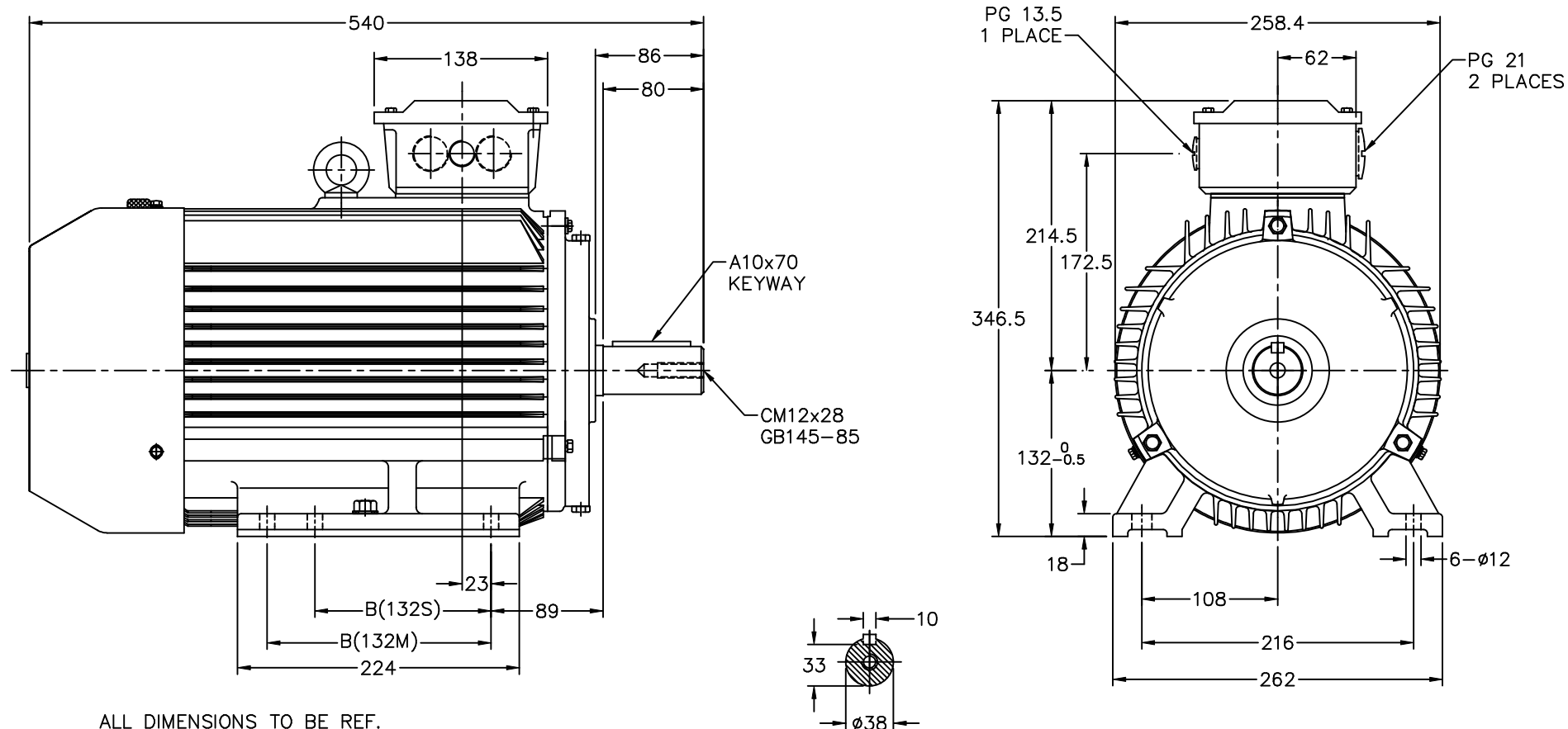
RegalRexnord

Nameplate Specifications

| | | | |
|------------------------|----------------|----------------------------|-----------------------------|
| Phase | 3 | Output HP | 4 & 4 Hp |
| Output KW | 3.0 & 3.0 kW | Voltage | 230/460 & 200/400 V |
| Speed | 1185 & 980 rpm | Service Factor | 1.15 & 1.15 |
| Frame | 132S | Enclosure | Totally Enclosed Fan Cooled |
| Thermal Protection | No Protection | Efficiency | 87.5 & 86.5 % |
| Ambient Temperature | 40 °C | Frequency | 60 & 50 Hz |
| Current | 12/6 & 14/7 A | Power Factor | 70.9 |
| Duty | Continuous | Insulation Class | F |
| Design Code | B | KVA Code | K |
| Drive End Bearing Size | 6308 | Opp Drive End Bearing Size | 6308 |
| UL | Recognized | CSA | Y |
| CE | Y | IP Code | 55 |
| Number of Speeds | 1 | | |

Technical Specifications

| | | | |
|-----------------------|------------------------------|-------------------|------------------|
| Electrical Type | Squirrel Cage Inverter Rated | Starting Method | Line Or Inverter |
| Poles | 6 | Rotation | Reversible |
| Resistance Main | 2.02 Ohms | Mounting | Rigid Base |
| Motor Orientation | Horizontal Or Shaft Down | Drive End Bearing | Ball |
| Opp Drive End Bearing | Ball | Frame Material | Cast Iron |
| Shaft Type | IEC | Overall Length | 21.25 in |
| Shaft Diameter | 1.500 in | Shaft Extension | 3.15 in |
| Assembly/Box Mounting | F3 | | |
| Connection Drawing | 132STFC4586 | Outline Drawing | B-SS620005-132S |



| FRAME | B | |
|-------|-----|--|
| 132S | 140 | |
| 132M | 178 | |

| | | | | TOLERANCES UNLESS SPECIFIED | | MARATHON ELECTRIC | DRAWN CTO 09-23-2004 | | | |
|--|-------------------------------------|----------------|-----|-----------------------------|--------|--------------------------------|----------------------|-------|-------------|------------|
| | | | | DEC. | METRIC | | CHK | ML | 09-24-2004 | |
| | | | | .XX | ±.76 | TITLE OUTLINE - IEC 132 FR. | | APPD | SB | 09-24-2004 |
| | | | | .XXX | ±.127 | | | SCALE | 5=16 | |
| 1 | ADDED DASH 132M FR. SIZE & REISSUED | CTO 10-08-2004 | SB | .XXXX | ±.0127 | MAT'L | | REF | | |
| NO. | REVISION | BY & DATE | CHK | ANG | ±7'30" | FINISH | | PREV | | |
| THIS DRAWING IN DESIGN AND DETAIL IS OUR PROPERTY AND MUST NOT BE USED EXCEPT IN CONNECTION WITH OUR WORK ALL RIGHTS OF DESIGN AND INVENTION ARE RESERVED THIS IS AN ELECTRONICALLY GENERATED DOCUMENT - DO NOT SCALE THIS PRINT | | | | | | RFP | CAD FILE ss620005 | SIZE | DRAWING NO. | PAGE OF |
| | | | | | | DIST | WA | B | SS620005 | 1 |