

PRODUCT INFORMATION PACKET

Model No: 132616.00

Catalog No: 132616.00

132616.00..3HP..1765RPM.182TC.TEFC.230/460VAC.3PH.60HZ.CONT.40C.1.0SF.C-FACE.....

Regal and are trademarks of Regal Rexnord Corporation or one of its affiliated companies.
©2022 Regal Rexnord Corporation, All Rights Reserved. MC017097E



Nameplate Specifications

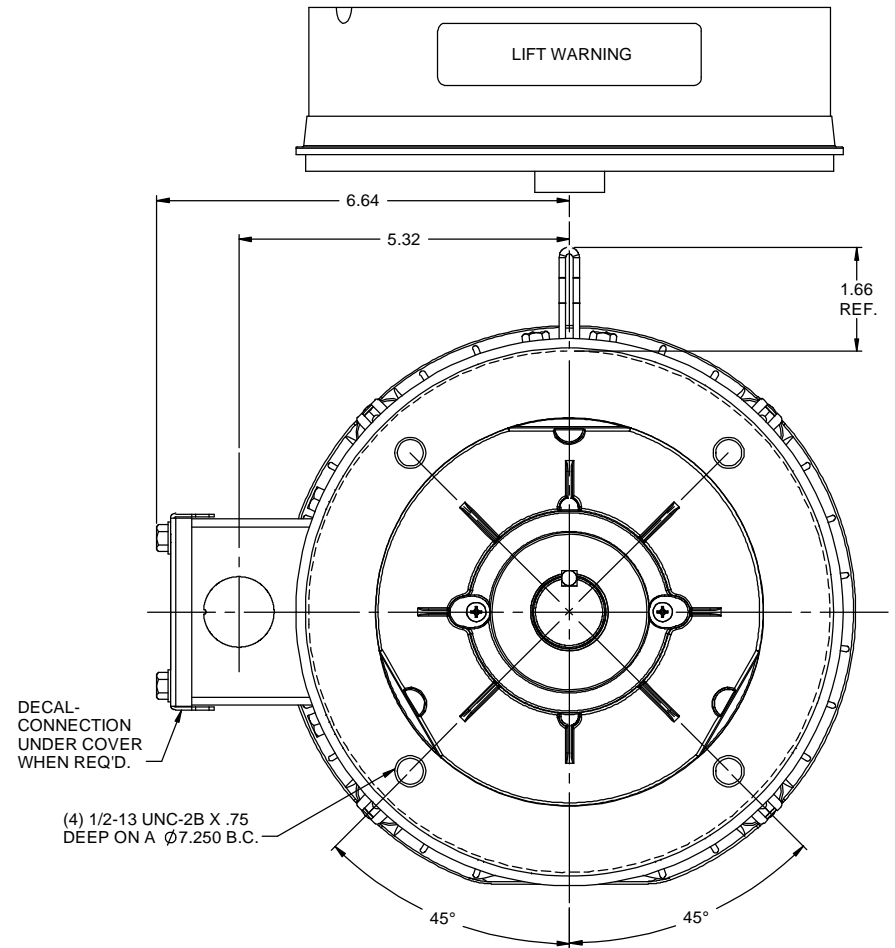
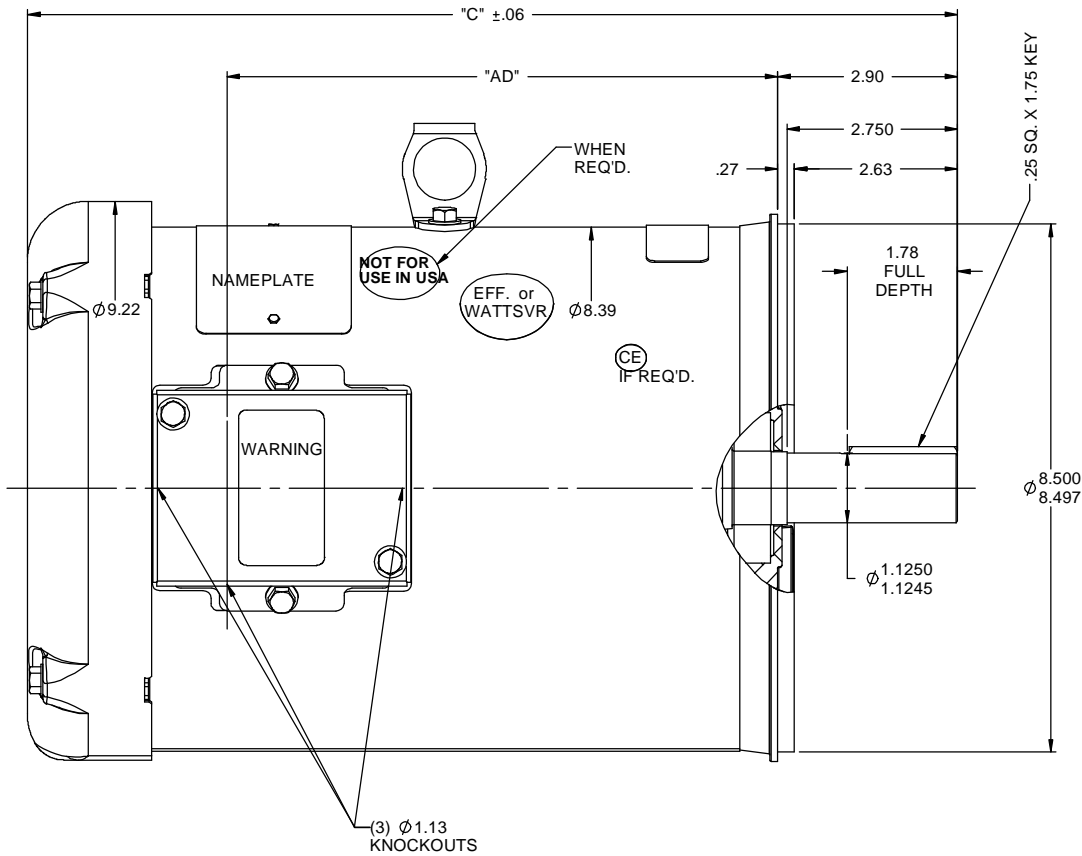
Output HP	3 Hp	Output KW	2.2 kW
Frequency	60 Hz	Voltage	230/460 V
Current	8.4/4.2 A	Speed	1765 rpm
Service Factor	1	Phase	3
Efficiency	87.5 %	Power Factor	76.4
Duty	Continuous	Insulation Class	F
Design Code	A	KVA Code	K
Frame	184TC	Enclosure	Totally Enclosed Fan Cooled
Thermal Protection	No Protection	Ambient Temperature	40 °C
Drive End Bearing Size	6206	Opp Drive End Bearing Size	6205
UL	Recognized	CSA	Y
CE	N	IP Code	43
Number of Speeds	1		

Technical Specifications

Electrical Type	Squirrel Cage Inverter Duty	Starting Method	Inverter Only
Poles	4	Rotation	Reversible
Resistance Main	0 Ohms	Mounting	Rigid Base
Motor Orientation	Horizontal	Drive End Bearing	Ball
Opp Drive End Bearing	Ball	Frame Material	Rolled Steel
Shaft Type	T	Shaft Diameter	1.125 in
Assembly/Box Mounting	F1/F2 CAPABLE	Inverter Load	CONSTANT 10:1
Outline Drawing	035518-850	Connection Drawing	005010.01


This is an uncontrolled document once printed or downloaded and is subject to change without notice. Date Created:11/01/2022

RBC PROPRIETARY AND CONFIDENTIAL INFORMATION
This document is the property of REGAL BELOIT CORPORATION ("RBC") including its subsidiaries and divisions and contains proprietary information of RBC. This document is loaned on the express condition that neither it nor the information contained therein shall be disclosed to others without the express written consent of RBC, and that the information shall be used by the recipient only as approved expressly by RBC. This document shall be returned to RBC upon its request. This document may be subject to certain restrictions under U.S. export control laws and regulations.



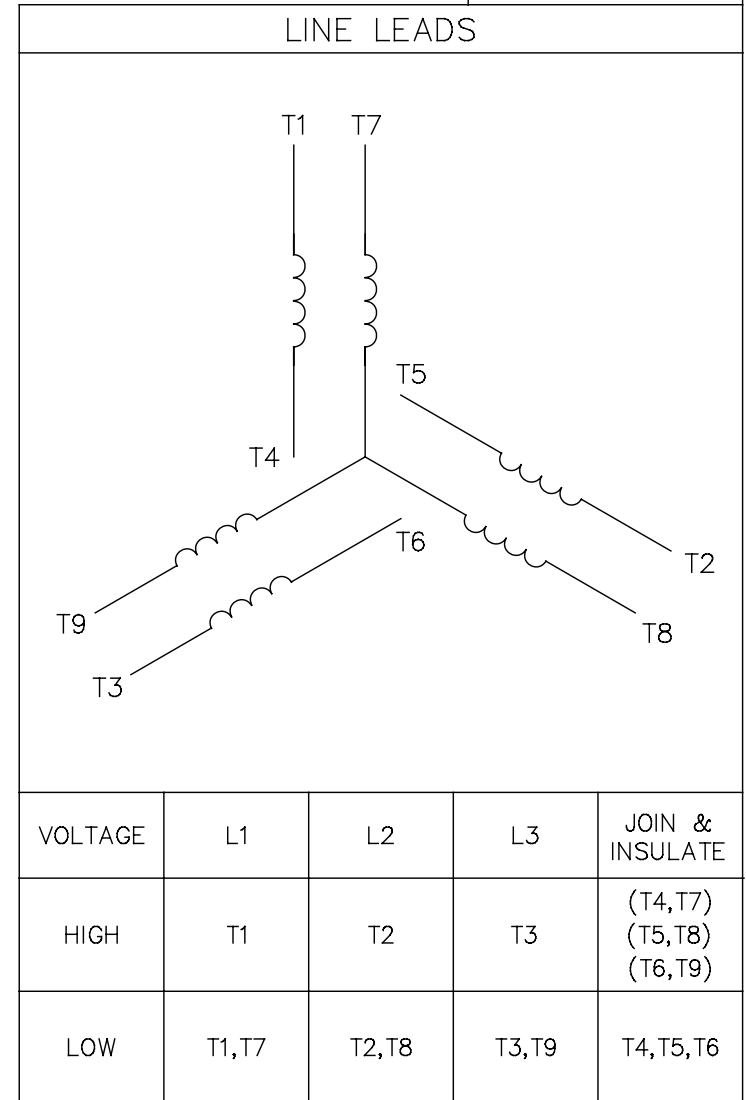
GASKETS THROUGHOUT
MAXIMUM FACE RUNOUT TO BE .004 T.I.R.
MAXIMUM PILOT ECCENTRICITY TO BE .004 T.I.R.
PERMISSIBLE SHAFT RUNOUT TO BE .002 T.I.R.


DASH NO.	"C"	"AD"
750	12.97	6.88
800	13.47	7.38
850	13.97	7.88
900	14.47	8.38
950	14.97	8.88
1000	15.47	9.38
1050	15.97	9.88
1100	16.47	10.38
1150	16.97	10.88

				TOLERANCES UNLESS SPECIFIED	 REGAL-BELOIT CORPORATION	DRAWN RDW 4/18/07	
				DEC INCHES		CHK	
				X ±.1	TITLE OUTLINE - 180TC FRAME TEFC - "C" FACE MATL GENERAL PURPOSE	APPR SW 4/18/07	
				XX ±.03		SCALE 1:2	
				XXX ±.005		REF 035452	
- UPDATED & REDRAWN IN SOLIDWORKS				XXXX ±.0005	FINISH	FMF	
NO	REVISION	BY & DATE	CHK	ANG ±1/2°		PAGE OF	
			THIRD ANGLE PROJECTION	RF	PREV	SIZE B	DRAWING NO 035518
				NETWORK FILE NAME			REV -

005010-01

VIEW FROM OUTSIDE OF MOTOR AT SWITCH END.



				TOLERANCES UNLESS SPECIFIED		 Regal Beloit America, Inc.			DRAWN RDW 04/12/02		
				DEC.	INCHES				CHK		
				.X	±.1				APPD		
				.XX	±.01				SCALE 1=1		
				.XXX	±.005	TITLE EXTERNAL WIRING DIAGRAM 3 PHASE W/O PROTECTOR			REF FIG.2-51		
A	UPDATED TO REGAL LOGO		SAJ 06/26/15	AJY .XXXX	±.0005				MAT'L. DECAL - 004014		
NO.	REVISION		BY & DATE	CHK	ANG	±1/2"	FINISH			PREV	
THIS DRAWING IN DESIGN AND DETAIL IS OUR PROPERTY AND MUST NOT BE USED EXCEPT IN CONNECTION WITH OUR WORK ALL RIGHTS OF DESIGN AND INVENTION ARE RESERVED THIS IS AN ELECTRONICALLY GENERATED DOCUMENT - DO NOT SCALE THIS PRINT				RFP 04/12/02		CAD FILE 00501001		SIZE A	DRAWING NO. 005010-01		REV. A
				DIST BRF-NLV							