

# PRODUCT INFORMATION PACKET



Model No: 132581.00

Catalog No: 132581.00

General Purpose Pump Motor, 7.50 HP, 1 Ph, 60 Hz, 208-230 V, 3600 RPM, 184TDZ Frame, DP

Regal and Leeson are trademarks of Regal Rexnord Corporation or one of its affiliated companies.

©2023 Regal Rexnord Corporation, All Rights Reserved. MC017097E





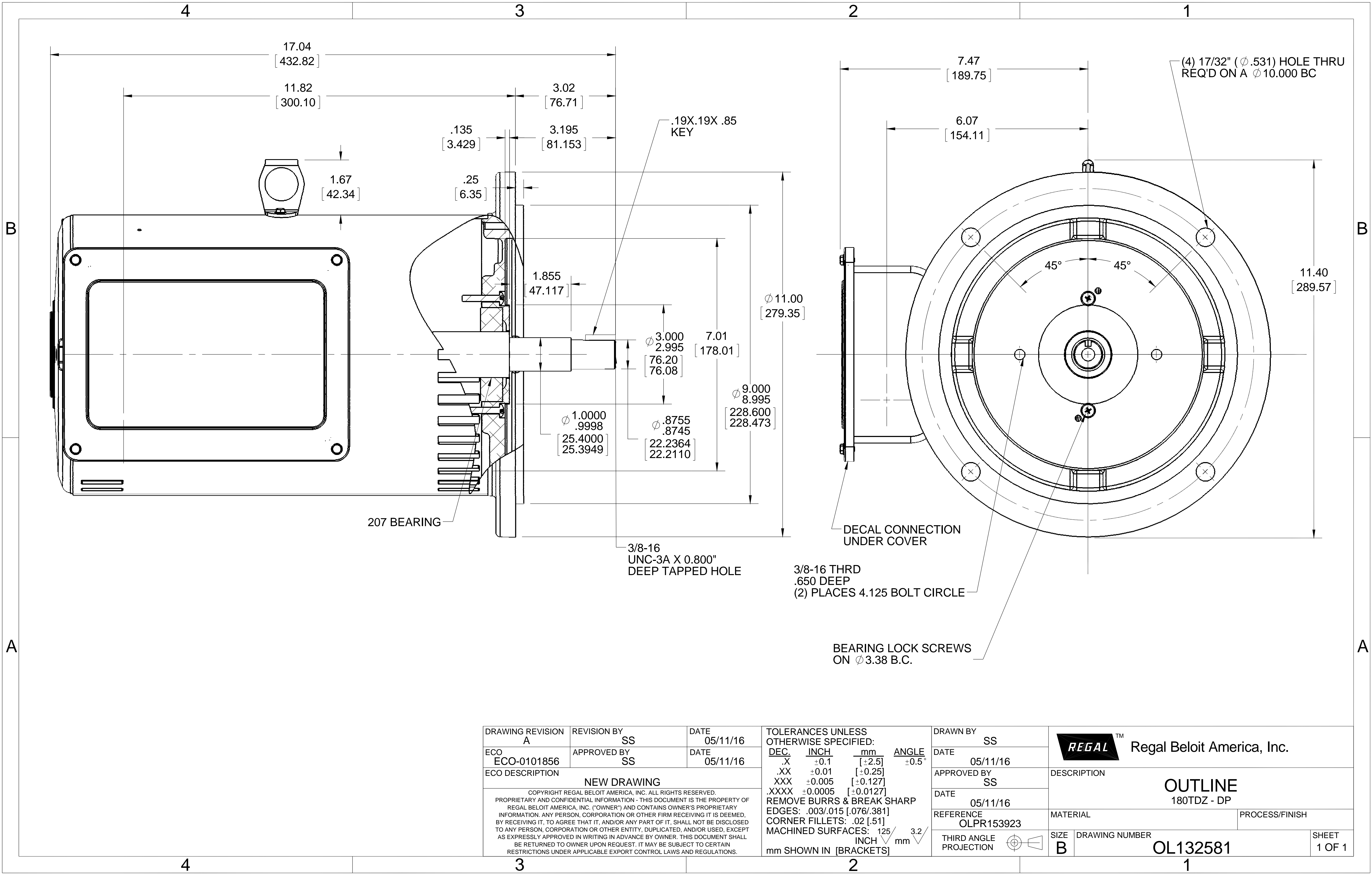
## Nameplate Specifications


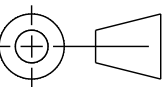
Output HP	7.50 Hp	Output KW	5.6 kW
Frequency	60 Hz	Voltage	208-230 V
Current	34.0-31.0 A	Speed	3515 rpm
Service Factor	1.15	Phase	1
Efficiency	82.5 %	Power Factor	93.5
Duty	Continuous	Insulation Class	F
Design Code	L	KVA Code	H
Frame	184TDZ	Enclosure	Drip Proof
Thermal Protection	Thermostat	Ambient Temperature	40 °C
Drive End Bearing Size	6207	Opp Drive End Bearing Size	6205
UL	Recognized	CSA	Y
CE	N	IP Code	22
Number of Speeds	1		

## Technical Specifications

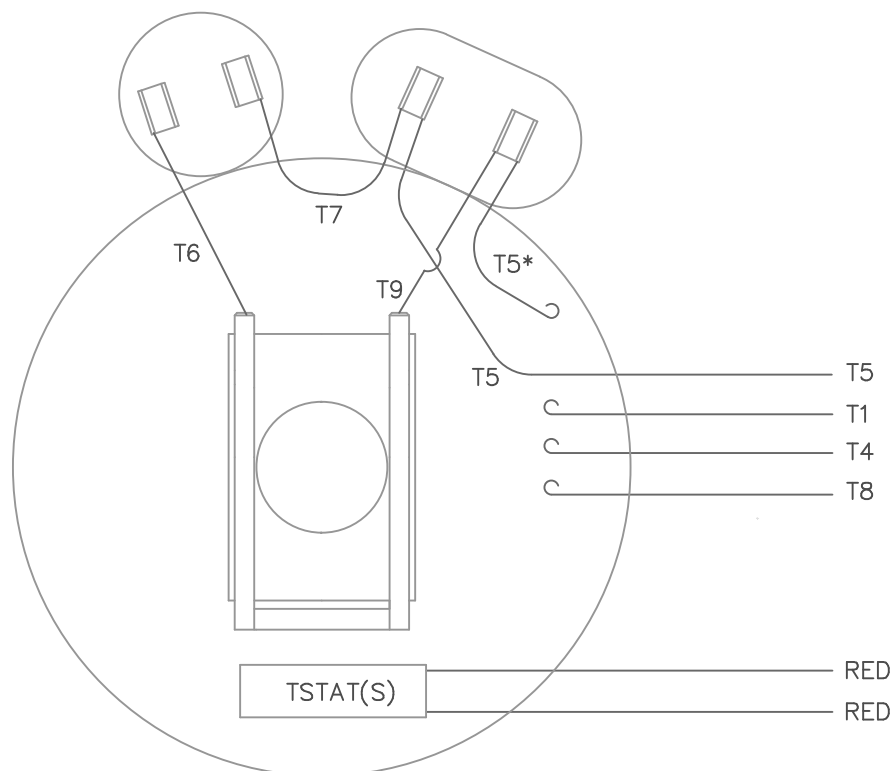
Electrical Type	Capacitor Start Capacitor Run	Starting Method	Across The Line
Poles	2	Rotation	Selective Counterclockwise
Resistance Main	.214 Ohms	Mounting	Round
Motor Orientation	Horizontal	Drive End Bearing	Ball
Opp Drive End Bearing	Ball	Frame Material	Rolled Steel
Shaft Type	Single Special Extension	Shaft Diameter	0.875 in
Assembly/Box Mounting	F1 ONLY		
Connection Drawing	005018.30	Outline Drawing	OL132581

This is an uncontrolled document once printed or downloaded and is subject to change without notice. Date Created:01/18/2023

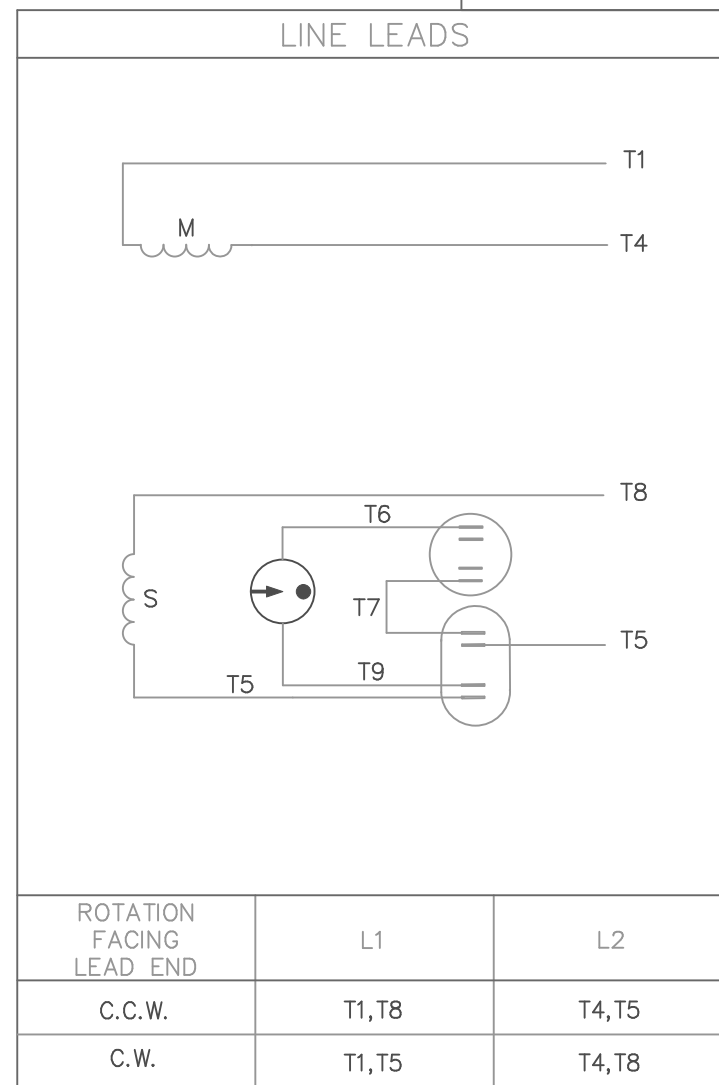


DRAWING REVISION A	REVISION BY SS	DATE 05/11/16	TOLERANCES UNLESS OTHERWISE SPECIFIED: DEC. INCH mm ANGLE .X $\pm$ 0.1 [±2.5] .XX $\pm$ 0.01 [±0.25] XXX $\pm$ 0.005 [±0.127] .XXXX $\pm$ 0.0005 [±0.0127] REMOVE BURRS & BREAK SHARP EDGES: .003/.015 [.076/.381] CORNER FILLETS: .02 [.51] MACHINED SURFACES: 125 INCH 3.2 mm mm SHOWN IN [BRACKETS]			DRAWN BY SS	 Regal Beloit America, Inc.		
ECO ECO-0101856	APPROVED BY SS	DATE 05/11/16				DATE 05/11/16			
ECO DESCRIPTION NEW DRAWING						APPROVED BY SS	DESCRIPTION OUTLINE		
COPYRIGHT REGAL BELOIT AMERICA, INC. ALL RIGHTS RESERVED. PROPRIETARY AND CONFIDENTIAL INFORMATION - THIS DOCUMENT IS THE PROPERTY OF REGAL BELOIT AMERICA, INC. ("OWNER") AND CONTAINS OWNER'S PROPRIETARY INFORMATION. ANY PERSON, CORPORATION OR OTHER FIRM RECEIVING IT IS DEEMED, BY RECEIVING IT, TO AGREE THAT IT, AND/OR ANY PART OF IT, SHALL NOT BE DISCLOSED TO ANY PERSON, CORPORATION OR OTHER ENTITY, DUPLICATED, AND/OR USED, EXCEPT AS EXPRESSLY APPROVED IN WRITING IN ADVANCE BY OWNER. THIS DOCUMENT SHALL BE RETURNED TO OWNER UPON REQUEST. IT MAY BE SUBJECT TO CERTAIN RESTRICTIONS UNDER APPLICABLE EXPORT CONTROL LAWS AND REGULATIONS.						DATE 05/11/16	180TDZ - DP		
						REFERENCE OLPR153923	MATERIAL		PROCESS/FINISH
						THIRD ANGLE PROJECTION 	SIZE B	DRAWING NUMBER OL132581	SHEET 1 OF 1

VIEW FROM OUTSIDE OF MOTOR AT SWITCH END.



\* THIS LEAD MAY BE WHITE



				TOLERANCES UNLESS OTHERWISE SPECIFIED		LEESON ELECTRIC CORPORATION				
				DECIMALS						
				.00	± .01	DRAWN MDN 10/13/98	TITLE EXTERNAL WIRING DIAGRAM TYPE "K" W/O PROTECTOR			
				.000	± .005	CH'K'D.				
01	ADDED "THIS LEAD MAY BE WHITE" NOTE	BJB	09/15/04	.0000	± .0005	APPR.	MAT'L DECAL – 004018 TSTAT – 080582			
NO.	REVISION	BY	DATE	FRACTIONS	± 1/64	SCALE 1=1				
THIS DRAWING IN DESIGN AND DETAIL IS OUR PROPERTY AND MUST NOT BE USED EXCEPT IN CONNECTION WITH OUR WORK ALL RIGHTS OF DESIGN AND INVENTION ARE RESERVED				ANGLES	± 1/2"	REF.	FINISH		SIZE A	DRAWING NO. 005018–30
				INCH/MM		FMF				

BRF