

PRODUCT INFORMATION PACKET



Model No: 132551.00

Catalog No: 132551.00

Hydraulic Motor, 3 & 2 HP, 3 Ph, 60 & 50 Hz, 208-230/460 & 190/380 V, 1800 & 1500 RPM,
182TYZ Frame, TEFC



Regal and Leeson are trademarks of Regal Rexnord Corporation or one of its affiliated companies.

©2023 Regal Rexnord Corporation, All Rights Reserved. MC017097E





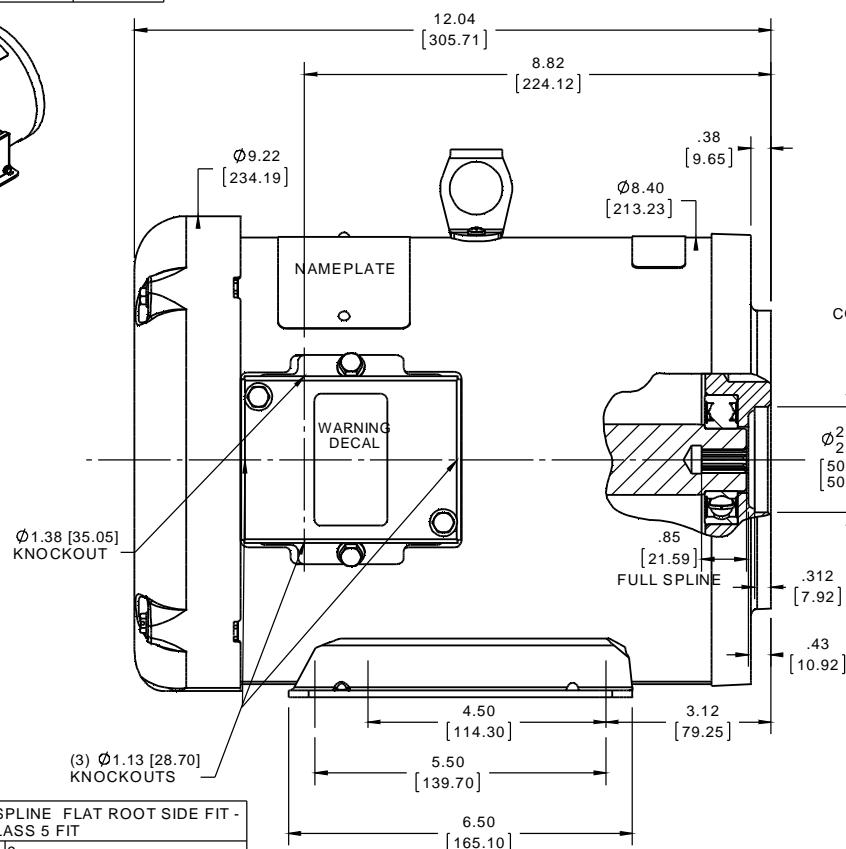
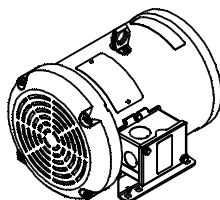
Nameplate Specifications

| | | | |
|------------------------|--------------------------|----------------------------|-----------------------------|
| Phase | 3 | Output HP | 3 & 2 Hp |
| Output KW | 2.2 & 1.5 kW | Voltage | 208-230/460 & 190/380 V |
| Speed | 1770 & 1475 rpm | Service Factor | 1.15 & 1.15 |
| Frame | 182TYZ | Enclosure | Totally Enclosed Fan Cooled |
| Thermal Protection | No Protection | Efficiency | 89.5 & 88.5 % |
| Ambient Temperature | 40 °C | Frequency | 60 & 50 Hz |
| Current | 8.4-7.8/3.9 & 9.5/4.75 A | Power Factor | 80.5 |
| Duty | Continuous | Insulation Class | F |
| Design Code | B | KVA Code | K |
| Drive End Bearing Size | 6206 | Opp Drive End Bearing Size | 6205 |
| UL | Recognized | CSA | Y |
| CE | Y | IP Code | 43 |
| Number of Speeds | 1 | | |

Technical Specifications

| | | | |
|-----------------------|------------------------------|--------------------|------------------|
| Electrical Type | Squirrel Cage Inverter Rated | Starting Method | Line Or Inverter |
| Poles | 4 | Rotation | Reversible |
| Resistance Main | 6.08 Ohms | Mounting | Rigid Base |
| Motor Orientation | Horizontal | Drive End Bearing | Ball |
| Opp Drive End Bearing | Ball | Frame Material | Rolled Steel |
| Shaft Type | Single Special Extension | Overall Length | 12.04 in |
| Frame Length | 9.00 in | Shaft Extension | SPLINE SHAFT in |
| Assembly/Box Mounting | F1/F2 CAPABLE | Inverter Load | CONSTANT 10:1 |
| Outline Drawing | 608-0005-900 | Connection Drawing | 005010.01 |

| PART NUMBER | ORACLE PART REV. | EDGE PART REV. |
|-------------|------------------------|----------------------|
| 608-0005 | 01 | B |



| INTERNAL INVOLUTE SPLINE FLAT ROOT SIDE FIT - CLASS 5 FIT | |
|---|---------------------------|
| NO. OF TEETH | 9 |
| SPLINE PITCH | 20/40 |
| PRESSURE ANGLE | 30° |
| BASE DIAMETER | .3898 [9.9009] REF. |
| PITCH DIAMETER | .4500 [11.4300] REF. |
| MAJOR DIAMETER | .5190 [13.1826] MAX |
| FORM DIAMETER | .501 [12.7254] |
| MINOR DIAMETER | .405/.406 [10.287/10.312] |
| CIRCULAR SPACE WIDTH | |
| MAXIMUM ACTUAL | .0825 [2.0955] |
| MINIMUM EFFECTIVE | .0785 [1.9939] |
| SIZE BETWEEN Ø.108[2.743] PINS | ----- ----- |
| ANSI B92.1-1996 PROVISIONS APPLY | |

GASKETS THROUGHOUT
MAXIMUM SPLINE PITCH DIAMETER RUNOUT TO BE .004 [.102] T.I.R.

| | | |
|---|-----------------------------|-------------------|
| DRAWING REVISION B | REVISION BY CHRIS FISHER | DATE 2/23/2015 |
| ECO ECO-0072285 | APPROVED BY SCOTT DENSOW | DATE 2/23/2015 |
| ECO DESCRIPTION <p style="text-align: center;">BASE LOCATION WAS 3.58 [79.25]</p> <p style="text-align: center;">COPYRIGHT REGAL BELLOUT AMERICA, INC. ALL RIGHTS RESERVED.</p> <p>PROPRIETARY AND CONFIDENTIAL INFORMATION - THIS DOCUMENT IS THE PROPERTY OF REGAL BELLOUT AMERICA, INC. TOWNERS AND TOWNERS OWNERS OF ANY PROPRIETARY INFORMATION, ANY PERSON, CORPORATION OR OTHER FIRM RECEIVING IT IS DEEMED, BY RECEIVING IT, TO AGREE THAT IT AND ANY PART OF IT, SHALL NOT BE DISCLOSED TO ANY PERSON, CORPORATION OR OTHER ENTITY, DUPLICATED, AND USED, EXCEPT AS EXPRESSLY APPROVED IN WRITING IN REQUEST BY OWNER. THIS DOCUMENT SHALL BE RETURNED TO OWNER UPON ADVANCE BY IT. MAY BE SUBJECT TO CERTAIN RESTRICTIONS UNDER U.S. PATENT AND TRADE SECRET LAWS.</p> | | |

TOLERANCES UNLESS OTHERWISE SPECIFIED:



| DEC. | INCH | mm | ANGLE |
|-------|---------|-----------|-------|
| .X | ±0.1 | [±2.5] | ±0.5 |
| .XX | ±0.03 | [±0.76] | |
| .XXX | ±0.005 | [±0.127] | |
| .XXXX | ±0.0005 | [±0.0127] | |

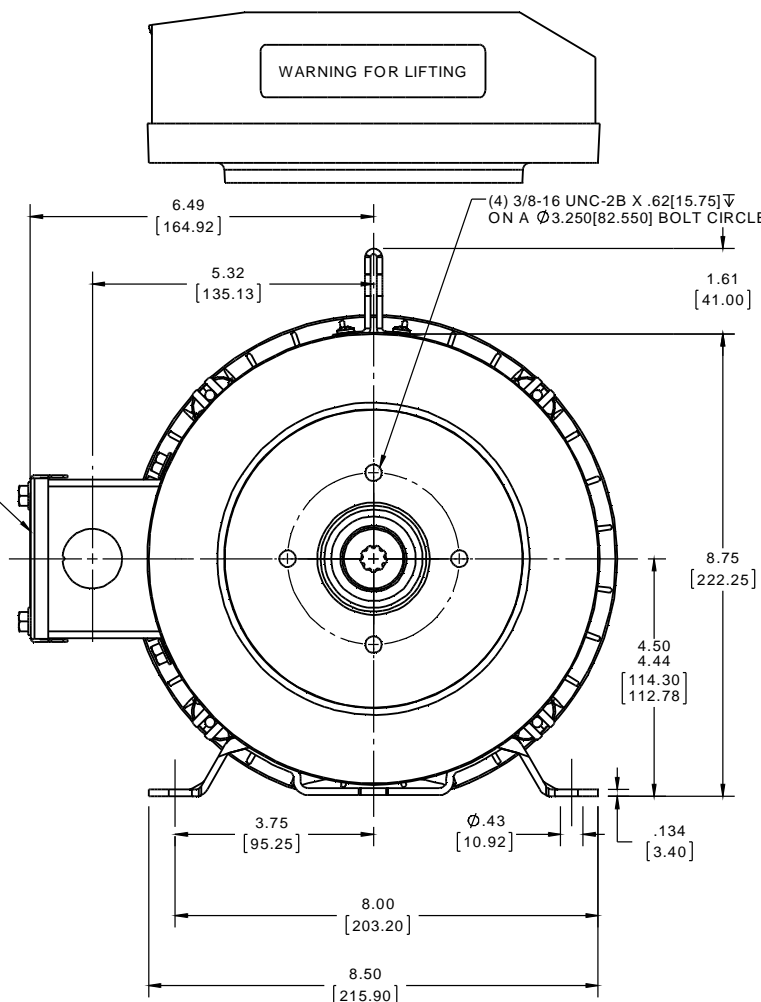
REMOVE BURRS & BREAK SHARP EDGES: .003/.015 [0.076/3.81]

CORNER FILLETS: .02 [.51]

MACHINED SURFACES: 125/INCH 3.2/mm

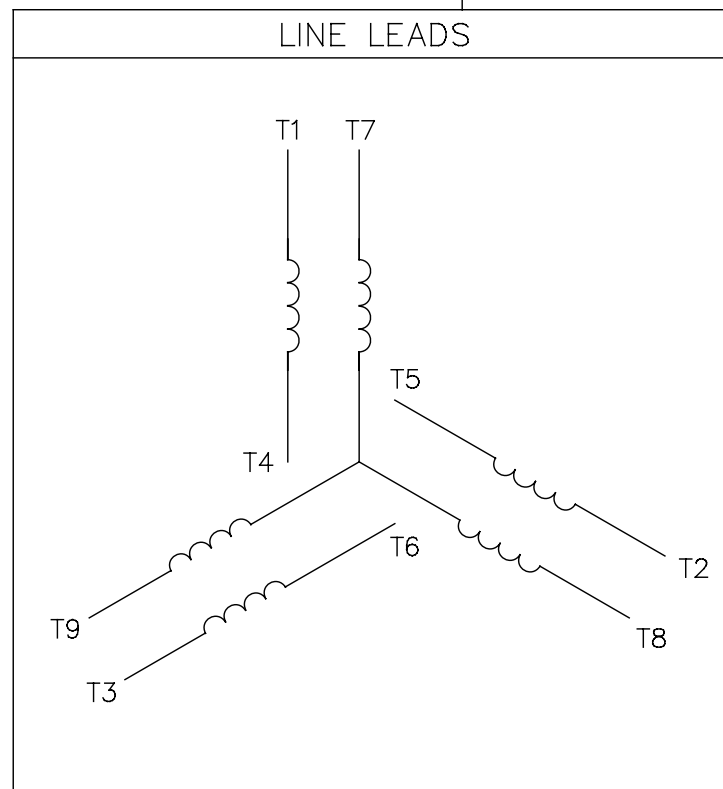
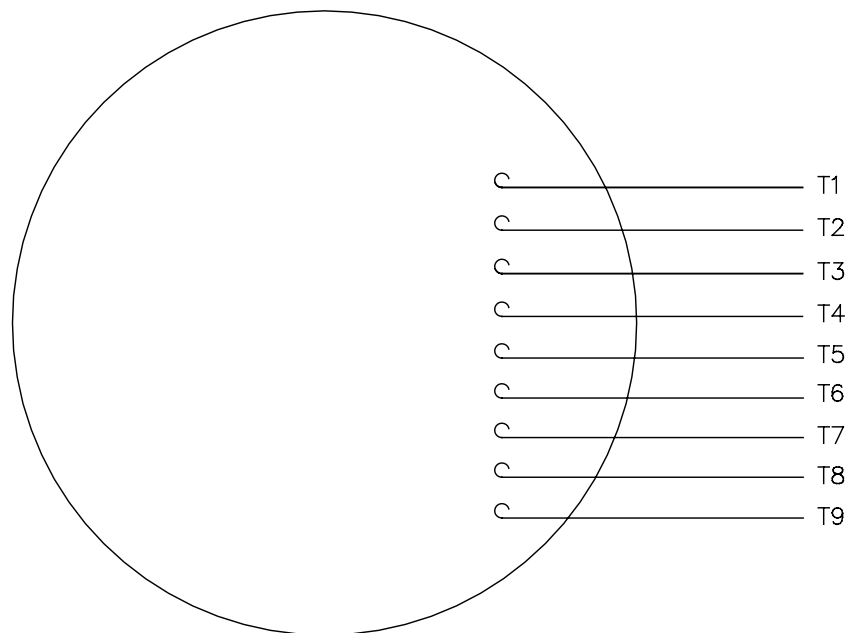
mm SHOWN IN [BRACKETS]

| | | | |
|---|--|---|-----------------------------------|
| DRAWN BY MITCH VERBICK | |  Regal Beloit America, Inc. | |
| DATE 2/4/2013 | | | |
| APPROVED BY | | DESCRIPTION OUTLINE 180 FR TEFC SAE AA 2-BOLT | |
| DATE | | | |
| PROCESS/FINISH | | MATERIAL | |
| THIRD ANGLE PROJECTION  | | SIZE B | DRAWING NUMBER 608-0005 |
| | | | SHEET 1 OF 1 |




005010-01

VIEW FROM OUTSIDE OF MOTOR AT SWITCH END.



| VOLTAGE | L1 | L2 | L3 | JOIN & INSULATE |
|---------|-------|-------|-------|-------------------------------|
| HIGH | T1 | T2 | T3 | (T4,T7) (T5,T8) (T6,T9) |
| LOW | T1,T7 | T2,T8 | T3,T9 | T4,T5,T6 |

| | | | | | | | | | | | |
|--|-----------------------|--------------|------|--------------------------------|----------|---|----------------|---|--------------|-------------|-----|
| | | | | TOLERANCES UNLESS SPECIFIED | |  Regal Beloit America, Inc. | | DRAWN | RDW 04/12/02 | | |
| | | | | DEC. | INCHES | | | CHK | | | |
| | | | | .X | ±.1 | | | APPD | | | |
| | | | | .XX | ±.01 | | | TITLE EXTERNAL WIRING DIAGRAM 3 PHASE W/O PROTECTOR | SCALE | 1=1 | |
| | | | | .XXX | ±.005 | REF | FIG.2-51 | | | | |
| A | UPDATED TO REGAL LOGO | SAJ 06/26/15 | AJY | .XXXX | ±.0005 | MAT'L. | DECAL - 004014 | FMF | | | |
| NO. | REVISION | BY & DATE | CHK | ANG | ±1/2* | FINISH | | PREV | | | |
| THIS DRAWING IN DESIGN AND DETAIL IS OUR PROPERTY AND MUST NOT BE USED EXCEPT IN CONNECTION WITH OUR WORK ALL RIGHTS OF DESIGN AND INVENTION ARE RESERVED THIS IS AN ELECTRONICALLY GENERATED DOCUMENT - DO NOT SCALE THIS PRINT | | | RFP | | 04/12/02 | CAD FILE | | 00501001 | SIZE | DRAWING NO. | REV |
| | | | DIST | | BRF-NLV | | | | A | 005010-01 | A |