

PRODUCT INFORMATION PACKET



Model No: 132539.00

Catalog No: 132539.00

132539.00..5HP..1760RPM.182TCZ.TEFC.208-230/460V.3PH.60HZ.CONT.40C.1.15SF.ROUND.....

Regal and Leeson are trademarks of Regal Rexnord Corporation or one of its affiliated companies.
©2024 Regal Rexnord Corporation, All Rights Reserved. MC017097E





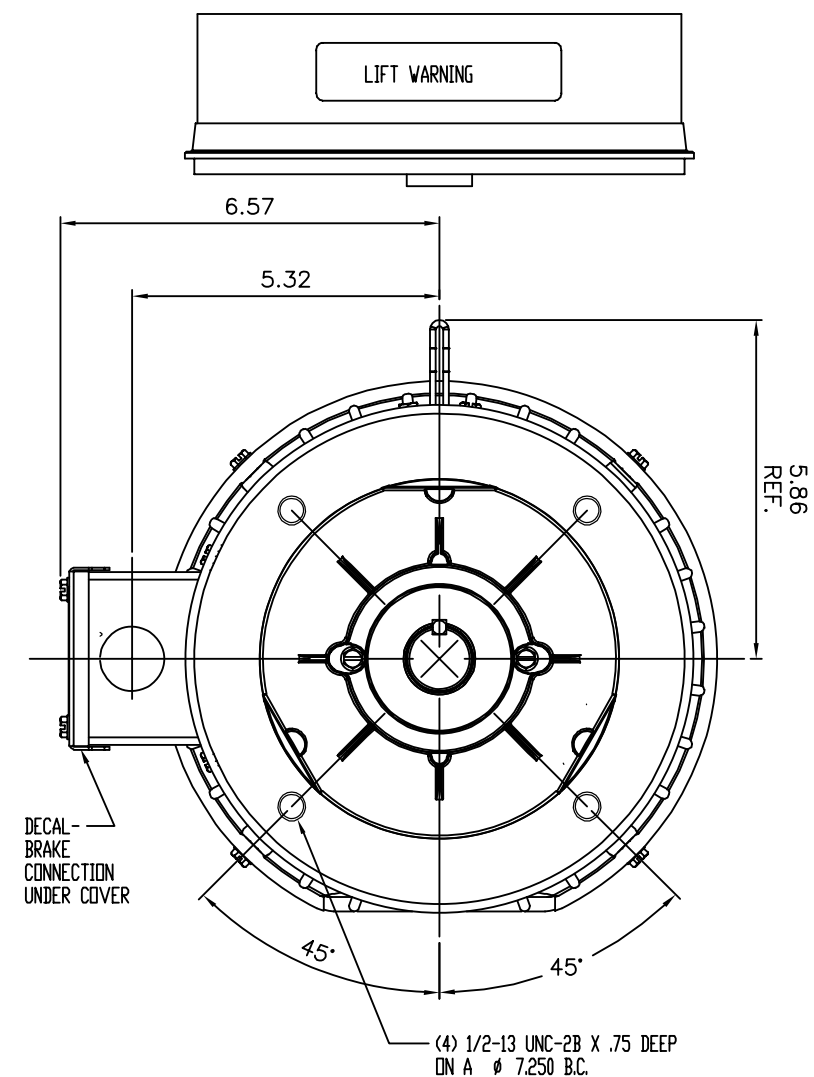
Nameplate Specifications

Phase	3	Output HP	5 Hp
Output KW	3.7 kW	Voltage	230/460 V
Speed	1760 rpm	Service Factor	1.15
Frame	182TCZ	Enclosure	Totally Enclosed Fan Cooled
Thermal Protection	No Protection	Efficiency	89.5 %
Ambient Temperature	40 °C	Frequency	60 Hz
Current	12.6/6.3 A	Power Factor	83
Duty	Continuous	Insulation Class	F
Design Code	B	KVA Code	G
Drive End Bearing Size	6206	Opp Drive End Bearing Size	6205
UL	Recognized	CSA	Y
CE	Y	IP Code	43
Number of Speeds	1		

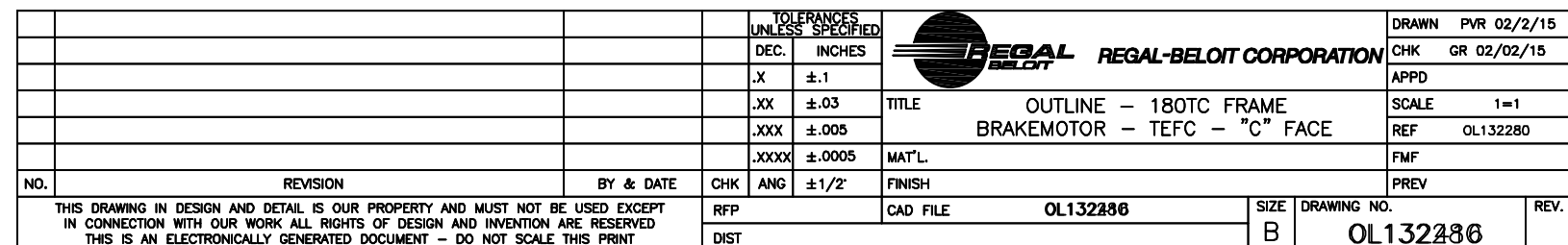
Technical Specifications

Electrical Type	Squirrel Cage Induction Run	Starting Method	Across The Line
Poles	4	Rotation	Reversible
Resistance Main	2.68 Ohms	Mounting	Round
Motor Orientation	Horizontal	Drive End Bearing	Ball
Opp Drive End Bearing	Ball	Frame Material	Rolled Steel
Shaft Type	Special Extension Both Sides	Assembly/Box Mounting	F1 ONLY
Outline Drawing	OL132416-950	Connection Drawing	005010.15

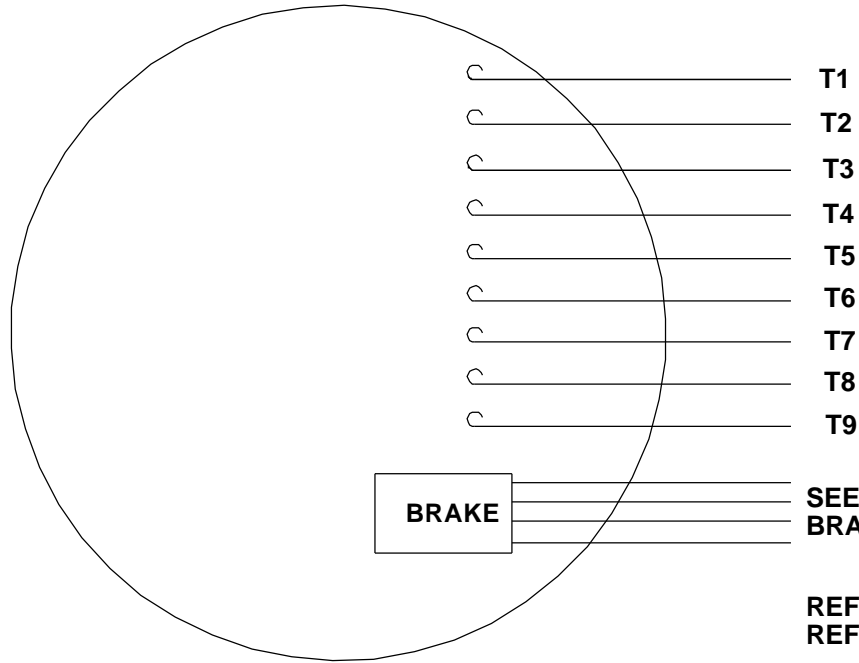
This is an uncontrolled document once printed or downloaded and is subject to change without notice. Date Created:09/07/2024



GASKETS THROUGHOUT
MAXIMUM FACE RUNOUT TO BE .004 T.I.R.
MAXIMUM PILOT ECCENTRICITY TO BE .004 T.I.R.
PERMISSIBLE SHAFT RUNOUT TO BE .002 T.I.R.



VIEW FROM OUTSIDE OF MOTOR AT SWITCH END.

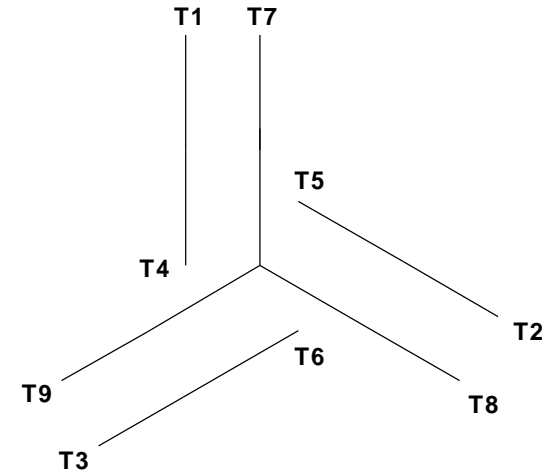


CAUTION:
LEAD WIRE INSULATION TO EXTEND
MINIMUM OF 1/4" INTO CONNECTOR
INSULATION

**SEE TABLE FOR
BRAKE CONNECTIONS**

REF. DECAL (MOTOR) - 004014
REF. DECAL (BRAKE) - 080034 (STEARNS & DINGS BRAKE)

LINE LEADS




VOLTAGE	L1	L2	L3	JOIN & INSULATE
HIGH	T1	T2	T3	(T4, T7) (T5, T8) (T6, T9)
LOW	T1, T7	T2, T8	T3, T9	T4, T5, T6

RBC PROPRIETARY AND CONFIDENTIAL INFORMATION
This document is the property of REGAL BELOIT CORPORATION ("RBC") including its subsidiaries and divisions and contains proprietary information of RBC. This document is loaned on the express condition that neither it nor the information contained therein shall be disclosed to others without the express written consent of RBC, and that the information shall be used by the recipient only as approved expressly by RBC. This document shall be returned to RBC upon its request. This document may be subject to certain restrictions under U.S. export control laws and regulations.

TYPE "T" W/O PROTECTOR

BRAKE CONNECTION						
VOLTAGE	STEARNS BRAKE			DINGS BRAKE		
	L1	L2	Join	L1	L2	Join
HIGH	1(RED)	2(RED)	3(BLACK) 4(BLACK)	2(BLACK)	4(YELLOW)	1(YELLOW) 3(BLACK)
LOW	1(RED) 3(BLACK)	2(RED) 4(BLACK)	-----	2(BLACK) 3(BLACK)	1(YELLOW) 4(YELLOW)	-----

				TOLERANCES UNLESS SPECIFIED	 ELECTRIC MOTORS GEARMOTORS AND DRIVES	DRAWN JJK 09/17/96
				DEC INCHES		CHK
				.X ±.1		APPR
				.XX ±.01	TITLE EXTERNAL WIRING DIAGRAM STANDARD 3 PHASE - DUAL VOLTAGE	SCALE 1:1
--	REDRAWN IN SOLIDWORKS	VJB 02/08/11	.XXX ±.005			REF 005010-01
01	ADDED DINGS AND BRAKE TABLE (PER CN114156)	TMZ 11/12/96	.XXXX ±.0005		MAT'L W/STEARNS OR DINGS DUAL VOLTAGE BRAKE CONN.	FMF
NO	REVISION	BY & DATE	CHK ANG ±1/2°	FINISH LEESON STOCK		PAGE OF
THIRD ANGLE PROJECTION			RFP	PREV	SIZE A	DRAWING NO 005010-15
			NETWORK FILE NAME 00501015			REV --