

PRODUCT INFORMATION PACKET



Model No: 132524.00

Catalog No: 132524.00

132524.00..3HO..1740RPM.184TCZ.ODP.208-230/460V.3PH.60HZ.CONT.40C.1.15SF.....

Regal and Leeson are trademarks of Regal Rexnord Corporation or one of its affiliated companies.

©2023 Regal Rexnord Corporation, All Rights Reserved. MC017097E





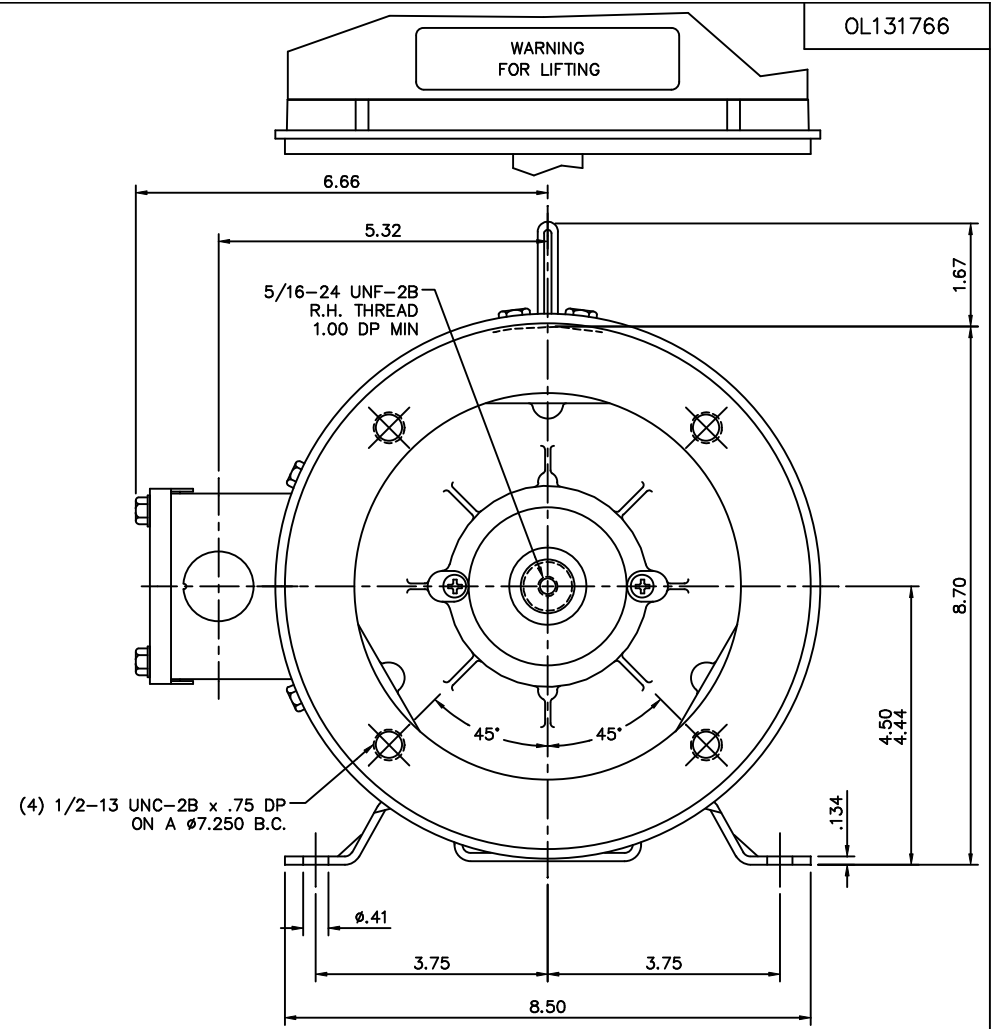
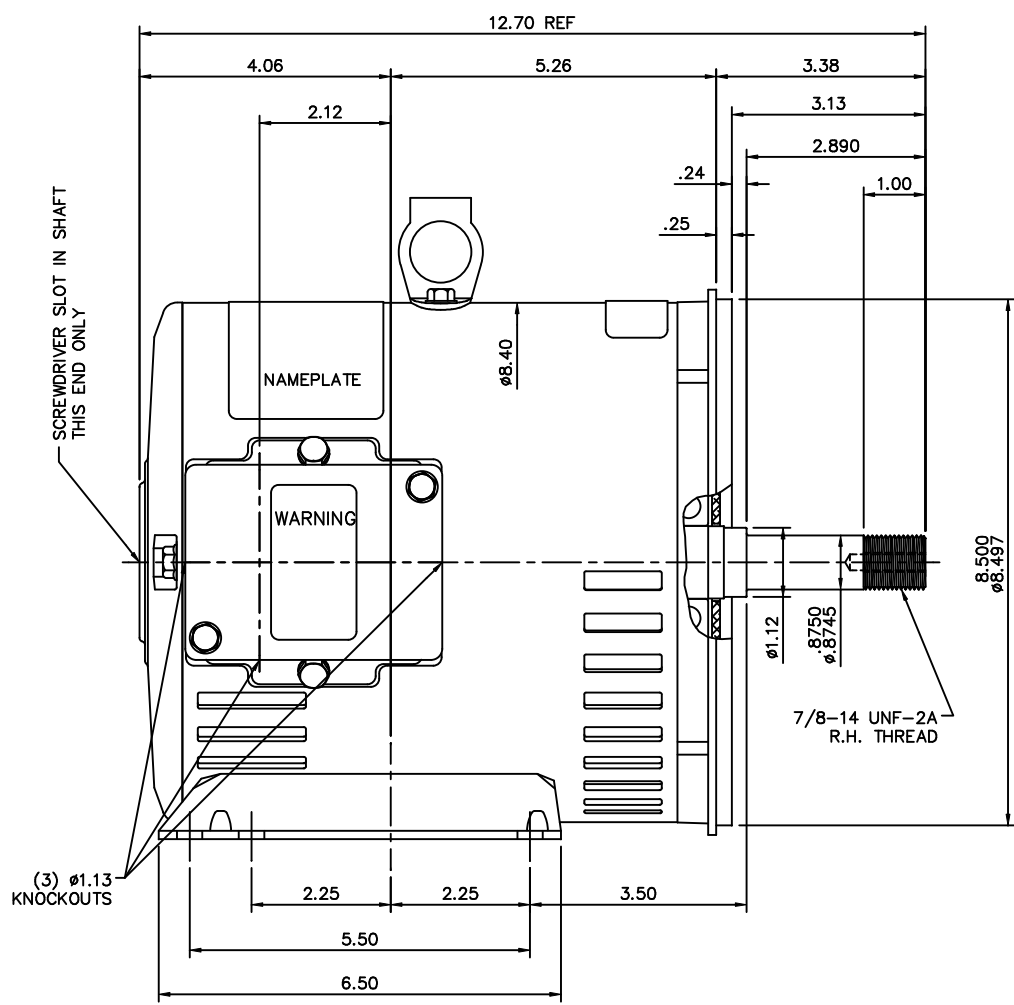
Nameplate Specifications

Output HP	3 Hp	Output KW	2.2 kW
Frequency	60 Hz	Voltage	230/460 V
Current	8.0/4.0 A	Speed	1760 rpm
Service Factor	1.15	Phase	3
Efficiency	89.5 %	Power Factor	79
Duty	Continuous	Insulation Class	F
Design Code	B	KVA Code	K
Frame	184TCZ	Enclosure	Drip Proof
Thermal Protection	No Protection	Ambient Temperature	40 °C
Drive End Bearing Size	6206	Opp Drive End Bearing Size	6205
UL	Recognized	CSA	Y
CE	N	IP Code	22
Number of Speeds	1		

Technical Specifications

Electrical Type	Squirrel Cage Induction Run	Starting Method	Across The Line
Poles	4	Rotation	Reversible
Resistance Main	3.89 Ohms	Mounting	Rigid Base
Motor Orientation	Horizontal	Drive End Bearing	Ball
Opp Drive End Bearing	Ball	Frame Material	Rolled Steel
Shaft Type	Single Special Extension	Assembly/Box Mounting	F1 ONLY
Connection Drawing	005010.01	Outline Drawing	OL131766-900

This is an uncontrolled document once printed or downloaded and is subject to change without notice. Date Created:03/30/2023



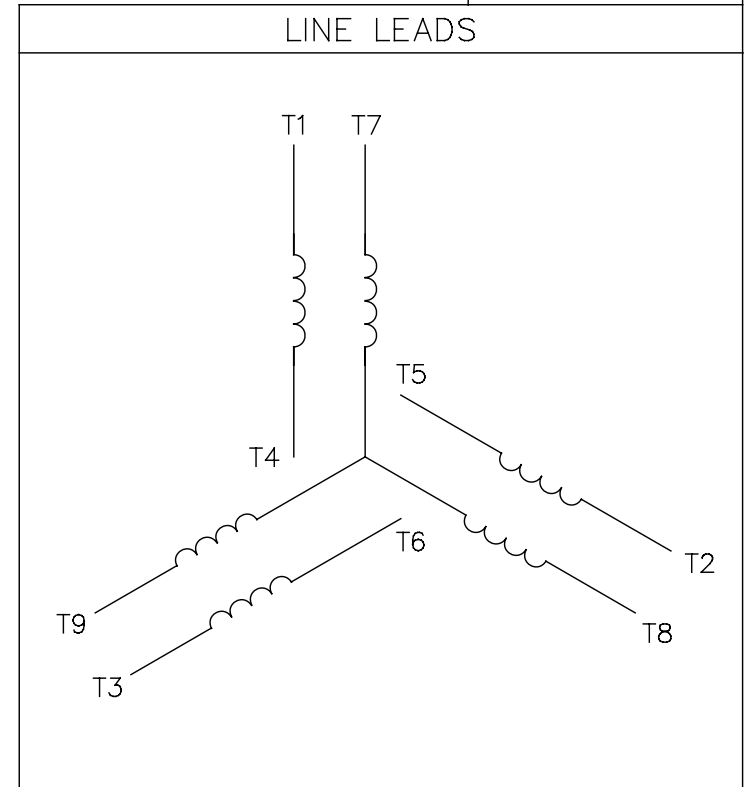
MAXIMUM FACE RUNOUT .004 TIR
MAXIMUM PILOT ECCENTRICITY .004 TIR
PERMISSIBLE SHAFT RUNOUT .004 TIR

						<div><div>LEESON</div></div>		ELECTRIC MOTORS GEARMOTORS AND DRIVES		DRAWN SAW 5/27/99		
				DEC.	INCHES					CHK RSK 5/27/99		
03	UPDATED PER MT2 CONVERSION ISAAC 10-0415	LST	1/28/10	.X	±.1	TITLE		OUTLINE - 184TCZ FRAME OPEN DRIP PROOF - "C" FACE		APPD RSK 5/27/99		
02	ROTATED WIRING INSTRUCTIONS FROM HORIZONTAL	RLW	6/1/05	.XX	±.03					SCALE 1=2		
01	REMOVED SHOULDER FOR EXTERNAL THREAD	KMM	6/1/05	RDW.XXX	±.005					REF PR990001		
	PER ECO #00-1542			.XXX	±.0005					FIMF 131766		
NO.		REVISION		BY & DATE		CHK ANG ±1/2"		FINISH		PREV		
THIS DRAWING IN DESIGN AND DETAIL IS OUR PROPERTY AND MUST NOT BE USED EXCEPT IN CONNECTION WITH OUR WORK ALL RIGHTS OF DESIGN AND INVENTION ARE RESERVED THIS IS AN ELECTRONICALLY GENERATED DOCUMENT - DO NOT SCALE THIS PRINT				RFP		CAD FILE		OL131766		SIZE	DRAWING NO.	REV.
				DIST NLV						B	OL131766	03


THIS DRAWING IN DESIGN AND DETAIL IS OUR PROPERTY AND MUST NOT BE USED EXCEPT
IN CONNECTION WITH OUR WORK ALL RIGHTS OF DESIGN AND INVENTION ARE RESERVED
THIS IS AN ELECTRONICALLY GENERATED DOCUMENT - DO NOT SCALE THIS PRINT

005010-01

VIEW FROM OUTSIDE OF MOTOR AT SWITCH END.



VOLTAGE	L1	L2	L3	JOIN & INSULATE
HIGH	T1	T2	T3	(T4,T7) (T5,T8) (T6,T9)
LOW	T1,T7	T2,T8	T3,T9	T4,T5,T6

				TOLERANCES UNLESS SPECIFIED		 Regal Beloit America, Inc.			DRAWN RDW 04/12/02		
				DEC.	INCHES				CHK		
				.X	±.1				APPD		
				.XX	±.01				SCALE 1=1		
				.XXX	±.005	TITLE EXTERNAL WIRING DIAGRAM 3 PHASE W/O PROTECTOR			REF FIG.2-51		
A	UPDATED TO REGAL LOGO	SAJ 06/26/15	AJY	.XXXX	±.0005				MAT'L DECAL - 004014		
NO.	REVISION	BY & DATE	CHK	ANG	±1/2"	FINISH			PREV		
THIS DRAWING IN DESIGN AND DETAIL IS OUR PROPERTY AND MUST NOT BE USED EXCEPT IN CONNECTION WITH OUR WORK ALL RIGHTS OF DESIGN AND INVENTION ARE RESERVED THIS IS AN ELECTRONICALLY GENERATED DOCUMENT - DO NOT SCALE THIS PRINT				RFP 04/12/02		CAD FILE 00501001		SIZE A	DRAWING NO. 005010-01		REV. A
				DIST BRF-NLV							