

# PRODUCT INFORMATION PACKET



Model No: 132519.00

Catalog No: 132519.00

132519.00..3/3HP..1733/1443RPM.182TC.TEFC.230/230V.3PH.60/50HZ.CONT.40C.1.0SF.ROUND.....

Regal and Leeson are trademarks of Regal Rexnord Corporation or one of its affiliated companies.

©2023 Regal Rexnord Corporation, All Rights Reserved. MC017097E





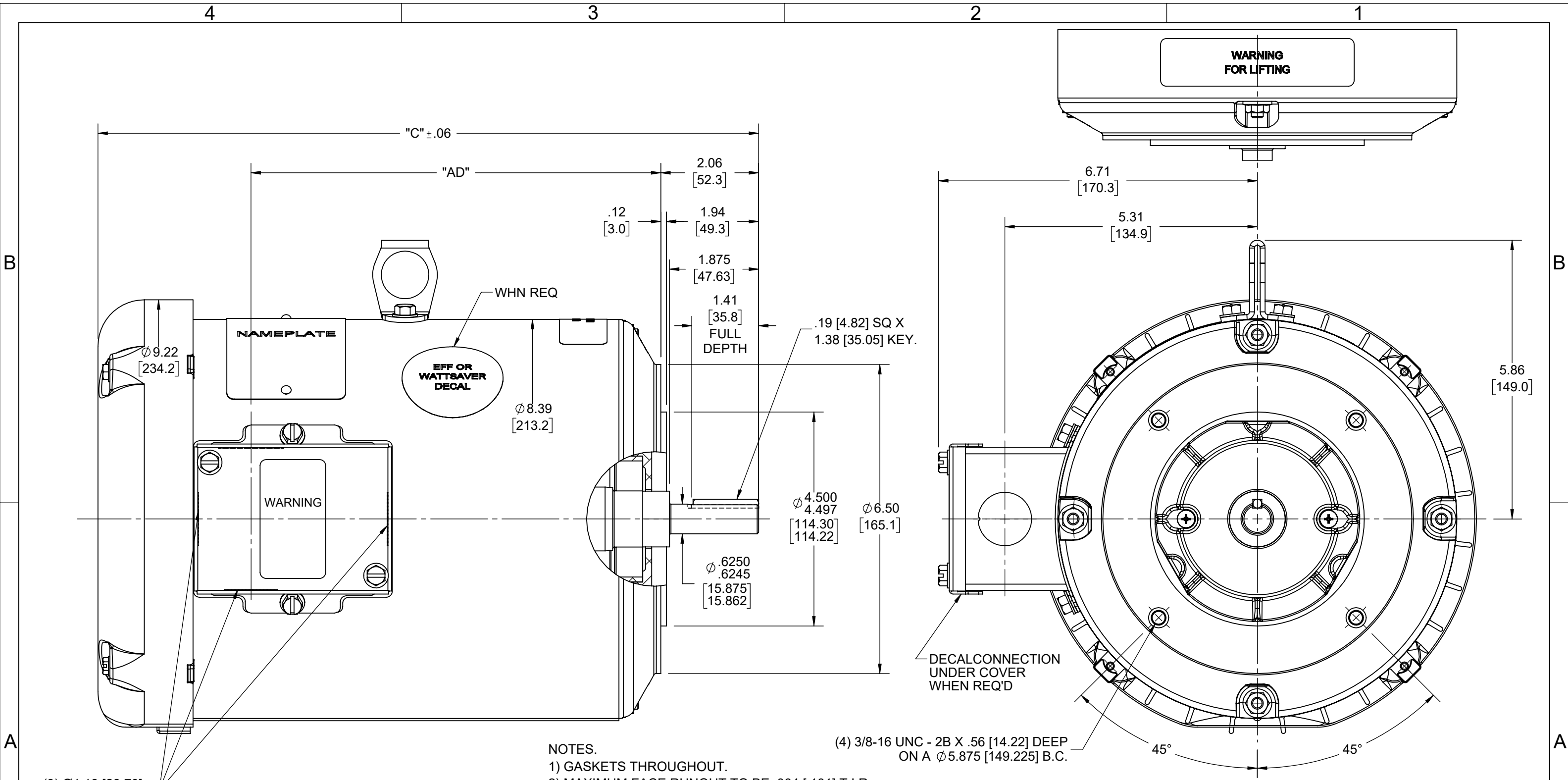
### Nameplate Specifications

Phase	3	Output HP	3 & 3 Hp
Output KW	2.2 & 2.2 kW	Voltage	230 & 230 V
Speed	1770 & 1475 rpm	Service Factor	1.0 & 1.0
Frame	182TCZ	Enclosure	Totally Enclosed Fan Cooled
Thermal Protection	Thermostat	Efficiency	89.5 & 88.5 %
Ambient Temperature	40 °C	Frequency	60 & 50 Hz
Current	7.8 & 9 A	Power Factor	80.5
Duty	Continuous	Insulation Class	F
Design Code	B	KVA Code	K
Drive End Bearing Size	6206	Opp Drive End Bearing Size	6205
UL	Recognized	CSA	Y
CE	N	IP Code	43
Number of Speeds	1		

### Technical Specifications



Electrical Type	Squirrel Cage Induction Run	Starting Method	Across The Line
Poles	4	Rotation	Reversible
Resistance Main	6.08 Ohms	Mounting	Round
Motor Orientation	Horizontal	Drive End Bearing	Ball
Opp Drive End Bearing	Ball	Frame Material	Rolled Steel
Shaft Type	Single Special Extension	Assembly/Box Mounting	F1 ONLY
Outline Drawing	036202-850	Connection Drawing	005102.10

This is an uncontrolled document once printed or downloaded and is subject to change without notice. Date Created:06/23/2023



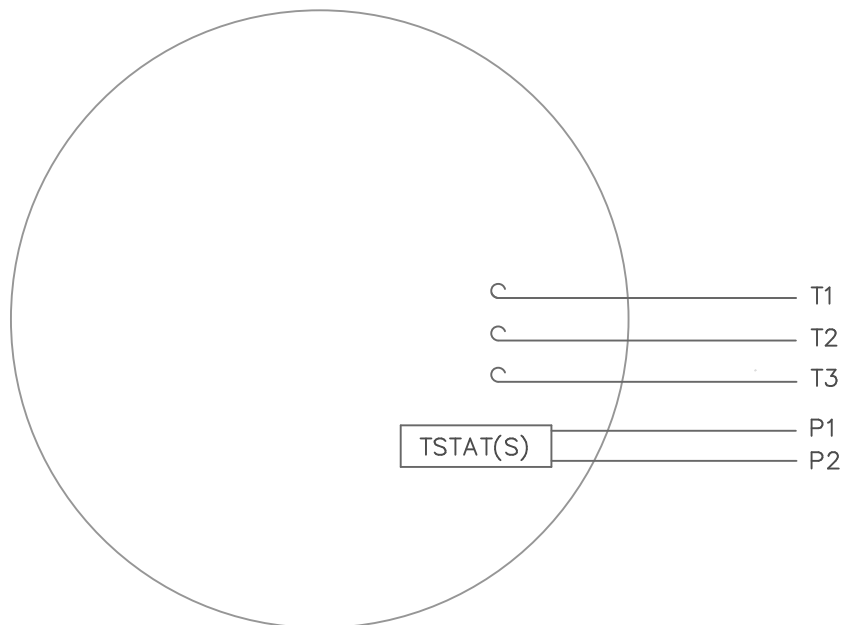
- NOTES.
- 1) GASKETS THROUGHOUT.
  - 2) MAXIMUM FACE RUNOUT TO BE .004 [.101] T.I.R.
  - 3) MAXIMUM PILOT ECCENTRICITY TO BE .004 [.101] T.I.R.
  - 4) PERMISSIBLE SHAFT RUNOUT TO BE .010 [.254] T.I.R.

DASH NO.	"C"	"AD"
850	13.52 [343.41]	8.12 [206.24]
900	14.02 [356.11]	8.62 [218.94]
1000	15.02 [381.52]	9.62 [244.34]

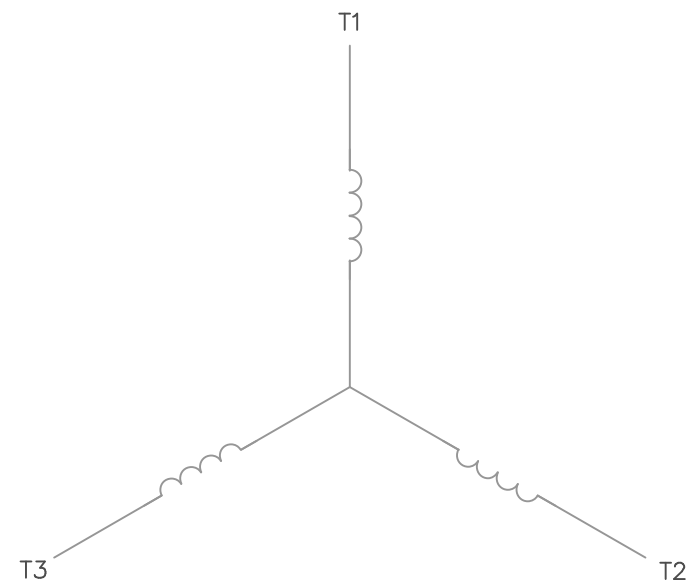
DRAWING REVISION F		REVISION BY SD		REV DATE/© DATE 11/02/2021		TOLERANCES (EXCEPT AS NOTED): DEC. INCH mm ANGLE .X ±0.1 [±3] ±7° 30" .XX ±0.03 [±0.8] .XXX ±0.005 [±0.13] .XXXX ±0.0005 [±0.013] REMOVE BURRS & BREAK SHARP EDGES: .003/.015 [.08/.38] X 45° CORNER FILLETS: R.02 [.5] MACHINED SURFACES: 200 INCH/mm 5.1 mm DIMENSIONS IN [BRACKETS] ARE FOR REFERENCE ONLY				DRAWN BY KIR		<div>Regal Beloit America, Inc.</div>				
REQUEST NUMBER CR-0005103		APPROVED BY VR		DATE 11/02/2021						DATE 03/30/16						
REQUEST NUMBER DESCRIPTION DASH ITEM DIMENSIONS UPDATED								APPROVED BY SR		DESCRIPTION 184TCZ FRAME TEFC-"C" FACE						
COPYRIGHT (PER REVISION DATE) REGAL BELOIT AMERICA, INC. ALL RIGHTS RESERVED. PROPRIETARY AND CONFIDENTIAL INFORMATION - THIS DOCUMENT IS THE PROPERTY OF REGAL BELOIT AMERICA, INC. ("OWNER") AND CONTAINS OWNER'S PROPRIETARY INFORMATION. ANY PERSON, CORPORATION OR OTHER FIRM RECEIVING IT IS DEEMED, BY RECEIVING IT, TO AGREE THAT IT, AND/OR ANY PART OF IT, SHALL NOT BE DISCLOSED TO ANY PERSON, CORPORATION OR OTHER ENTITY, DUPLICATED, AND/OR USED, EXCEPT AS EXPRESSLY APPROVED IN WRITING IN ADVANCE BY OWNER. THIS DOCUMENT SHALL BE RETURNED TO OWNER UPON REQUEST. IT MAY BE SUBJECT TO CERTAIN RESTRICTIONS UNDER APPLICABLE EXPORT CONTROL LAWS AND REGULATIONS.								DATE 03/30/16		REFERENCE OL132522			MATERIAL		PROCESS/FINISH	
										THIRD ANGLE PROJECTION				SIZE B	DRAWING NUMBER 036202	

005102-10

VIEW FROM OUTSIDE OF MOTOR AT SWITCH END.



LINE LEADS



CONNECT LEADS AS FOLLOWS

LINE	L1	L2	L3	
MOTOR	T1	T2	T3	

				TOLERANCES UNLESS OTHERWISE SPECIFIED		LEESON ELECTRIC CORPORATION					
				DECIMALS							
				.00	± .01	DRAWN DWF 3/19/98	TITLE			EXT. WIRING DIAGRAM	
				.000	± .005	CH'K'D.				TYPE "T" W/O PROTECTOR	
				.0000	± .0005	APPR.	MAT'L			DECAL - 004169	
NO.	REVISION		BY	DATE	FRACTIONS	± 1/64	SCALE 1=1	NLV			BRF
THIS DRAWING IN DESIGN AND DETAIL IS OUR PROPERTY AND MUST NOT BE USED EXCEPT IN CONNECTION WITH OUR WORK ALL RIGHTS OF DESIGN AND INVENTION ARE RESERVED					ANGLES	± 1/2'	REF. 005102.01	FINISH		SIZE	DRAWING NO.
					INCH/MM		FMF 121372	PRIME		A	005102-10

THIS DRAWING IN DESIGN AND DETAIL IS OUR PROPERTY  
AND MUST NOT BE USED EXCEPT IN CONNECTION WITH OUR WORK  
ALL RIGHTS OF DESIGN AND INVENTION ARE RESERVED