

# PRODUCT INFORMATION PACKET



Model No: 132466.00

Catalog No: 132466.00

Special Voltage Motor, 5 HP, 3 Ph, 60 Hz, 200-208/400-416 V, 1800 RPM, 184T Frame, TEFC



Regal and Leeson are trademarks of Regal Rexnord Corporation or one of its affiliated companies.

©2023 Regal Rexnord Corporation, All Rights Reserved. MC017097E





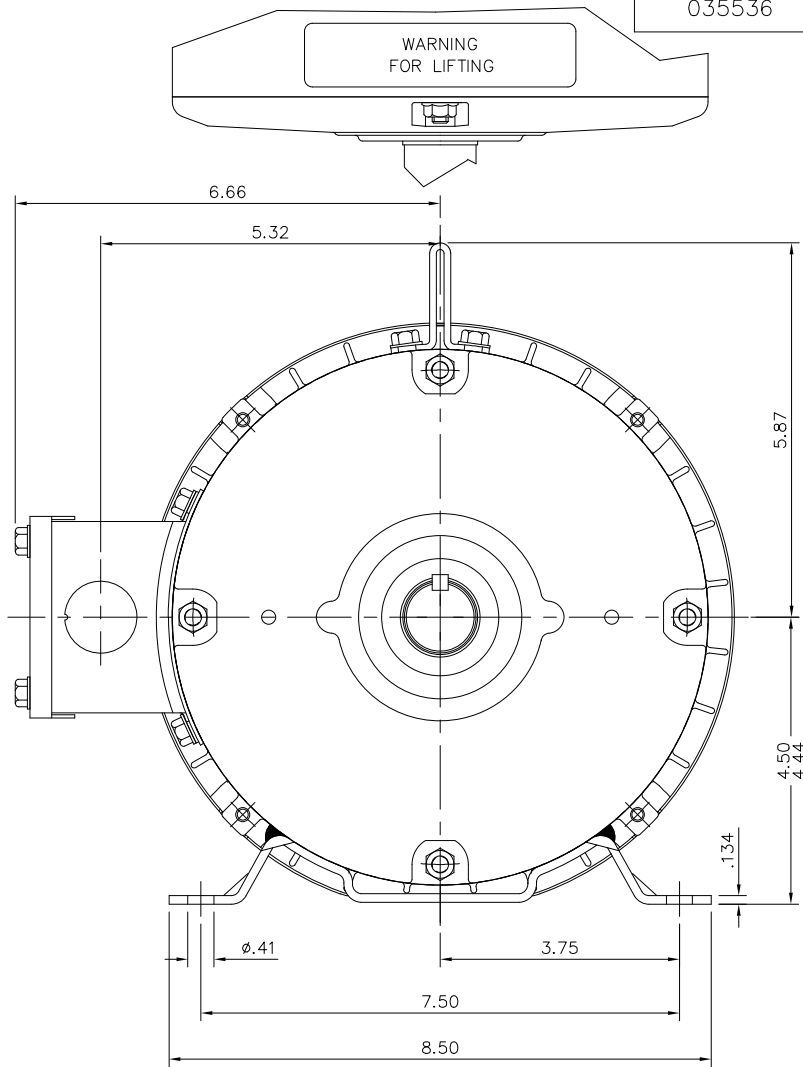
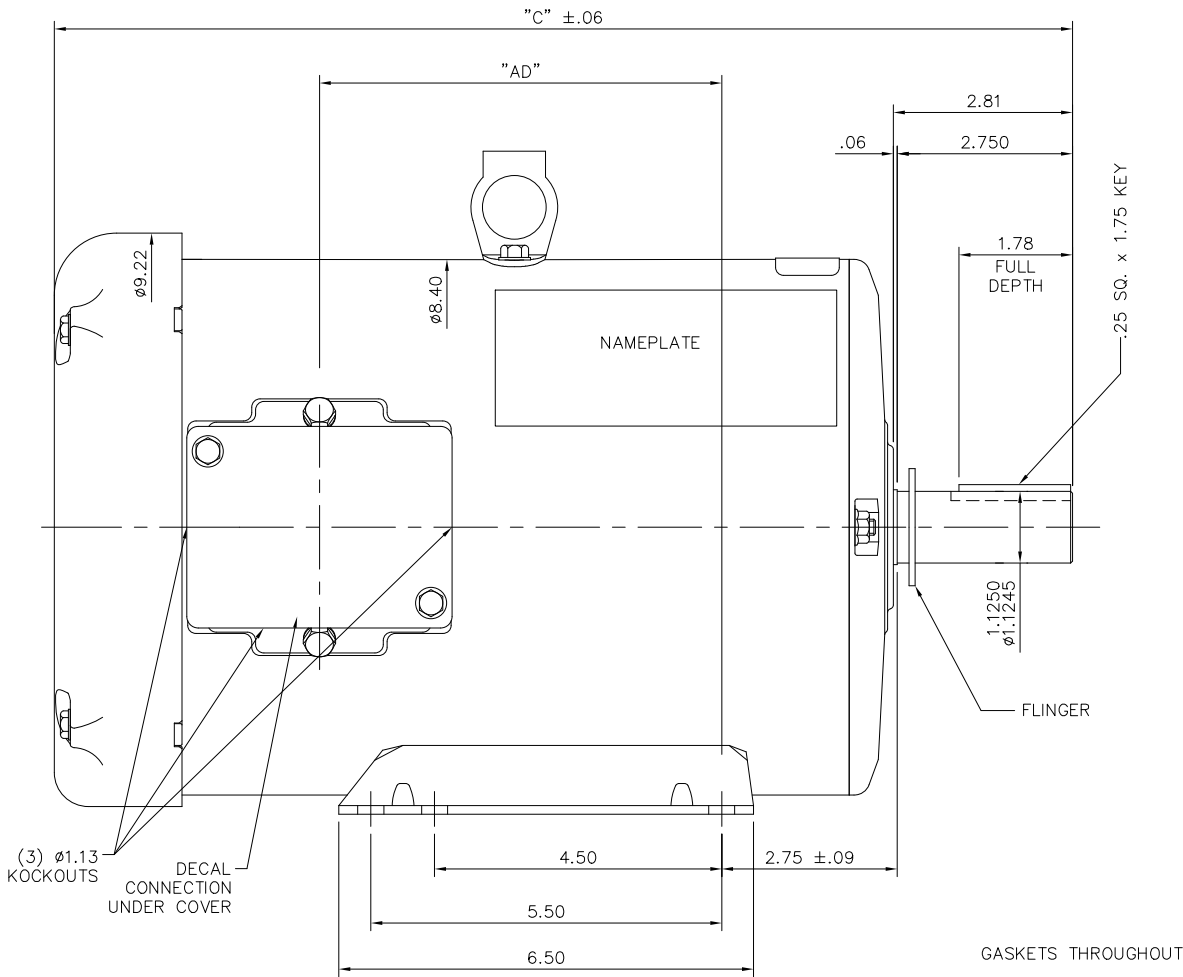
## Nameplate Specifications

Phase	3	Output HP	5 Hp
Output KW	3.7 kW	Voltage	200-208/400-416 V
Speed	1760 rpm	Service Factor	1.15
Frame	184T	Enclosure	Totally Enclosed Fan Cooled
Thermal Protection	No Protection	Efficiency	89.5 %
Ambient Temperature	40 °C	Frequency	60 Hz
Current	14.4-14.0/7.2-7.0 A	Power Factor	83.1
Duty	Continuous	Insulation Class	F
Design Code	B	KVA Code	J
Drive End Bearing Size	6206	Opp Drive End Bearing Size	6205
UL	Recognized	CSA	Y
CE	Y	IP Code	43
Number of Speeds	1		

## Technical Specifications


Electrical Type	Squirrel Cage Induction Run	Starting Method	Across The Line
Poles	4	Rotation	Reversible
Resistance Main	2.68 Ohms	Mounting	Rigid Base
Motor Orientation	Horizontal	Drive End Bearing	Ball
Opp Drive End Bearing	Ball	Frame Material	Rolled Steel
Shaft Type	T	Overall Length	14.97 in
Frame Length	9.50 in	Shaft Diameter	1.125 in
Shaft Extension	2.75 in	Assembly/Box Mounting	F1/F2 CAPABLE
Outline Drawing	035536-950	Connection Drawing	005010.01

035536



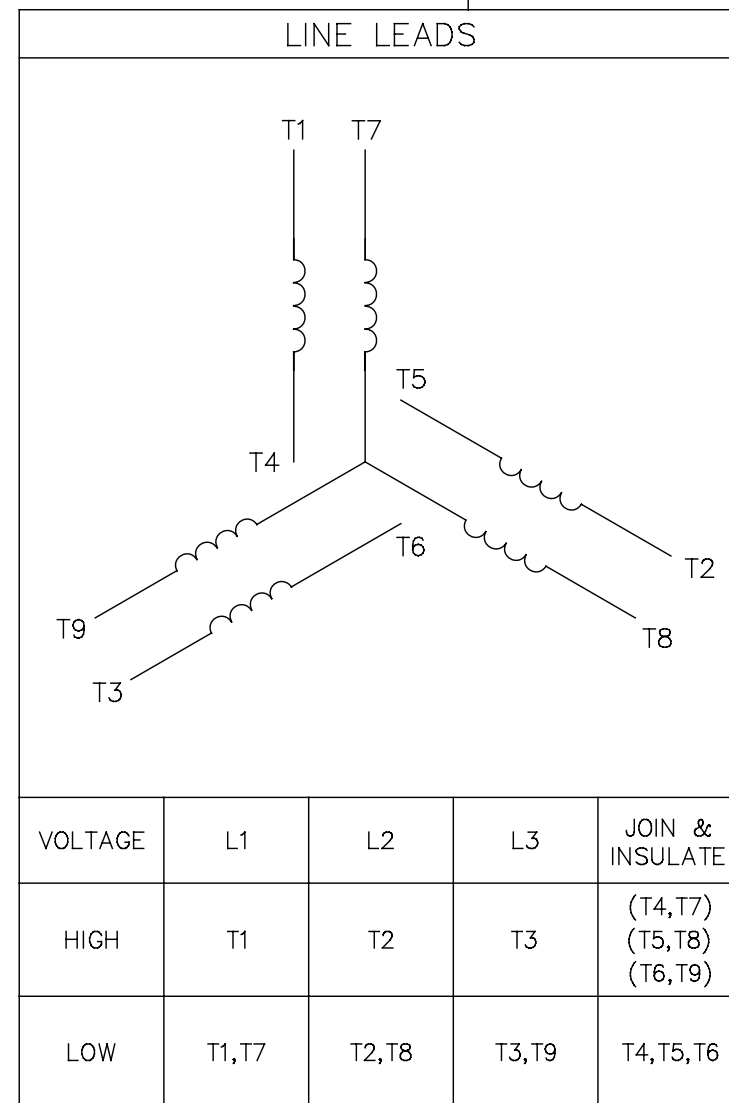
DASH NO.	"C"	"AD"
750	12.97	3.37
800	13.47	3.87
850	13.97	4.37
900	14.47	4.87
950	14.97	5.37
1000	15.47	5.87
1050	15.97	6.37
1100	16.47	6.87
1150	16.97	7.37

ORACLE REV  
003

				TOLERANCES UNLESS SPECIFIED			DRAWN VV 07/02/07	
				DEC.	INCHES		CHK SV 07/02/07	
04	Updated Nameplate location	JG 09/06/23	TS	.X	±.1	TITLE OUTLINE- 180T FRAME TEFC- RIGID	APPD VS 07/02/07	
03	ADDED FLINGER	PVR 02/10/15	ST	.XX	±.03		SCALE 1=2	
02	WHEN REQD NOTE ADDED FOR 'XRI' DECAL	GR 02/07/13	AK	.XXX	±.005		REF	
01	UPDATED FRAME LENGTH TABLE	PVR 08/31/12	JD	.XXXX	±.0005		FMF	
NO.	REVISION	BY & DATE	CHK	ANG	±1/2"	FINISH	PREV	
			RFP			CAD FILE 035536	SIZE B	DRAWING NO. 035536
			DIST					REV. 04

005010-01

VIEW FROM OUTSIDE OF MOTOR AT SWITCH END.



				TOLERANCES UNLESS SPECIFIED		 <b>Regal Beloit America, Inc.</b>			DRAWN	RDW 04/12/02		
				DEC.	INCHES				CHK			
				.X	±.1				APPD			
				.XX	±.01				SCALE	1=1		
				.XXX	±.005	TITLE	EXTERNAL WIRING DIAGRAM 3 PHASE W/O PROTECTOR			REF	FIG.2-51	
A	UPDATED TO REGAL LOGO		SAJ 06/26/15	AJY	.XXXX	±.0005	MAT'L. DECAL - 004014			FMF		
NO.	REVISION		BY & DATE	CHK	ANG	±1/2"	FINISH			PREV		
THIS DRAWING IN DESIGN AND DETAIL IS OUR PROPERTY AND MUST NOT BE USED EXCEPT IN CONNECTION WITH OUR WORK ALL RIGHTS OF DESIGN AND INVENTION ARE RESERVED THIS IS AN ELECTRONICALLY GENERATED DOCUMENT - DO NOT SCALE THIS PRINT				RFP	04/12/02		CAD FILE		00501001	SIZE	DRAWING NO.	REV
				DIST BRF-NLV				A	005010-01		A	



1051 CHEYENNE AVE.  
GRAFTON, WI 53024  
PH. 262-277-8810

DATA VOLTS: 460

### CERTIFICATION DATA SHEET

CONN. DIAGRAM: 005010.01

CAT #: 132466.00

OUTLINE: 035536-950

WINDING: T84170

FR 10

### TYPICAL MOTOR PERFORMANCE DATA

HP	KW	SYNC RPM	FL RPM	FRAME	ENCLOSURE	TYPE	KVA CODE	DESIGN
5	3.7	1800	1760	184T	TEFC	TFW	J	B

PH	HZ	VOLTS	AMPS	START TYPE	DUTY	INSL	S.F.	AMB	ELEV.
3	60	208/416	13.9/7	ACROSS THE LINE	CONT	F	1.15	40	3300

F.L. EFF	89.5	3/4 LD EFF	90.2	1/2 LD EFF	88.9	GTD EFF		ELECT. TYPE	
F.L. PF	83.1	3/4 LD PF	79.4	1/2 LD PF	70.9		87.5	SQ CAGE IND RUN	

F.L. TORQUE	LR AMPS @ 460 V	L.R. TORQUE	B.D. TORQUE	F.L. RISE (° C)
15.0 LB-FT	54.2	30.1 LB-FT 201%	50.2 LB-FT 335%	65

PRESSURE @ 3	SOUND	POWER	ROTOR WK²	MAX. LOAD WK²	SAFE STALL TIME	STARTS/HOUR	MOTOR WGT
55 dBA	64 dBA		0.49 LB-FT²	0 LB-FT²	15 SEC.	2	0 LB.

### \*\*\* SUPPLEMENTAL INFORMATION \*\*\*

DE BRACKET TYPE	ODE BRACKET TYPE	MOUNT TYPE	MOTOR ORIENTATION	SEVERE DUTY	HAZARDOUS LOCATION	DRIP COVER	SCREENS	PAINT
STANDARD	STANDARD	RIGID	HORIZONTAL	NO	NONE	NO	NONE	WATTSaver

BEARINGS	GREASE	SHAFT TYPE	SPECIAL DE	SPECIAL ODE	SHAFT MATERIAL	FRAME MATERIAL
DE ODE						
BALL BALL	POLYREX EM	T	NONE	NONE	AISI 1045 (C-240)	ROLLED STEEL
6206 6205						

THERMOSTATS	PROTECTORS	WDG RTD's	BRG RTD's	THERMISTORS	CONTROL	SPACE HEATERS
NONE	NOT	NONE	NONE	NONE	FALSE	NA

R1 (ohms/ph)	R2 (ohms/ph)	X1 (ohms/ph)	X2 (ohms/ph)	Xm (ohms/ph)	VIBRATION (in/sec)	FLOAT
0	0	0	0	0	0.150	ODE

* N O T E S *		INVERTER TORQUE: NONE INV. HP SPEED RANGE: NONE
	ENCODER: NONE NONE NONE	NONE PPR

DATE: 9/6/2018	BRAKE: NONE NONE	NONE
	FT-LB: NA	
	VOLTAGE: NONE	HZ:
UL: Y-(LEESON UL REC)		

## Data Sheet

Date: 9/6/2018

132466.00



Data @ 416 V

## Motor Load Data

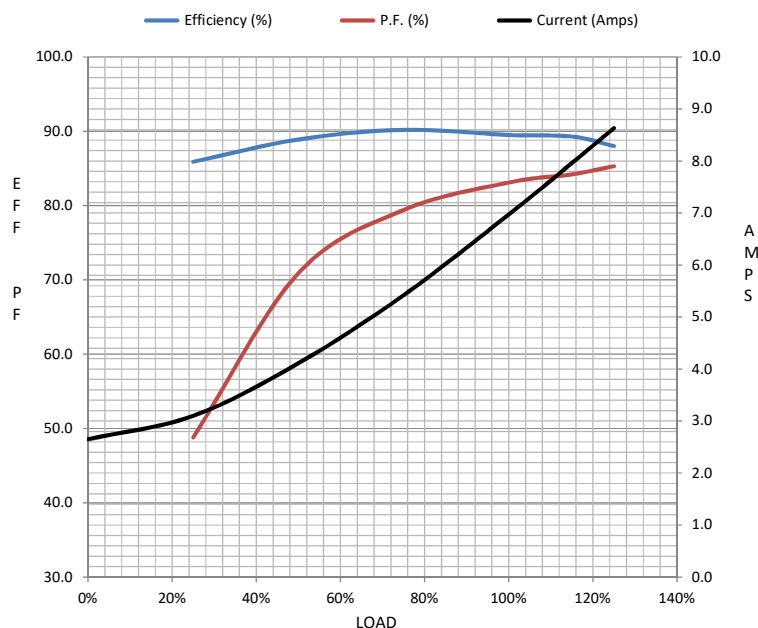
Load	0%	25%	50%	75%	100%	115%	125%	LR	
Current (Amps)	2.65	3.1	4.1	5.4	7.0	8.0	8.6	54.2	
Torque (ft-lb)	0.00	3.7	7.4	11.1	15.0	17.4	18.8	30.1	
RPM	1800	1790	1779	1768	1760	1,747	1742	0	
Efficiency (%)		85.9	88.9	90.2	89.5	89.3	88.0		
P.F. (%)	6.8	48.8	70.9	79.4	83.1	84.2	85.3	0.0	

## Motor Speed Data

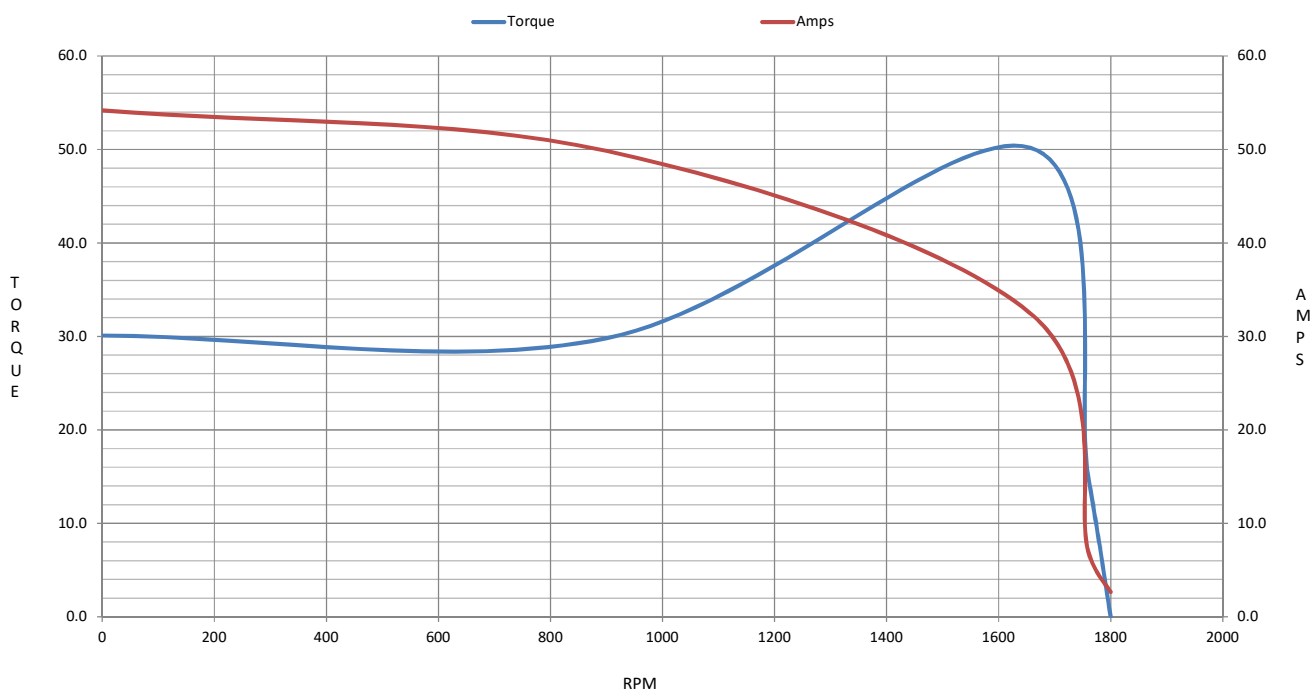
	LR	Pull-Up	BD	Rated	Idle
Speed (RPM)	0	900	1656	1760	1800
Current (Amps)	54.2	49.8	32.5	7.0	2.65
Torque (ft-lb)	30.1	29.8	50.2	15.0	0.00

## Information Block

HP	5.0			
Sync. RPM	1800			
Frame	184			
Enclosure	TEFC			
Construction	TFW			
Voltage	208/416	V		
Frequency	60	Hz		
Design	B			
LR Code letter	J			
Service Factor	1.15			
Temp Rise @ FL	65	° C		
Duty	CONT			
Ambient	40	° C		
Elevation	1,000	feet		
Rotor/Shaft wk²	0.49	Lb-Ft²		
Ref Wdg	T84170 FR			
Sound Pressure @ 1M	55	dBa		
VFD Rating	NONE			
Outline Dwg	035536-950			
Conn. Diag	005010.01			
Additional Specifications:				
0				
0				
EQUIV CKT (OHMS / PHASE)				
R1	R2	X1	X2	Xm
0.0000	0.0000	0.0000	0.0000	0.0000



## Speed - Torque Curve



## EC Declaration of Conformity

The undersigned representing  
the manufacturer:

Regal Beloit America  
100 East Randolph St.  
Wausau, WI 54401

and the authorized representative  
established within the Community:

Marathon Electric UK  
6F Thistleton Road Ind. Estate  
Market Overton  
Oakham, Rutland LE15 7PP UK

are committed to providing customers with products that comply with applicable regulations and international protocols to which they are subject, including the requirements of the European Parliament Directive on the Harmonization of the laws relating to electrical equipment designed for use within certain voltage limits (2014/35/EU).

Regal Beloit America declares that the following product(s), to which this declaration relates, are in conformity with the relevant sections of the EC standards listed below.

This statement supersedes any statements previously issued pertaining to the product(s) listed below and is subject to change without notice.

Model No : 132466.00

(Model No. may contain prefix and/or suffix characters)

Catalog No : 132466.00

Rework No : N/A

Directives :

Low Voltage Directive 2014/35/EU

Harmonized Standards Used :

EN 60034-1: 2010 (IEC 60034-1: 2010)

EN 60034-5: 2001/A1:2007 (IEC 60034-5: 2000/A1:2006)

Authorized Representative:



Michael A. Logsdon  
Vice President, Technology

Authorized Representative in the Community:



Julian Clark  
Marketing Engineer

Created on 09/01/2022

**CE 22**