

PRODUCT INFORMATION PACKET



Model No: 132438.00

Catalog No: 132438.00

132438.00..3HP..1740RPM.184TC.TENV.115/208-230V.1PH.60HZ.15 MIN.40C.1.0SF.ROUND.....

Regal and Leeson are trademarks of Regal Rexnord Corporation or one of its affiliated companies.

©2023 Regal Rexnord Corporation, All Rights Reserved. MC017097E





Nameplate Specifications

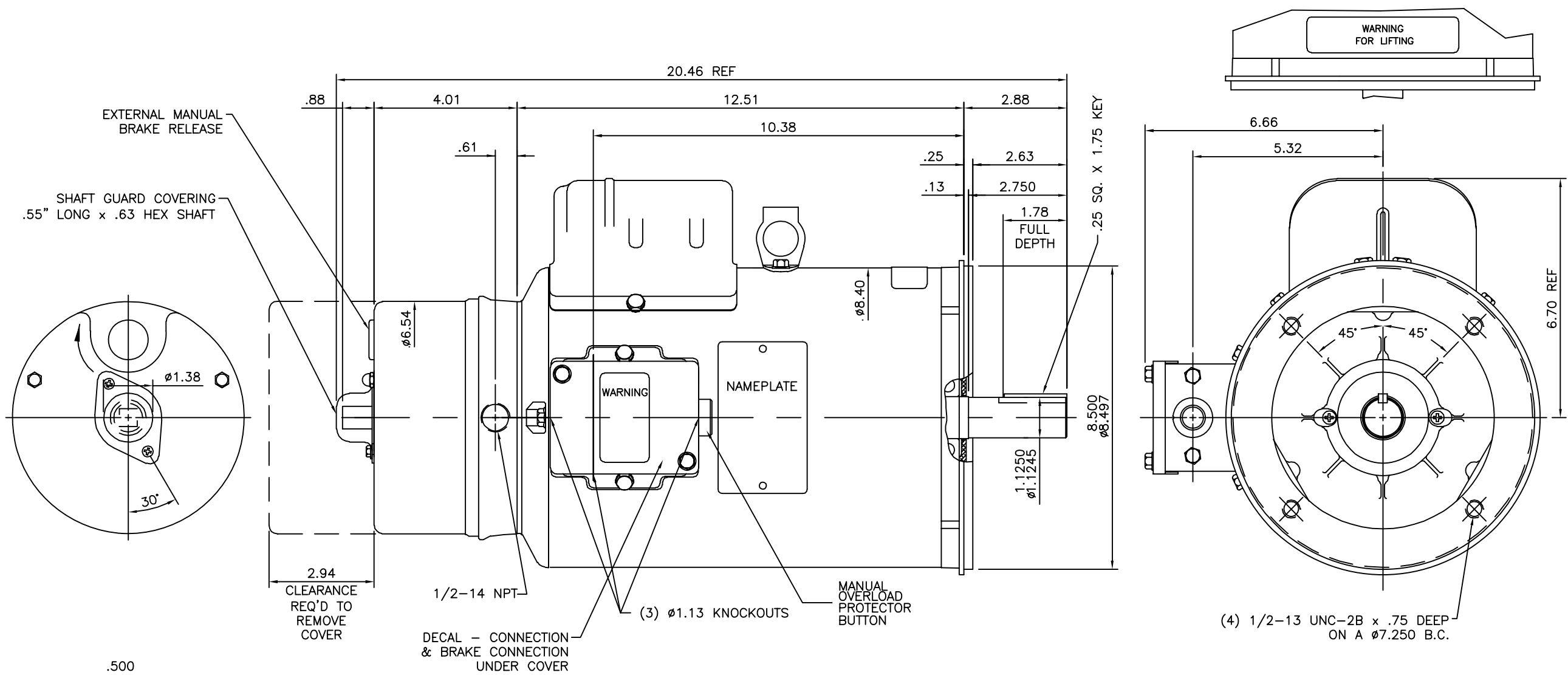
Output HP	3 Hp	Output KW	2.2 kW
Frequency	60 Hz	Voltage	115/208-230 V
Current	33.5/18.0-16.8 A	Speed	1740 rpm
Service Factor	1	Phase	1
Efficiency	76.2 %	Power Factor	75.6
Duty	15 Minute	Insulation Class	F
Design Code	L	KVA Code	J
Frame	184TC	Enclosure	Totally Enclosed Non Ventilated
Thermal Protection	Manual	Ambient Temperature	40 °C
Drive End Bearing Size	6206	Opp Drive End Bearing Size	6205
UL	Recognized	CSA	Y
CE	N	IP Code	43
Number of Speeds	1		

Technical Specifications

Electrical Type	Capacitor Start Induction Run	Starting Method	Across The Line
Poles	4	Rotation	Selective Counterclockwise
Mounting	Round	Motor Orientation	Horizontal
Drive End Bearing	Ball	Opp Drive End Bearing	Ball
Frame Material	Rolled Steel	Shaft Type	T
Assembly/Box Mounting	F1 ONLY		
Connection Drawing	005067.02	Outline Drawing	036142-1100

This is an uncontrolled document once printed or downloaded and is subject to change without notice. Date Created:03/30/2023


036142



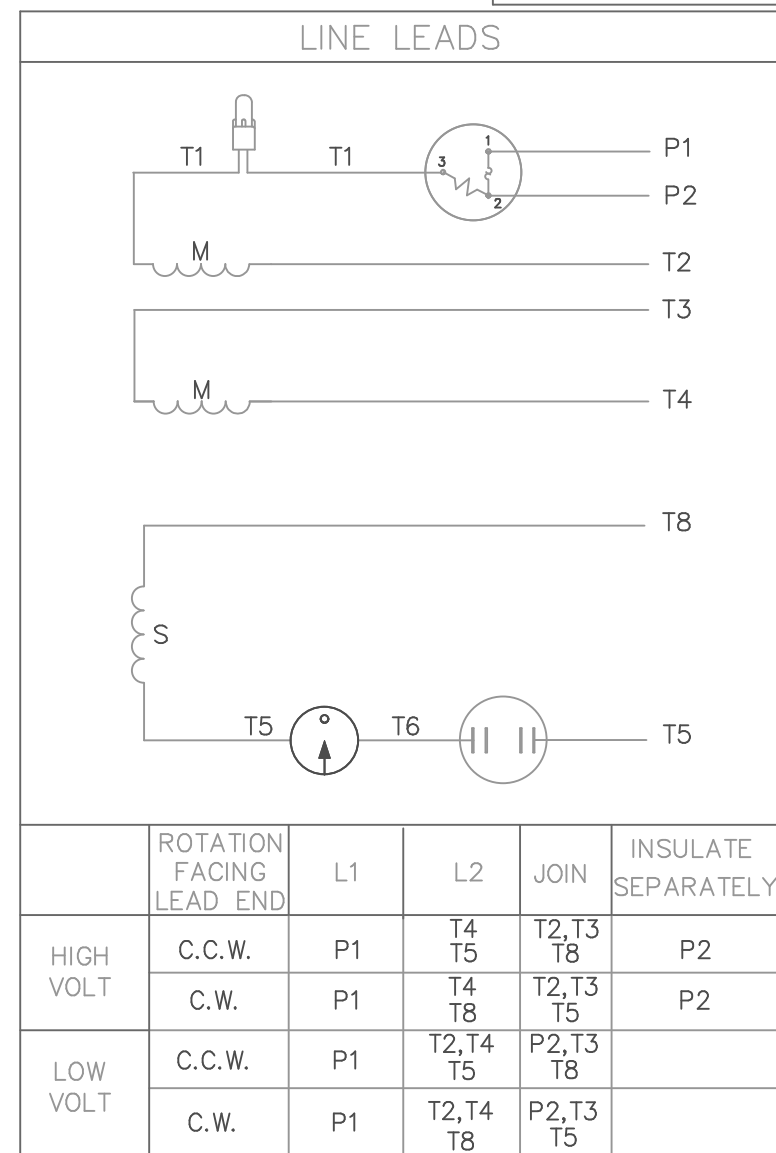
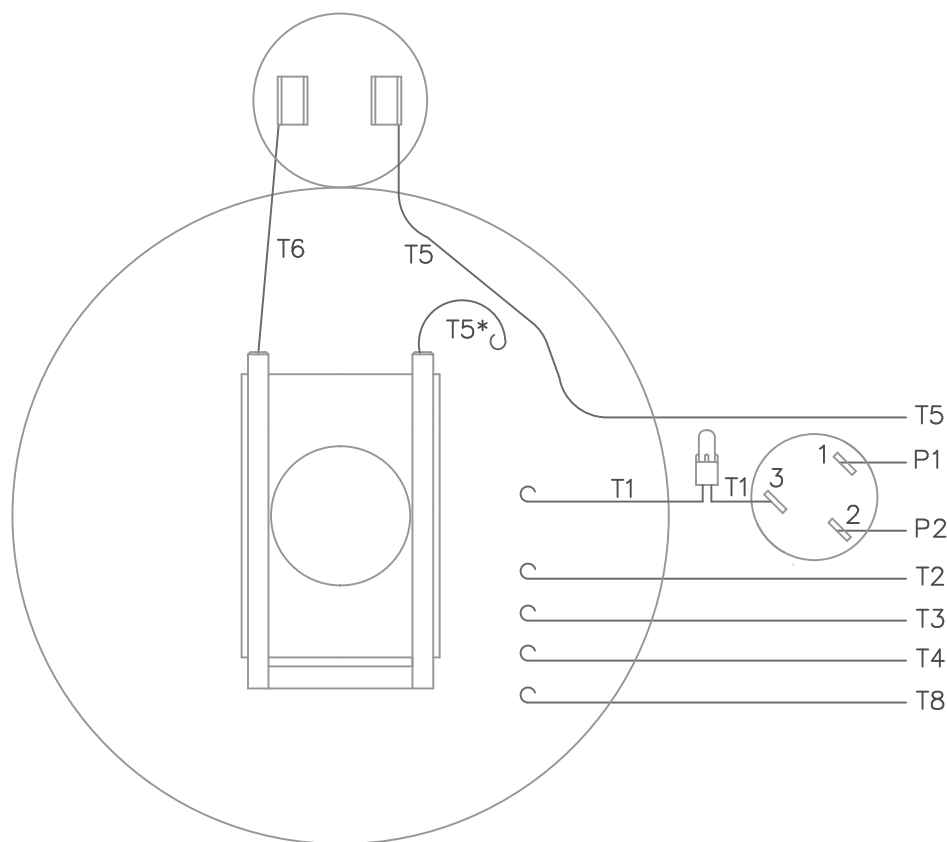
MAXIMUM FACE RUNOUT TO BE .004 T.I.R.
MAXIMUM PILOT ECCENTRICITY TO BE .004 T.I.R.
PERMISSIBLE SHAFT RUNOUT TO BE .002 T.I.R.

GASKETS THROUGHOUT


ODE SHAFT SQUARE EXTENSION DETAIL
SCALE: FULL

				TOLERANCES UNLESS SPECIFIED		 ELECTRIC MOTORS GEARMOTORS AND DRIVES	DRAWN SAJ 06/01/15	
				DEC.	INCHES		CHK SR 06/01/15	
				.X	±.1		APPD SR 06/01/15	
				.XX	±.03		SCALE 1=2	
				.XXX	±.005	TITLE OUTLINE - 180TC FRAME T.E.N.V. - "C" FACE - BRAKE	REF OLPR145942	
A	NEW DRAWING	SAJ 06/01/15	SR	.XXXX	±.0005		FMF	
NO.	REVISION	BY & DATE	CHK	ANG	±1/2"	FINISH	DIAMOND DOORS	PREV
THIS DRAWING IN DESIGN AND DETAIL IS OUR PROPERTY AND MUST NOT BE USED EXCEPT IN CONNECTION WITH OUR WORK ALL RIGHTS OF DESIGN AND INVENTION ARE RESERVED THIS IS AN ELECTRONICALLY GENERATED DOCUMENT - DO NOT SCALE THIS PRINT				RFP	CAD FILE	036142	SIZE B	DRAWING NO. 036142
				DIST				REV. A

VIEW FROM OUTSIDE OF MOTOR AT SWITCH END.



* THIS LEAD MAY BE WHITE

				TOLERANCES UNLESS SPECIFIED				ELECTRIC MOTORS GEARMOTORS AND DRIVES		DRAWN WLW 09/01/76		
				DEC.	INCHES					CHK		
05	ALTERNATE T5 LEAD MARKING WAS RED	RLW	8/6/02		.X	±.1	TITLE EXT. WIRING DIAGRAM TYPE "C" W/ PROTECTOR		APPD			
04	ADDED ALTERNATE T5 LEAD MARKING	RLW	5/31/02	KH	.XX	±.01			SCALE		1=1	
03	DECAL WAS 004015	DBT	12/23/97		.XXX	±.005			REF			
02	REDRAWN ON CAD	DBT	05/29/97		.XXXX	±.0005	MAT'L. DECAL - 004011		FMF			
NO.	REVISION	BY & DATE	CHK	ANG	±1/2"	FINISH		PREV				
THIS DRAWING IN DESIGN AND DETAIL IS OUR PROPERTY AND MUST NOT BE USED EXCEPT IN CONNECTION WITH OUR WORK ALL RIGHTS OF DESIGN AND INVENTION ARE RESERVED THIS IS AN ELECTRONICALLY GENERATED DOCUMENT - DO NOT SCALE THIS PRINT				RFP		CAD FILE 00506702		SIZE	DRAWING NO.		REV.	
				DIST NLV				A	005067-02		05	