

PRODUCT INFORMATION PACKET

Model No: 132413.00

Catalog No: 132413.00

..7.5HP..3600 RPM.184J.DP. 230/460.3PH.60HZ.CONT.40C.1.15SF.....

Regal and are trademarks of Regal Rexnord Corporation or one of its affiliated companies.
©2022 Regal Rexnord Corporation, All Rights Reserved. MC017097E

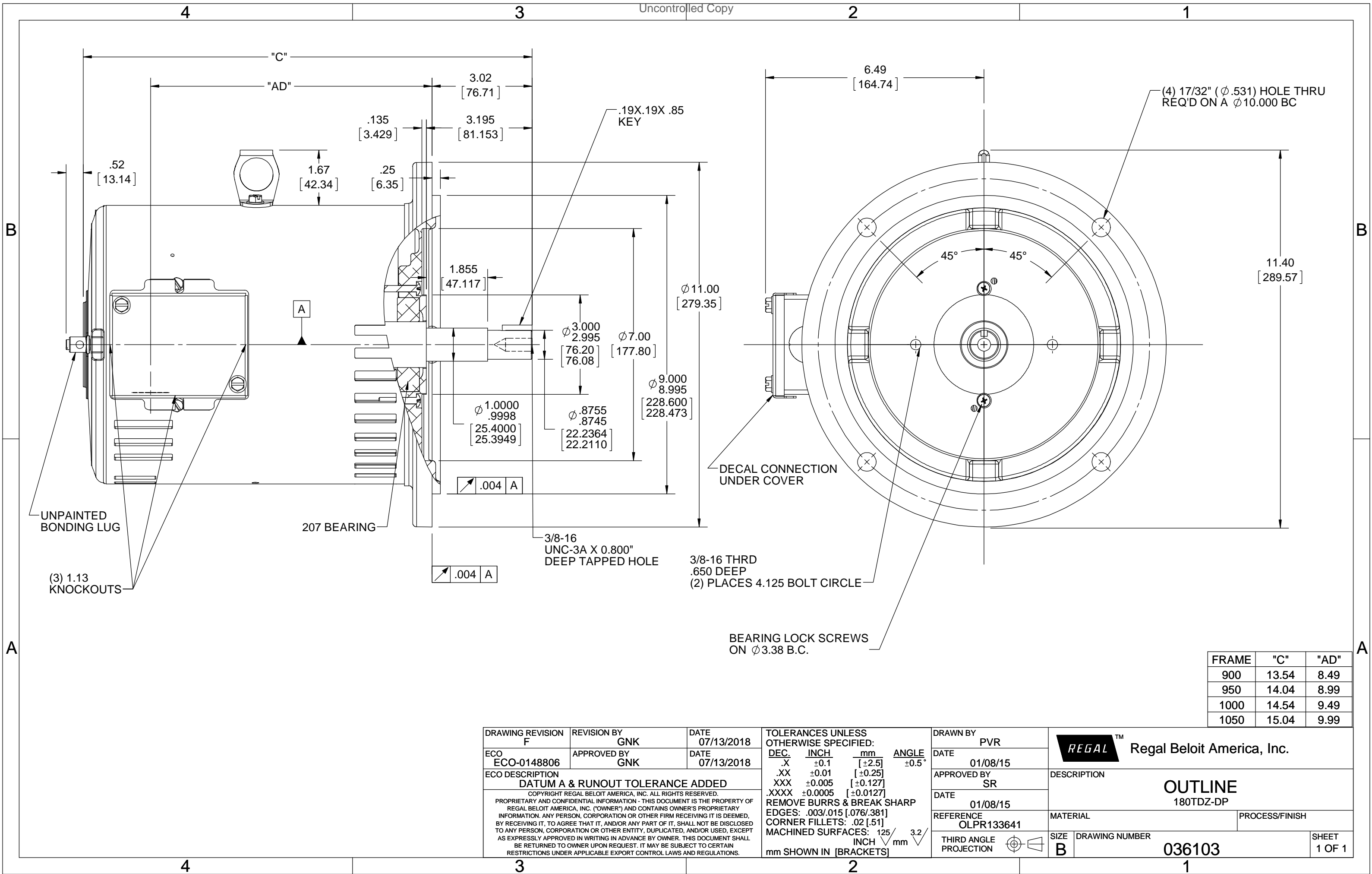


Nameplate Specifications

Technical Specifications

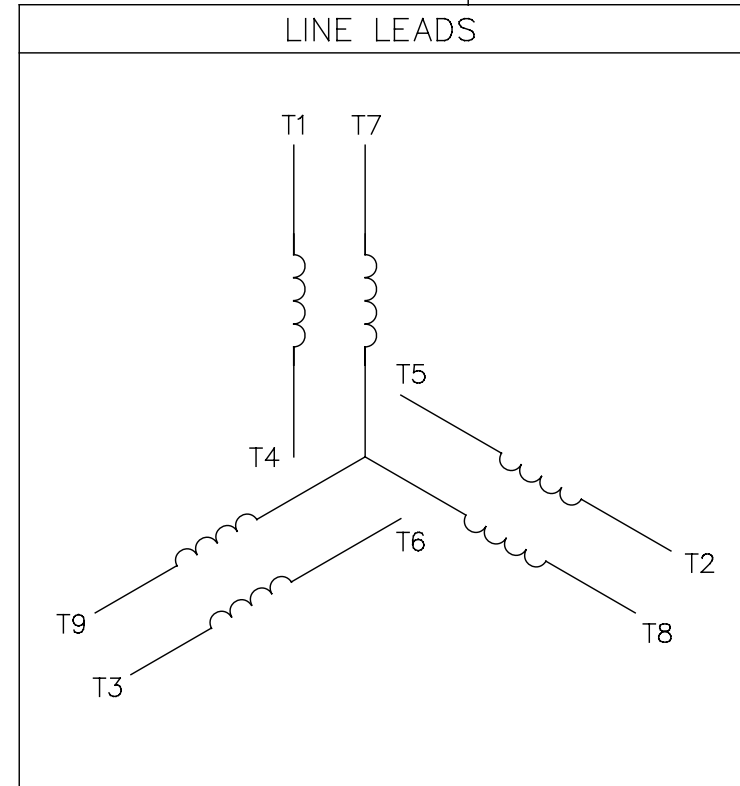
Outline Drawing	036103-1000	Connection Drawing	005010.01
-----------------	-------------	--------------------	-----------

This is an uncontrolled document once printed or downloaded and is subject to change without notice. Date Created:09/14/2022




005010-01

VIEW FROM OUTSIDE OF MOTOR AT SWITCH END.



VOLTAGE	L1	L2	L3	JOIN & INSULATE
HIGH	T1	T2	T3	(T4,T7) (T5,T8) (T6,T9)
LOW	T1,T7	T2,T8	T3,T9	T4,T5,T6

				TOLERANCES UNLESS SPECIFIED		 Regal Beloit America, Inc.	DRAWN RDW 04/12/02		
				DEC.	INCHES		CHK		
				.X	±.1		APPD		
				.XX	±.01		SCALE 1=1		
				.XXX	±.005	TITLE EXTERNAL WIRING DIAGRAM 3 PHASE W/O PROTECTOR	REF FIG.2-51		
A	UPDATED TO REGAL LOGO	SAJ 06/26/15	AJY	.XXXX	±.0005		MAT'L. DECAL - 004014	FMF	
NO.	REVISION	BY & DATE	CHK	ANG	±1/2"	FINISH	PREV		
THIS DRAWING IN DESIGN AND DETAIL IS OUR PROPERTY AND MUST NOT BE USED EXCEPT IN CONNECTION WITH OUR WORK ALL RIGHTS OF DESIGN AND INVENTION ARE RESERVED THIS IS AN ELECTRONICALLY GENERATED DOCUMENT - DO NOT SCALE THIS PRINT			RFP 04/12/02		CAD FILE 00501001		SIZE	DRAWING NO.	REV.
			DIST BRF-NLV				A	005010-01	A