

PRODUCT INFORMATION PACKET



Model No: 132407.00

Catalog No: 132407.00

FRAME/STATOR ASSEMBLY.....184TZ.TENV..3PH..CONT.40C..PARTIAL MOTOR.....

Regal and Leeson are trademarks of Regal Rexnord Corporation or one of its affiliated companies.
©2024 Regal Rexnord Corporation, All Rights Reserved. MC017097E





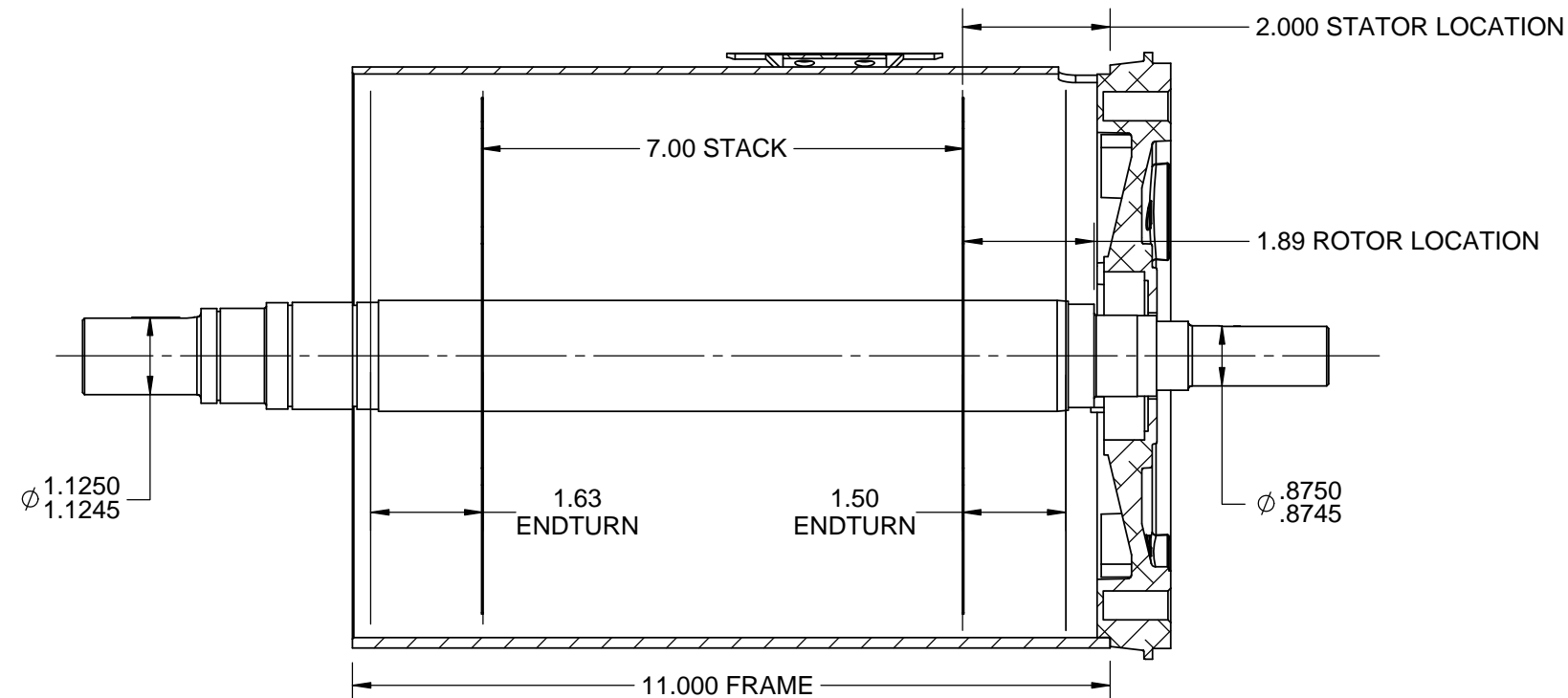
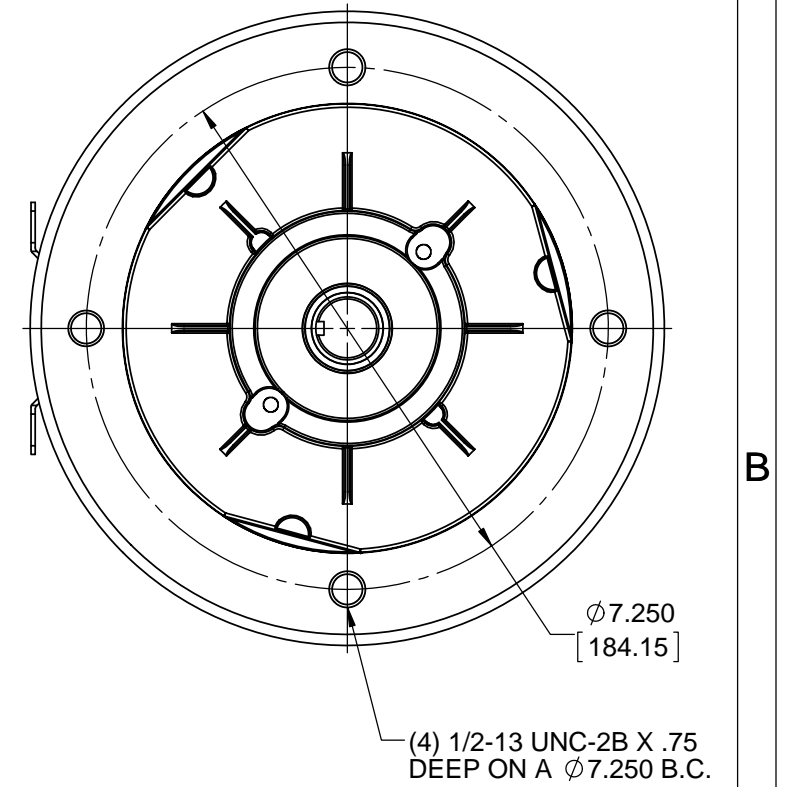
Nameplate Specifications

Output HP	0 Hp	Voltage	- V
Service Factor	1	Frame	184TZ
Enclosure	Totally Enclosed Non Ventilated	Thermal Protection	No Protection
Ambient Temperature	40 °C	Frequency	60 Hz
Current	No Voltage A	Duty	Continuous
Insulation Class	F	Design Code	NO DESIGN CODE
KVA Code	E	Drive End Bearing Size	NONE
Opp Drive End Bearing Size	NONE	UL	No
CSA	N	CE	N
IP Code	43	Number of Speeds	1

Technical Specifications

Electrical Type	Squirrel Cage Induction Run	Starting Method	Across The Line
Rotation	Reversible	Mounting	PARTIAL MOTOR
Motor Orientation	Horizontal	Drive End Bearing	Ball
Opp Drive End Bearing	Ball	Frame Material	Aluminum
Shaft Type	Single Special Extension	Assembly/Box Mounting	F1 ONLY
Outline Drawing	OL132407	Connection Drawing	NONE

This is an uncontrolled document once printed or downloaded and is subject to change without notice. Date Created:09/07/2024



001

DRAWING REVISION B	REVISION BY AS	DATE 01/25/2017
ECO ECO-0116954	APPROVED BY JD	DATE 01/25/2017
ECO DESCRIPTION UPDATED STATOR & ENDTURN LOCATION		
<p>COPYRIGHT REGAL BELOIT AMERICA, INC. ALL RIGHTS RESERVED.</p> <p>PROPRIETARY AND CONFIDENTIAL INFORMATION - THIS DOCUMENT IS THE PROPERTY OF REGAL BELOIT AMERICA, INC. ("OWNER") AND CONTAINS OWNER'S PROPRIETARY INFORMATION. ANY PERSON, CORPORATION OR OTHER FIRM RECEIVING IT IS DEEMED, BY RECEIVING IT, TO AGREE THAT IT, AND/OR ANY PART OF IT, SHALL NOT BE DISCLOSED TO ANY PERSON, CORPORATION OR OTHER ENTITY, DUPLICATED, AND/OR USED, EXCEPT AS EXPRESSLY APPROVED IN WRITING IN ADVANCE BY OWNER. THIS DOCUMENT SHALL BE RETURNED TO OWNER UPON REQUEST. IT MAY BE SUBJECT TO CERTAIN RESTRICTIONS UNDER APPLICABLE EXPORT CONTROL LAWS AND REGULATIONS.</p>		

TOLERANCES UNLESS OTHERWISE SPECIFIED:


<u>DEC.</u>	<u>INCH</u>	<u>mm</u>	<u>ANGLE</u>
.X	±0.1	[±2.5]	±0.5°
.XX	±0.01	[±0.25]	
.XXX	±0.005	[±0.127]	
.XXXX	±0.0005	[±0.0127]	

REMOVE BURRS & BREAK SHARP EDGES: .003/.015 [.076/.381]

CORNER FILLETS: .02 [.51]

MACHINED SURFACES: $\sqrt[125]{\text{INCH}}$ $\sqrt[3.2]{\text{mm}}$

mm SHOWN IN [BRACKETS]

DRAWN BY	JAH
DATE	11/10/2014
APPROVED BY	GR
DATE	11/10/2014
REFERENCE	OLPR143169
THIRD ANGLE PROJECTION	

 Regal TM		Regal Beloit America, Inc.	
DESCRIPTION		MOTOR ASSY 180 FRAME - PARTIAL	
MATERIAL		PROCESS/FINISH	
SIZE B	DRAWING NUMBER OL132407		SHEET 1 OF 1