

# PRODUCT INFORMATION PACKET

Model No: 132369.00

Catalog No: 132369.00

..7 1/2HP..1800RPM.184T.TEAO.460V.3PH.60HZ.CONT AOM.40C.1.0SF.....

Regal and are trademarks of Regal Rexnord Corporation or one of its affiliated companies.  
©2022 Regal Rexnord Corporation, All Rights Reserved. MC017097E



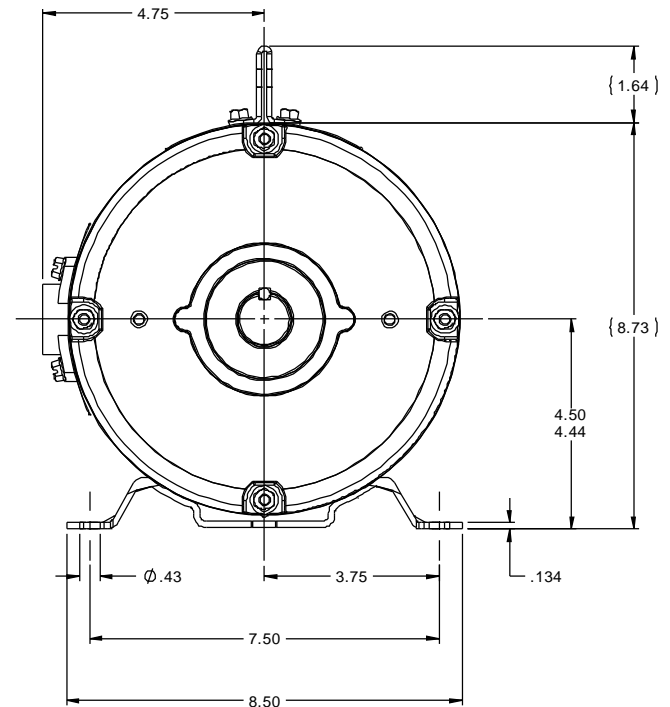
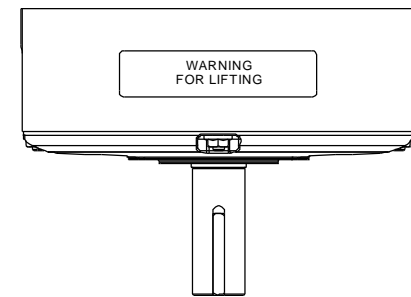
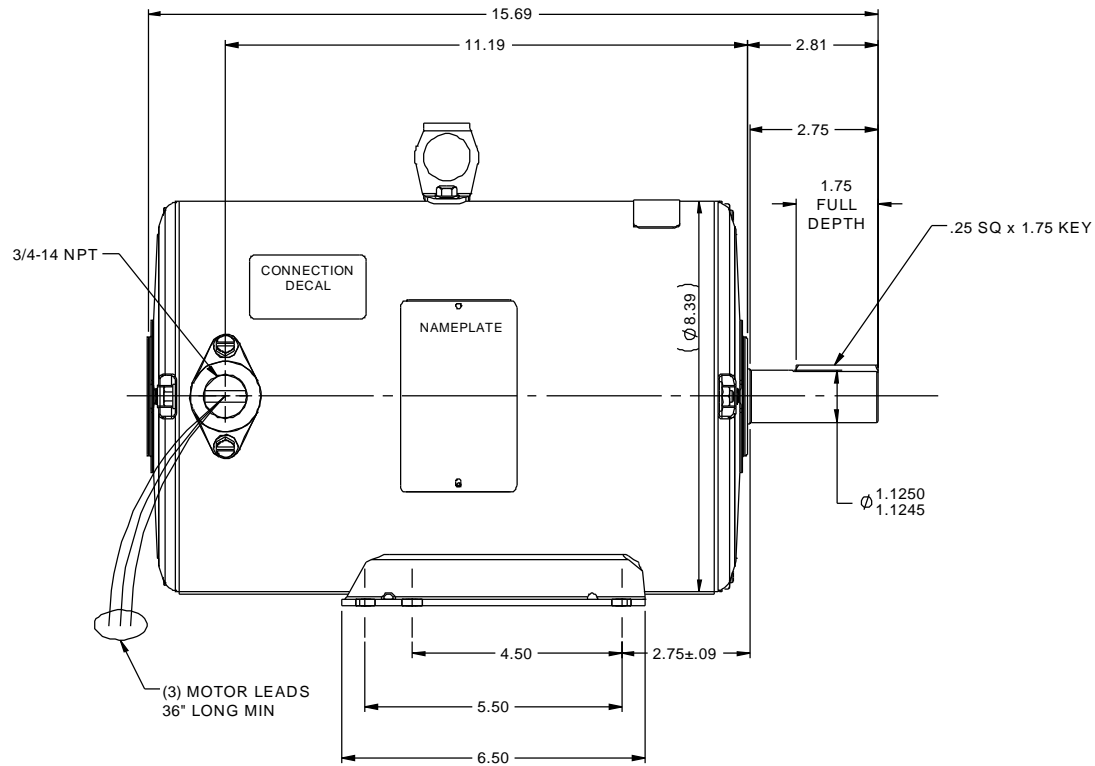
**Nameplate Specifications**

|                        |                      |                            |  |
|------------------------|----------------------|----------------------------|--|
| Output HP              | <b>7.50 Hp</b>       | Output KW                  | <b>5.6 kW</b>                          |
| Frequency              | <b>60 Hz</b>         | Voltage                    | <b>460 V</b>                           |
| Current                | <b>10.5 A</b>        | Speed                      | <b>1760 rpm</b>                        |
| Service Factor         | <b>1</b>             | Phase                      | <b>3</b>                               |
| Efficiency             | <b>89.5 %</b>        | Power Factor               | <b>81.7</b>                            |
| Duty                   | <b>Air Over</b>      | Insulation Class           | <b>F</b>                               |
| Design Code            | <b>B</b>             | KVA Code                   | <b>K</b>                               |
| Frame                  | <b>184T</b>          | Enclosure                  | <b>Totally Enclosed Non Ventilated</b> |
| Thermal Protection     | <b>No Protection</b> | Ambient Temperature        | <b>40 °C</b>                           |
| Drive End Bearing Size | <b>6206</b>          | Opp Drive End Bearing Size | <b>6205</b>                            |
| UL                     | <b>Recognized</b>    | CSA                        | <b>Y</b>                               |
| CE                     | <b>N</b>             | IP Code                    | <b>43</b>                              |
| Number of Speeds       | <b>1</b>             |                            |  |

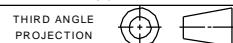
**Technical Specifications**

|                       |                                    |                    |                        |
|-----------------------|------------------------------------|--------------------|------------------------|
| Electrical Type       | <b>Squirrel Cage Induction Run</b> | Starting Method    | <b>Across The Line</b> |
| Poles                 | <b>4</b>                           | Rotation           | <b>Reversible</b>      |
| Resistance Main       | <b>1.72 Ohms</b>                   | Mounting           | <b>Rigid Base</b>      |
| Motor Orientation     | <b>Horizontal</b>                  | Drive End Bearing  | <b>Ball</b>            |
| Opp Drive End Bearing | <b>Ball</b>                        | Frame Material     | <b>Rolled Steel</b>    |
| Shaft Type            | <b>T</b>                           | Shaft Diameter     | <b>1.125 in</b>        |
| Assembly/Box Mounting | <b>F1/F2 CAPABLE</b>               |                    |                        |
| Outline Drawing       | <b>036024-1150</b>                 | Connection Drawing | <b>005102.01</b>       |

This is an uncontrolled document once printed or downloaded and is subject to change without notice. Date Created:11/10/2022

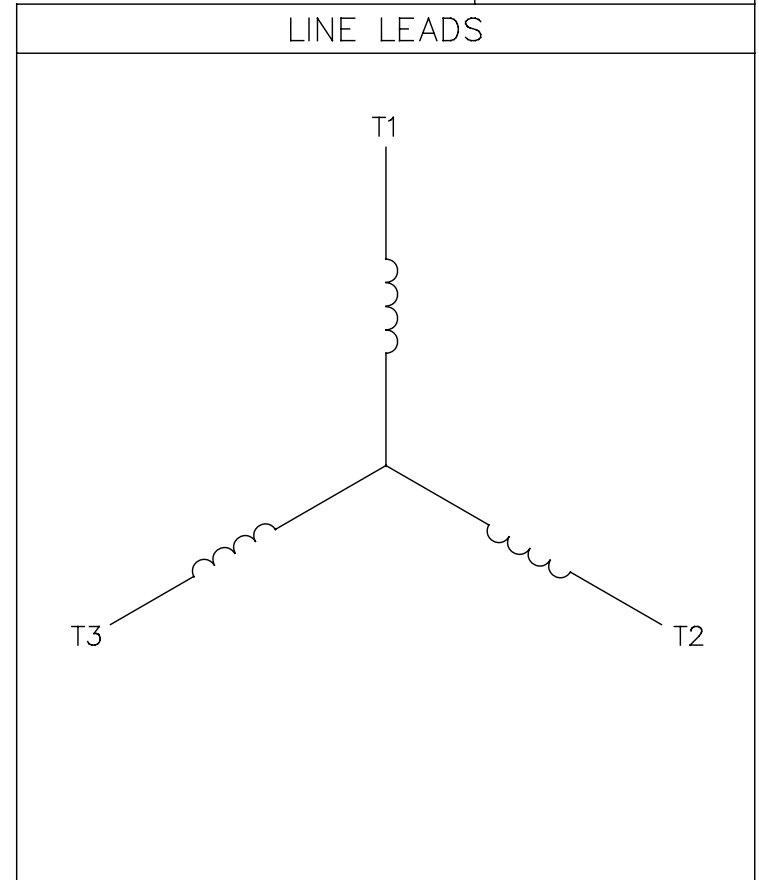
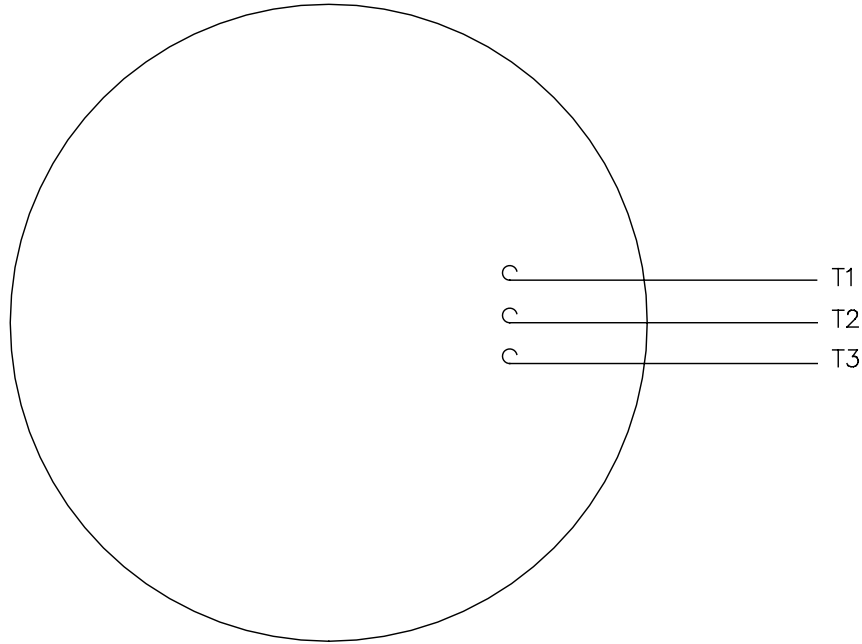


| TOLERANCES UNLESS SPECIFIED |          | DEC       | INCHES         | TITLE                    | ELECTRIC MOTORS<br>GEARMOTORS<br>AND DRIVES | DRAWN PVR 10/22/13 |
|-----------------------------|----------|-----------|----------------|--------------------------|---|--------------------|
| X                           | ±.1      |           |                |                          |   |                    |
| XX                          | ±.03     |           |                | TENV - RIGID             | SCALE 3:8                                   | REF OLPR125241     |
| XXX                         | ±.005    |           |                | MAT'L                    | FMF 132369.00                               | PAGE OF            |
| XXXX                        | ±.0005   |           |                | FINISH                   | PREV  | REV                |
| NO                          | REVISION | BY & DATE | CHK LANG ±1/2° | NETWORK FILE NAME 036024 | SIZE B                                      | DRAWING NO 036024  |



005102-01

VIEW FROM OUTSIDE OF MOTOR AT SWITCH END.



CONNECT LEADS AS FOLLOWS  
FOR FOUR CONDUCTOR CORD ( )

|       |             |               |               |         |
|-------|-------------|---------------|---------------|---------|
| CORD  | L1<br>(RED) | L2<br>(WHITE) | L3<br>(BLACK) | (GREEN) |
| MOTOR | T1          | T2            | T3            | GROUND  |

|  |                                    |              |     |                                |        |  |                   |           |                       |         |             |  |
|--|------------------------------------|--------------|-----|--------------------------------|--------|--|-------------------|-----------|-----------------------|---------|-------------|--|
|  |                                    |              |     | TOLERANCES<br>UNLESS SPECIFIED |        | <b>Regal Beloit America, Inc.</b>                          |                   |           | DRAWN JRW 9/11/75     |         |             |  |
|  |                                    |              |     | DEC.                           | INCHES |  |                   |           | CHK                   |         |             |  |
|  |                                    |              |     | .X                             | ±.1    | APPD JCW 9/11/75   |                   | SCALE 1=1 |                       |         |             |  |
| 08   | UPDATED TO REGAL LOGO              | SAJ 06/26/15 | AJY | .XX                            | ±.01   | TITLE<br>EXTERNAL WIRING DIAGRAM<br>TYPE "T" W/O PROTECTOR |                   |           | REF W-T6343-6         |         |             |  |
| 07   | UPDATED TO CURRENT STANDARDS       | DBT 5/30/97  |     | .XXX                           | ±.005  |  |                   |           | MAT'L. DECAL - 004169 |         | FMF 6T17FB7 |  |
| 06   | REDRAWN ON CAD; ADDED DECAL NUMBER | SAW 1/24/95  |     | .XXXX                          | ±.0005 |  |                   |           | FINISH                |         | PREV        |  |
| NO.  | REVISION                           | BY & DATE    | CHK | ANG                            | ±1/2"  | RFP 5/1/02   | CAD FILE 00510201 | SIZE A    | DRAWING NO. 005102-01 | REV. 08 |             |  |
| THIS DRAWING IN DESIGN AND DETAIL IS OUR PROPERTY AND MUST NOT BE USED EXCEPT IN CONNECTION WITH OUR WORK ALL RIGHTS OF DESIGN AND INVENTION ARE RESERVED THIS IS AN ELECTRONICALLY GENERATED DOCUMENT - DO NOT SCALE THIS PRINT |                                    |              |     |                                |        | DIST BRF-NLV   |                   |           |                       |         |             |  |