

PRODUCT INFORMATION PACKET



Model No: 132268.00
Catalog No: 132268.00
5 HP Washdown Motor, 3 phase, 1800 RPM, 575 V, 184T Frame, TEFC
General Purpose Motors



Regal and Leeson are trademarks of Regal Rexnord Corporation or one of its affiliated companies.
©2021 Regal Rexnord Corporation, All Rights Reserved. MC017097E





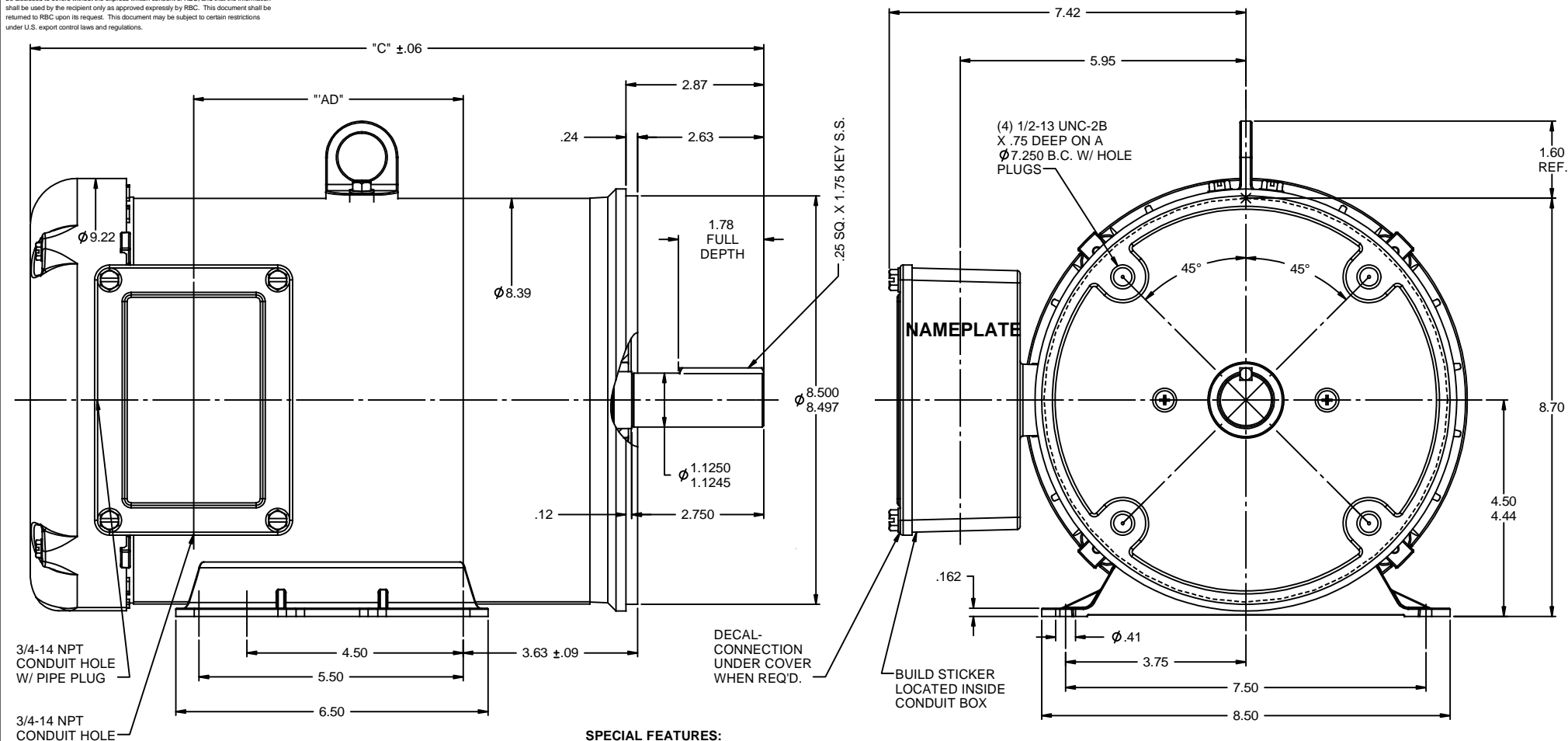
Nameplate Specifications

Output HP	5 Hp	Output KW	3.7 kW
Frequency	60 Hz	Voltage	575 V
Current	5.0 A	Speed	1760 rpm
Service Factor	1.15	Phase	3
Efficiency	89.5 %	Power Factor	83
Duty	Continuous	Insulation Class	F
Design Code	B	KVA Code	J
Frame	184TC	Enclosure	Totally Enclosed Fan Cooled
Thermal Protection	No	Ambient Temperature	40 °C
Drive End Bearing Size	6207	Opp Drive End Bearing Size	6207
UL	Recognized	CSA	Y
CE	Y	IP Code	55
Number of Speeds	1		

Technical Specifications

Electrical Type	Squirrel Cage Induction Run	Starting Method	Across The Line
Poles	4	Rotation	Reversible
Resistance Main	0 Ohms	Mounting	Rigid Base
Motor Orientation	Horizontal	Drive End Bearing	Ball
Opp Drive End Bearing	Ball	Frame Material	Rolled Steel
Shaft Type	T	Assembly/Box Mounting	F1 ONLY
Outline Drawing	035437-1000	Connection Drawing	005102.01

This is an uncontrolled document once printed or downloaded and is subject to change without notice. Date Created:10/07/2021

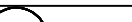



SPECIAL FEATURES:

SPECIAL FEATURES:
DOUBLE LIP OIL SEAL BOTH ENDS
GASKETS THROUGHOUT
O-RING SEALED ENDBELLS & THRU BOLTS
LOCKED BEARING W/ SEALED LOCK SCREWS

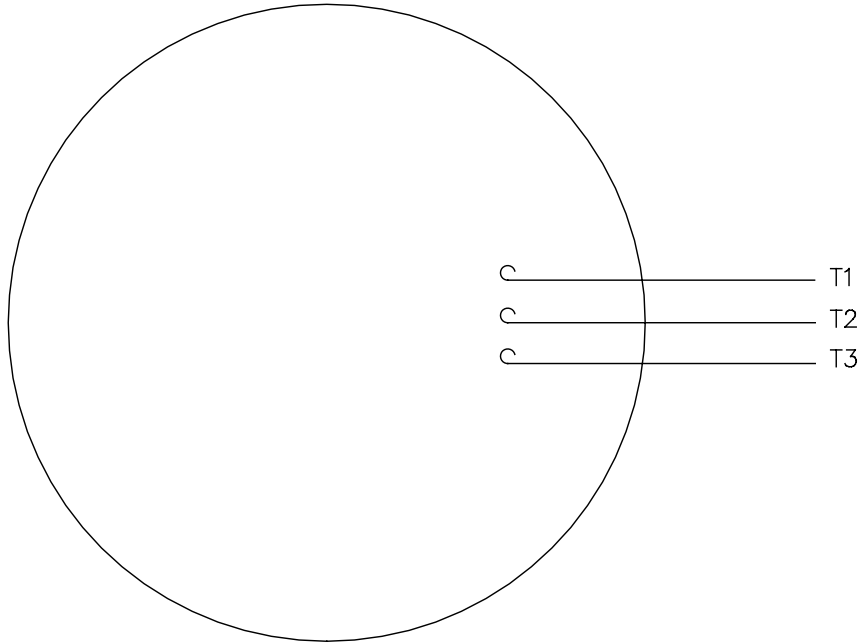
MAXIMUM FACE RUNOUT TO BE .004 T.I.R.
MAXIMUM PILOT ECCENTRICITY TO BE .004 T.I.R.
PERMISSIBLE SHAFT RUNOUT TO BE .002 T.I.R.

DASH NO.	"C"	"AD"
850	14.27	4.61
900	14.77	5.11
950	15.27	5.61
1000	15.77	6.11

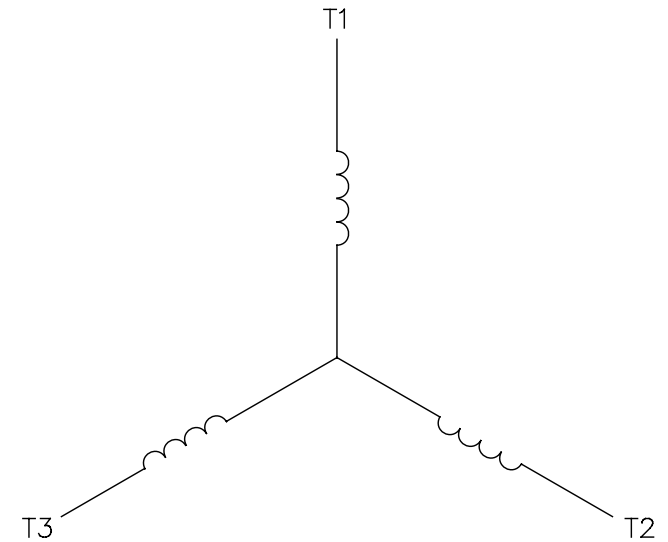
				TOLERANCES UNLESS SPECIFIED		 REGAL-BELOIT CORPORATION		DRAWN JJK 4/4/02	
				DEC	INCHES			CHK	
				X	±.1			APPR	
02	ADDED DASH NO. 1000 (132208.00)	PG 9/21/2010		XX	±.03	TITLE OUTLINE - 180TC FRAME		SCALE 1:2	
01	ADDED NOTE FOR BUILD STICKER LOC. PER ISAAC 10-1677	PG 5/4/2010		XXX	±.005	TEFC - RIGID "C"		REF OLG131167	
UPDATED & REDRAWN TO SOLIDWORKS		LST 12/11/2009		XXXX	±.0005	MATL STAINLESS STEEL DUCK		RFM G131901.00	
NO	REVISION	BY & DATE	CHK	ANG	±1/2°	FINISH		PAGE	OF
THIRD ANGLE PROJECTION 			RFP	PREV			SIZE B	DRAWING NO 035437	REV 02
			NETWORK FILE NAME 035437						

005102-01


VIEW FROM OUTSIDE OF MOTOR AT SWITCH END.



LINE LEADS

CONNECT LEADS AS FOLLOWS
FOR FOUR CONDUCTOR CORD ()

CORD	L1 (RED)	L2 (WHITE)	L3 (BLACK)	(GREEN)
MOTOR	T1	T2	T3	GROUND

				TOLERANCES UNLESS SPECIFIED		 Regal Beloit America, Inc.	DRAWN JRW 9/11/75		
				DEC.	INCHES		CHK		
				.X	±.1		APPD JCW 9/11/75		
08	UPDATED TO REGAL LOGO	SAJ 06/26/15	AJY	.XX	±.01	TITLE EXTERNAL WIRING DIAGRAM TYPE "T" W/O PROTECTOR			SCALE 1=1
07	UPDATED TO CURRENT STANDARDS	DBT 5/30/97		.XXX	±.005				REF W-T6343-6
06	REDRAWN ON CAD; ADDED DECAL NUMBER	SAW 1/24/95		.XXXX	±.0005	MAT'L. DECAL - 004169			FMF 6T17FB7
NO.	REVISION	BY & DATE	CHK	ANG	±1/2"	FINISH			PREV
THIS DRAWING IN DESIGN AND DETAIL IS OUR PROPERTY AND MUST NOT BE USED EXCEPT IN CONNECTION WITH OUR WORK ALL RIGHTS OF DESIGN AND INVENTION ARE RESERVED THIS IS AN ELECTRONICALLY GENERATED DOCUMENT - DO NOT SCALE THIS PRINT			RFP 5/1/02		CAD FILE 00510201		SIZE A	DRAWING NO. 005102-01	REV. 08
			DIST BRF-NLV						