

# PRODUCT INFORMATION PACKET



Model No: 132244.00

Catalog No: 132244.00

WATTSaver® General Purpose Motor, 7.50 & 7.50 HP, 3 Ph, 60 & 50 Hz, 230/460 & 200/400 V,  
3600 & 3000 RPM, 184TC Frame, DP



Regal and Leeson are trademarks of Regal Rexnord Corporation or one of its affiliated companies.

©2023 Regal Rexnord Corporation, All Rights Reserved. MC017097E



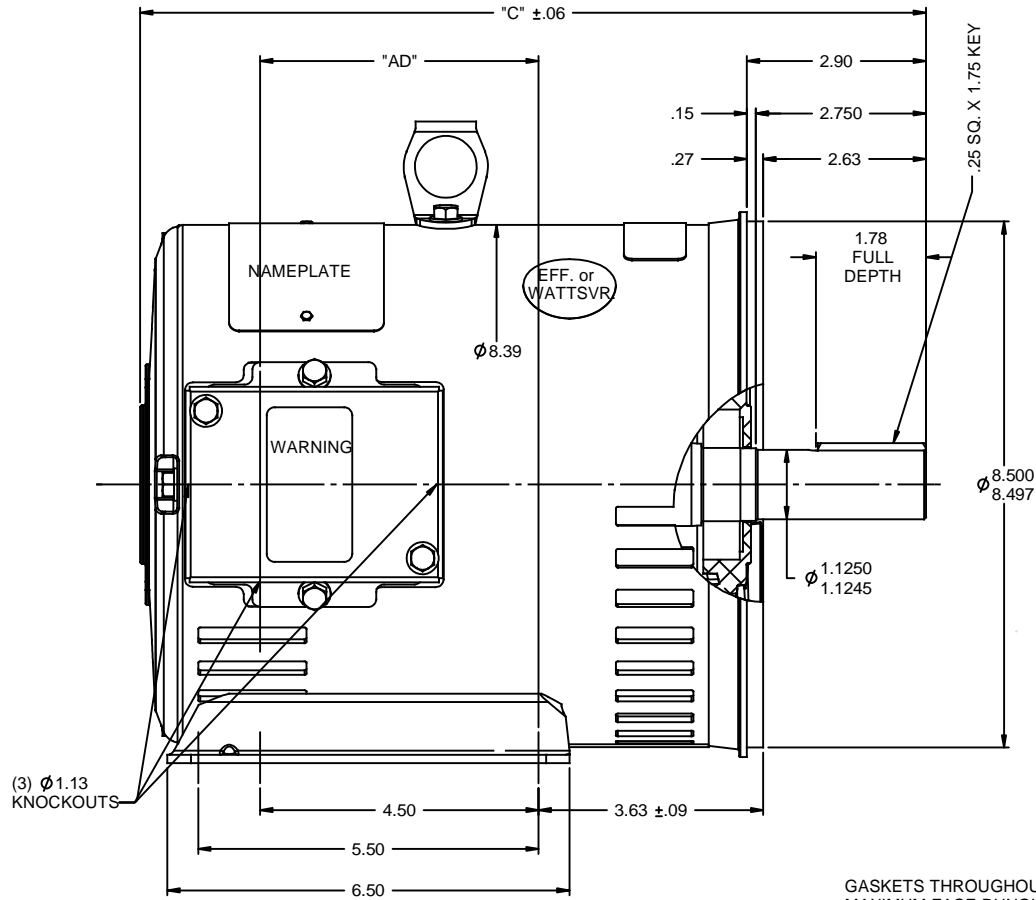


## Nameplate Specifications

Phase	3	Output HP	7.50 & 7.50 Hp
Output KW	5.6 & 5.6 kW	Voltage	230/460 & 200/400 V
Speed	3515 & 2880 rpm	Service Factor	1.15 & 1.15
Frame	184TC	Enclosure	Drip Proof
Thermal Protection	No Protection	Efficiency	88.5 & 87.1 %
Ambient Temperature	40 °C	Frequency	60 & 50 Hz
Current	17.6/8.8 & 20/10 A	Power Factor	90
Duty	Continuous	Insulation Class	F
Design Code	B	KVA Code	J
Drive End Bearing Size	6206	Opp Drive End Bearing Size	6205
UL	Recognized	CSA	Y
CE	Y	IP Code	22
Number of Speeds	1		

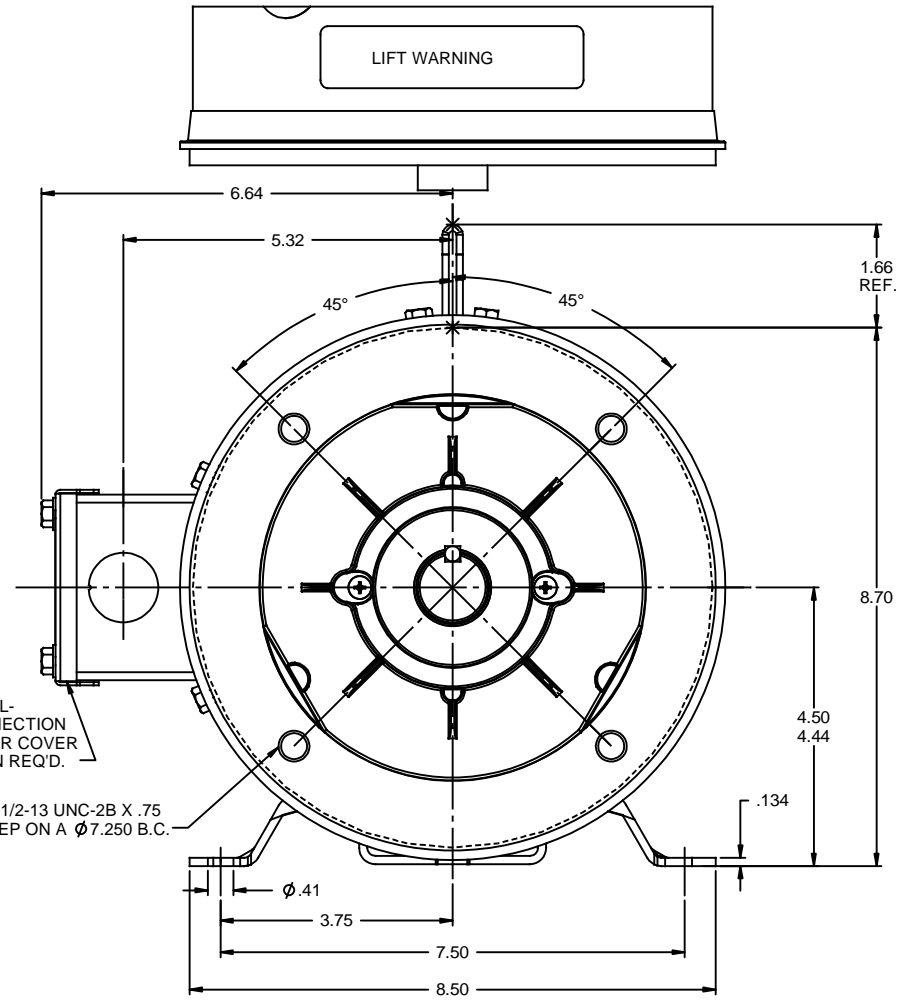
## Technical Specifications

Electrical Type	Squirrel Cage Induction Run	Starting Method	Across The Line
Poles	2	Rotation	Reversible
Resistance Main	1.4 Ohms	Mounting	Rigid Base
Motor Orientation	Horizontal	Drive End Bearing	Ball
Opp Drive End Bearing	Ball	Frame Material	Rolled Steel
Shaft Type	T	Overall Length	16.20 in
Frame Length	12.00 in	Shaft Diameter	1.125 in
Shaft Extension	2.75 in	Assembly/Box Mounting	F1 ONLY
Outline Drawing	035508-1200	Connection Drawing	005010.20




DECAL-  
CONNECTION  
UNDER COVER  
WHEN REQ'D.

(4) 1/2-13 UNC-2B X .75  
DEEP ON A  $\phi 7.250$  B.C.



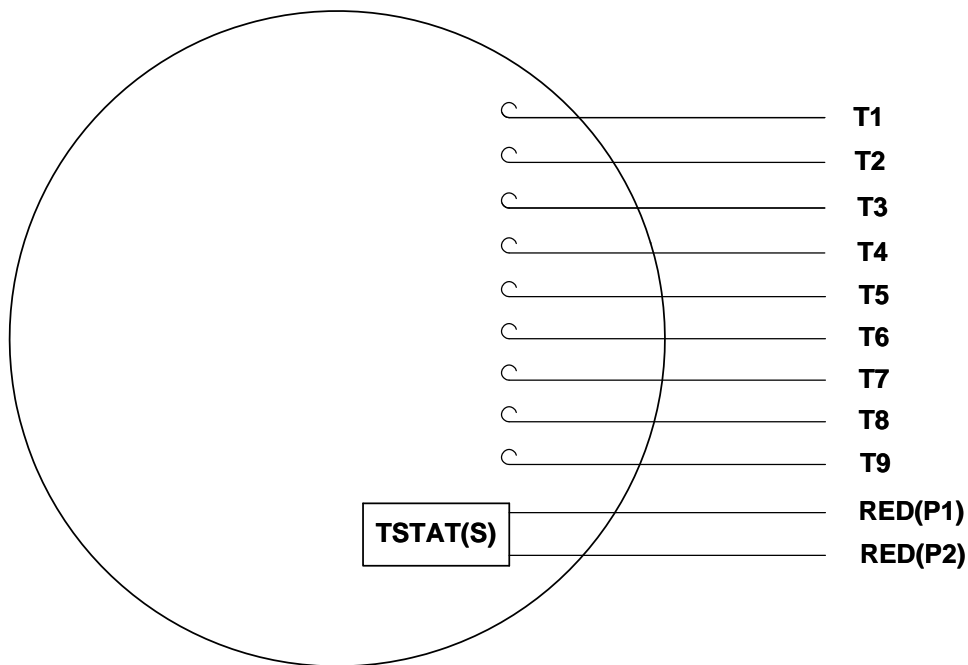
GASKETS THROUGHOUT  
MAXIMUM FACE RUNOUT TO BE .004 T.I.R.  
MAXIMUM PILOT ECCENTRICITY TO BE .004 T.I.R.  
PERMISSIBLE SHAFT RUNOUT TO BE .002 T.I.R.

DASH NO.	"C"	"AD"
850	12.70	4.50
900	13.20	5.00
950	13.70	5.50
1000	14.20	6.00
1050	14.70	6.50
1100	15.20	7.00
1150	15.70	7.50
1200	16.20	8.00

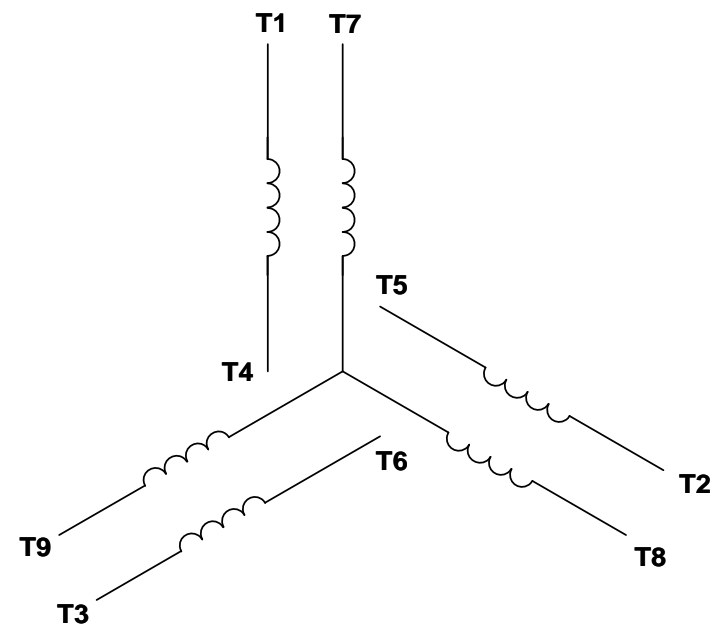
			TOLERANCES UNLESS SPECIFIED	 <b>REGAL-BELOIT CORPORATION</b>	DRAWN LST 10/14/05	
			DEC INCHES		CHK RW 10/19/05	
			X $\pm .1$	TITLE OUTLINE - 180TC FRAME DRIP PROOF - RIGID "C"	APPR KH 10/19/05	
			XX $\pm .03$		SCALE 1:2	
01	ADDED DASH NO. 1200 (132244.00)	PG 9/20/2010	XXX $\pm .005$	MATL	REF 035454	
-	UPDATED & REDRAWN IN SOLIDWORKS	LST 12/18/2009	XX XXXX $\pm .0005$		FMF	
REVISION		BY & DATE	CHK ANG $\pm 1/2^\circ$	FINISH	PAGE	OF
THIRD ANGLE PROJECTION			RFP	PREV	SIZE	DRAWING NO
			NETWORK FILE NAME	035508	<b>B</b>	<b>035508</b>
					REV	01

VIEW FROM OUTSIDE OF MOTOR AT SWITCH END.

Uncontrolled Copy



## LINE LEADS



VOLTAGE	L1	L2	L3	JOIN & INSULATE
HIGH	T1	T2	T3	(T4,T7) (T5,T8) (T6,T9)
LOW	T1,T7	T2,T8	T3,T9	T4,T5,T6

DRAWING REVISION G	REVISION BY MVG	DATE 04/05/2017
ECO ECO-0121253	APPROVED BY SM	DATE 04/05/2017

ECO DESCRIPTION  
ADDED P1 & P2 FOR TSTAT

TOLERANCES UNLESS OTHERWISE SPECIFIED:

DEC.	INCH	mm	ANGLE
.X	±0.1	[±2.5]	±0.5°
.XX	±0.01	[±0.25]	
.XXX	±0.005	[±0.127]	
.XXXX	±0.0005	[±0.0127]	

REMOVE BURRS & BREAK SHARP EDGES: .003/.015 [.076/.381] X 45°  
CORNER FILLETS: R.02 [.51]  
MACHINED SURFACES: 125/3.2 INCH/mm

mm SHOWN IN [BRACKETS]

DRAWN BY DBT 12/16/97	DATE
APPROVED BY KH 12/17/97	DATE
REFERENCE	
THIRD ANGLE PROJECTION	



Regal Beloit America, Inc.

DESCRIPTION CONN DIAGRAM-EXTERNAL 3 PHASE WITH PROTECTOR		
MATERIAL DECAL - 004014 (TSTAT) - 080582	PROCESS/FINISH STOCK	
SIZE A	DRAWING NUMBER 00501020	SHEET 1 OF 1

## Data Sheet

Date: 1/31/2018

132244.00



Data @ 460 V

## Motor Load Data

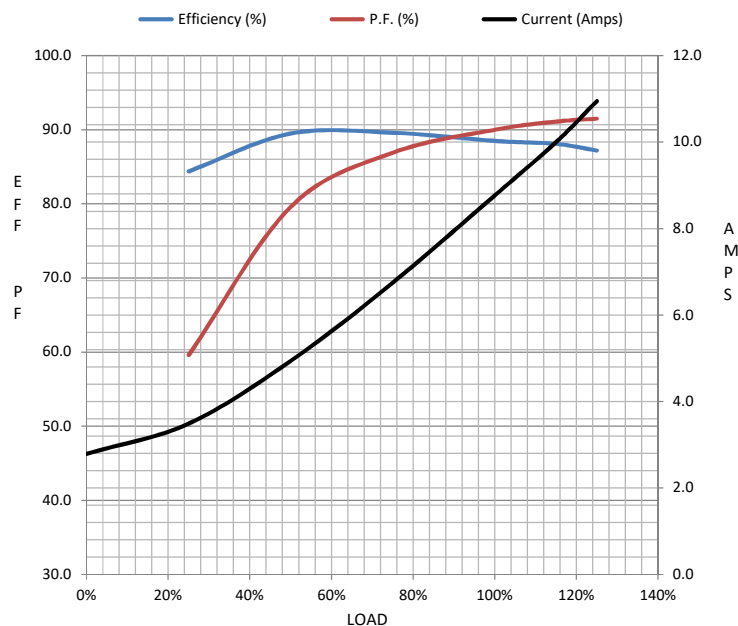
Load	0%	25%	50%	75%	100%	115%	125%	LR	
Current (Amps)	2.79	3.5	4.9	6.8	8.8	10.0	11.0	80.0	
Torque (ft-lb)	0.00	2.75	5.6	8.4	11.3	13.0	14.1	33.9	
RPM	3600	3578	3555	3530	3502	3,486	3474	0	
Efficiency (%)		84.4	89.5	89.6	88.5	88.1	87.2		
P.F. (%)	9.3	59.6	79.6	86.9	90.0	91.1	91.5	0.0	

## Motor Speed Data

	LR	Pull-Up	BD	Rated	Idle
Speed (RPM)	0	650	2800	3502	3600
Current (Amps)	80.0	73.6	48.0	8.8	2.79
Torque (ft-lb)	33.9	30.0	41.6	11.3	0.00

## Information Block

HP	7.5			
Sync. RPM	3600			
Frame	180			
Enclosure	DP			
Construction	TDW			
Voltage	230/460#200/400	V		
Frequency	60	Hz		
Design	A			
LR Code letter	J			
Service Factor	1.15			
Temp Rise @ FL	15	° C		
Duty	CONT			
Ambient	40	° C		
Elevation	1,000	feet		
Rotor/Shaft wk <sup>2</sup>	0.56	Lb-Ft <sup>2</sup>		
Ref Wdg	T8293 DR			
Sound Pressure @ 1M	0	dBA		
VFD Rating	NONE			
Outline Dwg	035508-1200			
Conn. Diag	005010.20			
Additional Specifications:				
0				
0				
EQUIV CKT (OHMS / PHASE)				
R1	R2	X1	X2	Xm
0.0000	0.0000	0.0000	0.0000	0.0000



## Speed - Torque Curve

