

PRODUCT INFORMATION PACKET



Model No: 132235.00

Catalog No: 132235.00

General Purpose Motor, 5 & 4 HP, 3 Ph, 60 & 50 Hz, 230/460 & 190/380 V, 1800 & 1500 RPM,
184T Frame, DP



Regal and Leeson are trademarks of Regal Rexnord Corporation or one of its affiliated companies.

©2023 Regal Rexnord Corporation, All Rights Reserved. MC017097E



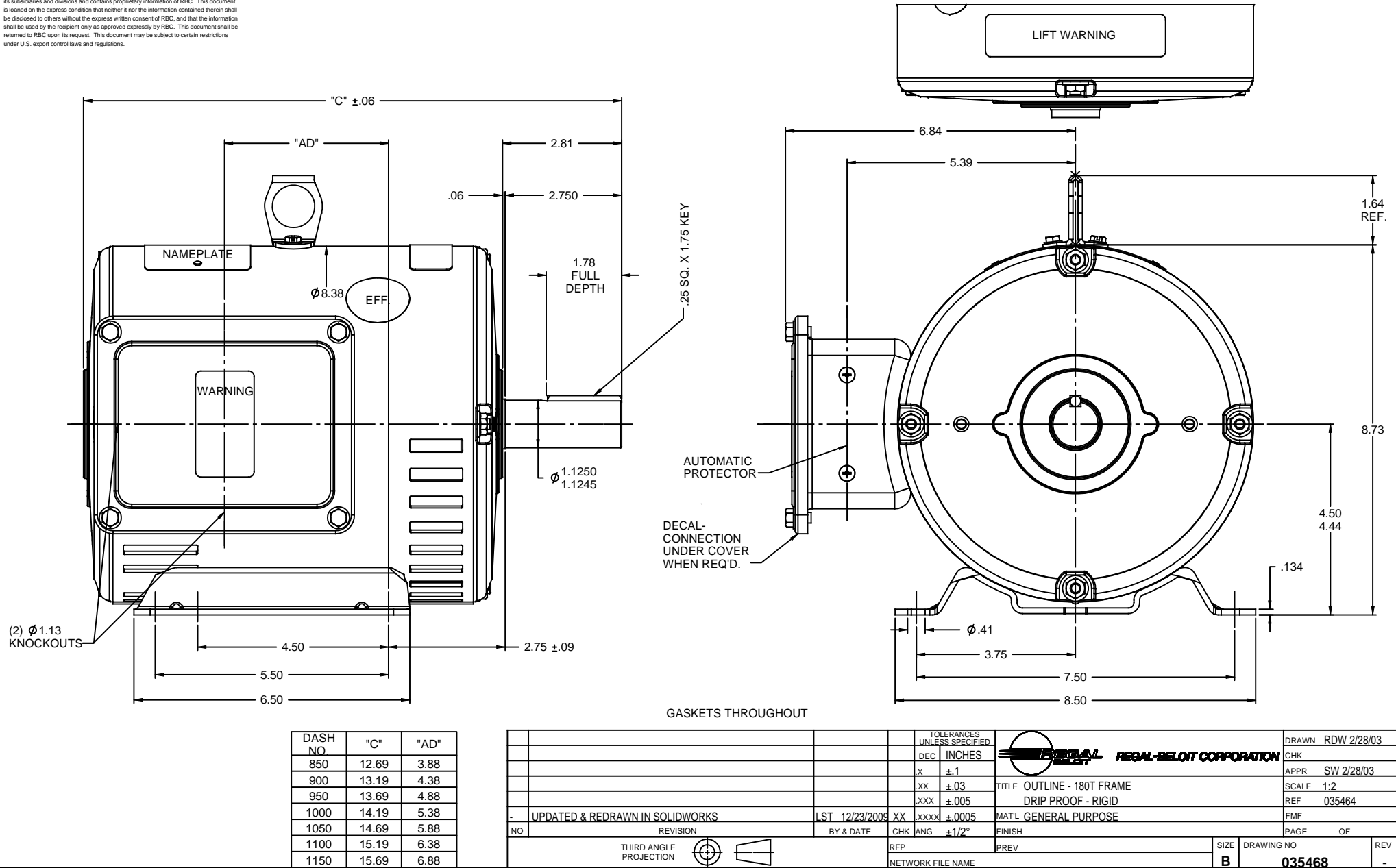


Nameplate Specifications

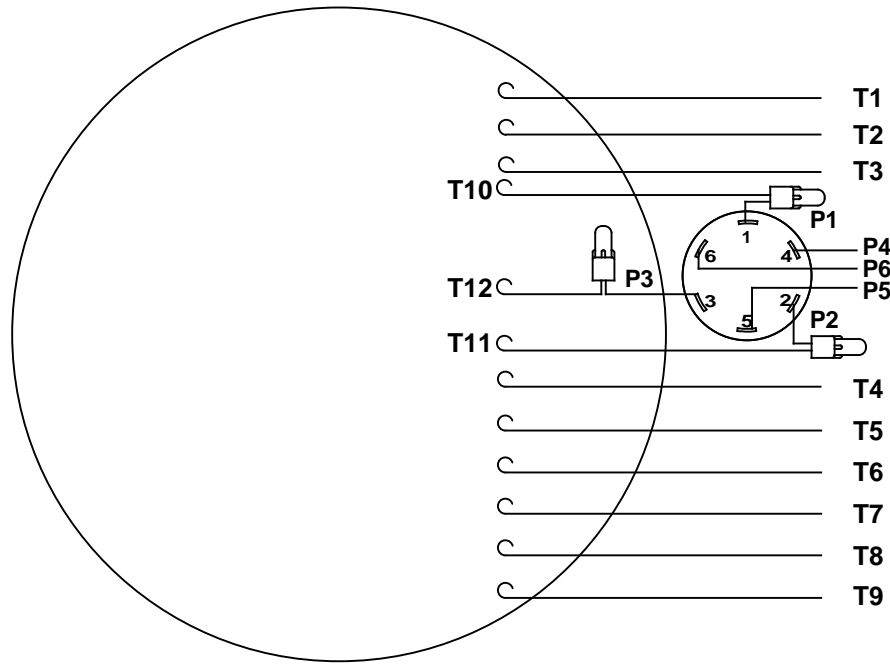
Phase	3	Output HP	5 & 4 Hp
Output KW	3.7 & 3.0 kW	Voltage	230/460 & 190/380 V
Speed	1755 & 1460 rpm	Service Factor	1.15 & 1.15
Frame	184T	Enclosure	Drip Proof
Thermal Protection	Automatic	Efficiency	89.5 & 89.5 %
Ambient Temperature	40 °C	Frequency	60 & 50 Hz
Current	12.6/6.3 & 12.4/6.2 A	Power Factor	83
Duty	Continuous	Insulation Class	F
Design Code	B	KVA Code	J
Drive End Bearing Size	6206	Opp Drive End Bearing Size	6205
UL	Recognized	CSA	Y
CE	Y	IP Code	22
Number of Speeds	1		

Technical Specifications

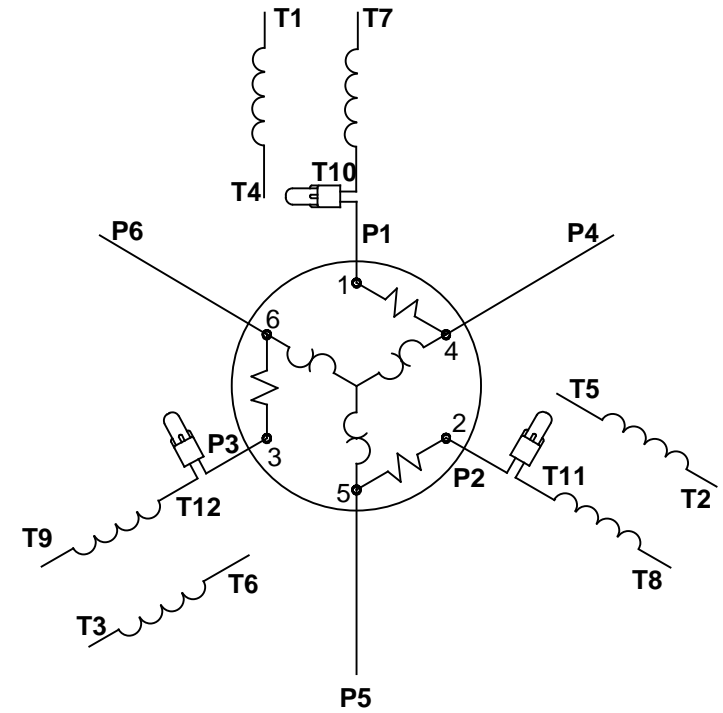
Electrical Type	Squirrel Cage Induction Run	Starting Method	Across The Line
Poles	4	Rotation	Reversible
Resistance Main	2.72 Ohms	Mounting	Rigid Base
Motor Orientation	Horizontal	Drive End Bearing	Ball
Opp Drive End Bearing	Ball	Frame Material	Rolled Steel
Shaft Type	T	Overall Length	14.19 in
Frame Length	10.00 in	Shaft Diameter	1.125 in
Shaft Extension	2.75 in	Assembly/Box Mounting	F1 ONLY
Connection Drawing	005020.02	Outline Drawing	035468-1000



VIEW FROM OUTSIDE OF MOTOR AT SWITCH END.


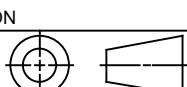


LINE LEADS



RBC PROPRIETARY AND CONFIDENTIAL INFORMATION
This document is the property of REGAL BELOIT CORPORATION ("RBC") including its subsidiaries and divisions and contains proprietary information of RBC. This document is loaned on the express condition that neither it nor the information contained therein shall be disclosed to others without the express written consent of RBC, and that the information shall be used by the recipient only as approved expressly by RBC. This document shall be returned to RBC upon its request. This document may be subject to certain restrictions under U.S. export control laws and regulations.

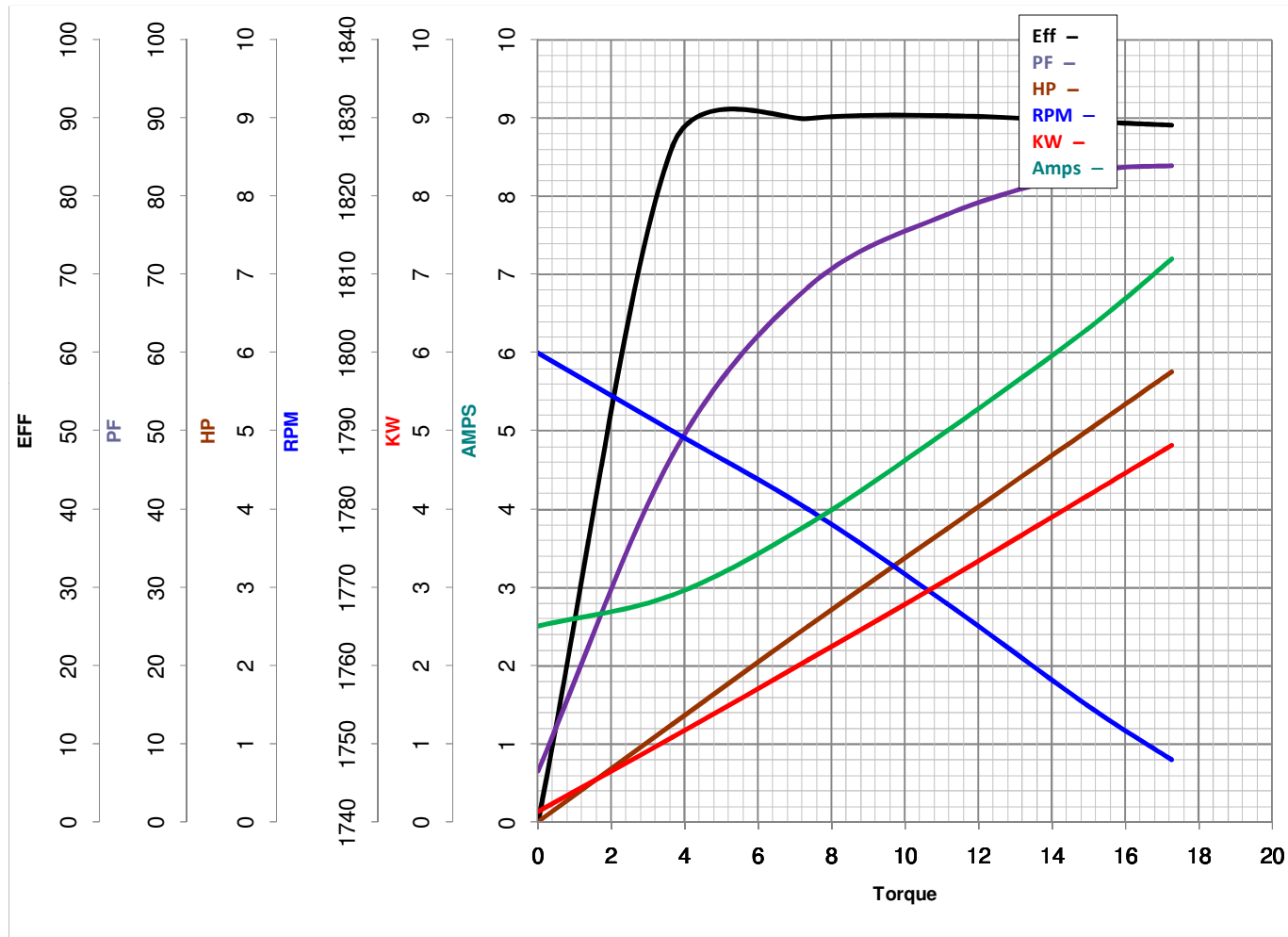
VOLTAGE	L1	L2	L3	JOIN	SEPARATE
HIGH	T1	T2	T3	(T4,T7) (T5,T8) (T6,T9)	(P4) (P5) (P6)
LOW	T1,T7	T2,T8	T3,T9	(T4,P4) (T5,P5) (T6,P6)	

				TOLERANCES UNLESS SPECIFIED			ELECTRIC MOTORS GEARMOTORS AND DRIVES		DRAWN VJB 02/18/11	
				DEC	INCHES		CHK			
				.X	±.1		APPR			
				.XX	±.01		SCALE 1:1			
				.XXX	±.005		REF			
02	ADDED REV TO AGREE WITH ORACLE	ARV 4/26/2011	KH	.XXXX	±.0005	TITLE EXTERNAL WIRING DIAGRAM TYPE "T" W/PROTECTOR		MAT'L DECAL - 004023-01		FMF
NO	REVISION	BY & DATE	CHK	ANG	±1/2°	FINISH		PAGE		OF
<div>THIRD ANGLE PROJECTION</div> 			RFP		PREV		SIZE A	DRAWING NO 005020-02		REV 02
			NETWORK FILE NAME 00502002							



LEESON ELECTRIC CORPORATION

TYPICAL PERFORMANCE CURVE for AC MOTOR

Model No 132235.00Curve at 460
60
5Volts
HZ
HPHP 5&4PHASE 3VOLTS 230/460&190/380Catalog No 132235.00HZ 60&50RPM 1755&1460

Torque in Lb.Ft

FL TORQUE 14.95 Lb.Ft
 BD TORQUE 47.7 Lb.Ft
 LR TORQUE 30 Lb.Ft

FL AMPS 12.6/6.3
 PU TORQUE 29.0 Lb.Ft
 LR AMPS 46.3

WINDING T84169-7

Date 5/21/2018