

PRODUCT INFORMATION PACKET



Model No: 132217.00

Catalog No: 132217.00

..5HP..1760RPM.184TC.TEFC.208-230/460V.3PH.60HZ.CONT.40C.1.15S.F..RIGID.5XAU1.....

Regal and Leeson are trademarks of Regal Rexnord Corporation or one of its affiliated companies.

©2023 Regal Rexnord Corporation, All Rights Reserved. MC017097E





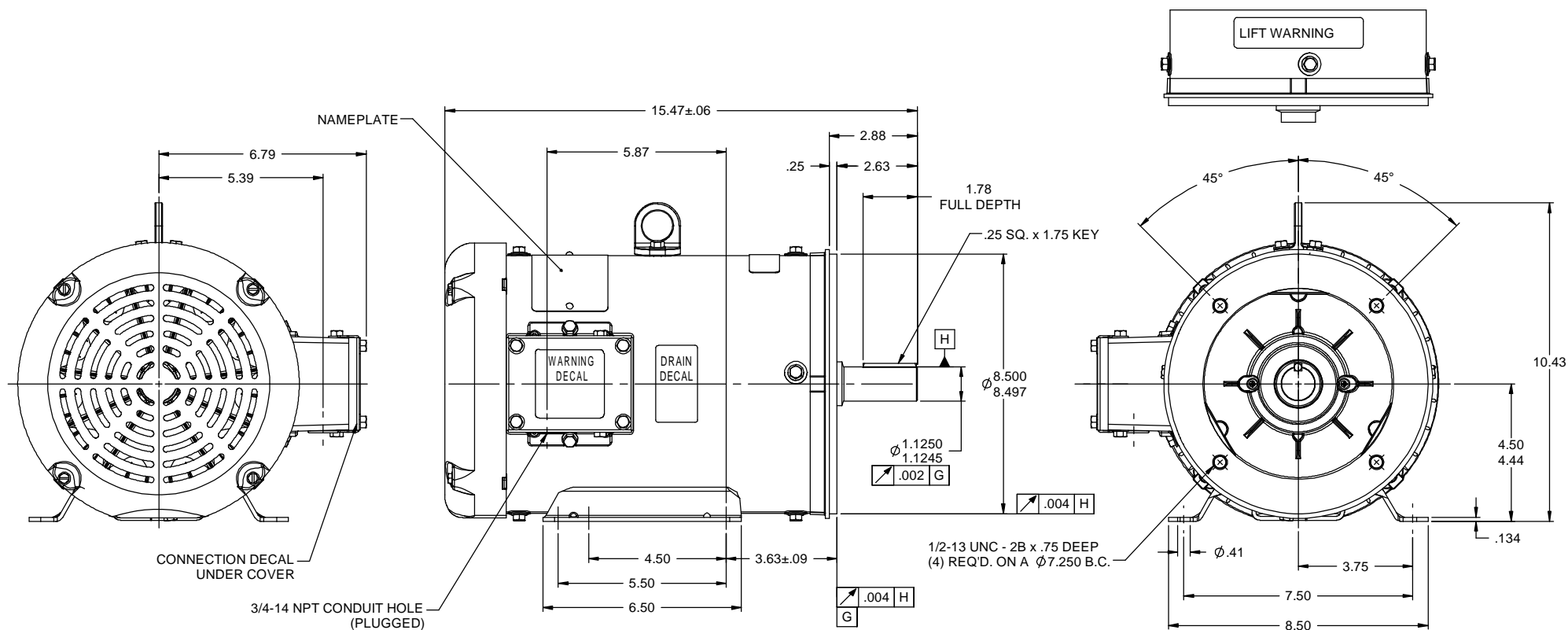
Nameplate Specifications

Phase	3	Output HP	5 & 3 Hp
Output KW	3.7 & 2.2 kW	Voltage	230/460 & 190/380 V
Speed	1760 & 1450 rpm	Service Factor	1.15 & 1.15
Frame	184TC	Enclosure	Totally Enclosed Fan Cooled
Thermal Protection	No Protection	Efficiency	89.5 %
Ambient Temperature	40 °C	Frequency	60 & 50 Hz
Current	12.6/6.3 & 10.4/5.2 A	Power Factor	83.1
Duty	Continuous	Insulation Class	F
Design Code	B	KVA Code	J
Drive End Bearing Size	6206	Opp Drive End Bearing Size	6205
UL	Recognized	CSA	Y
CE	N	IP Code	55
Number of Speeds	1		

Technical Specifications

Electrical Type	Squirrel Cage Induction Run	Starting Method	Across The Line
Poles	4	Rotation	Reversible
Resistance Main	2.68 Ohms	Mounting	Rigid Base
Motor Orientation	Horizontal	Drive End Bearing	Ball
Opp Drive End Bearing	Ball	Frame Material	Rolled Steel
Shaft Type	T	Assembly/Box Mounting	F1 ONLY
Outline Drawing	5XAU1OD	Connection Drawing	5XAU1WD

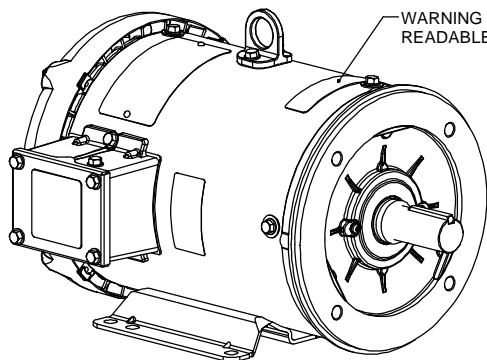
This is an uncontrolled document once printed or downloaded and is subject to change without notice. Date Created:06/23/2023



WASHGUARD MOTOR

SPECIAL FEATURES:

1. SHAFT SEALS & V-RING
2. PLUGGED DRAIN HOLES IN FRAME & CONDUIT BOX
3. BUNA-N GASKETS THROUGHOUT
4. STAINLESS STEEL SHAFT, HARDWARE & NAMEPLATE



				TOLERANCES UNLESS SPECIFIED		Dayton® Dayton Electric Mfg. Co. Lake Forest IL 60045 USA	DRAWN PG 7/21/10	
				DEC	INCHES		CHK	
				X	±.1		APPR	
				XX	±.03	TITLE OUTLINE - 184TC FRAME TEFC - RIGID "C"	SCALE	3:8
				XXX	±.005		REF	1TRY4A-OD
01	REVISED GRAINGER ADDRESS AS PER IS12-2651	PVR 9/6/2012	PI	XXXX	±.0005	MATL	FMF	132217.00
NO	REVISION	BY & DATE	CHK	ANG	±1/2°	FINISH	PAGE	OF
THIRD ANGLE PROJECTION				RFP	PREV	NETWORK FILE NAME	SIZE	DRAWING NO
							B	5XAU10D
							REV	01

