

PRODUCT INFORMATION PACKET



Model No: 132194.00

Catalog No: 132194.00

2HP..1170/970PRM.184.TENV./V.3PH.60/50HZ.AIROVER.NOT.65C..RIGID..C184T11NB8A

Regal and Leeson are trademarks of Regal Rexnord Corporation or one of its affiliated companies.

©2024 Regal Rexnord Corporation, All Rights Reserved. MC017097E





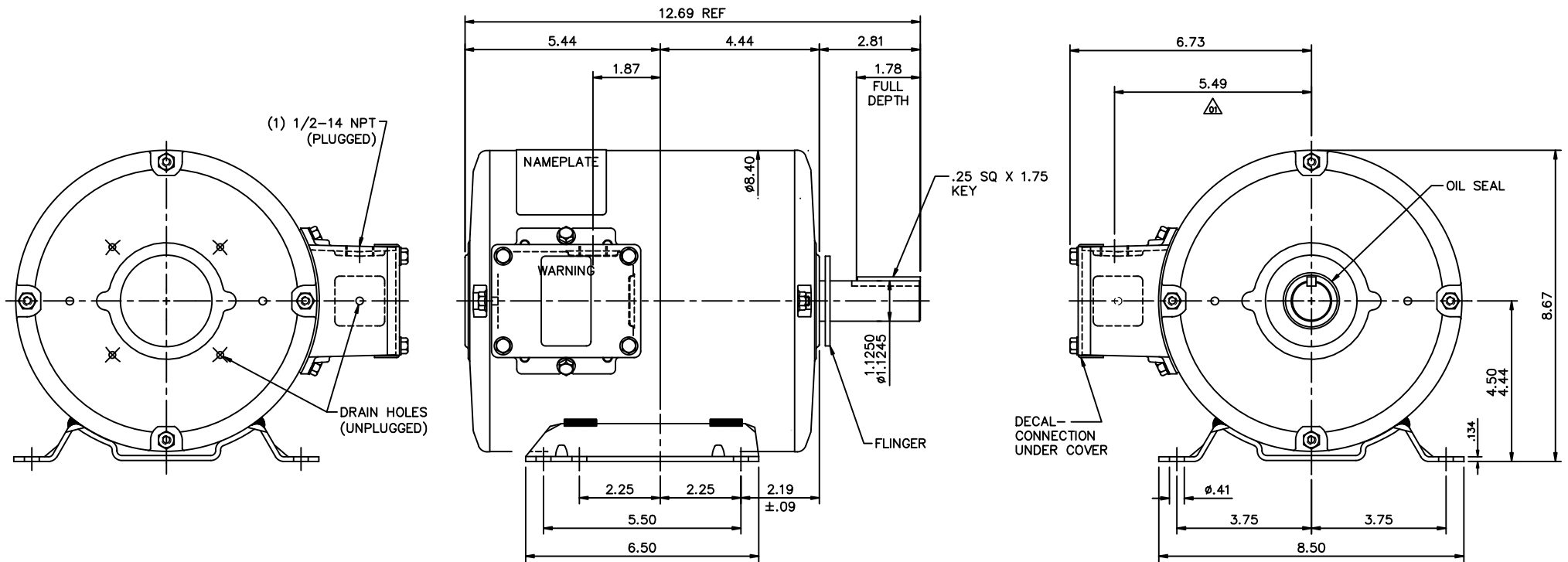
Nameplate Specifications

Phase	3	Output HP	2 & 2 Hp
Output KW	1.5 & 1.5 kW	Voltage	230/460 & 190-208/380-415 V
Speed	1170 & 970 rpm	Service Factor	1.15 & 1.15
Frame	184TV	Enclosure	Totally Enclosed Non Ventilated
Thermal Protection	No Protection	Efficiency	86.5 %
Ambient Temperature	65 °C	Frequency	60 & 50 Hz
Current	7.2/3.6 & 8-8.2/4-4.1 A	Power Factor	60
Duty	Air Over	Insulation Class	H
Design Code	B	KVA Code	L
Drive End Bearing Size	6207	Opp Drive End Bearing Size	6205
UL	Recognized	CSA	Y
CE	Y	IP Code	43
Number of Speeds	1		


Technical Specifications

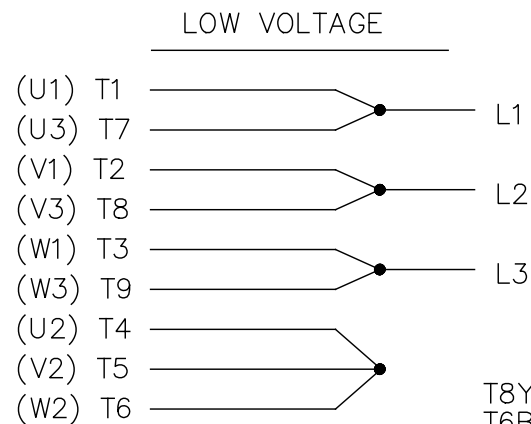
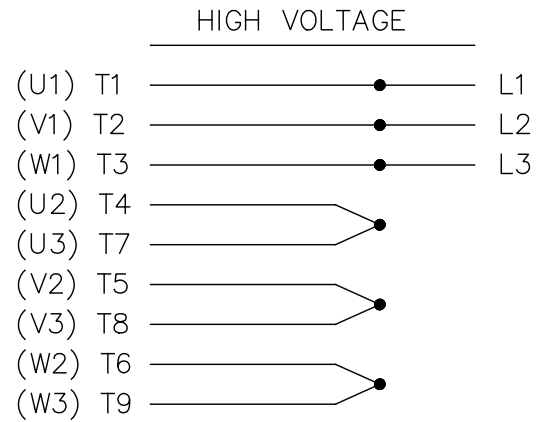
Electrical Type	Squirrel Cage Induction Run	Starting Method	Across The Line
Poles	6	Rotation	Reversible
Resistance Main	6.2 Ohms	Mounting	Rigid Base
Motor Orientation	Shaft Up	Drive End Bearing	Ball
Opp Drive End Bearing	Ball	Frame Material	Rolled Steel
Shaft Type	T	Shaft Diameter	1.125 in
Assembly/Box Mounting	F1 ONLY		
Outline Drawing	OL132194	Connection Drawing	A-EE7308

This is an uncontrolled document once printed or downloaded and is subject to change without notice. Date Created:09/12/2024

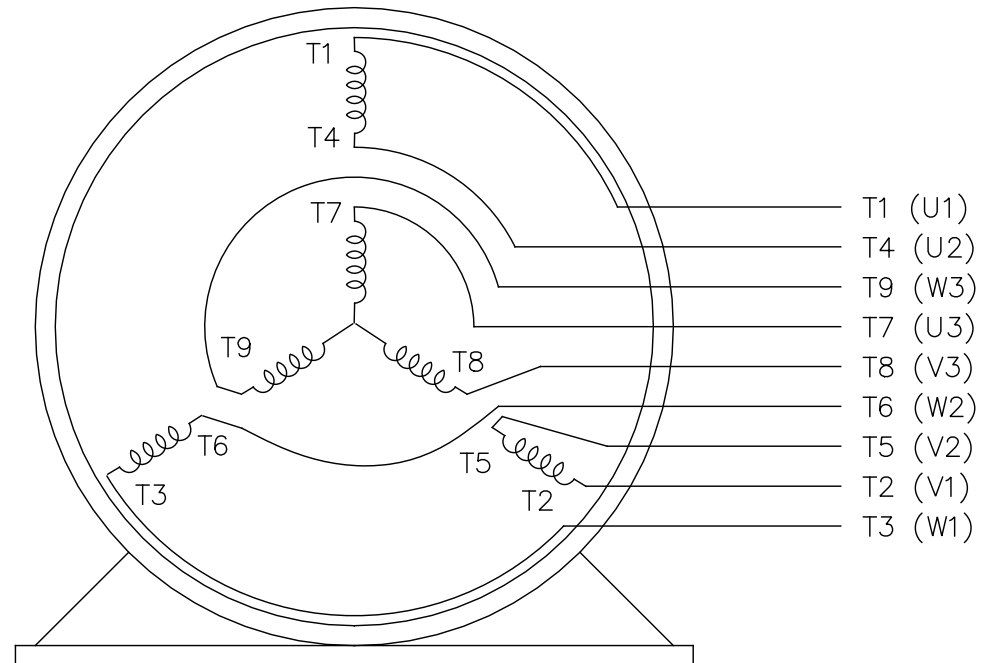
**SPECIAL FEATURES:**

- 1) SHAFT SEAL & V-RING
- 2) DRAIN HOLES IN LEAD END ENDBELL & CONDUIT BOX
- 3) STAINLESS STEEL SHAFT & KEY
- 4) GASKETS THROUGHOUT

			TOLERANCES UNLESS SPECIFIED			ELECTRIC MOTORS GEARMOTORS AND DRIVES		DRAWN VS 07/29/09	
			DEC.	INCHES				CHK	
03	UPDATED PER ISAAC 10-2576	LST 6/23/10	.XX	±.03	TITLE	OUTLINE - 180T FRAME T.E.A.O. - RIGID		APPD VS 07/29/09	
02	UPDATED PER MT2 CONVERSION ISAAC 10-0609	LST 2/8/10	.XXX	±.005				SCALE 3=8	
01	C. BOX HOLE LOCATION WAS 5.39 PER ISAAC 10-0201	LST 1/14/10	.XXXX	±.0005				REF OLPR090101	
NO.	REVISION	BY & DATE	CHK	ANG	±1/2"	FINISH	FASTENAL	PREV	
THIS DRAWING IN DESIGN AND DETAIL IS OUR PROPERTY AND MUST NOT BE USED EXCEPT IN CONNECTION WITH OUR WORK ALL RIGHTS OF DESIGN AND INVENTION ARE RESERVED THIS IS AN ELECTRONICALLY GENERATED DOCUMENT - DO NOT SCALE THIS PRINT						RFP	CAD FILE OL132194	SIZE B	DRAWING NO. OL132194
						DIST			REV. 03



THREE PHASE DUAL VOLTAGE MOTOR




VIEW OF TERMINAL END

REF.
WINDING DIAGRAM

T8Y, T2Y, T2BL, T4BX, T2EC, T2G
T6BZ, T2B, T6BL, T4AV, T6B, T4B

OPTIONAL CORD CONNECTION

L1 — WHITE —
L2 — RED —
L3 — BLACK —

DRAWING REVISION	REVISION BY	DATE	TOLERANCES UNLESS OTHERWISE SPECIFIED	DRAWN BY:			
ECO	APPROVED BY	DATE	DEC. mm INCH ANGLE .X ±2.5 ±0.11 ±0.5° .XX ±0.51 ±0.021 .XXX ±0.127 ±0.0051 .XXXX ±0.0127 ±0.00051	AS DATE: 02/20/2017			
ECO DESCRIPTION NEW DRAWING			REMOVE BURRS & BREAK SHARP EDGES .08/.38 [.003/.015]X 45° CORNER FILLETS R.51 [.02] MACHINED SURFACES INCH 125 mm 3.2	APPROVED BY: ST DATE: 02/20/2017	DESCRIPTION CONNECTION DIAGRA 3 PHASE – UAL VOLTAGE		
COPYRIGHT KAMAN INDUSTRIAL TECHNOLOGIES INC. VENDOR IDENTIFICATION TNP ALL RIGHTS RESERVED. PROPRIETARY AND CONFIDENTIAL INFORMATION – THIS DOCUMENT IS THE PROPERTY OF VENDOR IDENTIFICATION TNP ("OWNER") AND CONTAINS OWNER'S PROPRIETARY INFORMATION. ANY PERSON, CORPORATION OR OTHER FIRM RECEIVING IT IS DEEMED, BY RECEIVING IT, TO AGREE THAT IT, AND/OR ANY PART OF IT, SHALL NOT BE DISCLOSED TO ANY PERSON, CORPORATION OR OTHER ENTITY, DUPLICATED, AND/OR USED, EXCEPT AS EXPRESSLY APPROVED IN WRITING IN ADVANCE BY OWNER. THIS DOCUMENT SHALL BE RETURNED TO OWNER UPON REQUEST. IT MAY BE SUBJECT TO CERTAIN RESTRICTIONS UNDER APPLICABLE EXPORT CONTROL LAWS AND REGULATIONS.				REFERENCE EE7308	MATERIAL	PROCESS/FINISH	
			INCH SHOWN IN [BRACKETS]	THIRD ANGLE PROJECTION	SIZE DWG NO A EE7308TP		SHEET 1

EC Declaration of Conformity

The undersigned representing
the manufacturer:

Regal Beloit America
100 East Randolph St.
Wausau, WI 54401

and the authorized representative
established within the Community:

Marathon Electric UK
6F Thistleton Road Ind. Estate
Market Overton
Oakham, Rutland LE15 7PP UK

are committed to providing customers with products that comply with applicable regulations and international protocols to which they are subject, including the requirements of the European Parliament Directive on the Harmonization of the laws relating to electrical equipment designed for use within certain voltage limits (2014/35/EU).

Regal Beloit America declares that the following product(s), to which this declaration relates, are in conformity with the relevant sections of the EC standards listed below.

This statement supersedes any statements previously issued pertaining to the product(s) listed below and is subject to change without notice.

Model No : 132194.00

(Model No. may contain prefix and/or suffix characters)

Catalog No : 132194.00

Rework No : N/A

Directives :

Low Voltage Directive 2014/35/EU

Harmonized Standards Used :

EN 60034-1: 2010 (IEC 60034-1: 2010)

EN 60034-5: 2001/A1:2007 (IEC 60034-5: 2000/A1:2006)

Authorized Representative:



Michael A. Logsdon
Vice President, Technology

Authorized Representative in the Community:



Julian Clark
Marketing Engineer

Created on 09/01/2022

CE 22