

PRODUCT INFORMATION PACKET



Model No: 132184.00

Catalog No: 132184.00

..3HP..1760/1450RPM.182.TEFC./V.3PH.60/50HZ.CONT.40C..RIGID C.C182T17FK25B.....NOT.....

Regal and Leeson are trademarks of Regal Rexnord Corporation or one of its affiliated companies.

©2023 Regal Rexnord Corporation, All Rights Reserved. MC017097E





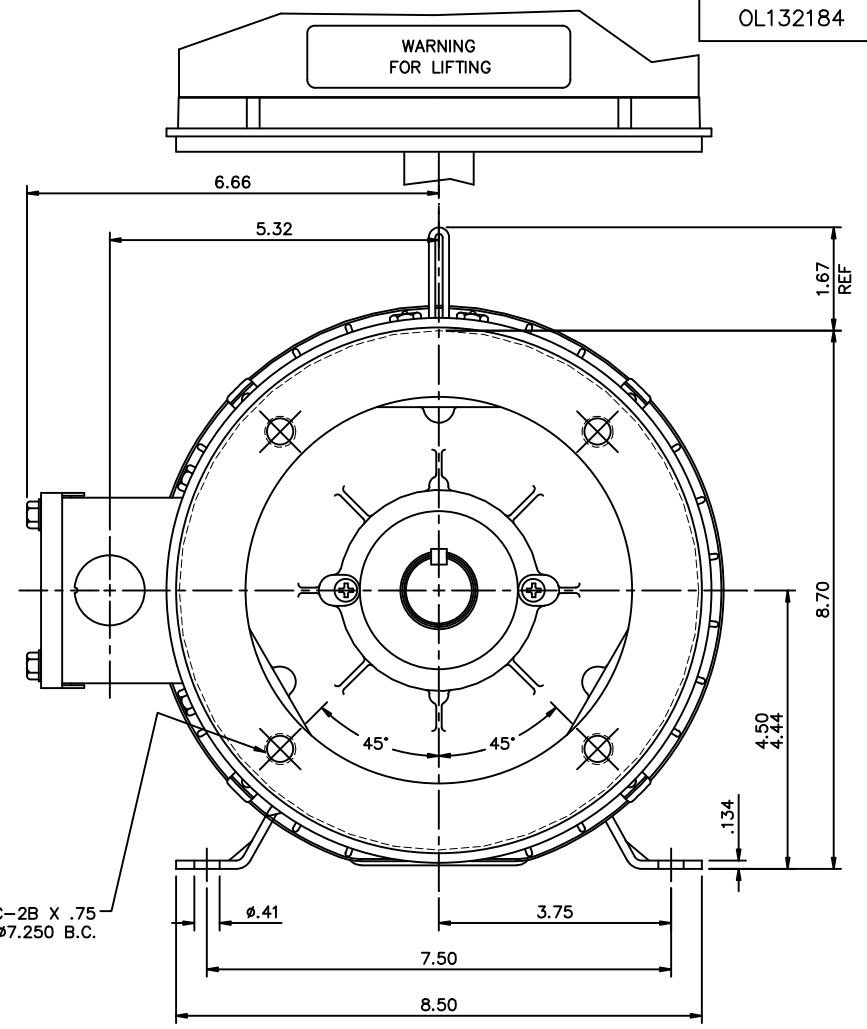
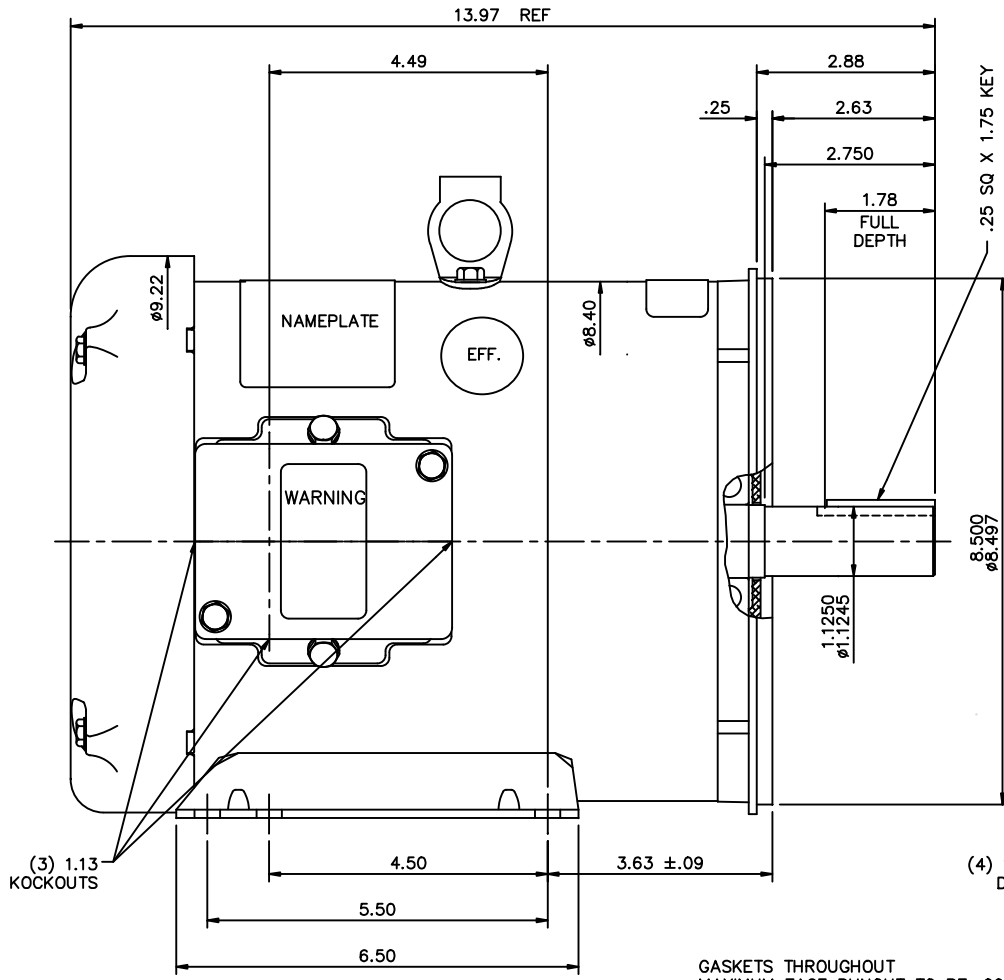
Nameplate Specifications

Phase	3	Output HP	3 & 3 Hp
Output KW	2.2 & 2.2 kW	Voltage	230/460 & 208/415 V
Speed	1760 & 1470 rpm	Service Factor	1.15 & 1.15
Frame	182TC	Enclosure	Totally Enclosed Fan Cooled
Thermal Protection	No Protection	Efficiency	89.5 %
Ambient Temperature	40 °C	Frequency	60 & 50 Hz
Current	7.8/3.9 & 7/3.5 A	Power Factor	80.5
Duty	Continuous	Insulation Class	F
Design Code	NO DESIGN CODE	KVA Code	K
Drive End Bearing Size	6206	Opp Drive End Bearing Size	6205
UL	Recognized	CSA	Y
CE	Y	IP Code	43
Number of Speeds	1		

Technical Specifications

Electrical Type	Squirrel Cage Induction Run	Starting Method	Across The Line
Poles	4	Rotation	Reversible
Resistance Main	6.08 Ohms	Mounting	Rigid Base
Motor Orientation	Horizontal	Drive End Bearing	Ball
Opp Drive End Bearing	Ball	Frame Material	Rolled Steel
Shaft Type	T	Assembly/Box Mounting	F1 ONLY
Outline Drawing	OL132184	Connection Drawing	005010.01

This is an uncontrolled document once printed or downloaded and is subject to change without notice. Date Created:06/22/2023



(4) 1/2-13 UNC-2B X .75 DEEP ON A Ø7.250 B.C.

GASKETS THROUGHOUT
 MAXIMUM FACE RUNOUT TO BE .004 T.I.R.
 MAXIMUM PILOT ECCENTRICITY TO BE .004 T.I.R.
 PERMISSIBLE SHAFT RUNOUT TO BE .002 T.I.R.

			TOLERANCES UNLESS SPECIFIED		LEESON	ELECTRIC MOTORS GEARMOTORS AND DRIVES	DRAWN VS 11/26/08	
			DEC.	INCHES			CHK	
			.X	±.1			APPD	VS 11/26/08
			.XX	±.03	TITLE	OUTLINE - 182TC FRAME	SCALE	1=2
			.XXX	±.005		TEFC - RIGID "C"	REF	035512
			.XXXX	±.0005	MAT'L	GENERAL PURPOSE	FMF	132184.00
01	UPDATED PER MT2 CONVERSION	ISAAC 10-0609	LST	2/5/10	CHK	ANG ±1/2"	FINISH	PREV
REVISION			BY & DATE			SIZE		
						DRAWING NO.		
						B		
						OL132184		
						REV.		
						01		

THIS DRAWING IN DESIGN AND DETAIL IS OUR PROPERTY AND MUST NOT BE USED EXCEPT IN CONNECTION WITH OUR WORK ALL RIGHTS OF DESIGN AND INVENTION ARE RESERVED
 THIS IS AN ELECTRONICALLY GENERATED DOCUMENT - DO NOT SCALE THIS PRINT

005010-01

VIEW FROM OUTSIDE OF MOTOR AT SWITCH END.



				TOLERANCES UNLESS SPECIFIED		 Regal Beloit America, Inc.			DRAWN	RDW 04/12/02	
				DEC.	INCHES				CHK		
				.X	±.1				APPD		
				.XX	±.01				SCALE	1=1	
				.XXX	±.005	TITLE	EXTERNAL WIRING DIAGRAM 3 PHASE W/O PROTECTOR			REF	FIG.2-51
A	UPDATED TO REGAL LOGO	SAJ 06/26/15	AJY	.XXXX	±.0005	MAT'L.	DECAL - 004014			FMF	
NO.	REVISION	BY & DATE	CHK	ANG	±1/2"	FINISH				PREV	
THIS DRAWING IN DESIGN AND DETAIL IS OUR PROPERTY AND MUST NOT BE USED EXCEPT IN CONNECTION WITH OUR WORK ALL RIGHTS OF DESIGN AND INVENTION ARE RESERVED THIS IS AN ELECTRONICALLY GENERATED DOCUMENT - DO NOT SCALE THIS PRINT				RFP	04/12/02	CAD FILE	00501001	SIZE	DRAWING NO.		REV
				DIST	BRF-NLV			A	005010-01	A	