

PRODUCT INFORMATION PACKET



Model No: 132137.00

Catalog No: 132137.00

3HP..3515RPM.182.DP.230/460V.3PH.60HZ.CONT.NOT.40C.1.15SF.RIGID..C182T34DK9A

Regal and Leeson are trademarks of Regal Rexnord Corporation or one of its affiliated companies.

©2024 Regal Rexnord Corporation, All Rights Reserved. MC017097E





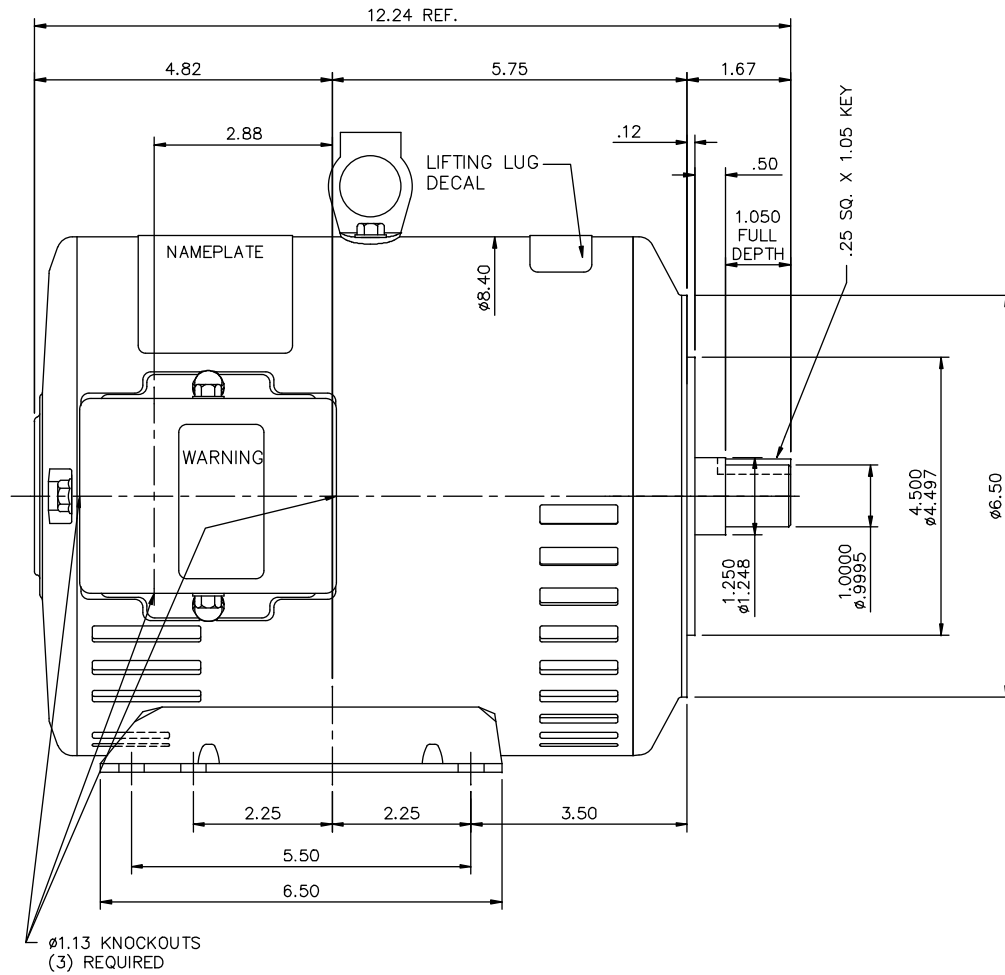
Nameplate Specifications

Phase	3	Output HP	3 Hp
Output KW	2.2 kW	Voltage	230/460 V
Speed	3515 rpm	Service Factor	1.15
Frame	182TCY	Enclosure	Drip Proof
Thermal Protection	No Protection	Efficiency	85.5 %
Ambient Temperature	40 °C	Frequency	60 Hz
Current	7.6/3.8 A	Power Factor	87
Duty	Continuous	Insulation Class	F
Design Code	B	KVA Code	K
Drive End Bearing Size	6207	Opp Drive End Bearing Size	6205
UL	Recognized	CSA	Y
CE	Y	IP Code	22
Number of Speeds	1		

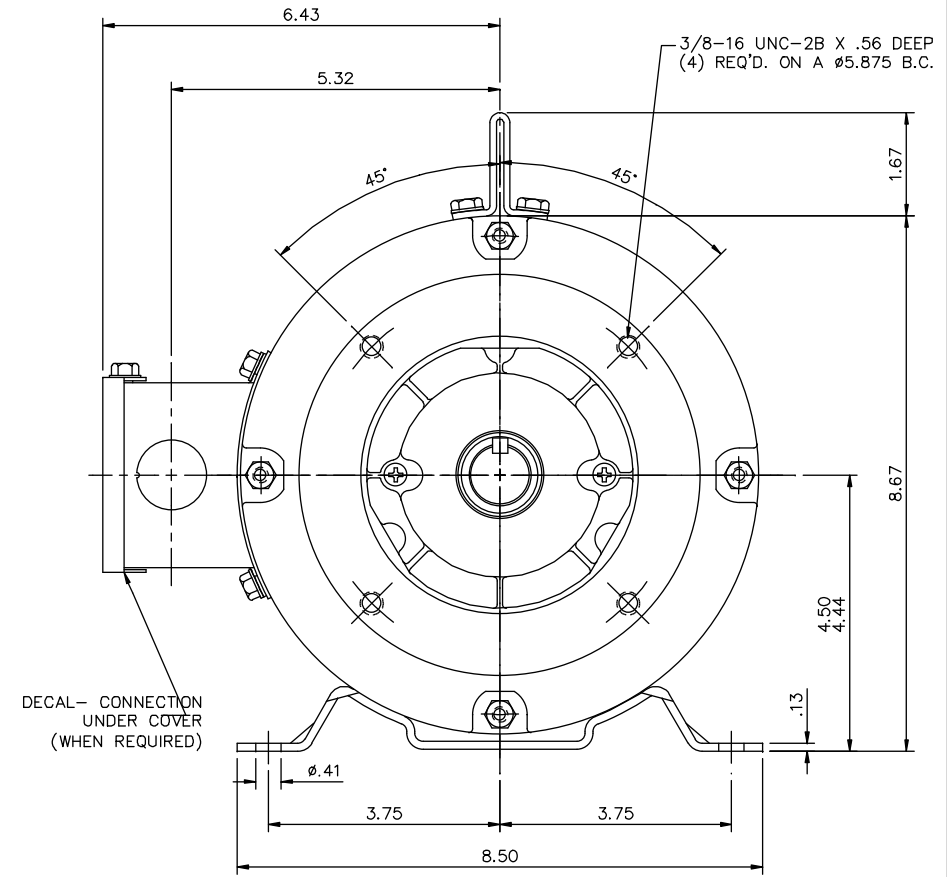
Technical Specifications

Electrical Type	Squirrel Cage Induction Run	Starting Method	Across The Line
Poles	2	Rotation	Reversible
Resistance Main	3.72 Ohms	Mounting	Rigid Base
Motor Orientation	Horizontal	Drive End Bearing	Ball
Opp Drive End Bearing	Ball	Frame Material	Rolled Steel
Shaft Type	Single Special Extension	Assembly/Box Mounting	F1 ONLY
Outline Drawing	OL132137	Connection Drawing	005010.01


This is an uncontrolled document once printed or downloaded and is subject to change without notice. Date Created:09/24/2024



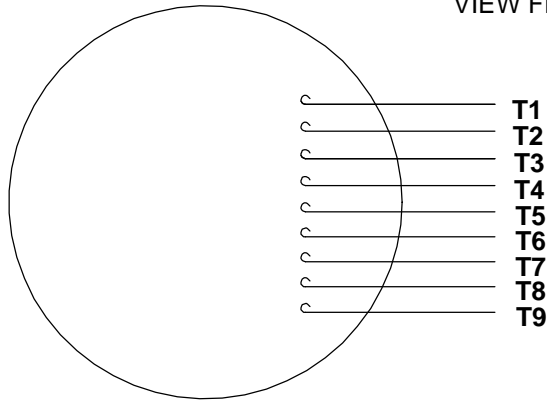
MAXIMUM FACE RUNOUT TO BE .004 T.I.R.
MAXIMUM PILOT ECCENTRICITY TO BE .004 T.I.R.
PERMISSIBLE SHAFT RUNOUT TO BE .002 T.I.R.



GASKETS THROUGHOUT

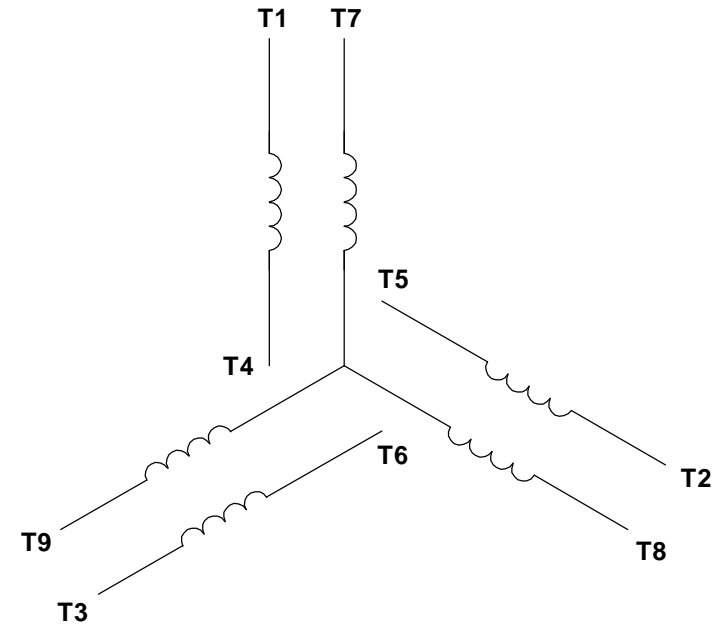
				TOLERANCES UNLESS SPECIFIED			ELECTRIC MOTORS GEARMOTORS AND DRIVES	DRAWN VS 06/07/07	
				DEC.	INCHES			CHK	
				.X	±.1			APPD	
				.XX	±.03	TITLE	OUTLINE- 182TC FRAME DRIP PROOF- RIGID "C"	SCALE	1=2
				.XXX	±.005			REF	OL131964
01	NAME PLATE AND WARNING DECAL UPDATED	PVR 11/06/13	GR	.XXXX	±.0005	MAT'L		FMF	132137.00
NO.	REVISION	BY & DATE	CHK	ANG	±1/2'	FINISH		PREV	
THIS DRAWING IN DESIGN AND DETAIL IS OUR PROPERTY AND MUST NOT BE USED EXCEPT IN CONNECTION WITH OUR WORK ALL RIGHTS OF DESIGN AND INVENTION ARE RESERVED THIS IS AN ELECTRONICALLY GENERATED DOCUMENT - DO NOT SCALE THIS PRINT				RFP		CAD FILE	OL132137	SIZE	DRAWING NO.
				DIST				B	OL132137
									REV.
									01

VIEW FROM OUTSIDE OF MOTOR AT SWITCH END.



MODEL NO.	HP	RPM	VOLTAGE	MODEL NO.	HP	RPM	VOLTAGE
3N841	1/4	1725	208-230/460	6WY43	1 1/2	1740	208-230/460
3N842	1/3	1725	208-230/460	6WY44	1 1/2	3450	208-230/460
3N851	1/3	3450	208-230/460	6WY45	1 1/2	3450	208-230/460
3N852	1/2	3450	208-230/460	6WY46	2	1740	208-230/460
3N854	1/3	3450	208-230/460	6WY47	2	1740	208-230/460
3N855	1/2	3450	208-230/460	6WY48	2	3450	208-230/460
6WY28	1/3	1740	208-230/460	6WY49	2	3450	208-230/460
6WY29	1/3	3450	208-230/460	6WY50	3	3450	208-230/460
6WY30	1/2	1140	208-230/460	6WY51	1/2	1140	208-230/460
6WY31	1/2	1740	208-230/460	6WY52	1/2	1140	208-230/460
6WY32	1/2	3450	208-230/460	6WY53	1/2	1740	208-230/460
6WY33	3/4	1140	208-230/460	6WY54	3/4	1140	208-230/460
6WY34	3/4	1740	208-230/460	6WY55	3/4	1740	208-230/460
6WY35	3/4	3450	208-230/460	6WY56	1	1140	208-230/460
6WY36	1	1140	208-230/460	6WY57	1	1740	208-230/460
6WY37	1	1140	208-230/460	6WY58	1	1740	208-230/460
6WY38	1	1740	208-230/460	6WY59	1 1/2	1740	208-230/460
6WY39	1	1740	208-230/460	6WY60	1 1/2	1740	208-230/460
6WY40	1	3450	208-230/460	6WY61	2	1740	208-230/460
6WY41	1	3450	208-230/460	6WY62	2	1740	208-230/460
6WY42	1	1740	208-230/460				


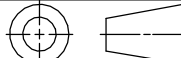
LINE LEADS



VOLTAGE	L1	L2	L3	JOIN & INSULATE
HIGH	T1	T2	T3	(T4,T7) (T5,T8) (T6,T9)
LOW	T1,T7	T2,T8	T3,T9	T4,T5,T6

RBC PROPRIETARY AND CONFIDENTIAL INFORMATION

This document is the property of REGAL BELOIT CORPORATION ("RBC") including its subsidiaries and divisions and contains proprietary information of RBC. This document is loaned on the express condition that neither it nor the information contained therein shall be disclosed to others without the express written consent of RBC, and that the information shall be used by the recipient only as approved expressly by RBC. This document shall be returned to RBC upon its request. This document may be subject to certain restrictions under U.S. export control laws and regulations.

				TOLERANCES UNLESS SPECIFIED		 Dayton Electric Mfg. Co. Lake Forest IL 60045 USA	DRAWN RDW 05/09/05		
				DEC	INCHES		CHK		
04	REVISED GRAINGER ADDRESS AS PER IS12-2651	PVR 7/4/2012	PI	.X	±.1	TITLE EXTERNAL WIRING DIAGRAM 3 PHASE W/O PROTECTOR	APPR KJH 05/09/05		
03	REDRAWN IN SOLIDWORKS	VJB 02/08/11		.XX	±.01		SCALE 1:1		
02	ADDED 3N841, 842, 851, 852, 854 & 855 TO CHART	RDW 10/28/05	KH	.XXX	±.005		REF		
01	REMOVED 4YU41, ADDED 6WY28 - 6WY62	RDW 8/01/05	KH	.XXXX	±.0005	MAT'L DECAL - 004014	FMF		
NO	REVISION	BY & DATE	CHK	ANG	±1/2°	FINISH	PAGE OF		
THIRD ANGLE PROJECTION 			RFP		PREV	SIZE	DRAWING NO		REV
			NETWORK FILE NAME		00501001WD	A	005010-01WD		04