

PRODUCT INFORMATION PACKET

Model No: 132120.00

Catalog No: 132120.00

7.5HP..1725RPM.184.DP./V.3.60HZ..NOT.40C..PARTIAL MOTOR..N184K17DM4A

Regal and are trademarks of Regal Rexnord Corporation or one of its affiliated companies.
©2022 Regal Rexnord Corporation, All Rights Reserved. MC017097E



Nameplate Specifications

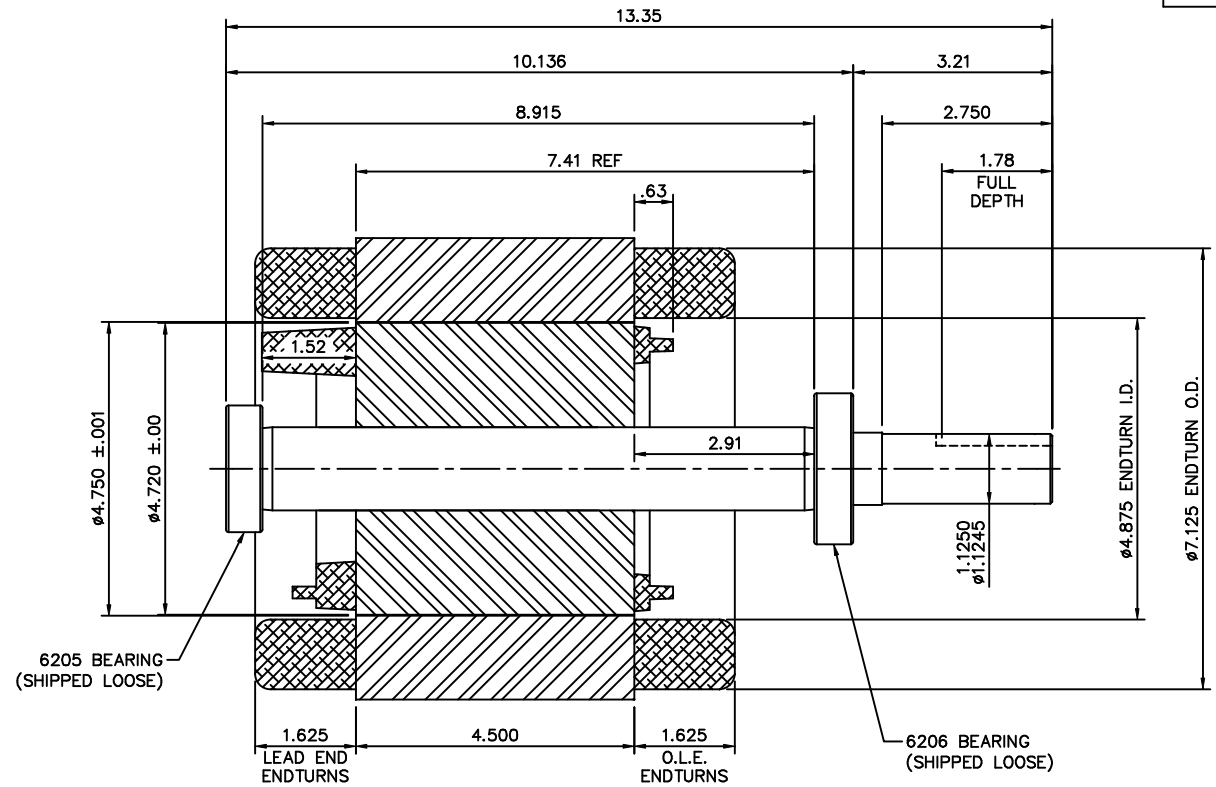
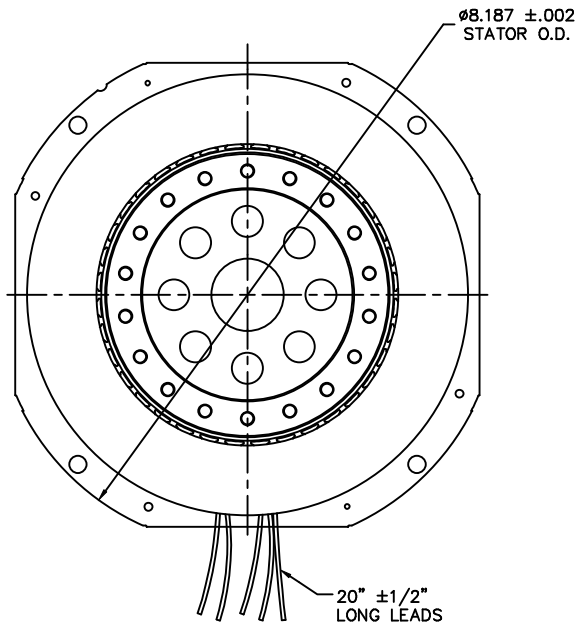
| | | | |
|------------------------|----------------|----------------------------|------------|
| Output HP | 7.50 Hp | Output KW | 5.6 kW |
| Frequency | 60 Hz | Voltage | 240 V |
| Current | 32.4 A | Speed | 1725 rpm |
| Service Factor | 1 | Phase | 1 |
| Efficiency | 81.5 % | Power Factor | 87 |
| Duty | Continuous | Insulation Class | F |
| Design Code | NO DESIGN CODE | KVA Code | F |
| Frame | 184T | Enclosure | Drip Proof |
| Thermal Protection | No Protection | Ambient Temperature | 40 °C |
| Drive End Bearing Size | 6206 | Opp Drive End Bearing Size | 6205 |
| UL | No | CSA | N |
| CE | N | IP Code | 22 |
| Number of Speeds | 1 | | |

Technical Specifications

| | | | |
|-----------------------|-------------------------------|-----------------------|-----------------|
| Electrical Type | Capacitor Start Capacitor Run | Starting Method | Across The Line |
| Poles | 4 | Rotation | Fixed Clockwise |
| Resistance Main | .347 Ohms | Mounting | PARTIAL MOTOR |
| Motor Orientation | Horizontal | Drive End Bearing | Ball |
| Opp Drive End Bearing | Ball | Frame Material | Rolled Steel |
| Shaft Type | T | Assembly/Box Mounting | F1/F2 CAPABLE |
| Connection Drawing | 005509.01 | Outline Drawing | OL132120 |

This is an uncontrolled document once printed or downloaded and is subject to change without notice. Date Created:11/10/2022

OL132120



| | | | TOLERANCES UNLESS SPECIFIED | | LEESON | ELECTRIC MOTORS GEARMOTORS AND DRIVES | DRAWN VS 05/22/07 | |
|--|----------|-----------|--------------------------------|--------|---|---|-------------------|-------------|
| | | | DEC. | INCHES | | | CHK | |
| | | | .X | ±.1 | | | APPD | |
| | | | .XX | ±.03 | TITLE STATOR ASSEMBLY, ROTOR/SHAFT ASSEMBLY 1PH - 4 POLE | | SCALE | 1=2 |
| | | | .XXX | ±.005 | | | REF | PR060392 |
| | | | .XXXX | ±.0005 | MAT'L MOTOR PARTS | | FMF | |
| NO. | REVISION | BY & DATE | CHK | ANG | FINISH | PREV | | |
| THIS DRAWING IN DESIGN AND DETAIL IS OUR PROPERTY AND MUST NOT BE USED EXCEPT IN CONNECTION WITH OUR WORK ALL RIGHTS OF DESIGN AND INVENTION ARE RESERVED THIS IS AN ELECTRONICALLY GENERATED DOCUMENT - DO NOT SCALE THIS PRINT | | | RFP | | CAD FILE | OL132120 | SIZE | DRAWING NO. |
| | | | DIST | | | | B | OL132120 |
| | | | | | | | | REV. |

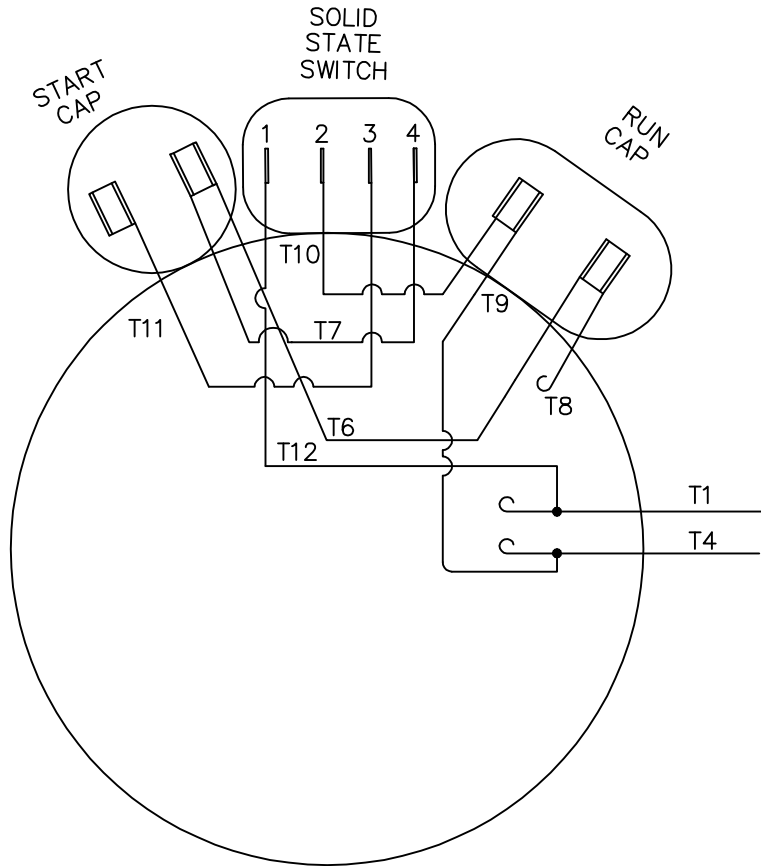
ERROR: undefined
OFFENDING COMMAND: bin

STACK:

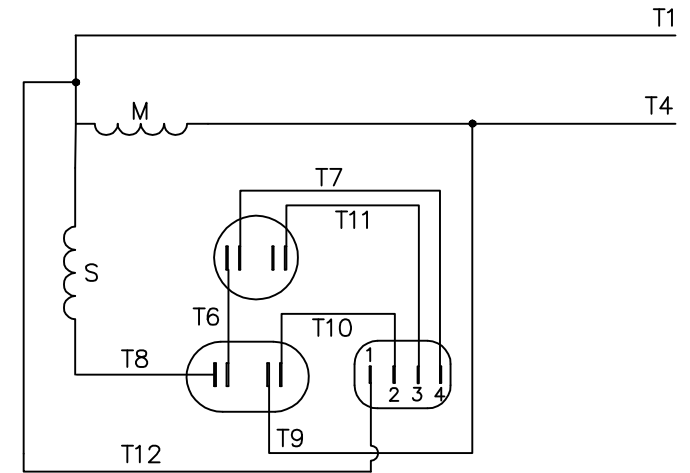
```
{/hofs exch def /vofs exch def /wid exch def /hei exch def /datasize  
exch def /ds exch def gsave hofs vofs translate wid hei scale wid hei  
true [ wid 0 0 hei neg 0 hei ] ds 0 ()/SubFileDecode filter /LZWDecode  
filter datasize dup 0 eq {pop pop pop pop pop pop }{string readstring  
pop imagemask }ifelse grestore }  
/im  
-savelevel-
```

VIEW FROM OUTSIDE OF MOTOR AT LEAD END.

005509-01



LINE LEADS



ROTATION
FACING
LEAD END

LINE 1
BLACK

LINE 2
WHITE

C.W.

T1

T4

| NO. | REVISION | BY & DATE | CHK | TOLERANCES UNLESS SPECIFIED | | TITLE | DRAWN YS 03/21/07 |
|--|----------|-----------|-----|--------------------------------|----------|---|-------------------|
| | | | | DEC. | INCHES | | |
| | | | | .X | ±.1 | EXTERNAL WIRING DIAGRAM TYPE "K" W/O PROTECTOR | CHK |
| | | | | .XX | ±.01 | | APPD |
| | | | | .XXX | ±.005 | | SCALE 1=1 |
| | | | | .XXXX | ±.0005 | | REF |
| | | | | ANG | ±1/2" | MAT'L. | FMF |
| | | | | | | FINISH | PREV |
| THIS DRAWING IN DESIGN AND DETAIL IS OUR PROPERTY AND MUST NOT BE USED EXCEPT IN CONNECTION WITH OUR WORK ALL RIGHTS OF DESIGN AND INVENTION ARE RESERVED THIS IS AN ELECTRONICALLY GENERATED DOCUMENT - DO NOT SCALE THIS PRINT | | | | RFP | CAD FILE | 00550901 | SIZE |
| | | | | DIST | | | A |
| | | | | | | DRAWING NO. | REV. |
| | | | | | | 005509-01 | |



ELECTRIC MOTORS
GEARMOTORS
AND DRIVES