

# PRODUCT INFORMATION PACKET

Model No: 132107.00

Catalog No: 132107.00

5HP..3500RPM.184.TEFC./230V.1PH.60HZ.CONT.NOT.40C.1.15SF.RIGID C..C184K34FK4A

Regal and are trademarks of Regal Rexnord Corporation or one of its affiliated companies.  
©2022 Regal Rexnord Corporation, All Rights Reserved. MC017097E



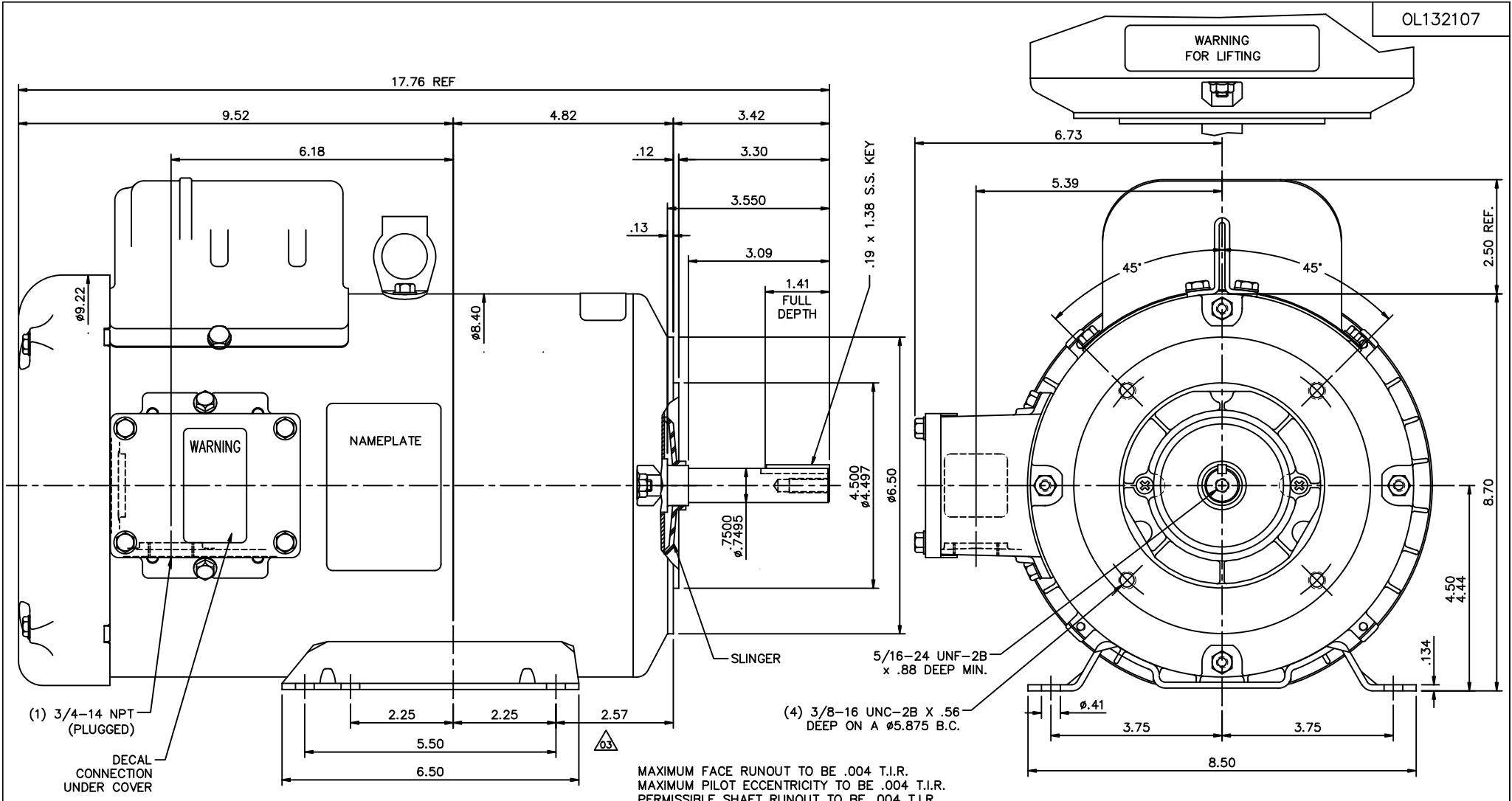
### Nameplate Specifications

Output HP	5 Hp	Output KW	3.7 kW
Frequency	60 Hz	Voltage	208-230 V
Current	21.8-19.8 A	Speed	3500 rpm
Service Factor	1.15	Phase	1
Efficiency	82.5 %	Power Factor	98
Duty	Continuous	Insulation Class	F
Design Code	L	KVA Code	H
Frame	184TCY	Enclosure	Totally Enclosed Fan Cooled
Thermal Protection	No Protection	Ambient Temperature	40 °C
Drive End Bearing Size	6207	Opp Drive End Bearing Size	6205
UL	Recognized	CSA	Y
CE	N	IP Code	43
Number of Speeds	1		

### Technical Specifications

Electrical Type	Capacitor Start Capacitor Run	Starting Method	Across The Line
Poles	2	Rotation	Selective Counterclockwise
Resistance Main	.342 Ohms	Mounting	Rigid Base
Motor Orientation	Horizontal	Drive End Bearing	Ball
Opp Drive End Bearing	Ball	Frame Material	Rolled Steel
Shaft Type	Single Special Extension	Shaft Diameter	0.750 in
Assembly/Box Mounting	F1 ONLY		
Outline Drawing	OL132107	Connection Drawing	005018.01

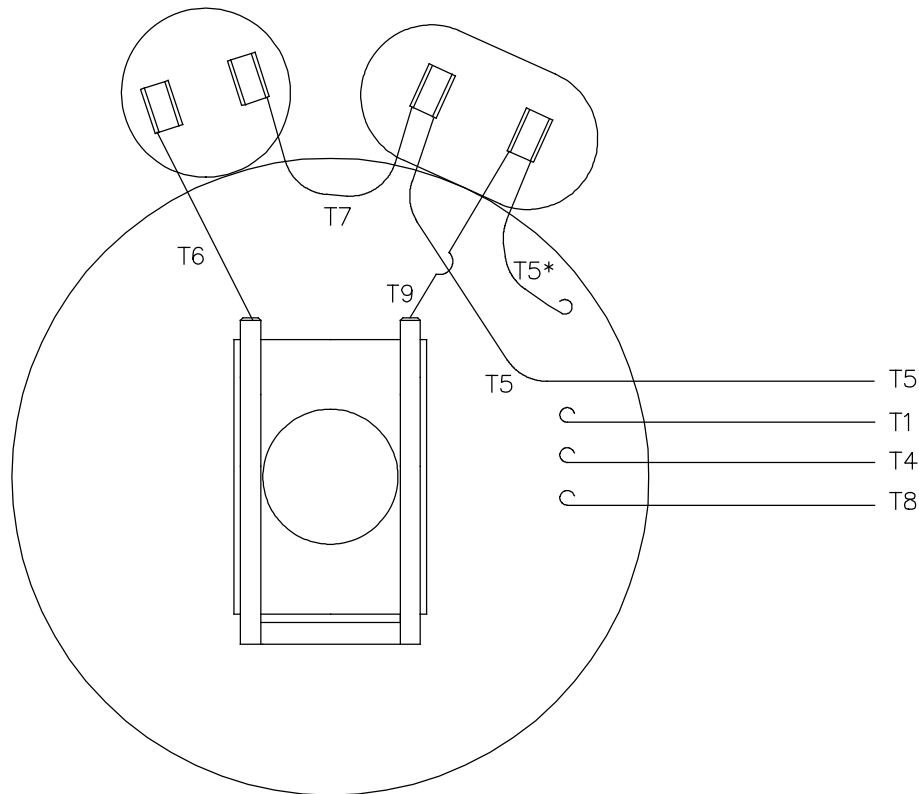
This is an uncontrolled document once printed or downloaded and is subject to change without notice. Date Created:11/01/2022



**SPECIAL FEATURES:**  
 1) GASKETS THROUGHOUT  
 2) STAINLESS STEEL SHAFT, HARDWARE & NAMEPLATE

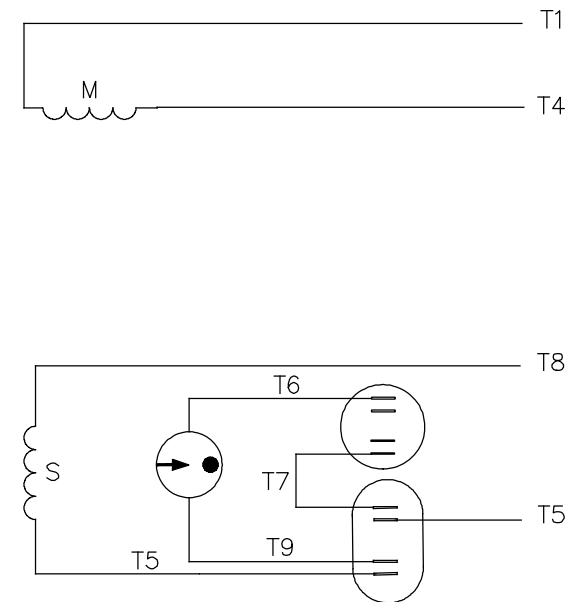
				TOLERANCES UNLESS SPECIFIED		LEESON		ELECTRIC MOTORS GEARMOTORS AND DRIVES		DRAWN LST 8/30/06	
				DEC.	INCHES					CHK	RW 8/31/06
04	UPDATED PER MT2 CONVERSION	ISAAC 10-0590	LST 2/5/10	.X	$\pm .1$					APPD	KH 8/31/06
03	BASE LOC WAS 2.75 PER ECO 07-165	RDW 1/16/07	KH .XX	$\pm .03$		TITLE		OUTLINE - 184TCY FRAME		SCALE 1=2	
02	ADDED PLASTIC SLINGER	LST 1/15/07	.XXX	$\pm .005$				T.E.F.C. - RIGID "C" FACE		REF PR030613	
01	REMOVED DRAIN SCREW FROM SIDEBOX PER ECR 85081	RDW 11/13/06	KH .XXXX	$\pm .0005$		MAT'L				FMF	
REVISION				BY & DATE	CHK	ANG	$\pm 1/2'$	FINISH		PREV	
THIS DRAWING IN DESIGN AND DETAIL IS OUR PROPERTY AND MUST NOT BE USED EXCEPT IN CONNECTION WITH OUR WORK ALL RIGHTS OF DESIGN AND INVENTION ARE RESERVED THIS IS AN ELECTRONICALLY GENERATED DOCUMENT - DO NOT SCALE THIS PRINT						RFP		CAD FILE	OL132107	SIZE	DRAWING NO.
						DIST				B	OL132107
											REV. 04

VIEW FROM OUTSIDE OF MOTOR AT SWITCH END.



\* THIS LEAD MAY BE WHITE

## LINE LEADS

ROTATION  
FACING  
LEAD END

L1

L2

C.C.W.


T1,T8

T4,T5

C.W.

T1,T5

T4,T8

				TOLERANCES UNLESS SPECIFIED		 <b>Regal</b> Beloit America, Inc.	DRAWN ADH 02/19/74		
				DEC.	INCHES		CHK WRK 02/20/74		
							APPD JCW 02/20/74		
21	LOGO UPDATED FROM LEESON TO MARATHON	AS 07/03/19	AS	.X	±.1	TITLE EXTERNAL WIRING DIAGRAM TYPE "K" W/O PROTECTOR	SCALE 1=1		
20	ALTERNATE T5 LEAD MARKING WAS RED	RLW 7/22/02	KH	.XX	±.01		REF		
19	ADDED ALTERNATE T5 LEAD MARKING	RLW 5/31/02	KH	.XXX	±.005		FMF		
18	REDRAWN ON CAD	DBT 06/24/97		.XXXX	±.0005	MAT'L. DECAL – 004018	PREV		
NO.	REVISION	BY & DATE	CHK	ANG	±1/2"	FINISH			
THIS DRAWING IN DESIGN AND DETAIL IS OUR PROPERTY AND MUST NOT BE USED EXCEPT IN CONNECTION WITH OUR WORK ALL RIGHTS OF DESIGN AND INVENTION ARE RESERVED THIS IS AN ELECTRONICALLY GENERATED DOCUMENT – DO NOT SCALE THIS PRINT			RFP		CAD FILE 00501801		SIZE	DRAWING NO.	REV.
			DIST BRF–NLV				A	005018–01	21



Regal Beloit America, Inc.