

# PRODUCT INFORMATION PACKET

Model No: 132103.00

Catalog No: 132103.00

3HP..3500RPM.182.TEFC.115/208-230V.1PH.60HZ.CONT.NOT.40C.1.15SF.RIGID C..C182K34FK2A

Regal and are trademarks of Regal Rexnord Corporation or one of its affiliated companies.  
©2022 Regal Rexnord Corporation, All Rights Reserved. MC017097E



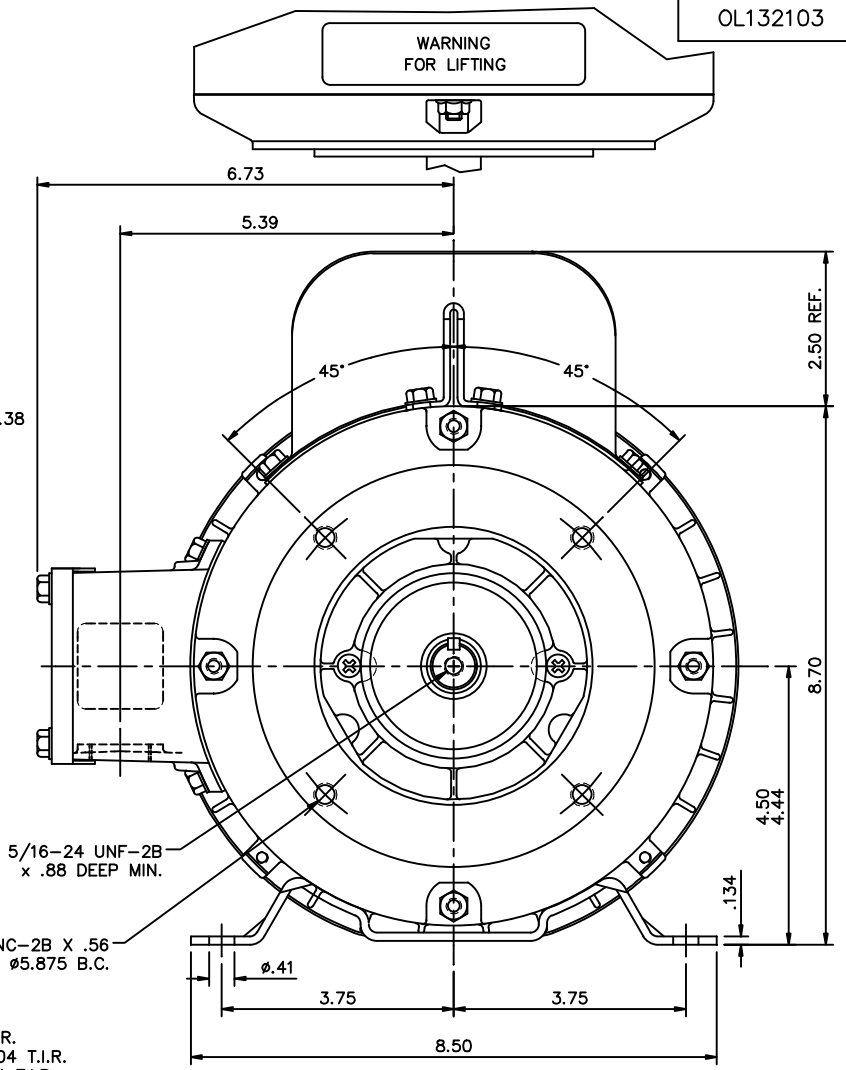
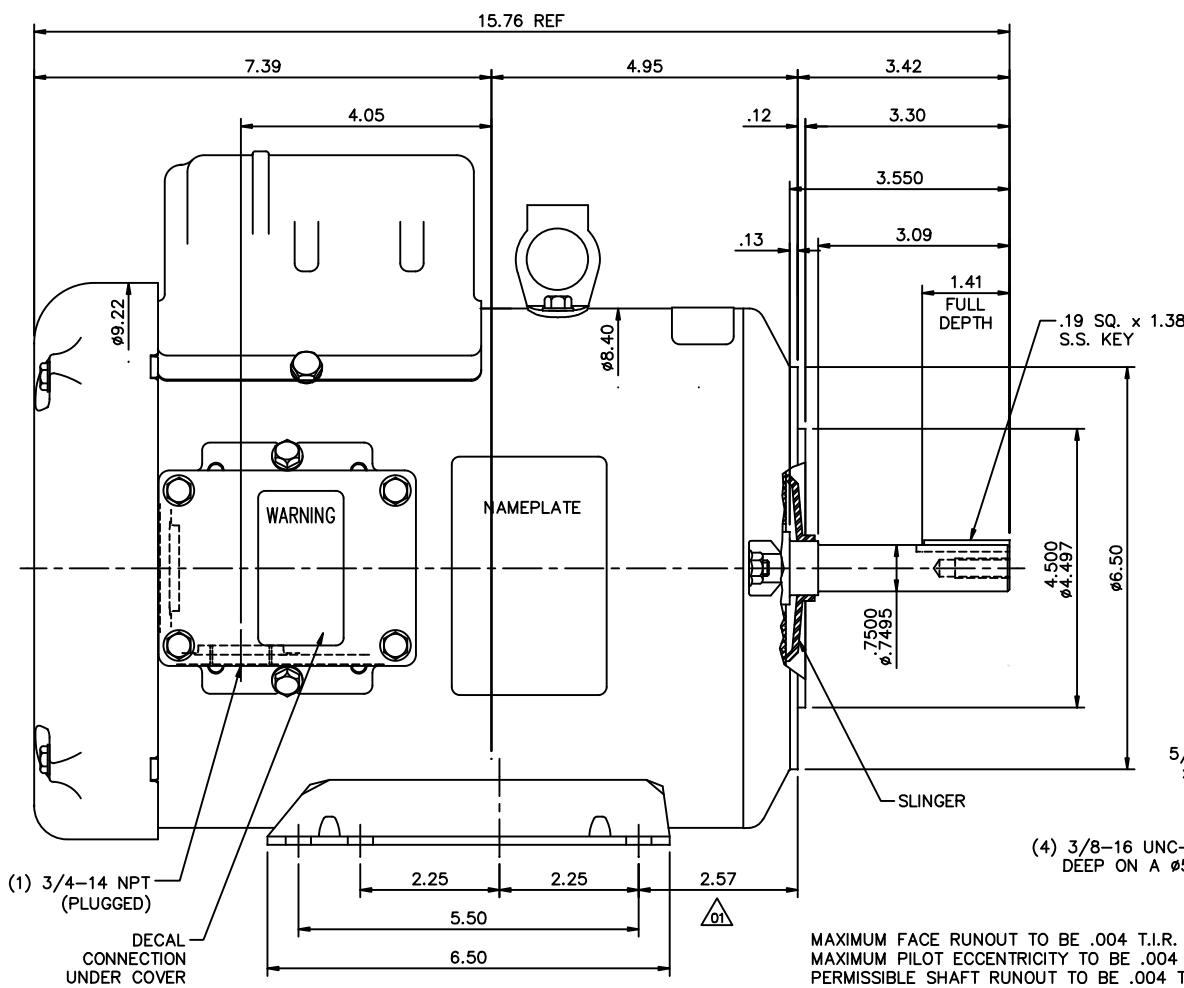
## Nameplate Specifications

Output HP	3 Hp	Output KW	2.2 kW
Frequency	60 Hz	Voltage	115/208-230 V
Current	26.8/14.4-13.4 A	Speed	3500 rpm
Service Factor	1.15	Phase	1
Efficiency	80 %	Power Factor	89
Duty	Continuous	Insulation Class	F
Design Code	L	KVA Code	G
Frame	182TCY	Enclosure	Totally Enclosed Fan Cooled
Thermal Protection	No Protection	Ambient Temperature	40 °C
Drive End Bearing Size	6207	Opp Drive End Bearing Size	6205
UL	Recognized	CSA	Y
CE	N	IP Code	43
Number of Speeds	1		

## Technical Specifications

Electrical Type	Capacitor Start Capacitor Run	Starting Method	Across The Line
Poles	2	Rotation	Selective Counterclockwise
Resistance Main	.12 Ohms	Mounting	Rigid Base
Motor Orientation	Horizontal	Drive End Bearing	Ball
Opp Drive End Bearing	Ball	Frame Material	Rolled Steel
Shaft Type	Single Special Extension	Shaft Diameter	0.750 in
Assembly/Box Mounting	F1 ONLY		
Connection Drawing	005054.01	Outline Drawing	OL132103

This is an uncontrolled document once printed or downloaded and is subject to change without notice. Date Created:11/01/2022

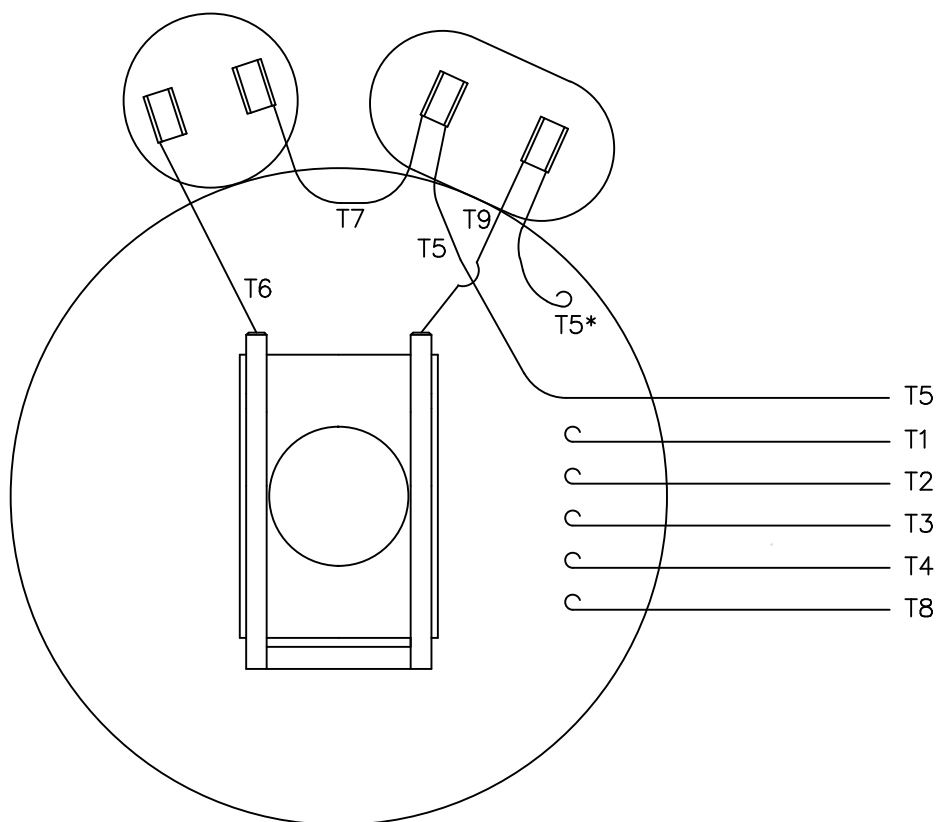


MAXIMUM FACE RUNOUT TO BE .004 T.I.R.  
MAXIMUM PILOT ECCENTRICITY TO BE .004 T.I.R.  
PERMISSIBLE SHAFT RUNOUT TO BE .004 T.I.R.

**SPECIAL FEATURES:**  
1) GASKETS THROUGHOUT  
2) STAINLESS STEEL SHAFT, HARDWARE & NAMEPLATE

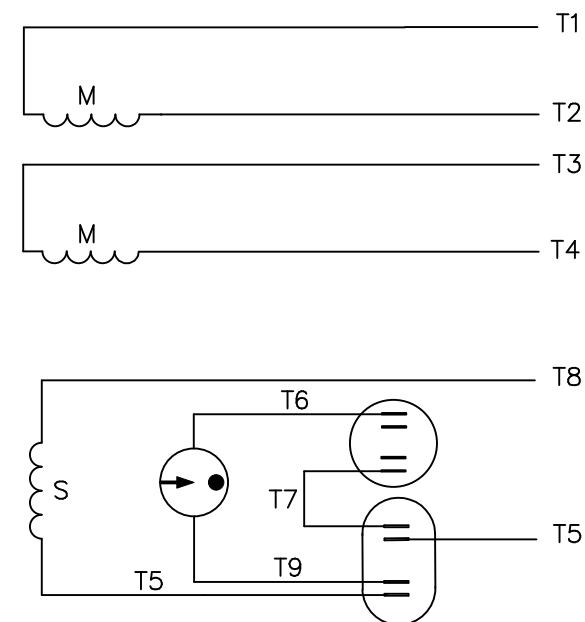
				TOLERANCES UNLESS SPECIFIED		<div>LEESON</div> ELECTRIC MOTORS GEARMOTORS AND DRIVES	DRAWN LST 6/15/06	
				DEC.	INCHES		CHK	RW 6/19/06
03	UPDATED PER MT2 CONVERSION	ISAAC 10-0590	LST 2/5/10	.XX	±.03	TITLE OUTLINE - 182TCY FRAME T.E.F.C. - RIGID "C" FACE	APPD	KH 6/19/06
02	REMOVED C'BOX DRAIN SCREW PER ECR 91491	JWM 11/7/07		.XXX	±.005		SCALE	1=2
01	BASE LOC WAS 2.75 PER ECO 07-165	RDW 1/16/07	KH	.XXXX	±.0005		REF	PR030614
NO. REVISION				CHK	ANG	±1/2"	FINISH	PREV
THIS DRAWING IN DESIGN AND DETAIL IS OUR PROPERTY AND MUST NOT BE USED EXCEPT IN CONNECTION WITH OUR WORK. ALL RIGHTS OF DESIGN AND INVENTION ARE RESERVED. THIS IS AN ELECTRONICALLY GENERATED DOCUMENT - DO NOT SCALE THIS PRINT						RFP	CAD FILE	OL132103
						DIST	SIZE	DRAWING NO.
							B	OL132103
								REV. 03

VIEW FROM OUTSIDE OF MOTOR AT SWITCH END.



\* THIS LEAD MAY BE WHITE

## LINE LEADS



	ROTATION FACING LEAD END	L1	L2	JOIN
HIGH VOLT	C.C.W.	T1	T4 T5	T2,T3 T8
	C.W.	T1	T4 T8	T2,T3 T5
LOW VOLT	C.C.W.	T1 T3,T8	T2,T4 T5	
	C.W.	T1,T3 T5	T2,T4 T8	

TOLERANCES  
UNLESS SPECIFIED

DEC. INCHES

.X ±.1

.XX ±.01

.XXX ±.005

.XXXX ±.0005

ANG ±1/2"

ELECTRIC MOTORS  
GEARMOTORS  
AND DRIVES

DRAWN JRW 09/27/74

CHK TEM

APPD 10/11/74

SCALE 1=1

REF A-005053

FMF W-K6343

PREV

11 ALTERNATE T5 LEAD MARKING WAS RED

RLW 8/6/02

.XX ±.01

10 ADDED ALTERNATE T5 LEAD MARKING

RLW 6/5/02

KH .XXX ±.005

09 REDRAWN TO CAD

DBT 05/28/97

.XXXX ±.0005

NO. REVISION

BY &amp; DATE

CHK ANG ±1/2"

TITLE

EXT. WIRING DIAGRAM  
TYPE "K" W/O PROTECTOR

MAT'L.

DECAL-004012

FINISH

THIS DRAWING IN DESIGN AND DETAIL IS OUR PROPERTY AND MUST NOT BE USED EXCEPT  
IN CONNECTION WITH OUR WORK ALL RIGHTS OF DESIGN AND INVENTION ARE RESERVED  
THIS IS AN ELECTRONICALLY GENERATED DOCUMENT - DO NOT SCALE THIS PRINT

RFP

CAD FILE 00505401

SIZE

A

DRAWING NO.

005054-01

REV.

11