

# PRODUCT INFORMATION PACKET



Model No: 132057.00

Catalog No: 132057.00

3HP..1740RPM.184.DP.115/230V.1PH.60HZ.CONT.NOT.40C.1.15SF.RIGID..5K675BB

Regal and Leeson are trademarks of Regal Rexnord Corporation or one of its affiliated companies.

©2023 Regal Rexnord Corporation, All Rights Reserved. MC017097E





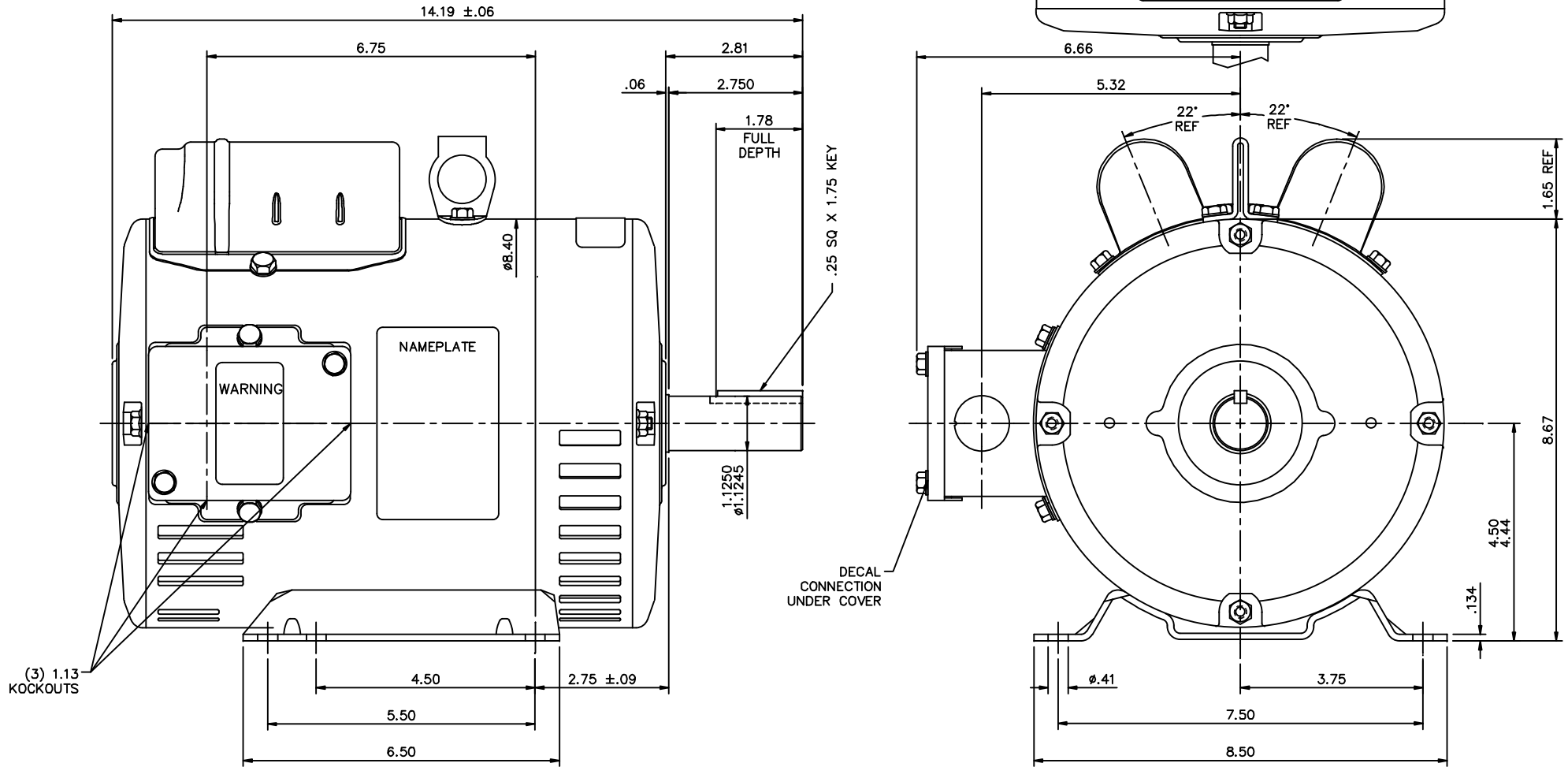
### Nameplate Specifications

Phase	1	Output HP	3 Hp
Output KW	2.24 kW	Voltage	115/230 V
Speed	1740 rpm	Service Factor	1.15
Frame	184T	Enclosure	Drip Proof
Thermal Protection	No Protection	Efficiency	75.5 %
Ambient Temperature	40 °C	Frequency	60 Hz
Current	33.8/16.9 A	Power Factor	76
Duty	Continuous	Insulation Class	F
Design Code	L	KVA Code	J
Drive End Bearing Size	6206	Opp Drive End Bearing Size	6205
UL	Recognized	CSA	Y
CE	N	IP Code	22
Number of Speeds	1		

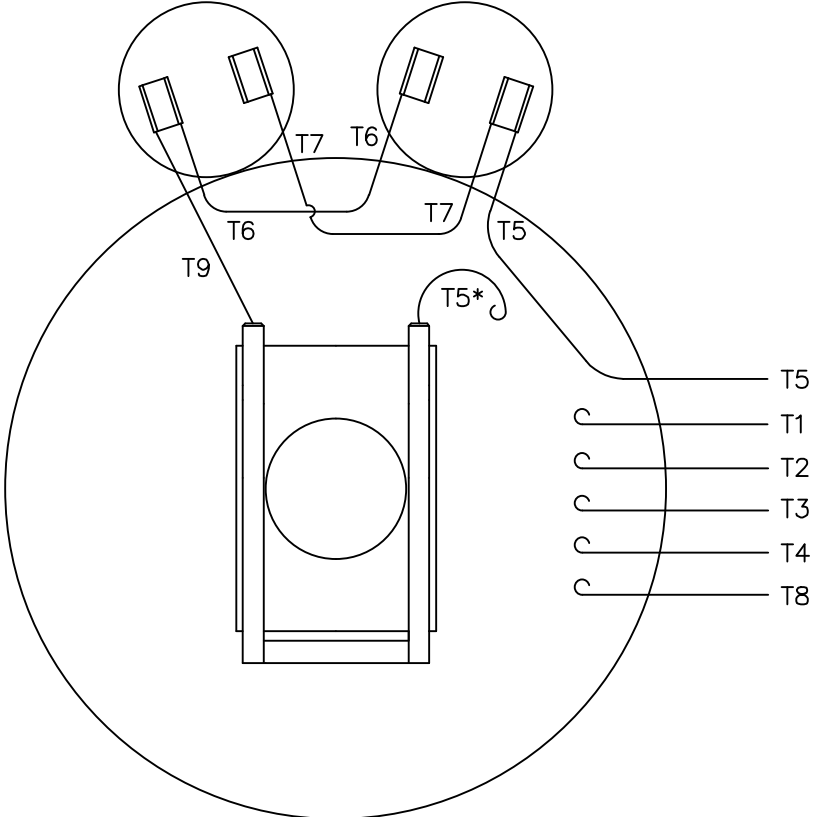
### Technical Specifications

Electrical Type	Capacitor Start Induction Run	Starting Method	Across The Line
Poles	4	Rotation	Selective Counterclockwise
Resistance Main	.744 Ohms	Mounting	Rigid Base
Motor Orientation	Horizontal	Drive End Bearing	Ball
Opp Drive End Bearing	Ball	Frame Material	Rolled Steel
Shaft Type	T	Assembly/Box Mounting	F1 ONLY
Outline Drawing	5K675BBOD	Connection Drawing	5K675BBWD

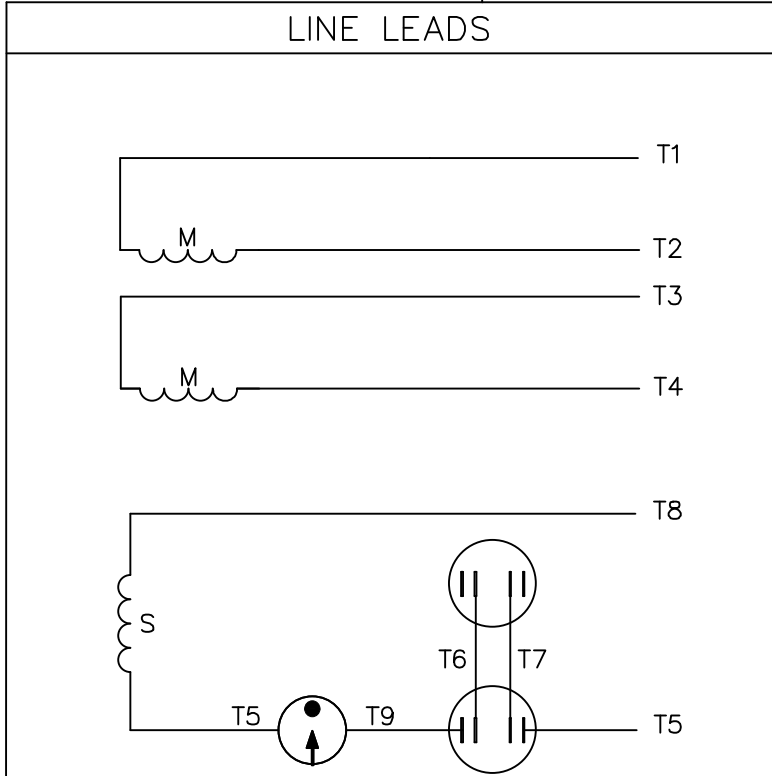
This is an uncontrolled document once printed or downloaded and is subject to change without notice. Date Created:08/24/2023



				TOLERANCES UNLESS SPECIFIED		Dayton <sup>®</sup> Dayton Electric Mfg. Co. Lake Forest IL 60045 USA	DRAWN VS 02/20/09	
				DEC.	INCHES		CHK	
				.X	±.1	TITLE OUTLINE - 180T FRAME DRIP PROOF - RIGID	APPD	VS 02/20/09
				.XX	±.03		KH	02/20/09
02	REVISED GRAINGER ADDRESS AS PER IS12-2651	UD 09/06/12	PI	.XXX	±.005		SCALE	1-2
01	UPDATED PER MT2 CONVERSION	LST 5/26/10		.XXXX	±.0005		REF	03550400
NO.	REVISION	BY & DATE	CHK	ANG	FINISH	MAT'L	FMF	132057
THIS DRAWING IN DESIGN AND DETAIL IS OUR PROPERTY AND MUST NOT BE USED EXCEPT IN CONNECTION WITH OUR WORK ALL RIGHTS OF DESIGN AND INVENTION ARE RESERVED THIS IS AN ELECTRONICALLY GENERATED DOCUMENT - DO NOT SCALE THIS PRINT						RFP	CAD FILE	5K675BB0D
						DIST	SIZE	DRAWING NO.
							B	5K675BB-OD
								02




VIEW FROM OUTSIDE OF MOTOR AT SWITCH END.



\*NOTE: OPPOSITE ROTATION WHEN VIEWED FROM LEAD END

	ROTATION FACING SHAFT END*	L1	L2	JOIN
HIGH VOLT	C.W.	T1	T4 T5	T2,T3 T8
	C.C.W.	T1	T4 T8	T2,T3 T5
LOW VOLT	C.W.	T1,T3 T8	T2,T4 T5	-----
	C.C.W.	T1,T3 T5	T2,T4 T8	-----

\* THIS LEAD MAY BE WHITE

				TOLERANCES UNLESS SPECIFIED		 Dayton <sup>®</sup> Electric Mfg. Co. Lake Forest IL 60045 USA	DRAWN KA 2/20/09		
				DEC.	INCHES		CHK		
				.X	±.1		APPD KJH 2/20/09		
				.XX	±.01		SCALE 1=1		
				.XXX	±.005		REF 005062-11WD		
01	REVISED GRAINGER ADDRESS AS PER IS12-2651	UD 09/06/12	PI	.XXXX	±.0005	MAT'L. DECAL - 081182		FMF	
NO.	REVISION	BY & DATE	CHK	ANG	±1/2"	FINISH		PREV	
THIS DRAWING IN DESIGN AND DETAIL IS OUR PROPERTY AND MUST NOT BE USED EXCEPT IN CONNECTION WITH OUR WORK ALL RIGHTS OF DESIGN AND INVENTION ARE RESERVED THIS IS AN ELECTRONICALLY GENERATED DOCUMENT - DO NOT SCALE THIS PRINT			RFP		CAD FILE 5K675BBWD		SIZE	DRAWING NO.	REV.
			DIST				A	5K675BB-WD	01