

PRODUCT INFORMATION PACKET

Model No: 132010.00

Catalog No: 132010.00

3HP.2.2kW.1440RPM.182.IP22.110/220V.1PH.50HZ.CONT.NOT.40C.1.15SF.C FACE..C182C14DC1A

Regal and are trademarks of Regal Rexnord Corporation or one of its affiliated companies.
©2022 Regal Rexnord Corporation, All Rights Reserved. MC017097E



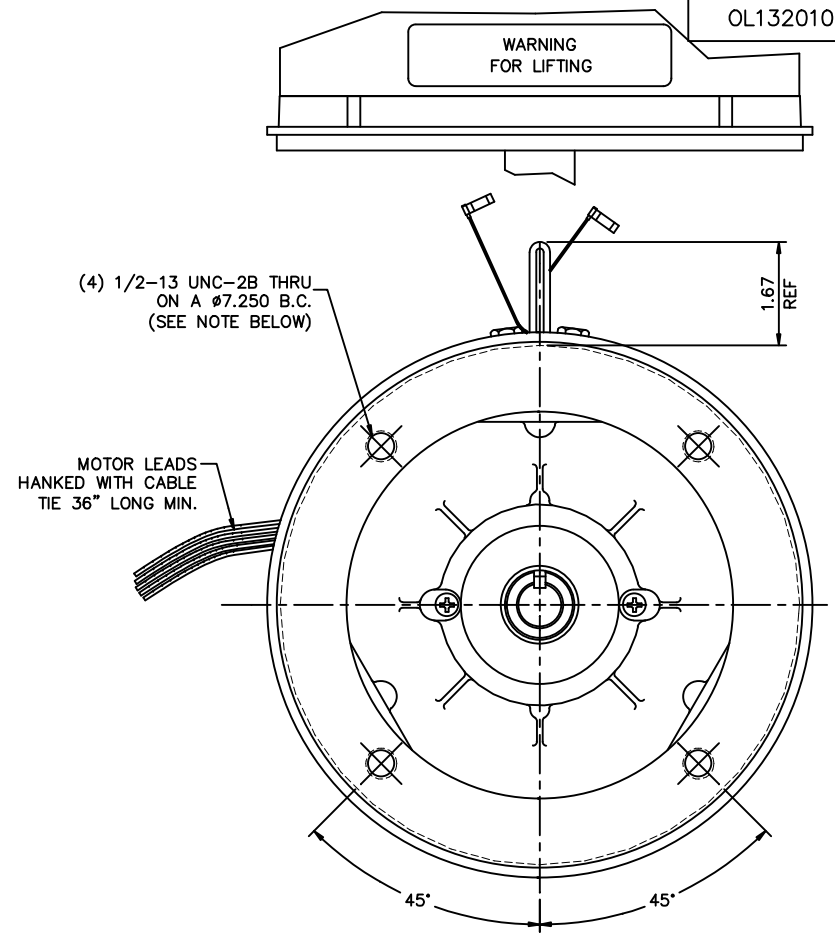
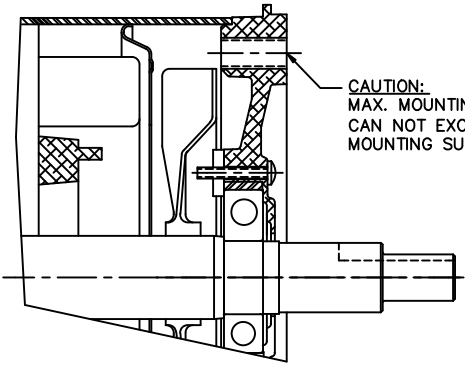
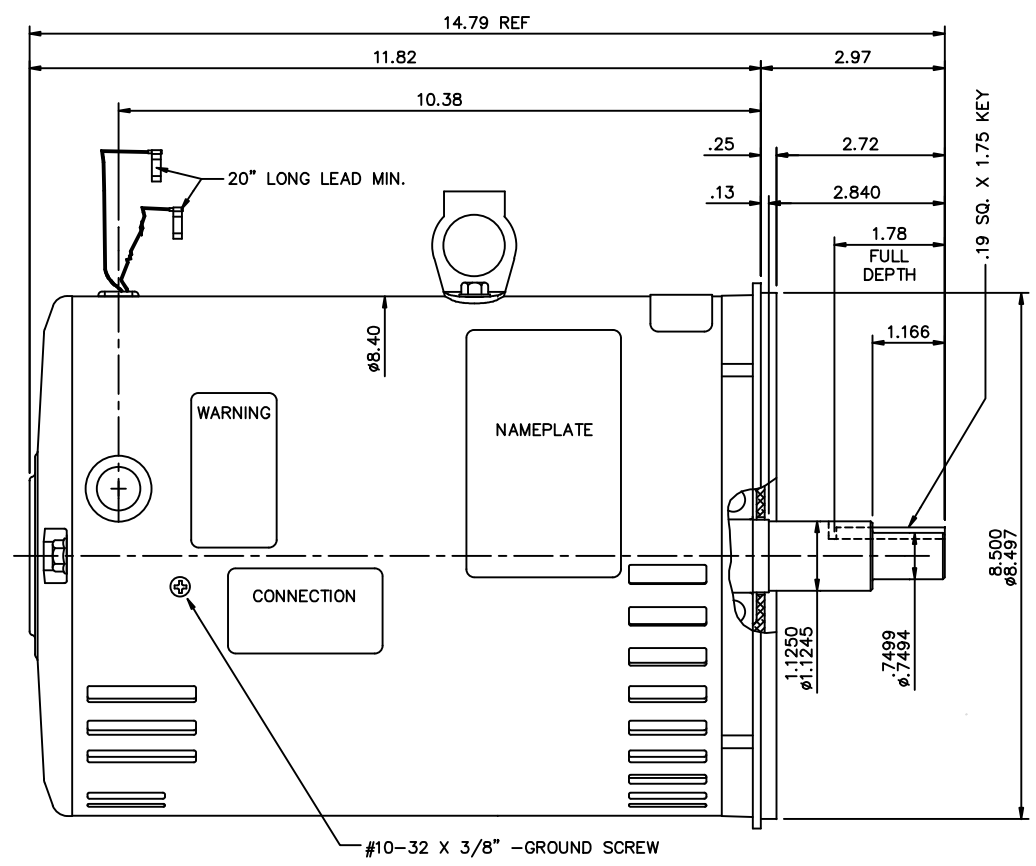
Nameplate Specifications

Output HP	3 Hp	Output KW	2.2 kW
Frequency	50 Hz	Voltage	110/220 V
Current	33.6/16.8 A	Speed	1440 rpm
Service Factor	1.15	Phase	1
Efficiency	76 %	Power Factor	79
Duty	Continuous	Insulation Class	F
Design Code	NO DESIGN CODE	KVA Code	H
Frame	182TCZ	Enclosure	Drip Proof
Thermal Protection	No Protection	Ambient Temperature	40 °C
Drive End Bearing Size	6206	Opp Drive End Bearing Size	6205
UL	Recognized	CSA	Y
CE	Y	IP Code	22
Number of Speeds	1		


Technical Specifications

Electrical Type	Capacitor Start Induction Run	Starting Method	Across The Line
Poles	4	Rotation	Selective Counterclockwise
Resistance Main	.668 Ohms	Mounting	Round
Motor Orientation	Horizontal	Drive End Bearing	Ball
Opp Drive End Bearing	Ball	Frame Material	Rolled Steel
Shaft Type	Single Special Extension	Assembly/Box Mounting	F1 ONLY
Connection Drawing	005390.10	Outline Drawing	OL132010

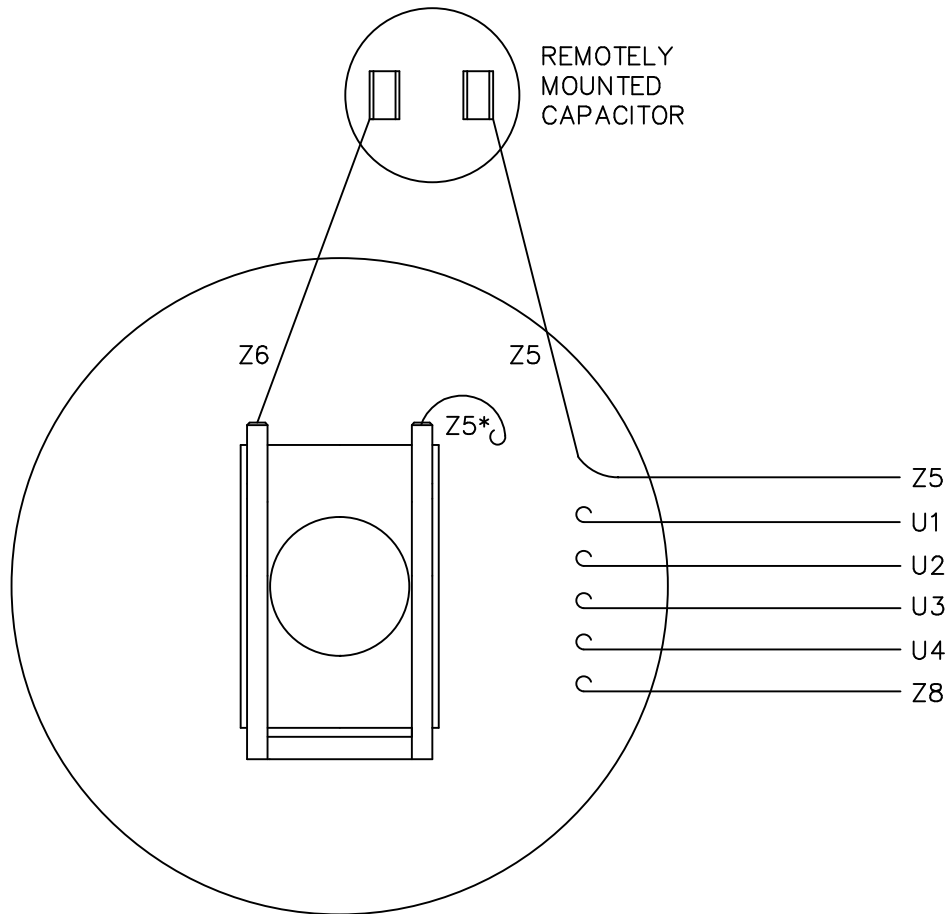
This is an uncontrolled document once printed or downloaded and is subject to change without notice. Date Created:11/01/2022



GASKETS THROUGHOUT
MAXIMUM FACE RUNOUT TO BE .004 T.I.R.
MAXIMUM PILOT ECCENTRICITY TO BE .004 T.I.R.
PERMISSIBLE SHAFT RUNOUT TO BE .002 T.I.R.

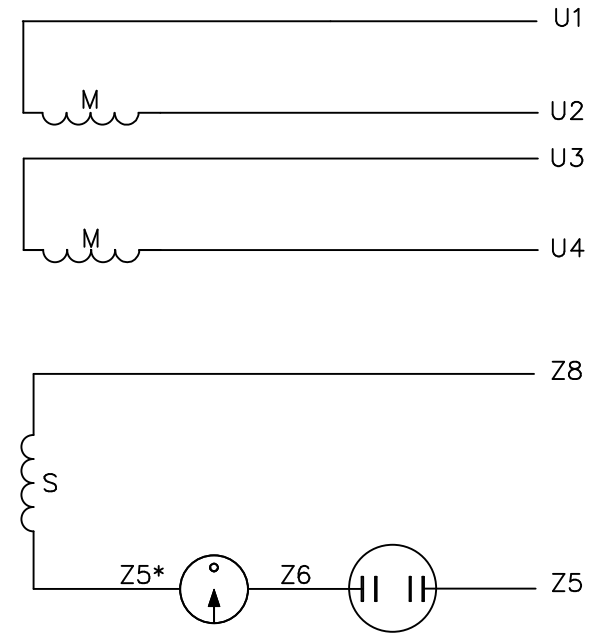
			TOLERANCES UNLESS SPECIFIED		 ELECTRIC MOTORS GEARMOTORS AND DRIVES	DRAWN LST 4/28/04	
			DEC.	INCHES		CHK RW 4/28/04	
			.X	±.1		APPD KH 4/28/04	
03	UPDATED PER MT2 CONVERSION ISAAC 10-0507	LST 2/2/10	.XX	±.03	TITLE OUTLINE-182TCZ FRAME DRIP PROOF- "C" FACE	SCALE 1=2	
02	CHANGED LEAD END TERMINALS TO FLAGS; ECR 85493	KLS 5/9/06	.XXX	±.005		REF	
01	REMOVED CAP. COVER, EXTENDED CAP. LEADS, REMOTE CAP. & GRND. SCREW WAS 1/4-20 PER ECO 04-1594	LST 8/26/04	.XXXX	±.0005		FMF	
NO.	REVISION	BY & DATE	CHK	ANG ±1/2"	FINISH	PREV	
THIS DRAWING IN DESIGN AND DETAIL IS OUR PROPERTY AND MUST NOT BE USED EXCEPT IN CONNECTION WITH OUR WORK ALL RIGHTS OF DESIGN AND INVENTION ARE RESERVED THIS IS AN ELECTRONICALLY GENERATED DOCUMENT - DO NOT SCALE THIS PRINT					RFP	CAD FILE OL132010	SIZE B
					DIST	DRAWING NO. OL132010	REV. 03

VIEW FROM OUTSIDE OF MOTOR AT SWITCH END.



CAUTION:
 "*" THIS LEAD MAY BE WHITE

LINE LEADS



	ROTATION FACING LEAD END	L1	L2	JOIN
HIGH VOLT	C.C.W.	U1	U4 Z5	U2,U3 Z8
	C.W.	U1	U4 Z8	U2,U3 Z5
LOW VOLT	C.C.W.	U1,U3 Z8	U2,U4 Z5	---
	C.W.	U1,U3 Z5	U2,U4 Z8	---

TOLERANCES
UNLESS SPECIFIED

DEC. INCHES

.X ±.1

.XX ±.01

.XXX ±.005

.XXXX ±.0005

ANG ±1/2"

ELECTRIC MOTORS
GEARMOTORS
AND DRIVES

DRAWN BJB 09/28/04

CHK

APPD

SCALE 1=1

REF 005005-09

FMF

PREV

TITLE
EXTERNAL WIRING DIAGRAM
TYPE "C" W/O PROTECTOR

MAT'L. DECAL - 080642

FINISH LEESON CANADA

NO. REVISION

BY & DATE

CHK

RFP

DIST

CAD FILE 00539010

SIZE

A

DRAWING NO.

005390-10

REV.

THIS DRAWING IN DESIGN AND DETAIL IS OUR PROPERTY AND MUST NOT BE USED EXCEPT
 IN CONNECTION WITH OUR WORK ALL RIGHTS OF DESIGN AND INVENTION ARE RESERVED
 THIS IS AN ELECTRONICALLY GENERATED DOCUMENT - DO NOT SCALE THIS PRINT

EC Declaration of Conformity

The undersigned representing
the manufacturer:

Regal Beloit America
100 East Randolph St.
Wausau, WI 54401

and the authorized representative
established within the Community:

Marathon Electric UK
6F Thistleton Road Ind. Estate
Market Overton
Oakham, Rutland LE15 7PP UK

are committed to providing customers with products that comply with applicable regulations and international protocols to which they are subject, including the requirements of the European Parliament Directive on the Harmonization of the laws relating to electrical equipment designed for use within certain voltage limits (2014/35/EU).

Regal Beloit America declares that the following product(s), to which this declaration relates, are in conformity with the relevant sections of the EC standards listed below.

This statement supersedes any statements previously issued pertaining to the product(s) listed below and is subject to change without notice.

Model No : 132010.00

(Model No. may contain prefix and/or suffix characters)

Catalog No : 132010.00

Rework No : N/A

Directives :

Low Voltage Directive 2014/35/EU

Harmonized Standards Used :

EN 60034-1: 2010 (IEC 60034-1: 2010)

EN 60034-5: 2001/A1:2007 (IEC 60034-5: 2000/A1:2006)

Authorized Representative:



Michael A. Logsdon
Vice President, Technology

Authorized Representative in the Community:



Julian Clark
Marketing Engineer

Created on 09/01/2022

CE 22