

PRODUCT INFORMATION PACKET

Model No: 132005.00

Catalog No: 132005.00

General Purpose Motor, 3 HP, 1 Ph, 60 Hz, 115/230 V, 1800 RPM, 182TCZ Frame, DP

Regal and are trademarks of Regal Rexnord Corporation or one of its affiliated companies.
©2022 Regal Rexnord Corporation, All Rights Reserved. MC017097E



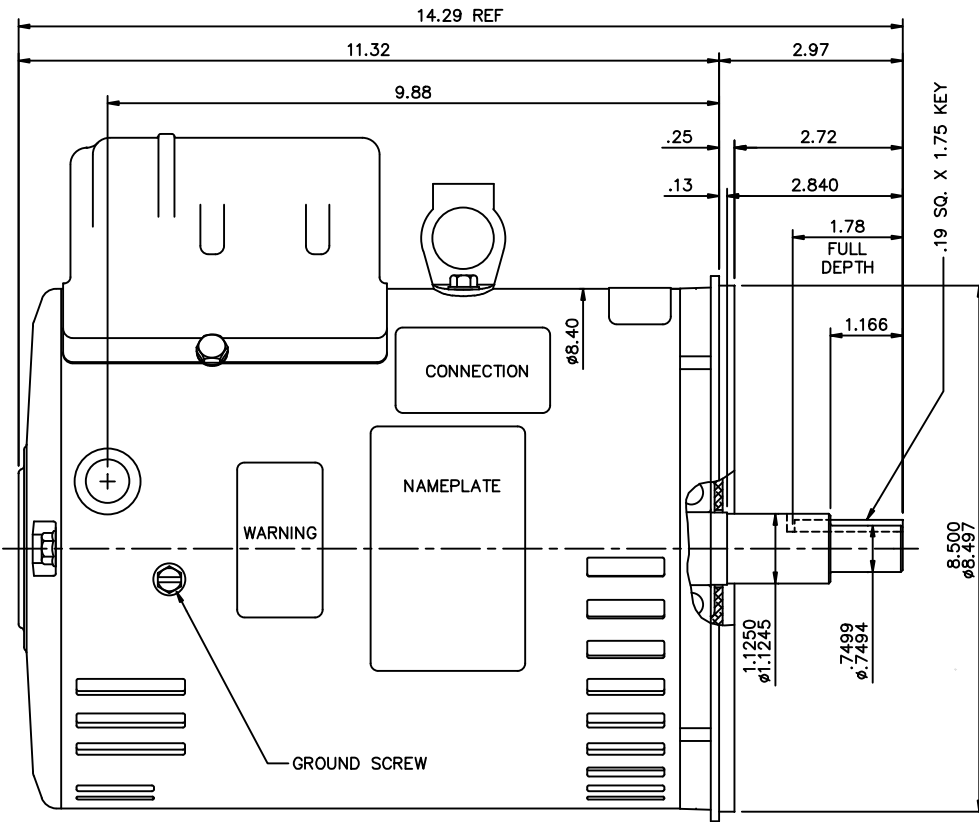
Nameplate Specifications

Output HP	3 Hp	Output KW	2.2 kW
Frequency	60 Hz	Voltage	115/230 V
Current	33.8/16.9 A	Speed	1740 rpm
Service Factor	1.15	Phase	1
Efficiency	75.5 %	Power Factor	76
Duty	Continuous	Insulation Class	F
Design Code	L	KVA Code	J
Frame	182TCZ	Enclosure	Drip Proof
Thermal Protection	No Protection	Ambient Temperature	40 °C
Drive End Bearing Size	6206	Opp Drive End Bearing Size	6205
UL	Recognized	CSA	Y
CE	N	IP Code	22
Number of Speeds	1		

Technical Specifications

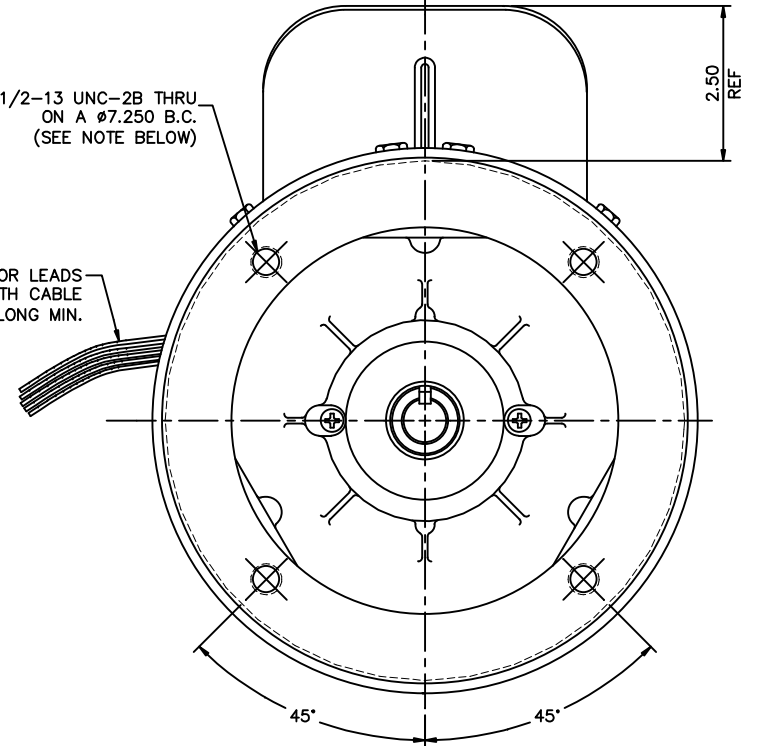
Electrical Type	Capacitor Start Induction Run	Starting Method	Across The Line
Poles	4	Rotation	Selective Counterclockwise
Resistance Main	.744 Ohms	Mounting	Round
Motor Orientation	Horizontal	Drive End Bearing	Ball
Opp Drive End Bearing	Ball	Frame Material	Rolled Steel
Shaft Type	Single Special Extension	Shaft Diameter	1.125 in
Assembly/Box Mounting	F1 ONLY		
Connection Drawing	005062.01	Outline Drawing	OL132005

This is an uncontrolled document once printed or downloaded and is subject to change without notice. Date Created:11/01/2022

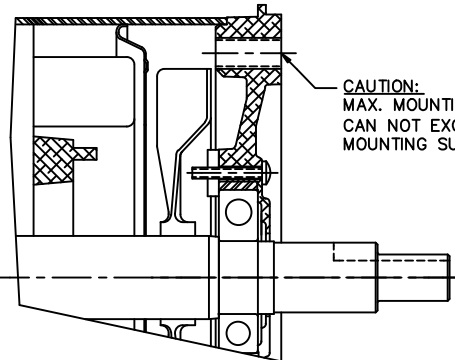


(4) 1/2-13 UNC-2B THRU ON A Ø7.250 B.C. (SEE NOTE BELOW)


MOTOR LEADS HANKED WITH CABLE TIE 36" LONG MIN.



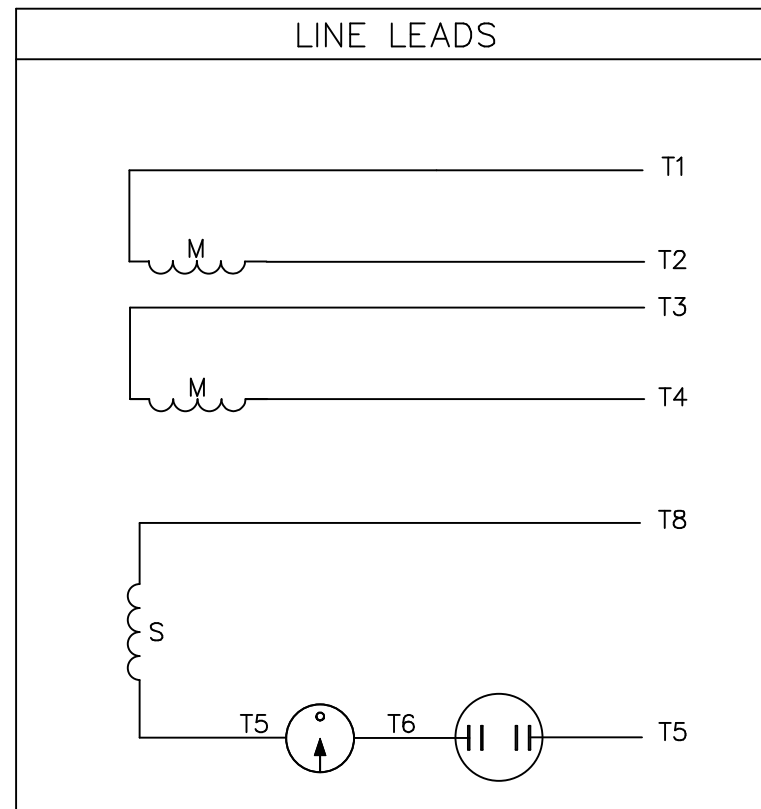
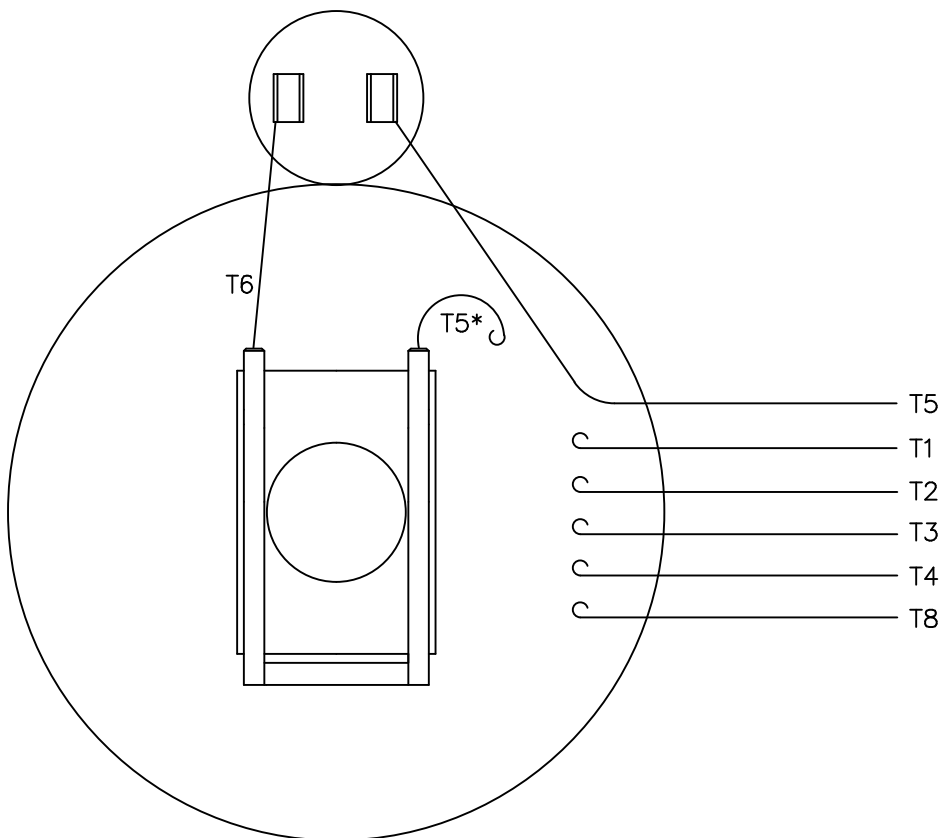
GASKETS THROUGHOUT
 MAXIMUM FACE RUNOUT TO BE .004 T.I.R.
 MAXIMUM PILOT ECCENTRICITY TO BE .004 T.I.R.
 PERMISSIBLE SHAFT RUNOUT TO BE .002 T.I.R.



CAUTION:
 MAX. MOUNTING BOLT LENGTH CAN NOT EXCEED 1.00" FROM "C" FACE MOUNTING SURFACE

				TOLERANCES UNLESS SPECIFIED		 ELECTRIC MOTORS GEARMOTORS AND DRIVES		DRAWN LST 3/2/04			
				DEC.	INCHES			CHK	RW 3/4/04		
				.X	±.1			APPD	KH 3/4/04		
02	CHANGED NAMEPLATE FOR MT2 TO 081285.02	LST	1/23/09	.XX	±.03	TITLE	OUTLINE-182TCZ FRAME DRIP PROOF- "C" FACE	SCALE	1=2		
01	RELOCATED LEAD HOLE	LST	4/27/04	.XXX	±.005	MAT'L		REF	035371		
				.XXXX	±.0005			FMF			
NO.	REVISION	BY & DATE	CHK	ANG	±1/2"	FINISH		PREV			
THIS DRAWING IN DESIGN AND DETAIL IS OUR PROPERTY AND MUST NOT BE USED EXCEPT IN CONNECTION WITH OUR WORK ALL RIGHTS OF DESIGN AND INVENTION ARE RESERVED THIS IS AN ELECTRONICALLY GENERATED DOCUMENT - DO NOT SCALE THIS PRINT						RFP	CAD FILE	OL132005	SIZE	DRAWING NO.	REV.
						DIST		B	OL132005	02	

VIEW FROM OUTSIDE OF MOTOR AT SWITCH END.



	ROTATION FACING LEAD END	L1	L2	JOIN
HIGH VOLT	C.C.W.	T1	T4 T5	T2, T3 T8
	C.W.	T1	T4 T8	T2, T3 T5
LOW VOLT	C.C.W.	T1, T3 T8	T2, T4 T5	---
	C.W.	T1, T3 T5	T2, T4 T8	---

* THIS LEAD MAY BE WHITE

		TOLERANCES UNLESS SPECIFIED		LEESON ELECTRIC MOTORS GEARMOTORS AND DRIVES		DRAWN JRW 12/05/74			
		DEC.	INCHES			CHK			
			.X	±.1			APPD T.E.M.		
12	ALTERNATE T5 LEAD MARKING WAS RED	RLW 8/6/02	.XX	±.01	TITLE EXT. WIRING DIAGRAM TYPE "C" W/O PROTECTOR		SCALE 1=1		
11	ADDED ALTERNATE T5 LEAD MARKING	RLW 5/31/02	KH .XXX	±.005			REF A-005061		
10	UPDATED TO CURRENT STANDARDS	DBT 06/09/97	.XXXX	±.0005	MAT'L. DECAL - 004012	FMF			
NO.	REVISION	BY & DATE	CHK	ANG	±1/2"	FINISH	PREV		
THIS DRAWING IN DESIGN AND DETAIL IS OUR PROPERTY AND MUST NOT BE USED EXCEPT IN CONNECTION WITH OUR WORK ALL RIGHTS OF DESIGN AND INVENTION ARE RESERVED THIS IS AN ELECTRONICALLY GENERATED DOCUMENT - DO NOT SCALE THIS PRINT				RFP	CAD FILE	00506201	SIZE	DRAWING NO.	REV.
				DIST	NLV		A	005062-01	12