

PRODUCT INFORMATION PACKET

Model No: 132004.00

Catalog No: 132004.00

HP.2.2kW.1725/1425RPM.182.IP22.220/380/440V.3PH.60/50HZ.CONT.NOT.40C.1.15/1.15SF.C FACE..C182T17DC2
7A

Regal and are trademarks of Regal Rexnord Corporation or one of its affiliated companies.
©2022 Regal Rexnord Corporation, All Rights Reserved. MC017097E



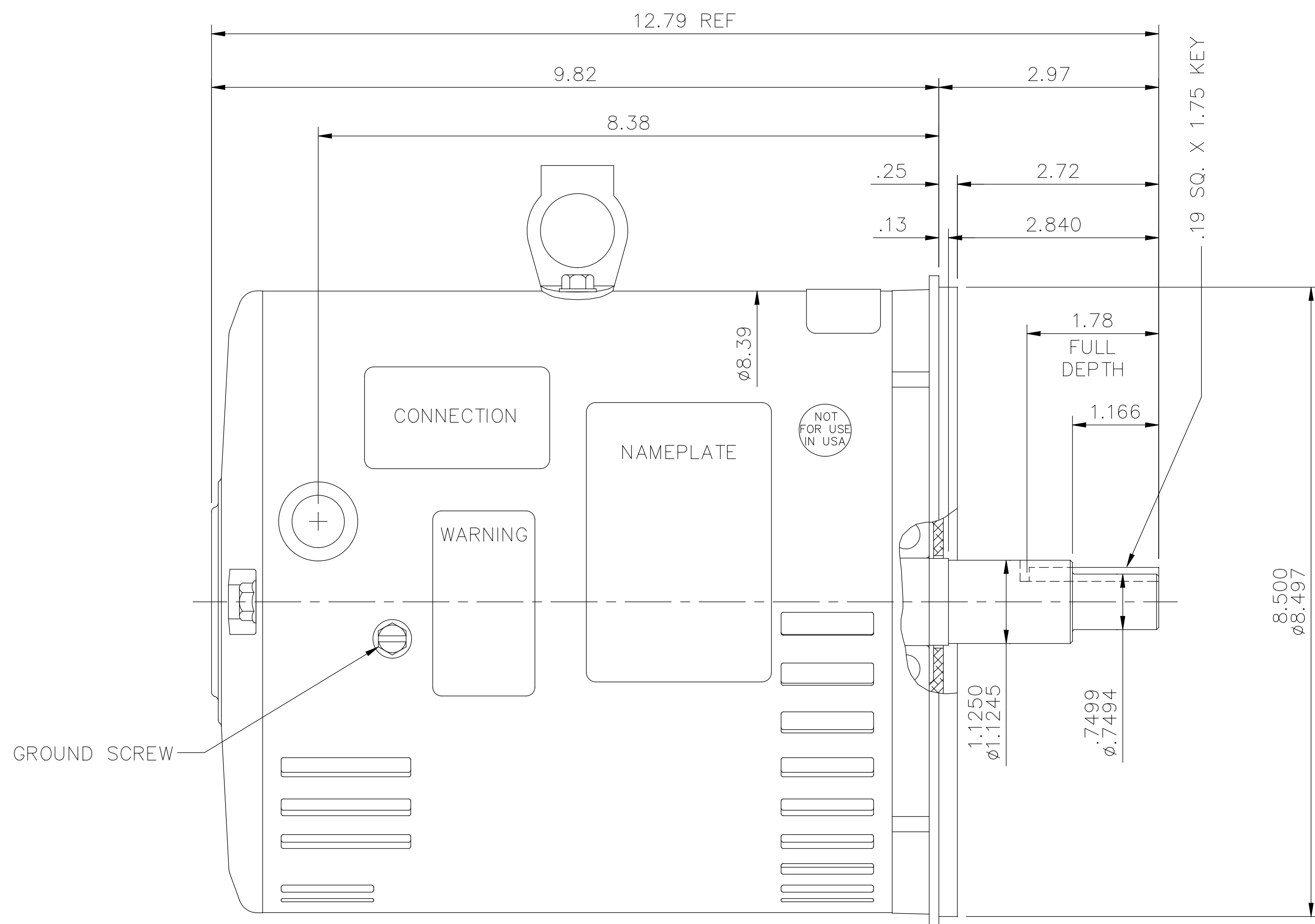
Nameplate Specifications

| | | | |
|------------------------|---------------|----------------------------|---------------|
| Output HP | 3 Hp | Output KW | 2.2 kW |
| Frequency | 60 Hz | Voltage | 220/380/440 V |
| Current | 8.0/4.6/4.0 A | Speed | 1725 rpm |
| Service Factor | 1.15 | Phase | 3 |
| Duty | 45 MINUTE | Insulation Class | F |
| Design Code | B | KVA Code | J |
| Frame | 182TCZ | Enclosure | Drip Proof |
| Thermal Protection | No Protection | Ambient Temperature | 40 °C |
| Drive End Bearing Size | 6206 | Opp Drive End Bearing Size | 6205 |
| UL | Recognized | CSA | Y |
| CE | Y | IP Code | 22 |
| Number of Speeds | 1 | | |

Technical Specifications

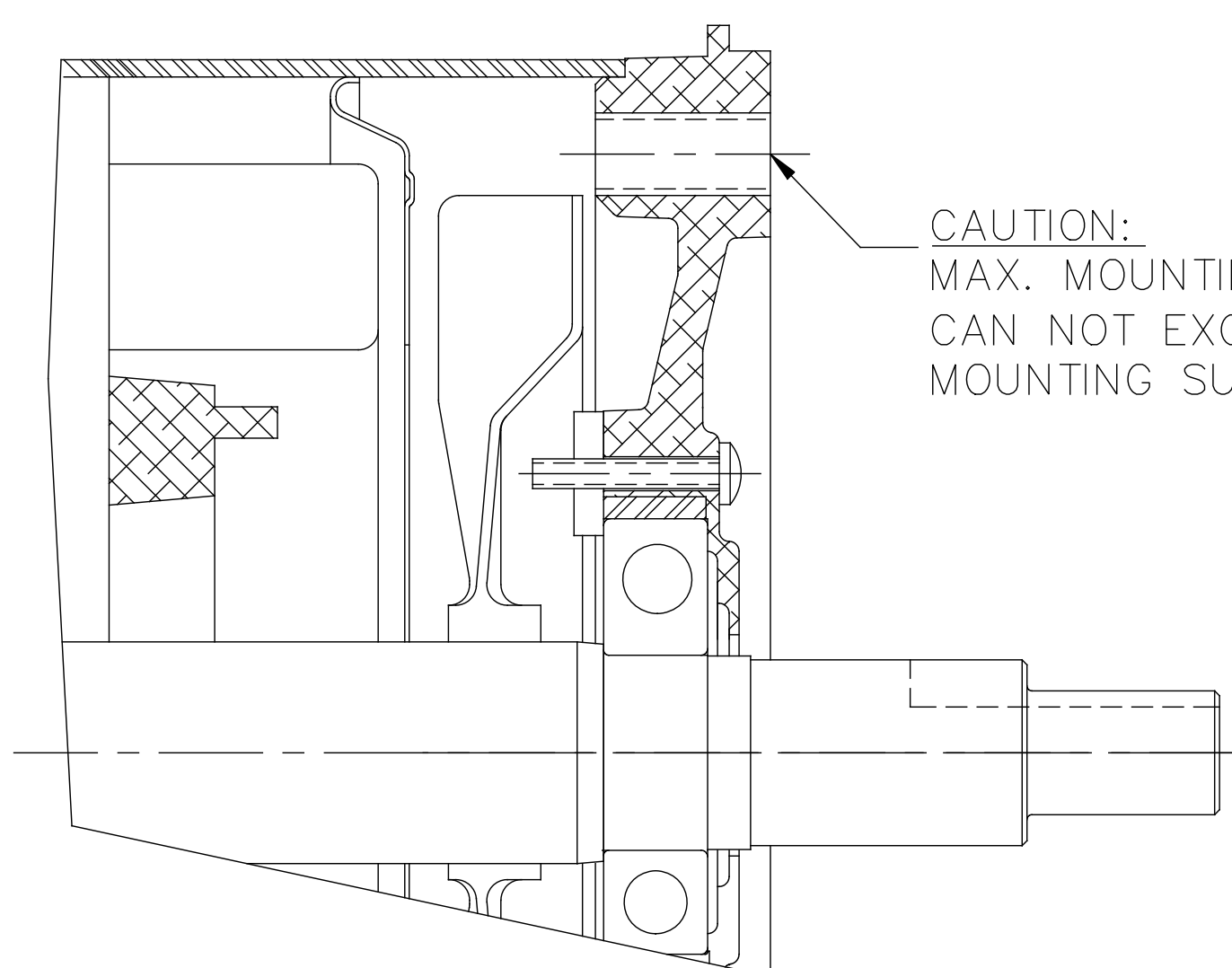
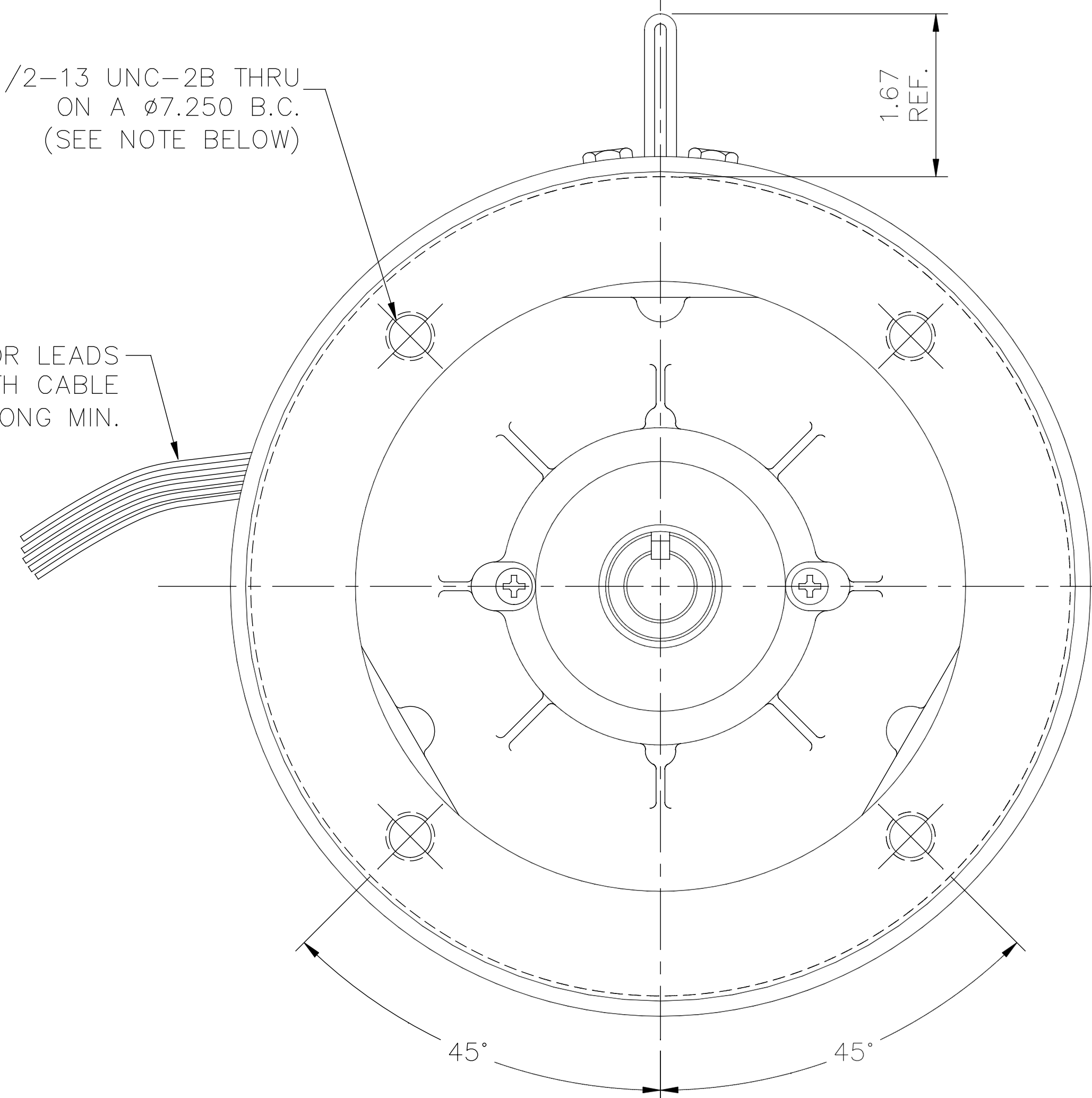
| | | | |
|-----------------------|-----------------------------|-----------------------|-----------------|
| Electrical Type | Squirrel Cage Induction Run | Starting Method | Across The Line |
| Poles | 4 | Rotation | Reversible |
| Resistance Main | 1.5 Ohms | Mounting | Round |
| Motor Orientation | Horizontal | Drive End Bearing | Ball |
| Opp Drive End Bearing | Ball | Frame Material | Rolled Steel |
| Shaft Type | Single Special Extension | Assembly/Box Mounting | F1 ONLY |
| Outline Drawing | OL132004 | Connection Drawing | 005381.01 |

This is an uncontrolled document once printed or downloaded and is subject to change without notice. Date Created:11/01/2022



(4) 1/2-13 UNC-2B THRU ON A Ø7.250 B.C. (SEE NOTE BELOW)

MOTOR LEADS HANKED WITH CABLE TIE 36" LONG MIN.



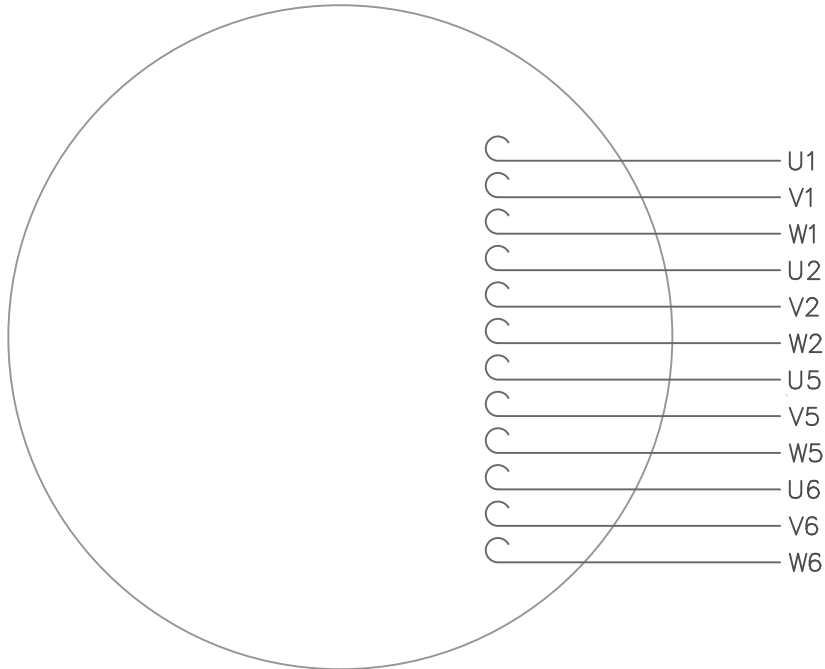
CAUTION: MAX. MOUNTING BOLT LENGTH CAN NOT EXCEED 1.00" FROM "C" FACE MOUNTING SURFACE

GASKETS THROUGHOUT
 MAXIMUM FACE RUNOUT TO BE .004 T.I.R.
 MAXIMUM PILOT ECCENTRICITY TO BE .004 T.I.R.
 PERMISSIBLE SHAFT RUNOUT TO BE .002 T.I.R.

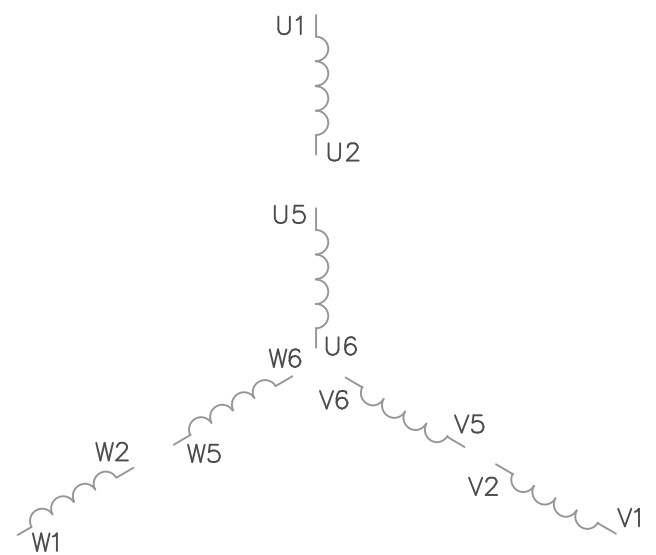
ORACLE REV 003

| NO. | REVISION | BY & DATE | CHK | ANG | TOLERANCES UNLESS SPECIFIED | | TITLE | DRAWN | LST | | | |
|----------------------------------------------------------------------------------------------------------------------------------------------------------------------------------------------------------------------------------|----------------------------------------------|-------------|-------|--------|-----------------------------|--------|----------------------------------------------------------------------------------------|----------|----------|--------|-------------|------|
| | | | | | DEC. | INCHES | | | | | | |
| E | ADDED "NOT FOR USE IN USA" DECAL ECO 0102230 | GWS 5/13/16 | .XX | ±.03 | .X | ±.1 | ELECTRIC MOTORS GEARMOTORS AND DRIVES OUTLINE- 182TCZ FRAME DRIP PROOF- "C" FACE | LST | 3/5/04 | | | |
| D | UPDATED PER MT2 CONVERSION ISAAC 10-0507 | LST 2/2/10 | .XXX | ±.005 | | | | CHK | RW | 3/9/04 | | |
| C | RELOCATED LEAD HOLE | LST 4/27/04 | .XXXX | ±.0005 | | | | APPD | KH | 3/9/04 | | |
| | | | | | | | MAT'L. | SCALE | 1=2 | | | |
| | | | | | | | FINISH | REF | PR040094 | | | |
| | | | | | | | | FMF | | | | |
| | | | | | | | | PREV | | | | |
| THIS DRAWING IN DESIGN AND DETAIL IS OUR PROPERTY AND MUST NOT BE USED EXCEPT IN CONNECTION WITH OUR WORK ALL RIGHTS OF DESIGN AND INVENTION ARE RESERVED THIS IS AN ELECTRONICALLY GENERATED DOCUMENT - DO NOT SCALE THIS PRINT | | | | | | | RFP | CAD FILE | OL132004 | SIZE | DRAWING NO. | REV. |
| | | | | | | | DIST | | | B | OL132004 | E |

VIEW FROM OUTSIDE OF MOTOR AT SWITCH END.



LINE LEADS



| VOLTAGE | L1 | L2 | L3 | JOIN |
|----------------|----------------|----------------|----------------|-------------------------------|
| (2Δ) LOW | U1,W2 U5,W6 | V1,U2 V5,U6 | W1,V2 W5,V6 | ---- |
| (2Y) MEDIUM | U1,U5 | V1,V5 | W1,W5 | (U2,V2,W2) (U6,V6,W6) |
| (1Δ) HIGH | U1,W6 | V1,U6 | W1,V6 | (U2,U5) (V2,V5) (W2,W5) |

| | | | | | |
|-----|------------------------------|-----|----------|---------------------------------------|---------|
| | | | | TOLERANCES UNLESS OTHERWISE SPECIFIED | |
| | | | | DECIMALS | |
| | | | | .00 | ± .01 |
| | | | | .000 | ± .005 |
| 1 | REDRAWN TO CURRENT STANDARDS | DBT | 05/30/97 | .0000 | ± .0005 |
| NO. | REVISION | BY | DATE | FRACTIONS | ± 1/64 |
| | | | | ANGLES | ± 1/2° |
| | | | | INCH/MM | |

LEESON ELECTRIC CORPORATION

DRAWN GWS 2/23/96 TITLE EXT. WIRING DIAGRAM
 CH'K'D. TYPE "T" W/O PROTECTOR
 APPR. MAT'L. DECAL - 080590
 SCALE 1=1
 REF. 005352 PG 3 FINISH STOCK SIZE A DRAWING NO. 005381-01
 FMF