

PRODUCT INFORMATION PACKET



Model No: 131971.00
Catalog No: 131971.00
1.50 HP General Purpose Motor, 3 phase, 1200 RPM, 230/460 V, 182T Frame, ODP
General Purpose Motors



Regal and Leeson are trademarks of Regal Rexnord Corporation or one of its affiliated companies.
©2021 Regal Rexnord Corporation, All Rights Reserved. MC017097E



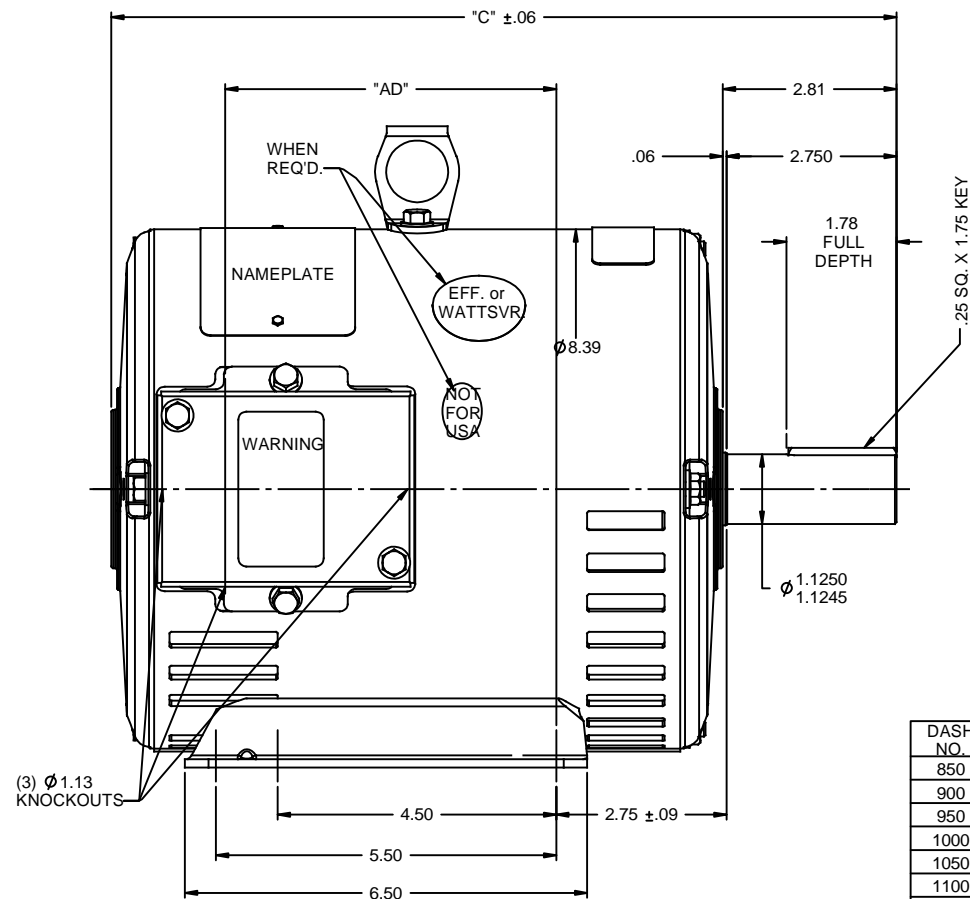


Nameplate Specifications

Output HP	1.50 Hp	Output KW	1.1 kW
Frequency	60 Hz	Voltage	230/460 V
Current	6.2/3.1 A	Speed	1170 rpm
Service Factor	1.15	Phase	3
Efficiency	86.5 %	Power Factor	60
Duty	Continuous	Insulation Class	F
Design Code	B	KVA Code	K
Frame	182T	Enclosure	Drip Proof
Thermal Protection	Automatic	Ambient Temperature	40 °C
Drive End Bearing Size	6206	Opp Drive End Bearing Size	6205
UL	Recognized	CSA	Y
CE	Y	IP Code	22
Number of Speeds	1		

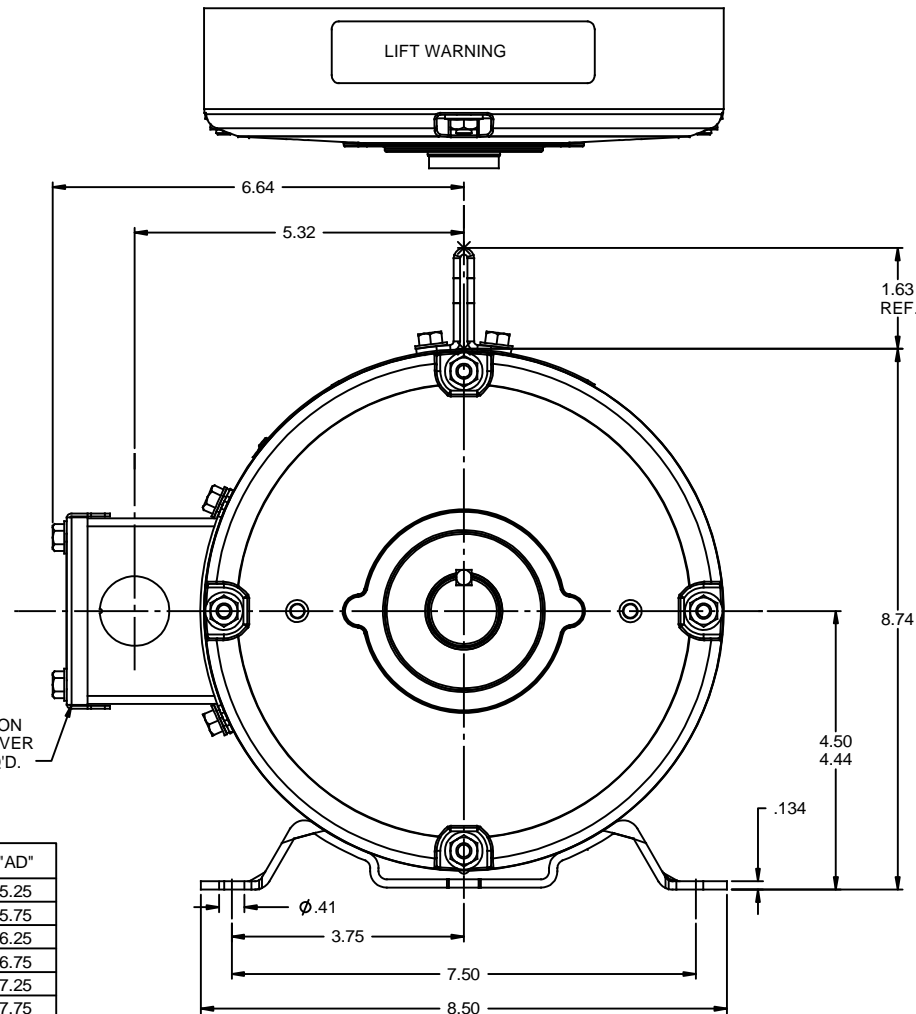
Technical Specifications

Electrical Type	Squirrel Cage Induction Run	Starting Method	Across The Line
Poles	6	Rotation	Reversible
Resistance Main	0 Ohms	Mounting	Rigid Base
Motor Orientation	Horizontal	Drive End Bearing	Ball
Opp Drive End Bearing	Ball	Frame Material	Rolled Steel
Shaft Type	T	Overall Length	13.19 in
Frame Length	9.00 in	Shaft Diameter	1.125 in
Shaft Extension	2.75 in	Assembly/Box Mounting	F1 ONLY
Connection Drawing	005010.20	Outline Drawing	035464-900



DASH NO.	"C"	"AD"
850	12.69	5.25
900	13.19	5.75
950	13.69	6.25
1000	14.19	6.75
1050	14.69	7.25
1100	15.19	7.75
1150	15.69	8.25
1200	16.19	8.75

DECAL-
CONNECTION
UNDER COVER
WHEN REQ'D.

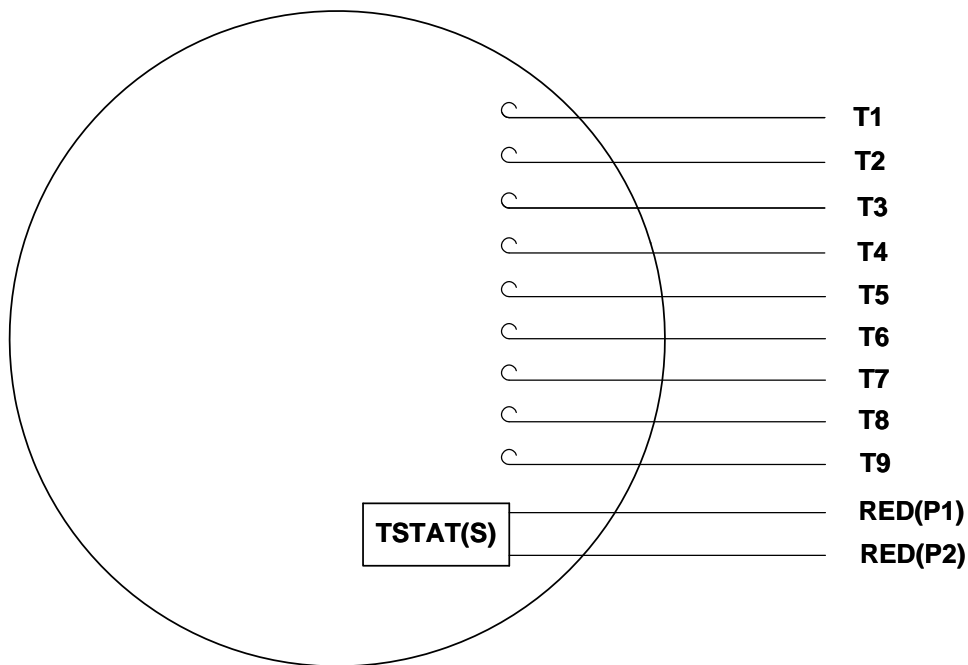


GASKETS THROUGHOUT

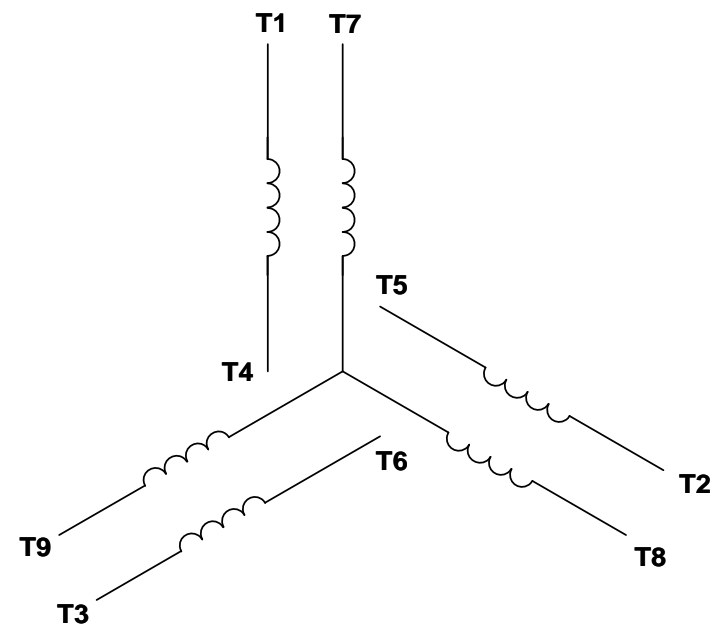
		TOLERANCES UNLESS SPECIFIED		DRAWN MGM 2/21/03	
		DEC	INCHES	CHK	
		X	$\pm .1$	APPR RDW 2/21/03	
		XX	$\pm .03$	SCALE 1:2	
		XXX	$\pm .005$	REF 035455	
- UPDATED & REDRAWN IN SOLIDWORKS		LST 12/23/2009	XX XXXX $\pm .0005$	MATL GENERAL PURPOSE	FMF
NO	REVISION	BY & DATE	CHK ANG $\pm 1/2^\circ$	FINISH	PAGE OF
			RFP	PREV	
THIRD ANGLE PROJECTION		NETWORK FILE NAME		SIZE B	DRAWING NO 035464
					REV -

VIEW FROM OUTSIDE OF MOTOR AT SWITCH END.

Uncontrolled Copy



LINE LEADS



VOLTAGE	L1	L2	L3	JOIN & INSULATE
HIGH	T1	T2	T3	(T4,T7) (T5,T8) (T6,T9)
LOW	T1,T7	T2,T8	T3,T9	T4,T5,T6

DRAWING REVISION G	REVISION BY MVG	DATE 04/05/2017
ECO ECO-0121253	APPROVED BY SM	DATE 04/05/2017

ECO DESCRIPTION
ADDED P1 & P2 FOR TSTAT

TOLERANCES UNLESS OTHERWISE SPECIFIED:

DEC.	INCH	mm	ANGLE
.X	±0.1	[±2.5]	±0.5°
.XX	±0.01	[±0.25]	
.XXX	±0.005	[±0.127]	
.XXXX	±0.0005	[±0.0127]	

REMOVE BURRS & BREAK SHARP EDGES: .003/.015 [.076/.381] X 45°
CORNER FILLETS: R.02 [.51]
MACHINED SURFACES: 125/3.2 INCH/mm

mm SHOWN IN [BRACKETS]

DRAWN BY DBT 12/16/97	DATE
APPROVED BY KH 12/17/97	DATE
REFERENCE	
THIRD ANGLE PROJECTION	



Regal Beloit America, Inc.

DESCRIPTION CONN DIAGRAM-EXTERNAL 3 PHASE WITH PROTECTOR		
MATERIAL DECAL - 004014 (TSTAT) - 080582	PROCESS/FINISH STOCK	
SIZE A	DRAWING NUMBER 00501020	SHEET 1 OF 1

Data Sheet

Date: 1/30/2018

131971.00



Data @ 460 V

Motor Load Data

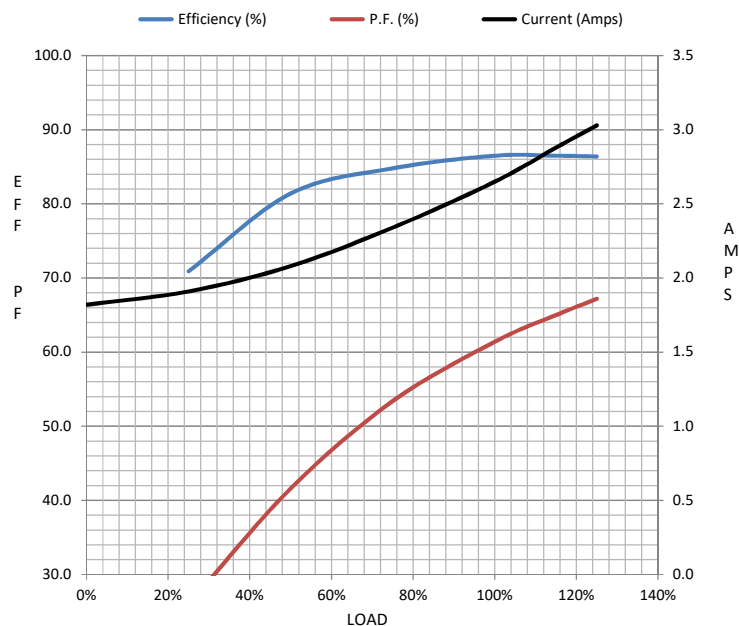
Load	0%	25%	50%	75%	100%	115%	125%	LR	
Current (Amps)	1.82	1.91	2.08	2.34	2.65	2.88	3.0	17.4	
Torque (ft-lb)	0.00	1.65	3.3	5.0	6.7	7.7	8.4	13.7	
RPM	1200	1195	1190	1184	1170	1,175	1172	0	
Efficiency (%)		70.9	81.4	84.8	86.5	86.5	86.4		
P.F. (%)	7.5	26.0	41.6	53.4	61.4	65.0	67.2	0.0	

Motor Speed Data

	LR	Pull-Up	BD	Rated	Idle
Speed (RPM)	0	193	1021	1170	1200
Current (Amps)	17.4	16.2	8.4	2.65	1.82
Torque (ft-lb)	13.7	13.5	24.8	6.7	0.00

Information Block

HP	1.5			
Sync. RPM	1200			
Frame	180			
Enclosure	DP			
Construction	TDW			
Voltage	230/460 V			
Frequency	60 Hz			
Design	B			
LR Code letter	L			
Service Factor	1.15			
Temp Rise @ FL	28 °C			
Duty	CONT			
Ambient	40 °C			
Elevation	1,000 feet			
Rotor/Shaft wk²	0.51 Lb-Ft²			
Ref Wdg	T8635 DR			
Sound Pressure @ 1M	0 dBA			
VFD Rating	NONE			
Outline Dwg	035464-900			
Conn. Diag	005010.20			
Additional Specifications:				
0				
0				
EQUIV CKT (OHMS / PHASE)				
R1	R2	X1	X2	Xm
0.0000	0.0000	0.0000	0.0000	0.0000



Speed - Torque Curve

