

# PRODUCT INFORMATION PACKET



Model No: 131937.00

Catalog No: 131937.00

4HP..1740RPM.182.TENV./480V.3PH.60HZ.AIROVER.AUTOMATIC.70C.1.15SF.RIGID..C182T17NB4A

Regal and Leeson are trademarks of Regal Rexnord Corporation or one of its affiliated companies.

©2023 Regal Rexnord Corporation, All Rights Reserved. MC017097E





### Nameplate Specifications

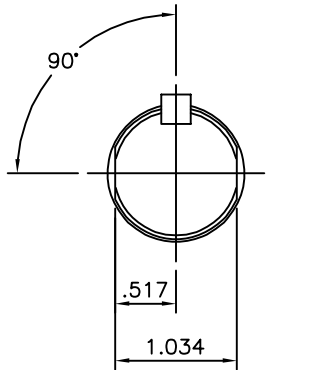
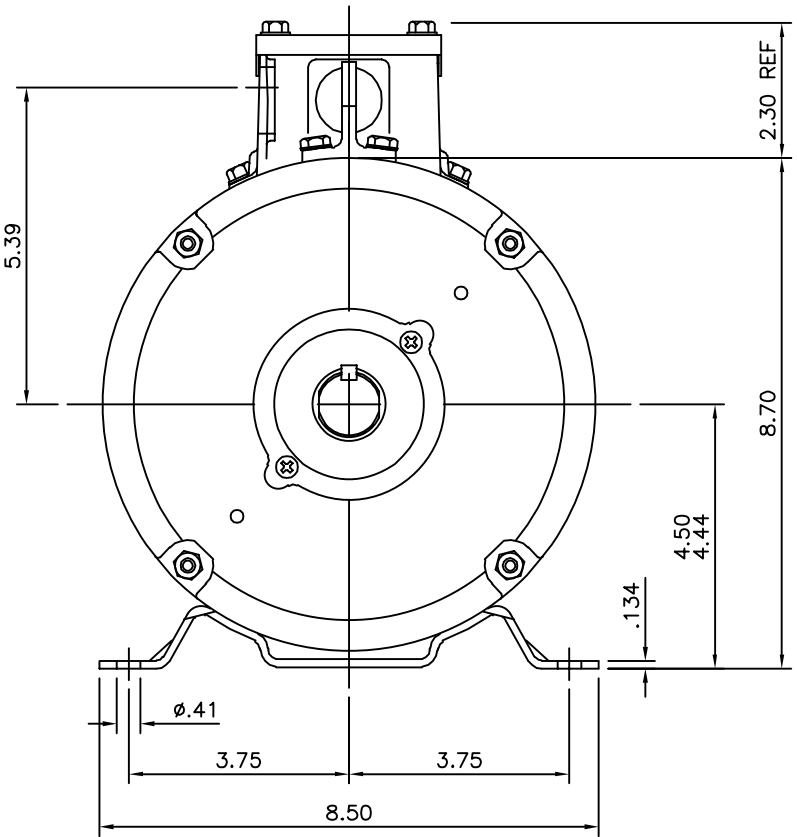
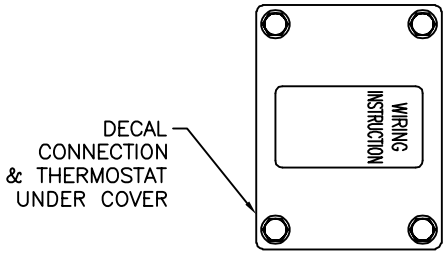
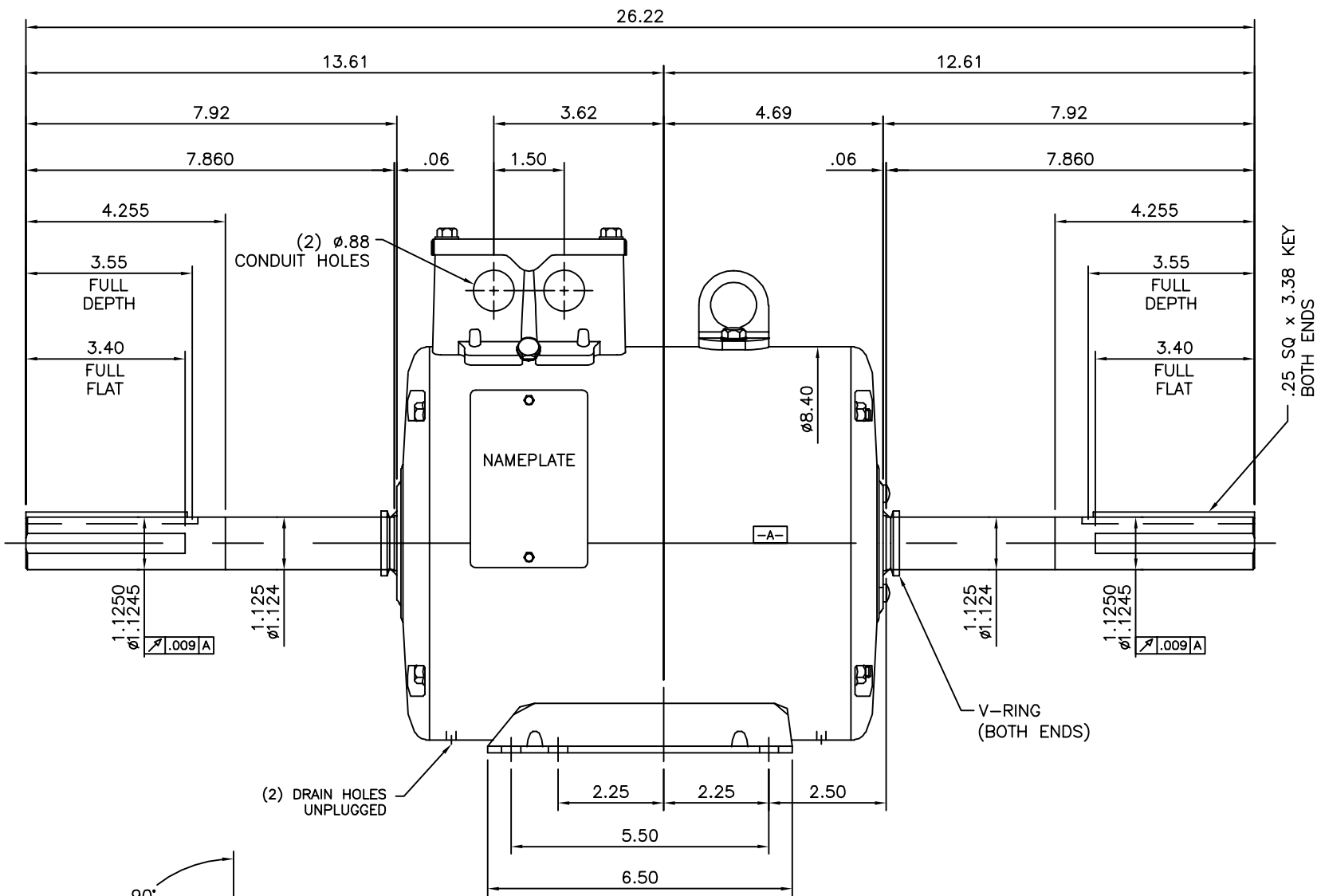
Output HP	4 Hp	Output KW	3.0 kW
Frequency	60 Hz	Voltage	480 V
Current	5.8 A	Speed	1740 rpm
Service Factor	1.15	Phase	3
Duty	Continuous	Insulation Class	H
Design Code	B	KVA Code	L
Frame	182TZ	Enclosure	Totally Enclosed Air Over
Thermal Protection	Thermostat	Ambient Temperature	70 °C
Drive End Bearing Size	6206	Opp Drive End Bearing Size	6206
UL	Recognized	CSA	Y
CE	N	IP Code	43
Number of Speeds	1		

### Technical Specifications

Electrical Type	Squirrel Cage Induction Run	Starting Method	Across The Line
Poles	4	Rotation	Reversible
Resistance Main	3.84 Ohms	Mounting	Rigid Base
Motor Orientation	Horizontal	Drive End Bearing	Ball
Opp Drive End Bearing	Ball	Frame Material	Rolled Steel
Shaft Type	Special Extension Both Sides	Assembly/Box Mounting	F3
Connection Drawing	005102.09	Outline Drawing	OL131937


This is an uncontrolled document once printed or downloaded and is subject to change without notice. Date Created:03/30/2023

OL131937

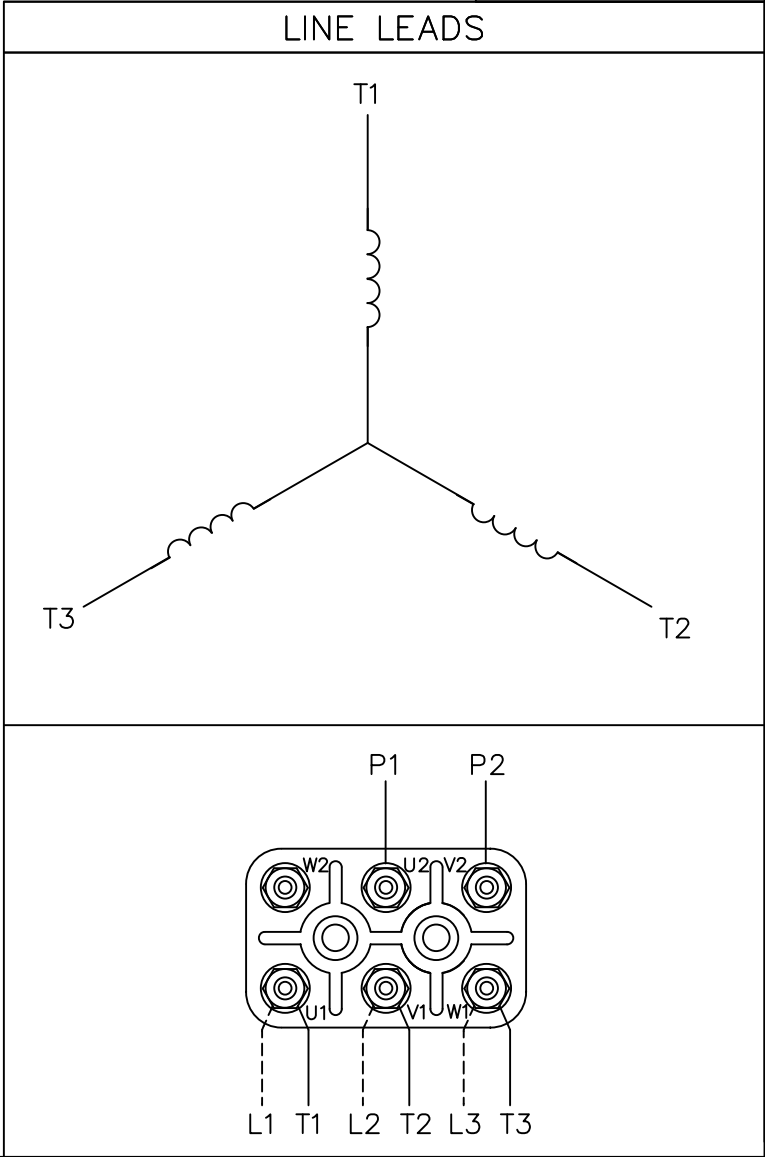
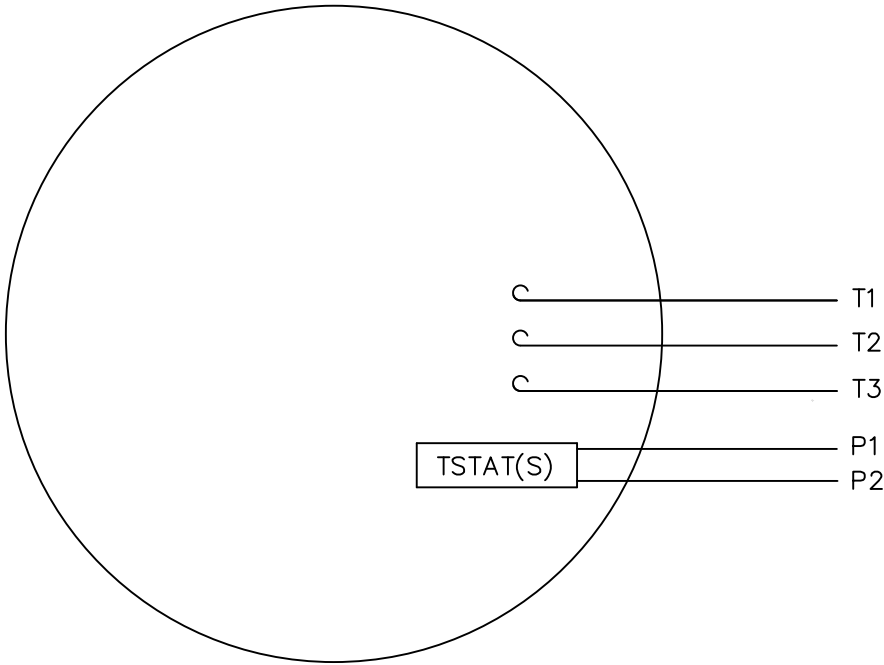



SHAFT DETAIL (BOTH ENDS)  
SCALE = 2:1

SPECIAL FEATURES:  
GASKETS THROUGHOUT  
STAINLESS STEEL NAMEPLATE, HARDWARE  
CONDUIT BOX COVER, & LIFTING LUG

				TOLERANCES UNLESS SPECIFIED			ELECTRIC MOTORS GEARMOTORS AND DRIVES	DRAWN RDW 7/25/02			
04	SHAFT RUNOUT SPEC .009 TIR ADDED ECR-0073717	GR 16-04-15	DEC.	INCHES				CHK			
03	ADD MT2 NAMEPLATE PER ISAAC 09-2196		.X	±.1				APPD SW 7/25/02			
02	CHANGED KEYWAY AS PER ECO # 08-1078 &	RLW 6/9/04	.XX	±.03		TITLE	OUTLINE – 182TZ FRAME TENV – RIGID	SCALE	3=8		
	ADDED DRAIN HOLES IN FRAME AS PER ECO # 07-4372		.XXX	±.005				REF	OL131888		
01	REV'D CONDUIT BOX COOVER MOUNTING SCREWS	BJB 09/25/03	.XXXX	±.0005		MAT'L.		FMF			
NO.	REVISION	BY & DATE	CHK	ANG	±1/2'	FINISH		PREV			
THIS DRAWING IN DESIGN AND DETAIL IS OUR PROPERTY AND MUST NOT BE USED EXCEPT IN CONNECTION WITH OUR WORK ALL RIGHTS OF DESIGN AND INVENTION ARE RESERVED THIS IS AN ELECTRONICALLY GENERATED DOCUMENT – DO NOT SCALE THIS PRINT			RFP		7/25/02	CAD FILE		OL131937	SIZE	DRAWING NO.	REV.
			DIST		NLV			B	OL131937	04	

VIEW FROM OUTSIDE OF MOTOR AT SWITCH END.



				TOLERANCES UNLESS SPECIFIED		 ELECTRIC MOTORS GEARMOTORS AND DRIVES	DRAWN TMZ 02/21/97		
				DEC.	INCHES		CHK KH 02/24/97		
				.X	±.1		APPD ARV 02/27/97		
				.XX	±.01		SCALE 1=1		
				.XXX	±.005		REF 005102-05		
01	ADDED TSTAT CONNECTIONS	MN 9/28/98		.XXXX	±.0005	TITLE	EXTERNAL WIRING DIAGRAM TYPE "T" W/O PROTECTOR		
NO.	REVISION	BY & DATE	CHK	ANG	±1/2°	MAT'L.	SINGLE VOLTAGE W/TERMINAL BLOCK		
				RFP		FINISH	DECAL 080661		
				DIST		CAD FILE	00510209		
						SIZE	DRAWING NO.	PAGE	OF
						A	005102-09		01

THIS DRAWING IN DESIGN AND DETAIL IS OUR PROPERTY AND MUST NOT BE USED EXCEPT IN CONNECTION WITH OUR WORK ALL RIGHTS OF DESIGN AND INVENTION ARE RESERVED THIS IS AN ELECTRONICALLY GENERATED DOCUMENT - DO NOT SCALE THIS PRINT