

PRODUCT INFORMATION PACKET



Model No: 131881.00

Catalog No: 131881.00

5 HP Close-Coupled Pump Motor, 1 phase, 3600 RPM, 208-230 V, 184JP Frame, ODP
Close-Coupled Pump Motors



Regal and Leeson are trademarks of Regal Rexnord Corporation or one of its affiliated companies.
©2021 Regal Rexnord Corporation, All Rights Reserved. MC017097E





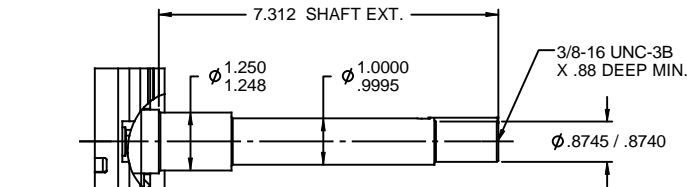
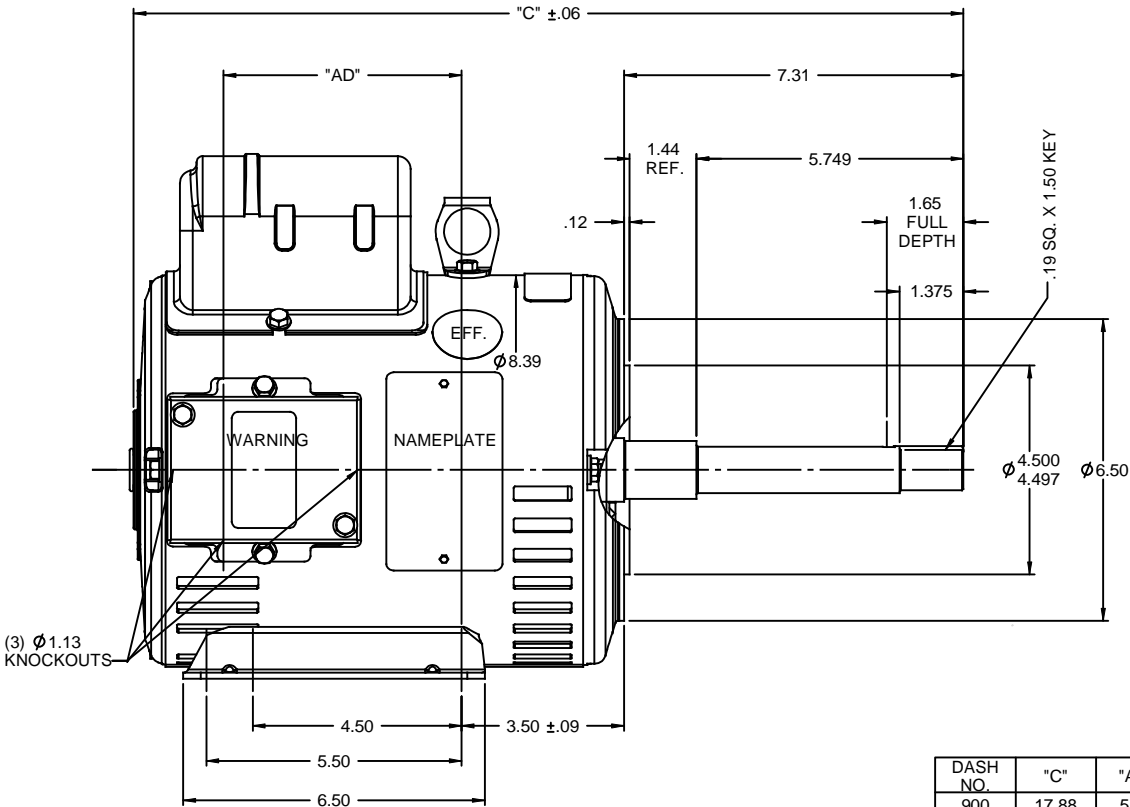
Nameplate Specifications

Output HP	5 Hp	Output KW	3.7 kW
Frequency	60 Hz	Voltage	208-230 V
Current	24.0-22.0 A	Speed	3500 rpm
Service Factor	1.15	Phase	1
Efficiency	80 %	Power Factor	92
Duty	Continuous	Insulation Class	F
Design Code	L	KVA Code	G
Frame	184JP	Enclosure	Drip Proof
Thermal Protection	No	Ambient Temperature	40 °C
Drive End Bearing Size	6207	Opp Drive End Bearing Size	6205
UL	Recognized	CSA	Y
IP Code	22	Number of Speeds	1

Technical Specifications

Electrical Type	Capacitor Start Capacitor Run	Starting Method	Across The Line
Poles	2	Rotation	Selective Counterclockwise
Resistance Main	.37 Ohms	Mounting	Rigid Base
Drive End Bearing	Ball	Opp Drive End Bearing	Ball
Frame Material	Rolled Steel	Shaft Type	JP
Overall Length	19.38 in	Frame Length	10.50 in
Shaft Diameter	0.875 in	Shaft Extension	7.28 in
Assembly/Box Mounting	F1 Only		
Outline Drawing	035751-1050	Connection Drawing	005018.01

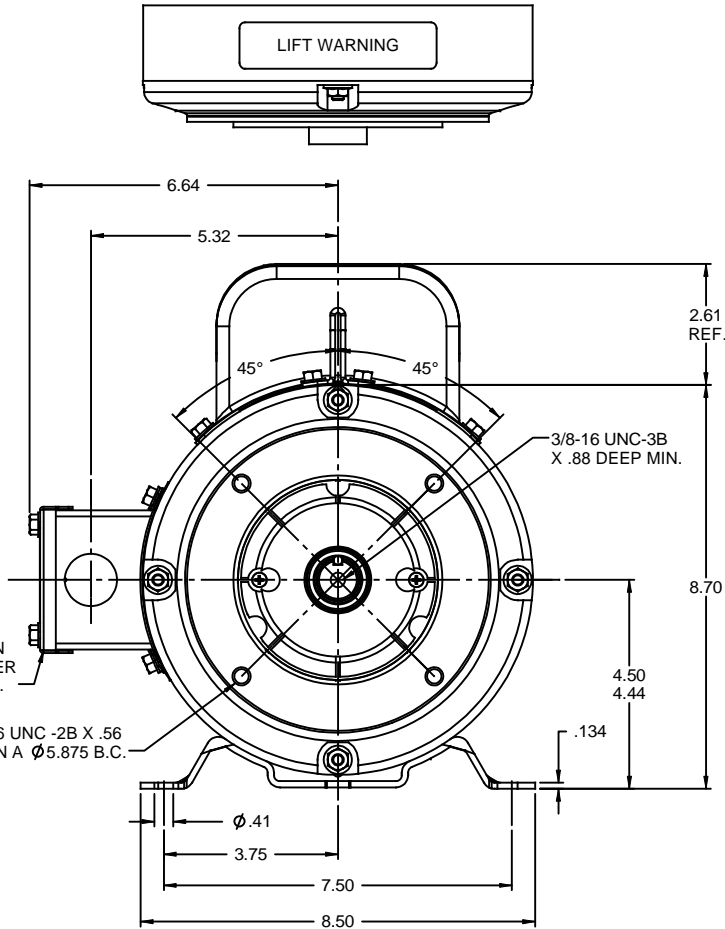
This is an uncontrolled document once printed or downloaded and is subject to change without notice. Date Created:10/12/2021



DASH NO.	"C"	"AD"
900	17.88	5.13
950	18.38	5.63
1000	18.88	6.13
1050	19.38	6.63
1100	19.88	7.13
1150	20.38	7.63
1200	20.88	8.13

DECAL-
CONNECTION
UNDER COVER
WHEN REQ'D.

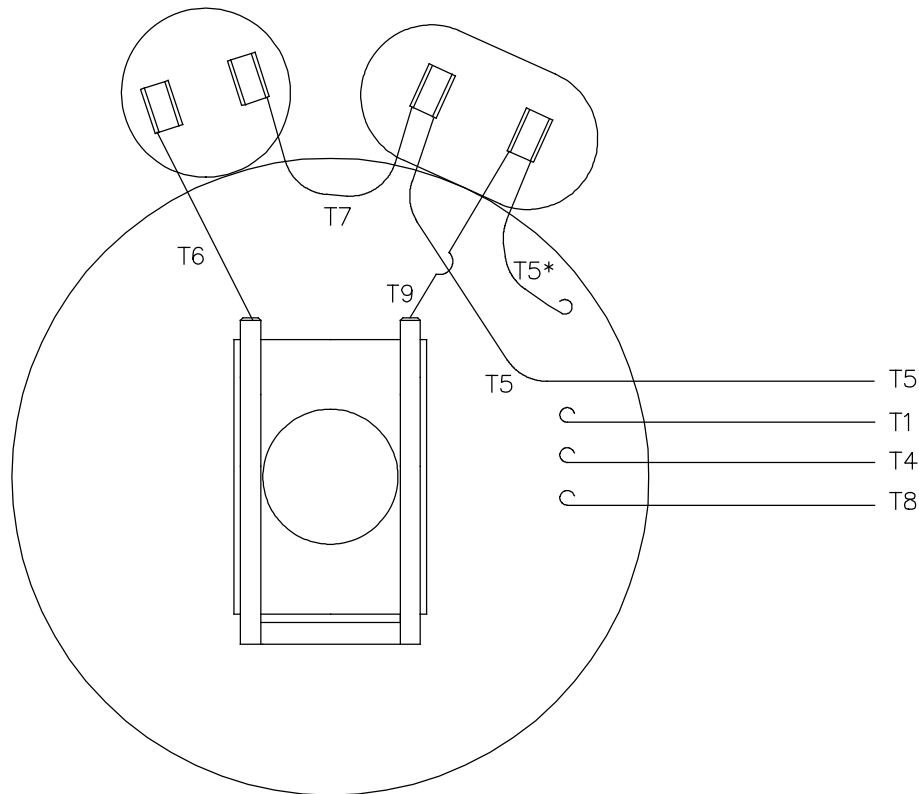
(4) 3/8-16 UNC-2B X .56
DEEP ON A Ø 5.875 B.C.



GASKETS THROUGHOUT
 MAXIMUM FACE RUNOUT TO BE .004 T.I.R.
 MAXIMUM PILOT ECCENTRICITY TO BE .004 T.I.R.
 PERMISSIBLE SHAFT RUNOUT TO BE .008 T.I.R.

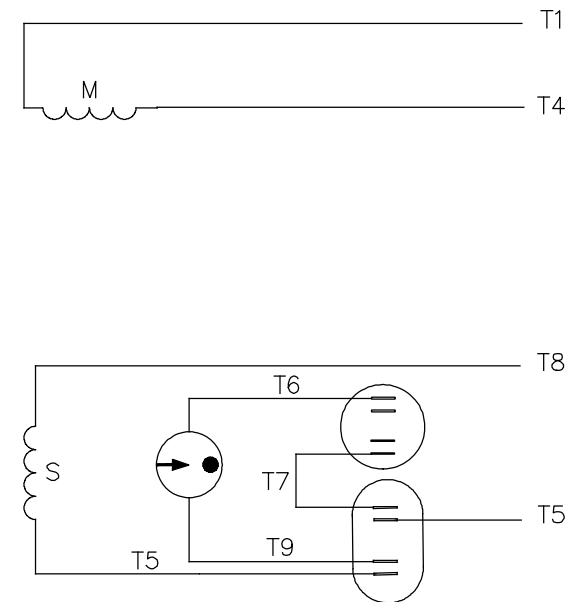
				TOLERANCES UNLESS SPECIFIED	REGAL-BELOIT CORPORATION	DRAWN LST 1/8/10	
				DEC INCHES		CHK	
				X ±.1		APPR	
				XX ±.03		SCALE 3:8	
				XXX ±.005		REF	
				XXXX ±.0005	MATL	FMF	
NO	REVISION	BY & DATE	CHK ANG ±1/2°	FINISH	PAGE OF		
	THIRD ANGLE PROJECTION		RFP	PREV	SIZE	DRAWING NO	REV
			NETWORK FILE NAME		B	035751	

VIEW FROM OUTSIDE OF MOTOR AT SWITCH END.



* THIS LEAD MAY BE WHITE

LINE LEADS

ROTATION
FACING
LEAD END

L1

L2

C.C.W.


T1,T8

T4,T5

C.W.

T1,T5

T4,T8

				TOLERANCES UNLESS SPECIFIED		 Regal Beloit America, Inc.	DRAWN ADH 02/19/74			
				DEC.	INCHES		CHK WRK 02/20/74			
21	LOGO UPDATED FROM LEESON TO MARATHON	AS 07/03/19	AS	.X	±.1		APPD JCW 02/20/74			
20	ALTERNATE T5 LEAD MARKING WAS RED	RLW 7/22/02	KH	.XX	±.01		SCALE 1=1			
19	ADDED ALTERNATE T5 LEAD MARKING	RLW 5/31/02	KH	.XXX	±.005	TITLE EXTERNAL WIRING DIAGRAM TYPE "K" W/O PROTECTOR	REF			
18	REDRAWN ON CAD	DBT 06/24/97		.XXXX	±.0005		MAT'L. DECAL – 004018	FMF		
NO.	REVISION	BY & DATE	CHK	ANG	±1/2"	FINISH	PREV			
THIS DRAWING IN DESIGN AND DETAIL IS OUR PROPERTY AND MUST NOT BE USED EXCEPT IN CONNECTION WITH OUR WORK ALL RIGHTS OF DESIGN AND INVENTION ARE RESERVED THIS IS AN ELECTRONICALLY GENERATED DOCUMENT – DO NOT SCALE THIS PRINT				RFP		CAD FILE 00501801		SIZE	DRAWING NO.	REV.
				DIST BRF–NLV				A	005018–01	21



CERTIFICATION DATA SHEET

**1051 CHEYENNE AVE.
GRAFTON, WI 53024
PH. 262-377-8810**

CONN. DIAGRAM: 005018.01

CATALOG #: 131881.00

OUTLINE: 035751-1050

MOUNTING: F1 ONLY

WINDING #: K8222 DR 2 A

TYPICAL MOTOR PERFORMANCE DATA

HP	kW	SYNC. RPM	F.L. RPM	FRAME	ENCLOSURE	KVA CODE	DESIGN
5	3.70	3600	3500	184JP	DP	G	L

PH	Hz	VOLTS	AMPS	START TYPE	DUTY	INSL	S.F.	AMB°C
1	60	208-230	24-22	ACROSS THE LINE	CONTINUOUS	F4	1.15	40

FULL LOAD EFF:	80	3/4 LOAD EFF:	78.5	1/2 LOAD EFF:	75.1	GTD. EFF		ELEC. TYPE
FULL LOAD PF:	92	3/4 LOAD PF:	91.3	1/2 LOAD PF:	86.3	77		CAP START CAP RUN

F.L. TORQUE	LOCKED ROTOR AMPS	L.R. TORQUE	B.D. TORQUE	F.L. RISE°C
7.5 LB-FT	141	19 LB-FT 253 %	19.2 LB-FT 256 %	44.9

SOUND PRESSURE @ 3 FT.	SOUND POWER	ROTOR WK^2	MAX. WK^2	SAFE STALL TIME	STARTS / HOUR	APPROX. MOTOR WGT
0 dBA	10 dBA	0.16 LB-FT^2	0.2 LB-FT^2	10 SEC.	0	95 LBS.

***** SUPPLEMENTAL INFORMATION *****

DE BRACKET TYPE	ODE BRACKET TYPE	MOUNT TYPE	ORIENTATION	SEVERE DUTY	HAZARDOUS LOCATION	DRIP COVER	SCREENS	PAINT
C-FACE	STANDARD	RIGID	HORIZONTAL	FALSE	NONE	FALSE	NONE	BLUE - LEESON (ENAMEL)

BEARINGS		GREASE	SHAFT TYPE	SPECIAL DE	SPECIAL ODE	SHAFT MATERIAL	FRAME MATERIAL
DE	ODE						
BALL	BALL	POLYREX EM	JP	NONE	NONE	AISI 1045 (C-240)	ROLLED STEEL
6207	6205						

THERMO-PROTECTORS				THERMISTORS	CONTROL	SPACE HEATERS
THERMOSTATS	PROTECTORS	WDG RTDs	BRG RTDs			
NONE	NOT	NONE	NONE	NONE	FALSE	NONE VOLTS

*

N

O

T

E

S

INVERTER TORQUE: NONE
INV. HP SPEED RANGE: NONE

ENCODER: NONE
NONE NONE
NONE NONE PPR

BRAKE: NONE NONE
NONE P/N NONE
NONE NONE
NONE FT-LB NONE V NONE Hz



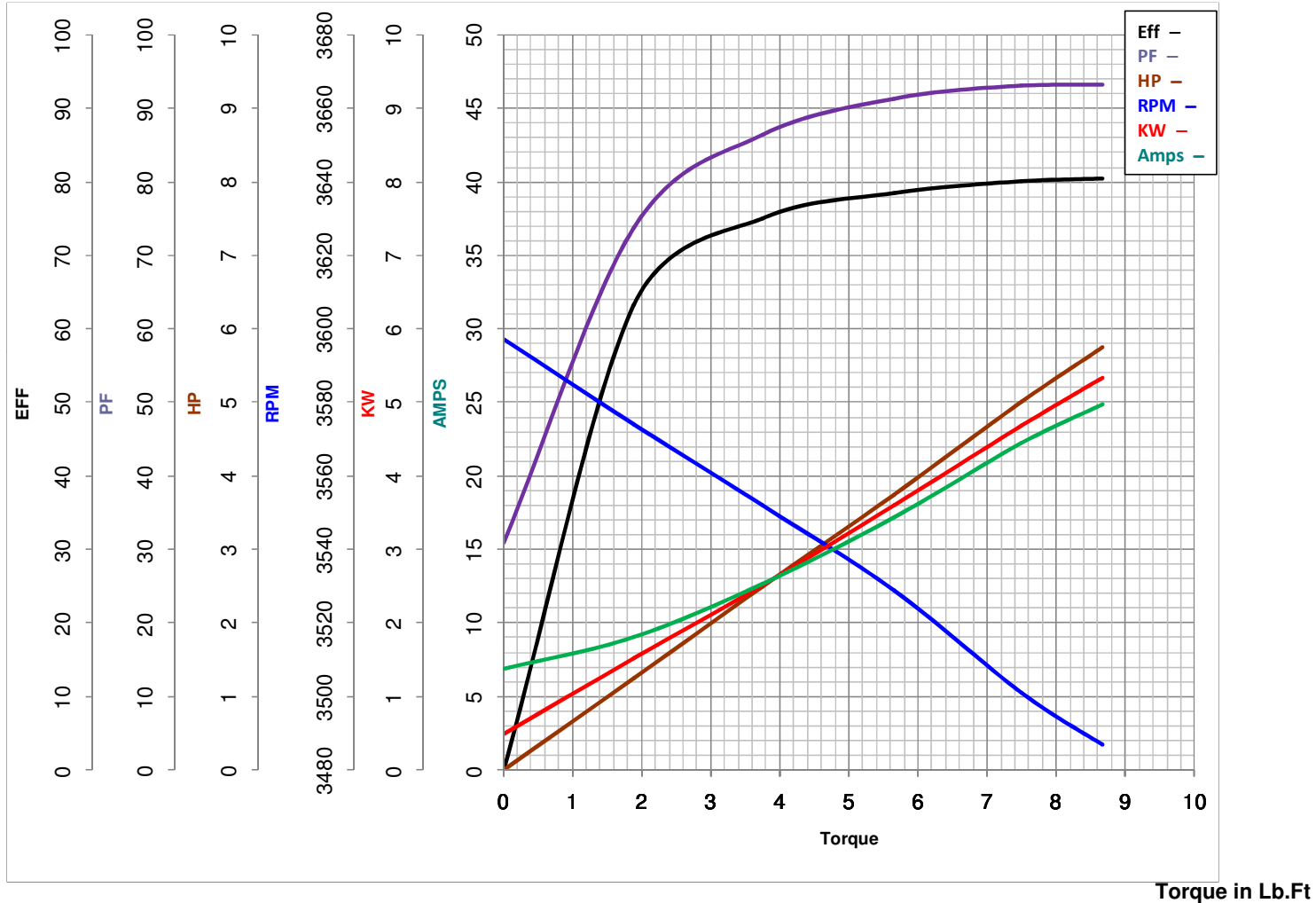
LEESON ELECTRIC CORPORATION

TYPICAL PERFORMANCE CURVE for AC MOTOR

Model No 131881.00Catalog No 131881.00

Curve at

230
60
5

 Volts
 HZ
 HP
HP 5.00PHASE 1VOLTS 208-230HZ 60RPM 3500

Torque in Lb.Ft

 FL TORQUE 7.5 Lb.Ft
 BD TORQUE 19.2 Lb.Ft
 LR TORQUE 19 Lb.Ft

 FL AMPS 24-22
 PU TORQUE 16.0 Lb.Ft
 LR AMPS 141

WINDING K8222-2

Date 4/12/2018