

# PRODUCT INFORMATION PACKET



Model No: 131848.00

Catalog No: 131848.00

Crop Dryer Motor, 7.50 & 10 HP, 1 Ph, 60 & 60 Hz, 230 & 230 V, 3600 & 3600 RPM, 182TZ Frame, DPAO



Regal and Leeson are trademarks of Regal Rexnord Corporation or one of its affiliated companies.

©2023 Regal Rexnord Corporation, All Rights Reserved. MC017097E





### Nameplate Specifications

Phase	1	Output HP	7.50 & 10 Hp
Output KW	5.6 & 7.5 kW	Voltage	230 & 230 V
Speed	3450 & 3450 rpm	Service Factor	1.0
Frame	182TZ	Enclosure	Drip Proof Air Over
Thermal Protection	Thermostat	Efficiency	82.5 & 80 %
Ambient Temperature	40 °C	Frequency	60 & 60 Hz
Current	31 & 42 A	Power Factor	93.5
Duty	Continuous	Insulation Class	F
Design Code	L	KVA Code	G
Drive End Bearing Size	6206	Opp Drive End Bearing Size	6205
UL	Recognized	CSA	Y
CE	N	IP Code	22
Number of Speeds	1		

### Technical Specifications

Electrical Type	Capacitor Start Capacitor Run	Starting Method	Across The Line
Poles	2	Rotation	Selective Counterclockwise
Resistance Main	.214 Ohms	Mounting	Rigid Base
Motor Orientation	Horizontal	Drive End Bearing	Ball
Opp Drive End Bearing	Ball	Frame Material	Rolled Steel
Shaft Type	Single Special Extension	Overall Length	16.44 in
Frame Length	11.50 in	Shaft Diameter	1.125 in
Shaft Extension	3.5 in	Assembly/Box Mounting	F1 ONLY
Outline Drawing	035732-1150	Connection Drawing	005018.30

4

3

2

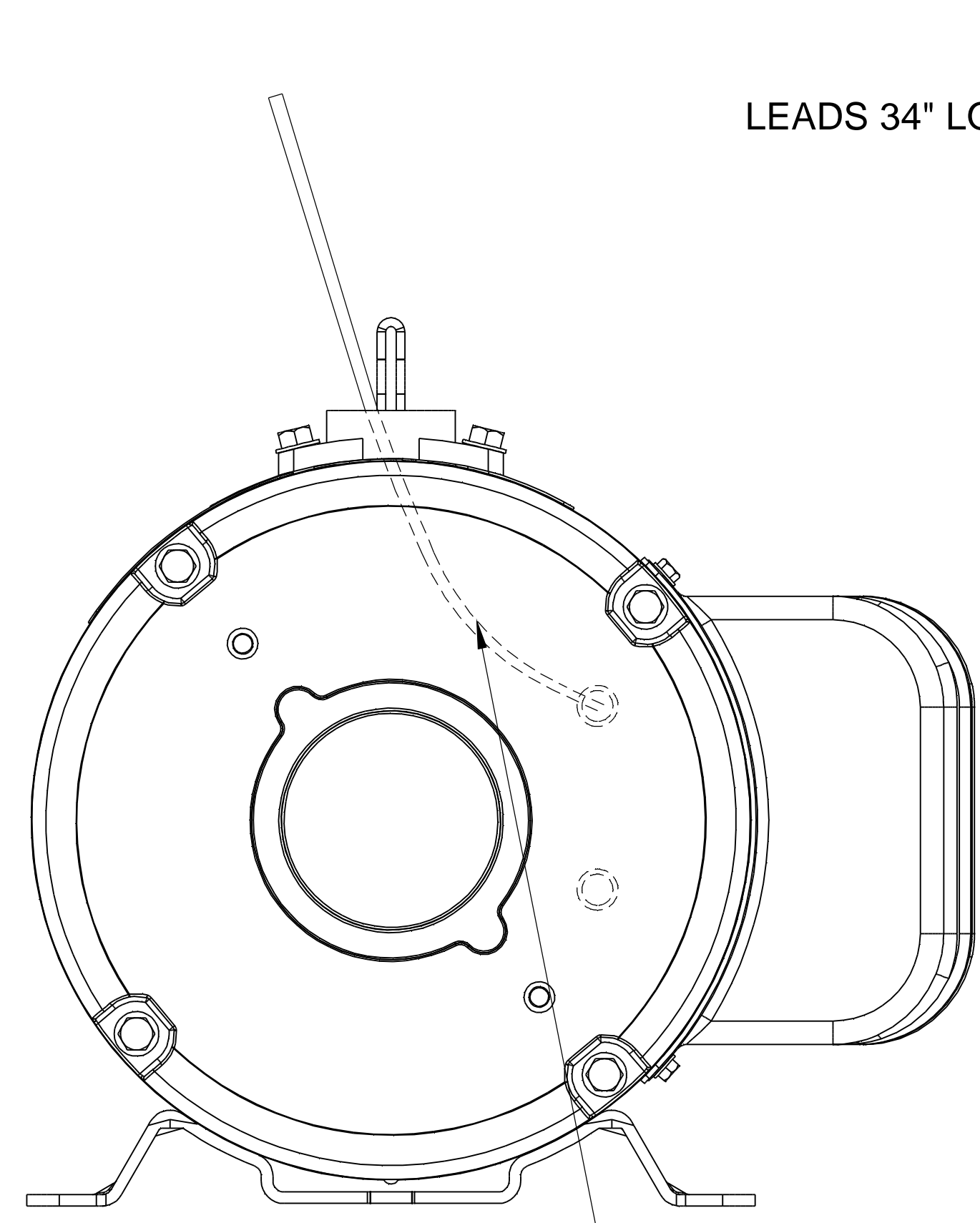
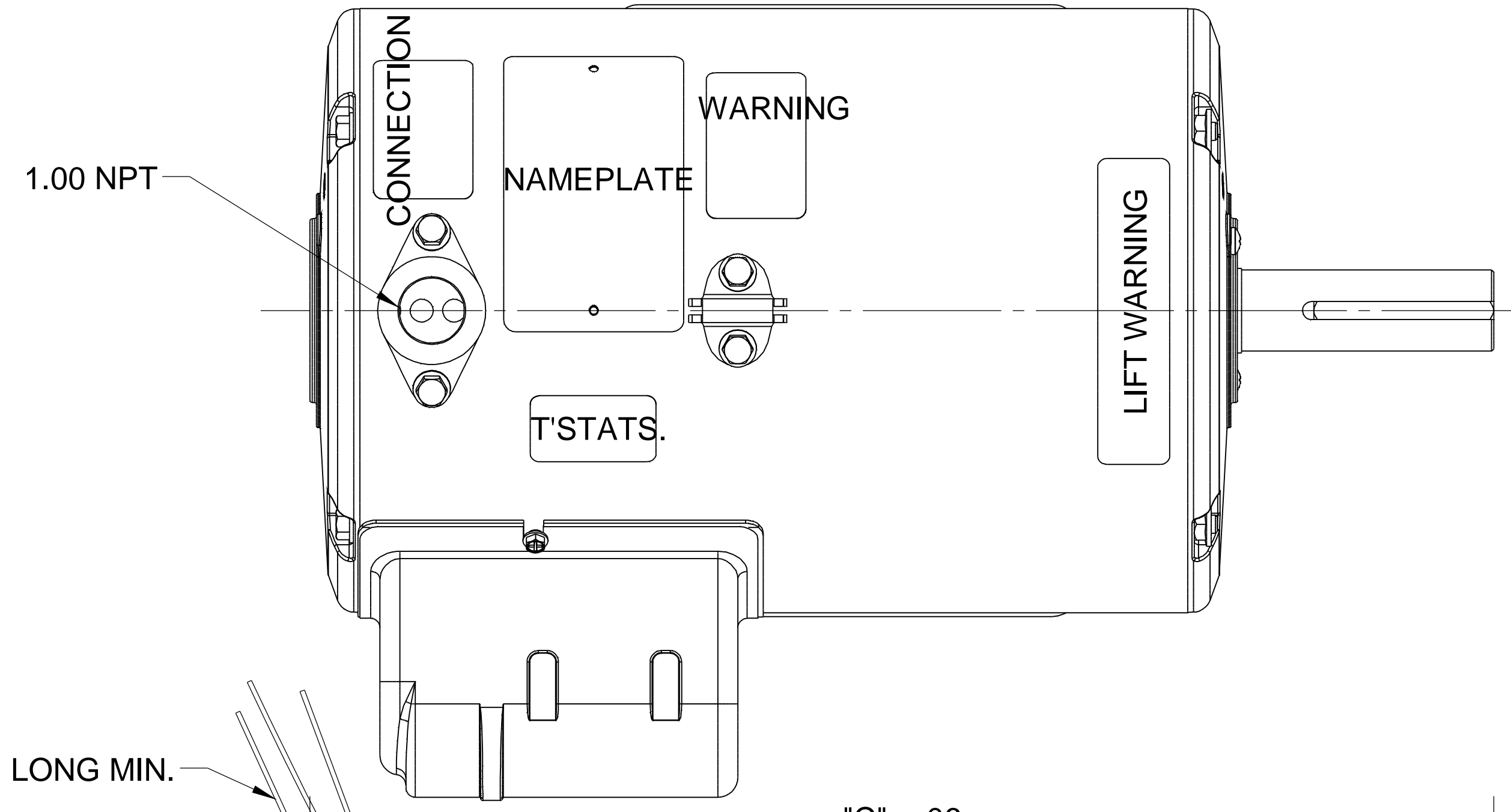
1

B

B

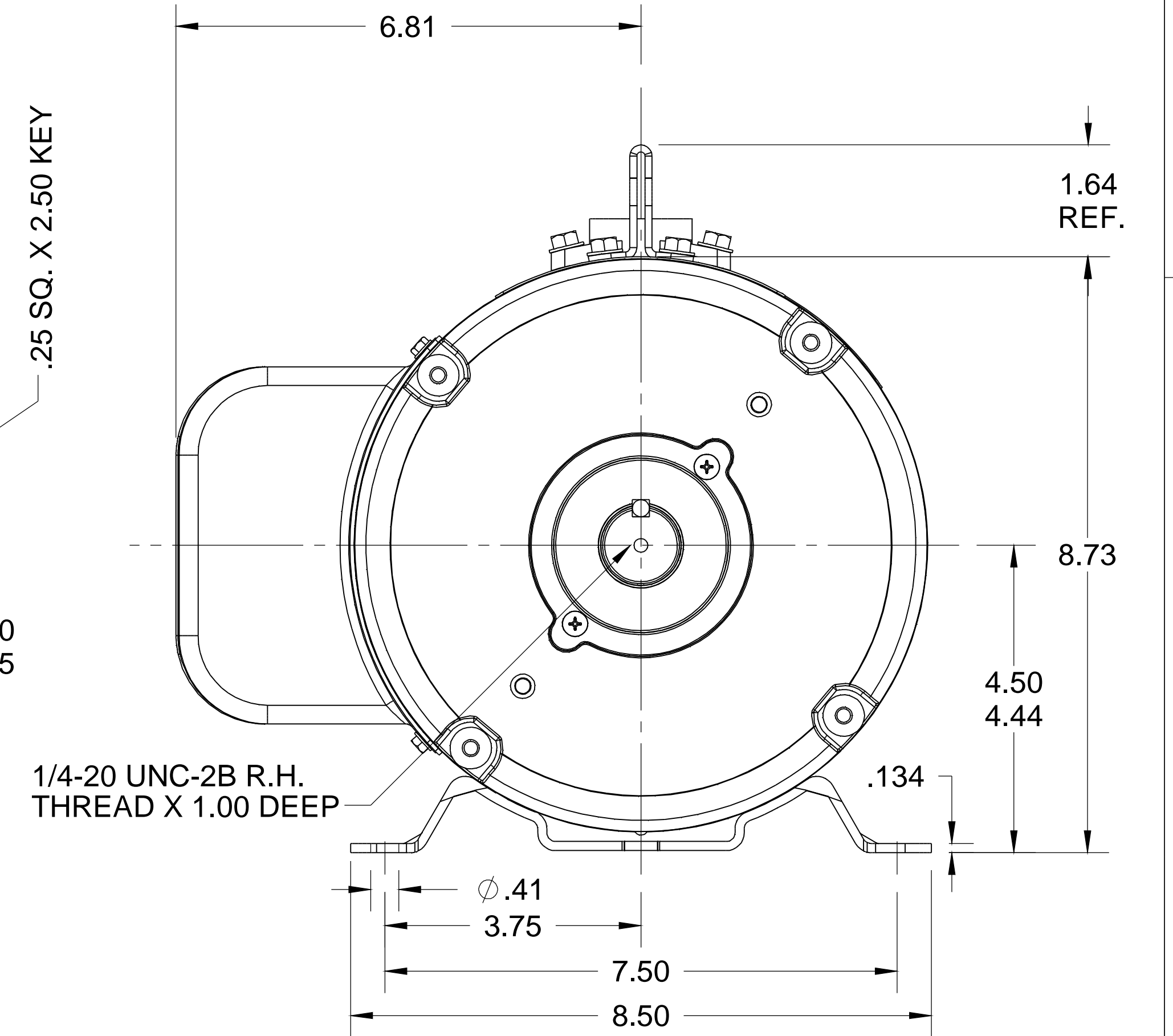
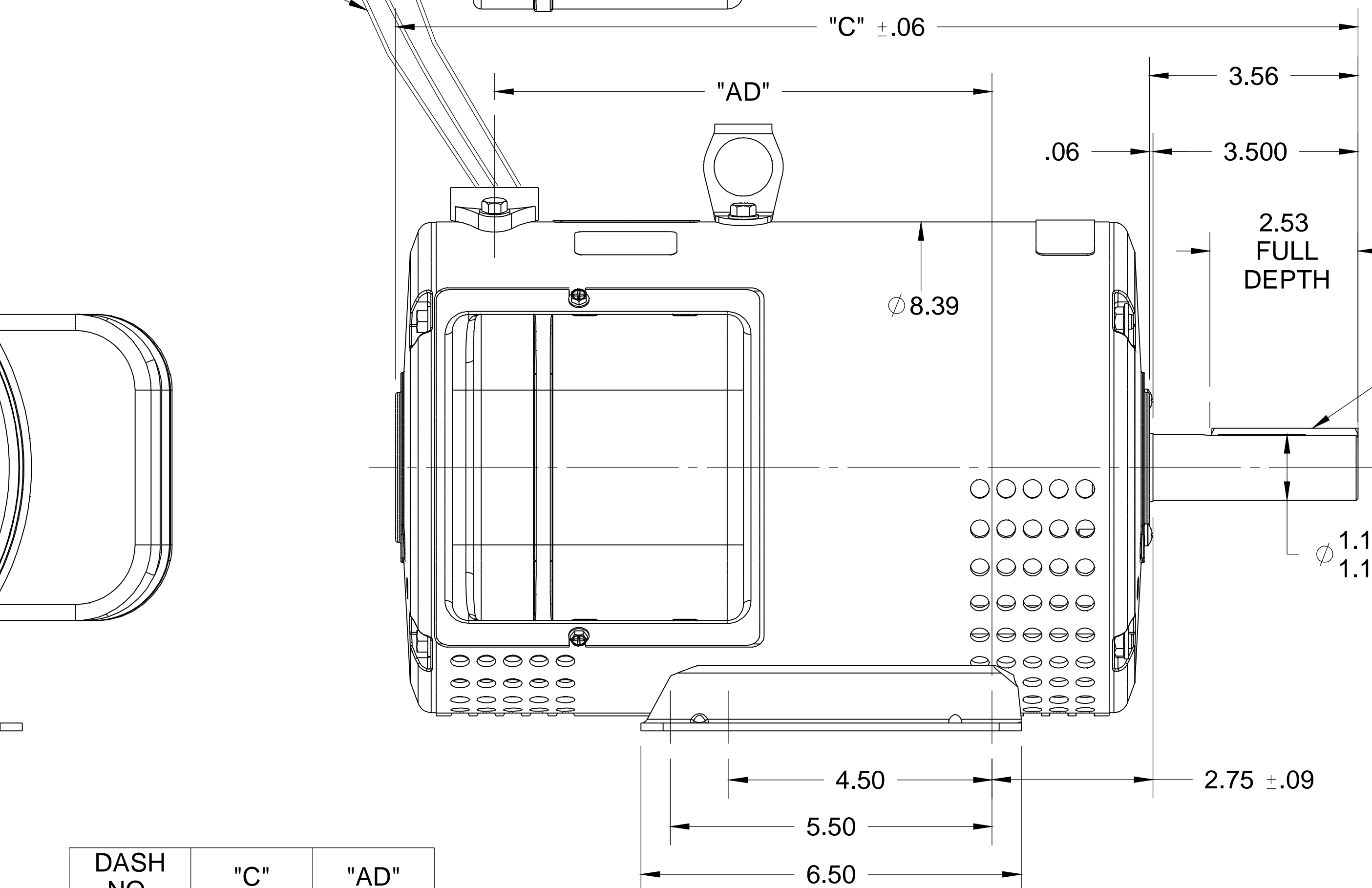
A

A



GROUND LEAD 34" LONG MIN. ATTACHED TO PROTECTOR BOSS WITH #10-32 GROUND SCREW

LEADS 34" LONG MIN.



DASH NO.	"C"	"AD"
1050	15.44	7.50
1100	15.94	8.00
1150	16.44	8.50
1200	16.94	9.00
1250	17.44	9.50
1300	17.94	10.00
1350	18.44	10.50
1400	18.94	11.00

DRAWING REVISION G	REVISION BY M.MCCALEB	DATE 04-27-2015
ECO ECO-0076543	APPROVED BY G.SCHALLOCK	DATE 04-27-2015
ECO DESCRIPTION 1.00 NPT WAS 3/4-14 NPT		
<small>COPYRIGHT REGAL BELOIT AMERICA, INC. ALL RIGHTS RESERVED. PROPRIETARY AND CONFIDENTIAL INFORMATION - THIS DOCUMENT IS THE PROPERTY OF REGAL BELOIT AMERICA, INC. ("OWNER") AND CONTAINS OWNER'S PROPRIETARY INFORMATION. ANY PERSON, CORPORATION OR OTHER FIRM RECEIVING IT IS DEEMED, BY RECEIVING IT, TO AGREE THAT IT, AND/OR ANY PART OF IT, SHALL NOT BE DISCLOSED TO ANY PERSON, CORPORATION OR OTHER ENTITY, DUPLICATED, AND/OR USED, EXCEPT AS EXPRESSLY APPROVED IN WRITING IN ADVANCE BY OWNER. THIS DOCUMENT SHALL BE RETURNED TO OWNER UPON REQUEST. IT MAY BE SUBJECT TO CERTAIN RESTRICTIONS UNDER APPLICABLE EXPORT CONTROL LAWS AND REGULATIONS.</small>		

TOLERANCES UNLESS OTHERWISE SPECIFIED:  
 DEC. INCH ±.1 [±2.5] ANGLE ±0.5°  
 .X ±0.1 [±2.5]  
 .XX ±0.03 [±0.76]  
 .XXX ±0.005 [±0.127]  
 .XXXX ±0.0005 [±0.0127]  
 REMOVE BURRS & BREAK SHARP EDGES: .003/.015 [.076/.381] X 45°  
 CORNER FILLETS: R.02 [.51]  
 MACHINED SURFACES: 125 INCH 3.2 mm  
 mm SHOWN IN [BRACKETS]

DRAWN BY  
LST  
 DATE  
5/5/09  
 APPROVED BY  
 DATE  
 REFERENCE  
 THIRD ANGLE PROJECTION

**REGAL**™ Regal Beloit America, Inc.

DESCRIPTION  
**OUTLINE**  
DRIP PROOF - RIGID

MATERIAL PROCESS/FINISH

SIZE **B** DRAWING NUMBER **035732** SHEET **1 OF 1**

ORACLE REV 003

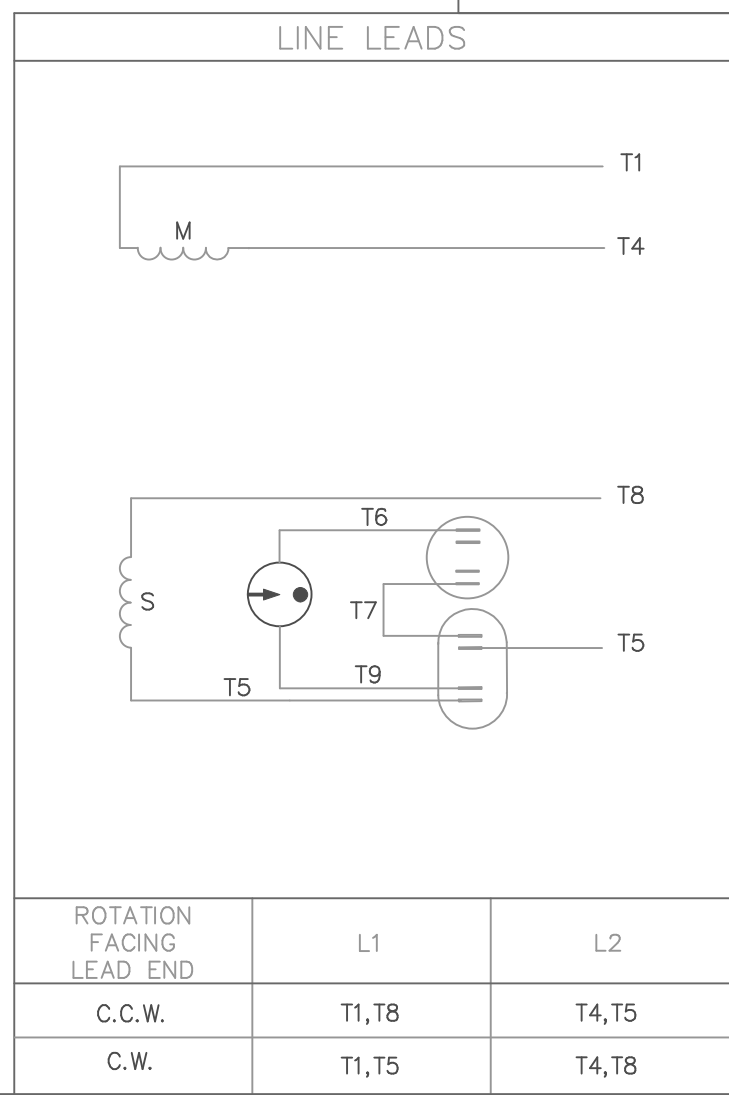
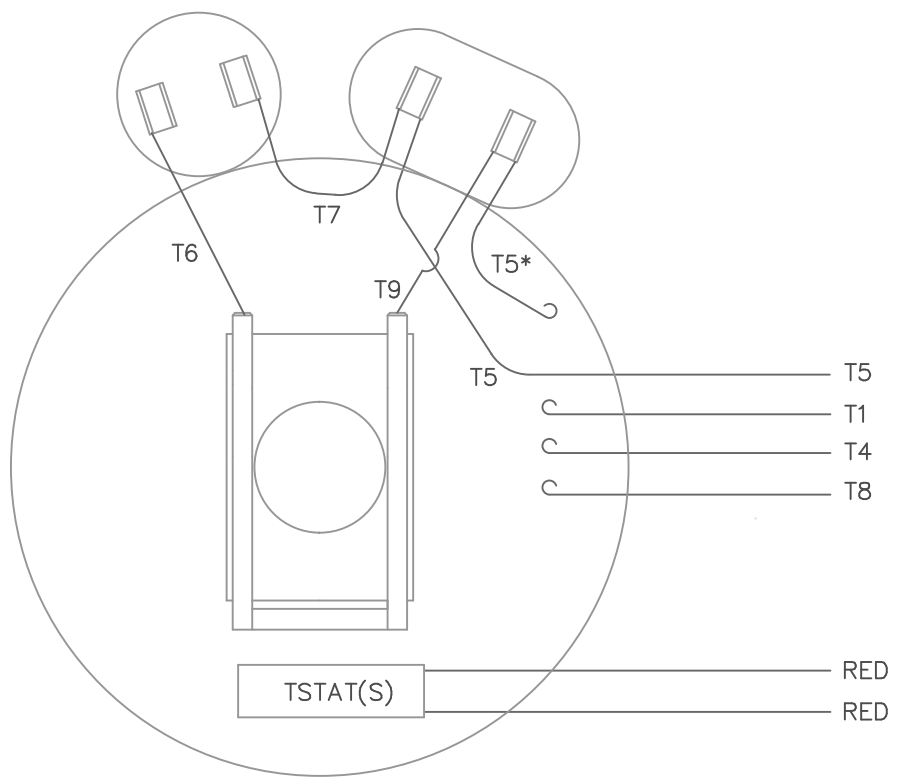
4

3

2

1

VIEW FROM OUTSIDE OF MOTOR AT SWITCH END.



\* THIS LEAD MAY BE WHITE

				TOLERANCES UNLESS OTHERWISE SPECIFIED		<b>LEESON</b> ELECTRIC CORPORATION			
				DECIMALS					
				.00	± .01	DRAWN MDN 10/13/98	TITLE		
				.000	± .005	CH'K'D.	EXTERNAL WIRING DIAGRAM TYPE "K" W/O PROTECTOR		
01	ADDED "THIS LEAD MAY BE WHITE" NOTE	BJB	09/15/04	.0000	± .0005	APPR.	MAT'L.	DECAL - 004018 TSTAT - 080582	
NO.	REVISION	BY	DATE	FRACTIONS	± 1/64	SCALE 1=1	<b>BRF</b>		
THIS DRAWING IN DESIGN AND DETAIL IS OUR PROPERTY AND MUST NOT BE USED EXCEPT IN CONNECTION WITH OUR WORK ALL RIGHTS OF DESIGN AND INVENTION ARE RESERVED						REF.			
						INCH/MM	FMF	A	005018-30



1051 CHEYENNE AVE.  
GRAFTON, WI 53024  
PH. 262-377-8810

**CERTIFICATION DATA SHEET**

**CONN. DIAGRAM:** 005018.30  
**OUTLINE:** 035732-1150  
**WINDING #:** K8228 DR 2 A

**CATALOG #:** 131848.00  
**MOUNTING:** F1 ONLY

**TYPICAL MOTOR PERFORMANCE DATA**

HP	kW	SYNC. RPM	F.L. RPM	FRAME	ENCLOSURE	KVA CODE	DESIGN
7 1/2&10	5.60&7.50	3600	3450&3450	182TZ	DPAO	G	L

PH	Hz	VOLTS	AMPS	START TYPE	DUTY	INSL	S.F.	AMB°C
1	60/60	230&230	31&42	ACROSS THE LINE	CONTINUOUS	F4	1.0	40

FULL LOAD EFF:	82.5&80	3/4 LOAD EFF:	82	1/2 LOAD EFF:	78.3	GTD. EFF	ELEC. TYPE
FULL LOAD PF:	93.5&96.5	3/4 LOAD PF:	92.5	1/2 LOAD PF:	91.9	80	CAP START CAP RUN

F.L. TORQUE	LOCKED ROTOR AMPS	L.R. TORQUE	B.D. TORQUE	F.L. RISE°C
11.17 LB-FT	235	26 LB-FT 233 %	30 LB-FT 269 %	105

SOUND PRESSURE @ 3 FT.	SOUND POWER	ROTOR WK^2	MAX. WK^2	SAFE STALL TIME	STARTS / HOUR	APPROX. MOTOR WGT
0 dBA	10 dBA	0.24 LB-FT^2	0.2 LB-FT^2	10 SEC.	0	98 LBS.

**\*\*\* SUPPLEMENTAL INFORMATION \*\*\***

DE BRACKET TYPE	ODE BRACKET TYPE	MOUNT TYPE	ORIENTATION	SEVERE DUTY	HAZARDOUS LOCATION	DRIP COVER	SCREENS	PAINT
STANDARD	STANDARD	RIGID	HORIZONTAL	FALSE	NONE	FALSE	NONE	GRAY - LIGHT (EPOXY)

BEARINGS		GREASE	SHAFT TYPE	SPECIAL DE	SPECIAL ODE	SHAFT MATERIAL	FRAME MATERIAL
DE	ODE						
BALL	BALL	POLYREX EM	SGL SPL EXT	1.125 x 3.50 IN SEK	NONE	AISI 1045 (C-240)	ROLLED STEEL
6206	6205						

THERMO-PROTECTORS				THERMISTORS	CONTROL	SPACE HEATERS
THERMOSTATS	PROTECTORS	WDG RTDs	BRG RTDs			
TSTATS 140(N/C)	AUTOMATIC	NONE	NONE	NONE	FALSE	NONE VOLTS

\*  
N  
O  
T  
E  
S  
\*

<b>INVERTER TORQUE:</b> NONE
<b>INV. HP SPEED RANGE:</b> NONE
<b>ENCODER:</b> NONE NONE NONE NONE NONE PPR
<b>BRAKE:</b> NONE NONE NONE P/N NONE NONE NONE NONE FT-LB NONE V NONE Hz



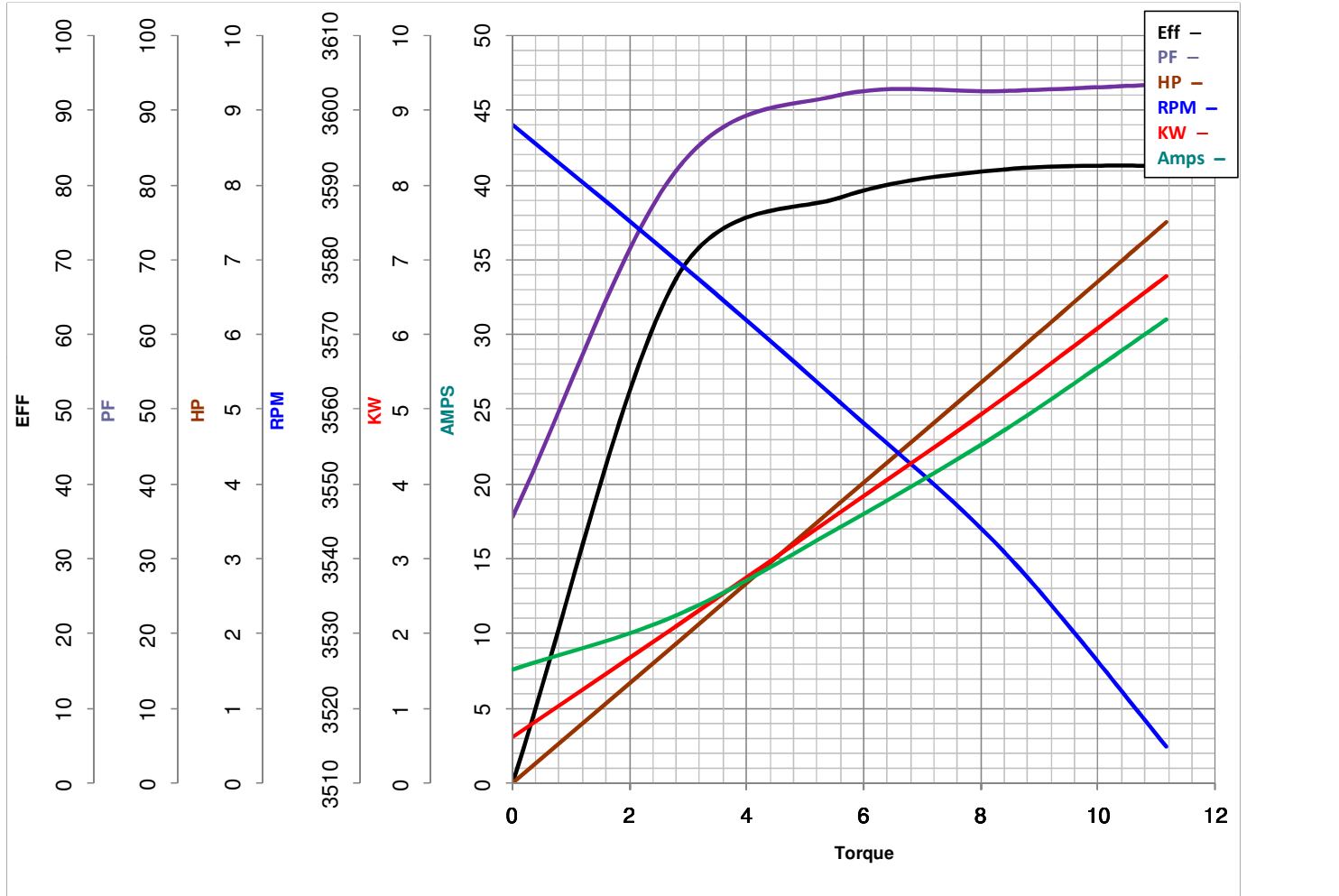
**LEESON ELECTRIC CORPORATION**  
 TYPICAL PERFORMANCE CURVE for AC MOTOR

Model No 131848.00

Catalog No 131848.00

Curve at 230 Volts      HP 7.5&10      PHASE 1  
60 HZ  
7.5 HP      VOLTS 230&230

HZ 60&60      RPM 3450&3450



Torque in Lb.Ft

FL TORQUE 11.17 Lb.Ft  
 BD TORQUE 30.0 Lb.Ft  
 LR TORQUE 26 Lb.Ft

FL AMPS 31  
 PU TORQUE 24.2 Lb.Ft  
 LR AMPS 235

WINDING K8228-2

Date 4/19/2018