

# PRODUCT INFORMATION PACKET



Model No: 131641.00

Catalog No: 131641.00

5 HP Close-Coupled Pump Motor, 1 phase, 3600 RPM, 208-230 V, 184JM Frame, ODP  
Close-Coupled Pump Motors



Regal and Leeson are trademarks of Regal Rexnord Corporation or one of its affiliated companies.  
©2021 Regal Rexnord Corporation, All Rights Reserved. MC017097E





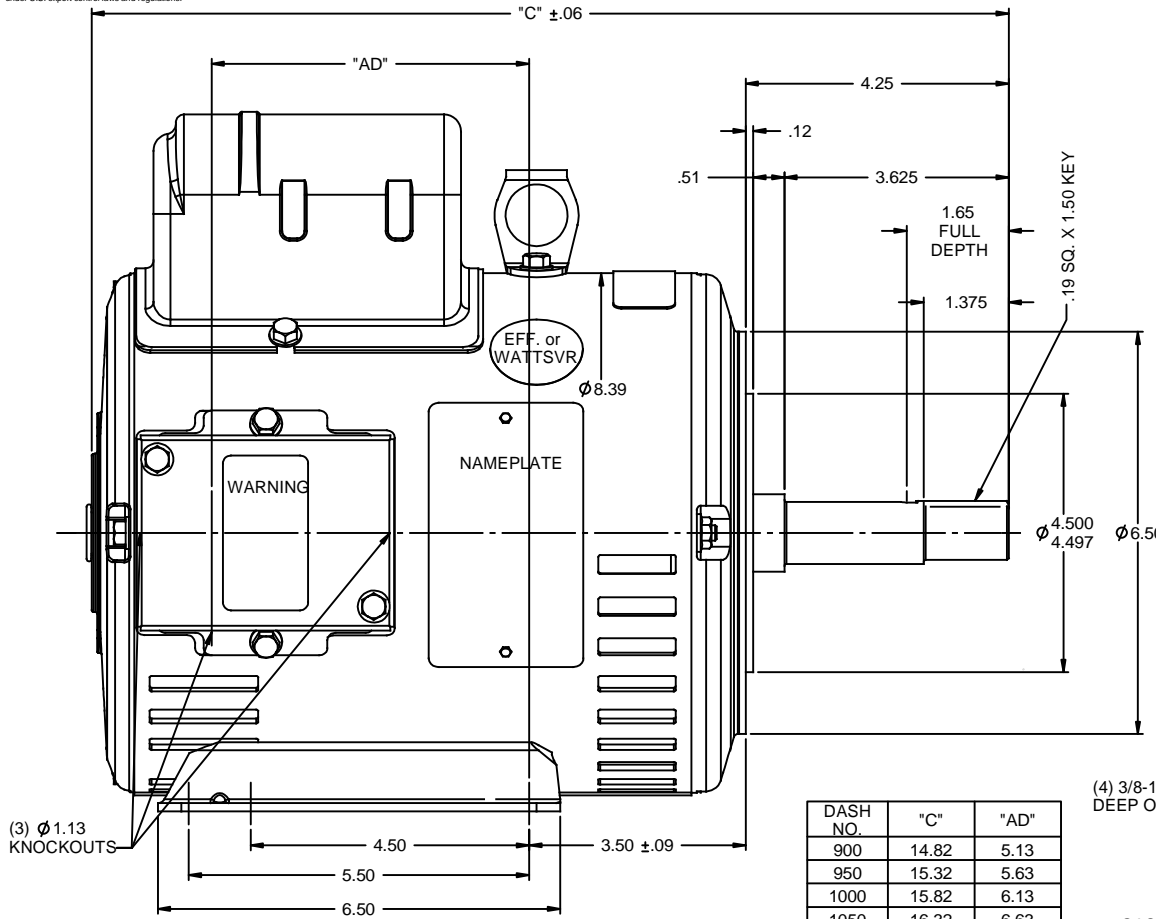
### Nameplate Specifications

Output HP	<b>5 Hp</b>	Output KW	<b>3.7 kW</b>
Frequency	<b>60 Hz</b>	Voltage	<b>208-230 V</b>
Current	<b>24.0-22.0 A</b>	Speed	<b>3500 rpm</b>
Service Factor	<b>1.15</b>	Phase	<b>1</b>
Efficiency	<b>80 %</b>	Power Factor	<b>92</b>
Duty	<b>Continuous</b>	Insulation Class	<b>F</b>
Design Code	<b>L</b>	KVA Code	<b>G</b>
Frame	<b>184JM</b>	Enclosure	<b>Drip Proof</b>
Thermal Protection	<b>No</b>	Ambient Temperature	<b>40 °C</b>
Drive End Bearing Size	<b>6207</b>	Opp Drive End Bearing Size	<b>6205</b>
UL	<b>Recognized</b>	CSA	<b>Y</b>
CE	<b>N</b>	IP Code	<b>22</b>
Number of Speeds	<b>1</b>		

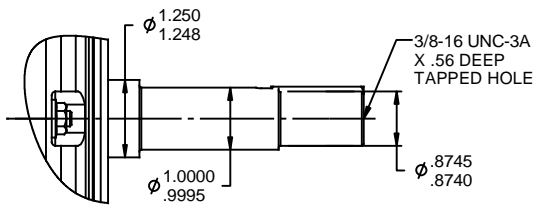
### Technical Specifications

Electrical Type	<b>Capacitor Start Capacitor Run</b>	Starting Method	<b>Across The Line</b>
Poles	<b>2</b>	Rotation	<b>Selective Counterclockwise</b>
Resistance Main	<b>.37 Ohms</b>	Mounting	<b>Rigid Base</b>
Motor Orientation	<b>Horizontal</b>	Drive End Bearing	<b>Ball</b>
Opp Drive End Bearing	<b>Ball</b>	Frame Material	<b>Rolled Steel</b>
Shaft Type	<b>JM</b>	Overall Length	<b>16.32 in</b>
Frame Length	<b>10.50 in</b>	Shaft Diameter	<b>0.875 in</b>
Shaft Extension	<b>4.21 in</b>	Assembly/Box Mounting	<b>F1 Only</b>
Outline Drawing	<b>035390-1050</b>	Connection Drawing	<b>005018.01</b>

RBC PROPRIETARY AND CONFIDENTIAL INFORMATION  
 This document is the property of REGAL BELOIT CORPORATION ("RBC") including its subsidiaries and divisions and contains proprietary information of RBC. This document is loaned on the express condition that neither it nor the information contained therein shall be disclosed to others without the express written consent of RBC, and that the information shall be used by the recipient only as approved expressly by RBC. This document shall be returned to RBC upon its request. This document may be subject to certain restrictions under U.S. export control laws and regulations.



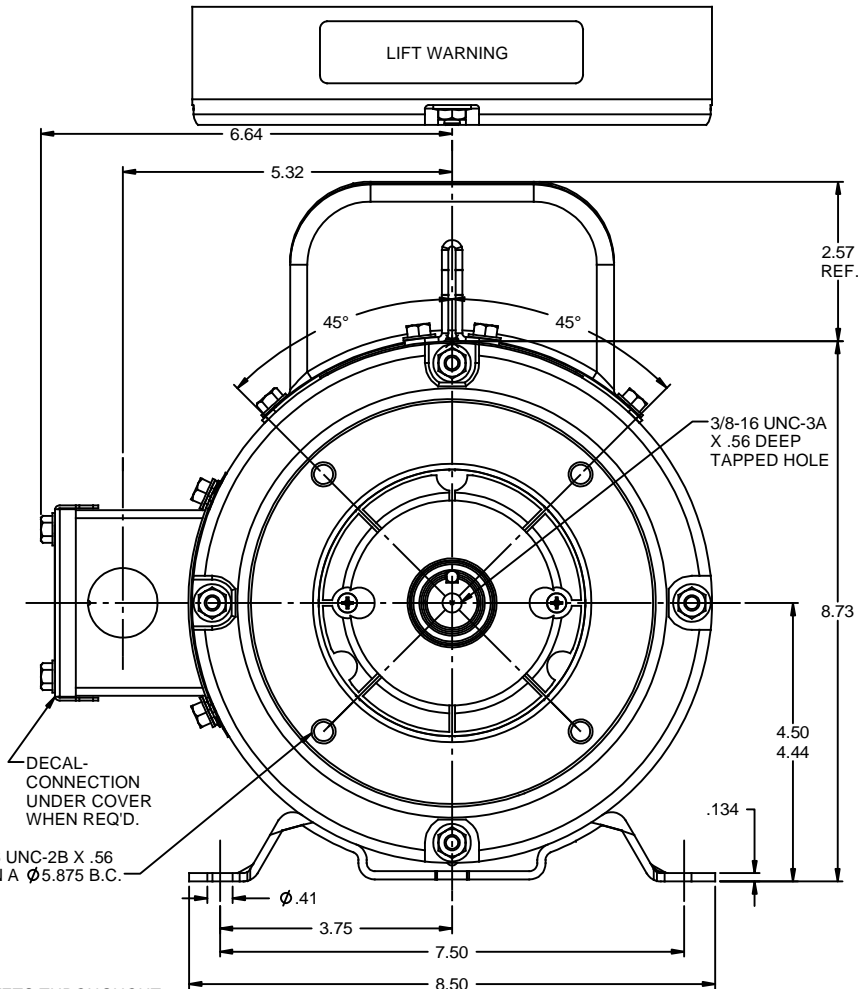
**SHAFT DETAIL**



DASH NO.	"C"	"AD"
900	14.82	5.13
950	15.32	5.63
1000	15.82	6.13
1050	16.32	6.63
1100	16.82	7.13
1150	17.32	7.63
1200	17.82	8.13

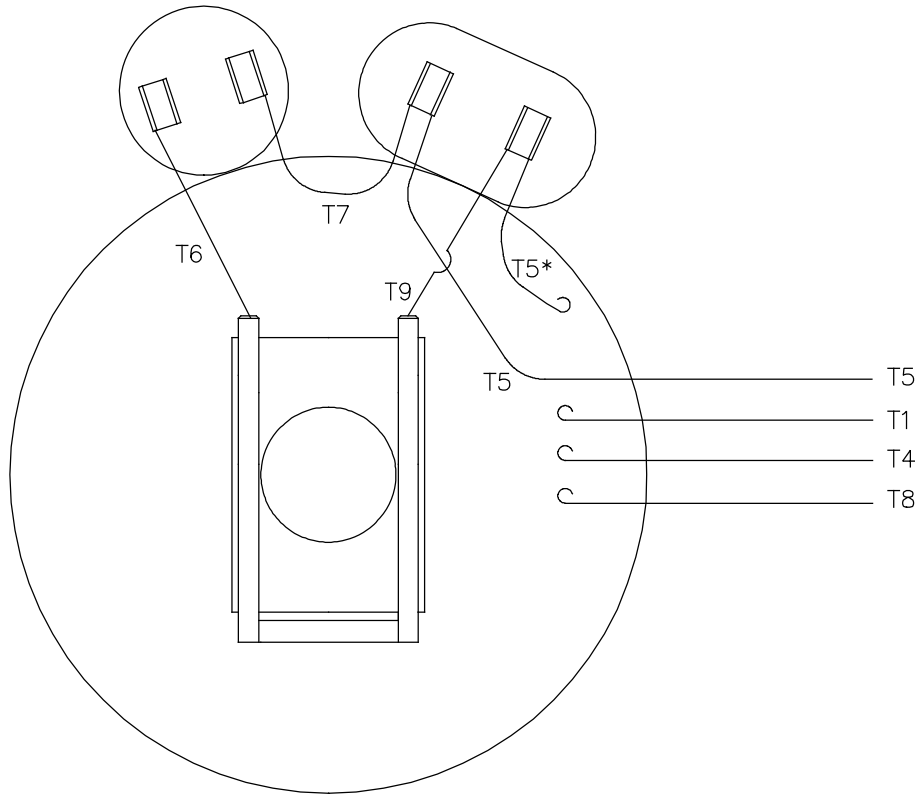
(4) 3/8-16 UNC-2B X .56 DEEP ON A Ø 5.875 B.C.

GASKETS THROUGHOUT  
 MAXIMUM FACE RUNOUT TO BE .004 T.I.R.  
 MAXIMUM PILOT ECCENTRICITY TO BE .004 T.I.R.  
 PERMISSIBLE SHAFT RUNOUT TO BE .004 T.I.R.

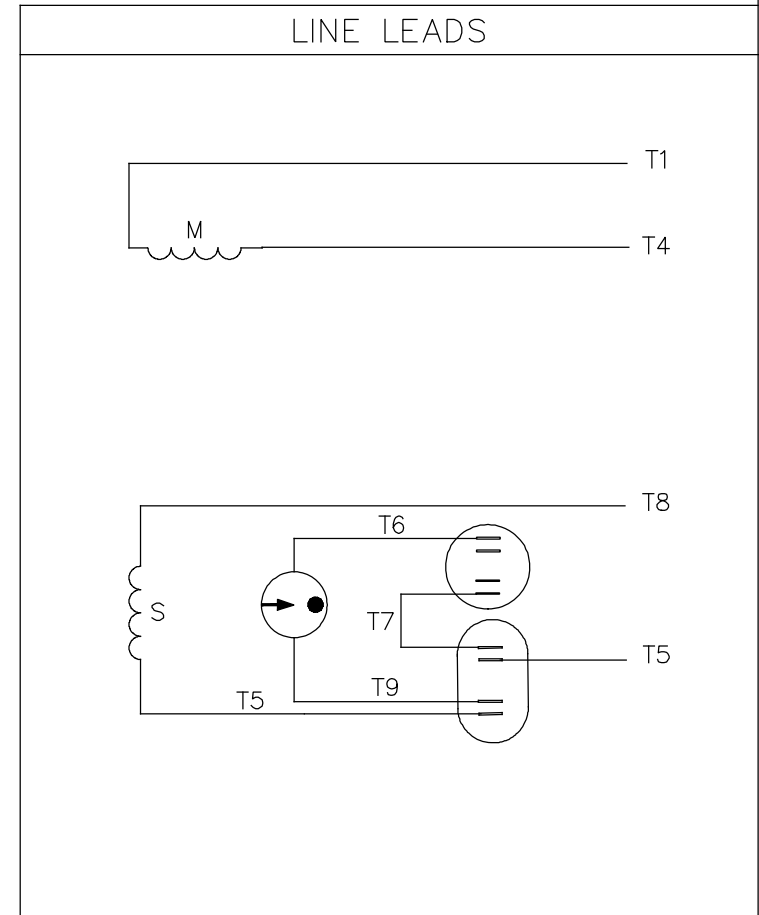


REVISION		BY & DATE	CHK	ANG	±1/2°	FINISH	REV	PREV	SIZE	DRAWING NO	REV
01	CHANGE SHAFT RUNOUT SPEC PER ISAAC 11-1521	LST 3/30/2011	XX	XXX	±.005						
-	UPDATED & REDRAWN IN SOLIDWORKS	LST 12/18/2009	XX	XXXX	±.0005						
TOLERANCES UNLESS SPECIFIED:						DRAWN PG 11/10/97					
X ±.1						CHK					
XX ±.03						APPR PG 11/10/97					
TITLE OUTLINE - 180JM FRAME						SCALE 1:2					
DRIP PROOF - JM PUMP MOUNT						REF 035220					
MATL						FMF 131805					
NETWORK FILE NAME 035390						PAGE OF					
THIRD ANGLE PROJECTION						DRAWING NO		B		REV	
						035390		01			

VIEW FROM OUTSIDE OF MOTOR AT SWITCH END.

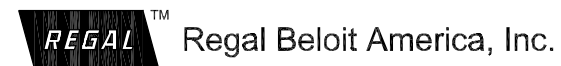


\* THIS LEAD MAY BE WHITE



ROTATION FACING LEAD END	L1	L2
C.C.W.	T1, T8	T4, T5
C.W.	T1, T5	T4, T8

NO.	REVISION	BY & DATE	CHK	ANG	TOLERANCES UNLESS SPECIFIED	
					DEC.	INCHES
21	LOGO UPDATED FROM LEESON TO MARATHON	AS 07/03/19	AS	.X	±.1	
20	ALTERNATE T5 LEAD MARKING WAS RED	RLW 7/22/02	KH	.XX	±.01	
19	ADDED ALTERNATE T5 LEAD MARKING	RLW 5/31/02	KH	.XXX	±.005	
18	REDRAWN ON CAD	DBT 06/24/97		.XXXX	±.0005	
					±1/2"	



TITLE	EXTERNAL WIRING DIAGRAM TYPE "K" W/O PROTECTOR	DRAWN	ADH 02/19/74
MAT'L.	DECAL - 004018	CHK	WRK 02/20/74
FINISH		APPD	JCW 02/20/74
		SCALE	1=1
		REF	
		FMF	
		PREV	

THIS DRAWING IN DESIGN AND DETAIL IS OUR PROPERTY AND MUST NOT BE USED EXCEPT IN CONNECTION WITH OUR WORK ALL RIGHTS OF DESIGN AND INVENTION ARE RESERVED THIS IS AN ELECTRONICALLY GENERATED DOCUMENT - DO NOT SCALE THIS PRINT		RFP	CAD FILE	00501801	SIZE	DRAWING NO.	REV.
		DIST	BRF-NLV		A	005018-01	21



**CERTIFICATION DATA SHEET**

**1051 CHEYENNE AVE.  
GRAFTON, WI 53024  
PH. 262-377-8810**

**CATALOG #:** 131641.00

**CONN. DIAGRAM:** 005018.01

**OUTLINE:** 035390-1050

**MOUNTING:** F1 ONLY

**WINDING #:** K8222 DR 2 A

**TYPICAL MOTOR PERFORMANCE DATA**

HP	kW	SYNC. RPM	F.L. RPM	FRAME	ENCLOSURE	KVA CODE	DESIGN
5	3.70	3600	3500	184JM	DP	G	L

PH	Hz	VOLTS	AMPS	START TYPE	DUTY	INSL	S.F.	AMB°C
1	60	208-230	24-22	ACROSS THE LINE	CONTINUOUS	F4	1.15	40

FULL LOAD EFF:	80	3/4 LOAD EFF:	78.5	1/2 LOAD EFF:	75.1	GTD. EFF		ELEC. TYPE	
FULL LOAD PF:	92	3/4 LOAD PF:	91.3	1/2 LOAD PF:	86.3	77		CAP START CAP RUN	

F.L. TORQUE	LOCKED ROTOR AMPS	L.R. TORQUE	B.D. TORQUE	F.L. RISE°C
7.5 LB-FT	141	19 LB-FT 253 %	19.2 LB-FT 256 %	44.9

SOUND PRESSURE @ 3 FT.	SOUND POWER	ROTOR WK^2	MAX. WK^2	SAFE STALL TIME	STARTS / HOUR	APPROX. MOTOR WGT
0 dBA	10 dBA	0.16 LB-FT^2	0.2 LB-FT^2	10 SEC.	0	95 LBS.

**\*\*\* SUPPLEMENTAL INFORMATION \*\*\***

DE BRACKET TYPE	ODE BRACKET TYPE	MOUNT TYPE	ORIENTATION	SEVERE DUTY	HAZARDOUS LOCATION	DRIP COVER	SCREENS	PAINT
C-FACE	STANDARD	RIGID	HORIZONTAL	FALSE	NONE	FALSE	NONE	BLUE - LEESON (ENAMEL)

BEARINGS		GREASE	SHAFT TYPE	SPECIAL DE	SPECIAL ODE	SHAFT MATERIAL	FRAME MATERIAL
DE	ODE						
BALL	BALL	POLYREX EM	JM	NONE	NONE	AISI 1045 (C-240)	ROLLED STEEL
6207	6205						

THERMO-PROTECTORS				THERMISTORS	CONTROL	SPACE HEATERS
THERMOSTATS	PROTECTORS	WDG RTDs	BRG RTDs			
NONE	NOT	NONE	NONE	NONE	FALSE	NONE VOLTS

\*  
N  
O  
T  
E  
S

<b>INVERTER TORQUE:</b> NONE
<b>INV. HP SPEED RANGE:</b> NONE
<b>ENCODER:</b> NONE
NONE NONE
NONE NONE PPR
<b>BRAKE:</b> NONE NONE
NONE P/N NONE
NONE NONE
NONE FT-LB NONE V NONE HZ

