

# PRODUCT INFORMATION PACKET



Model No: 131637.00

Catalog No: 131637.00

General Purpose Motor, 3 HP, 1 Ph, 60 Hz, 115/208-230 V, 3600 RPM, 182T Frame, TEFC



Regal and Leeson are trademarks of Regal Rexnord Corporation or one of its affiliated companies.

©2022 Regal Rexnord Corporation, All Rights Reserved. MC017097E







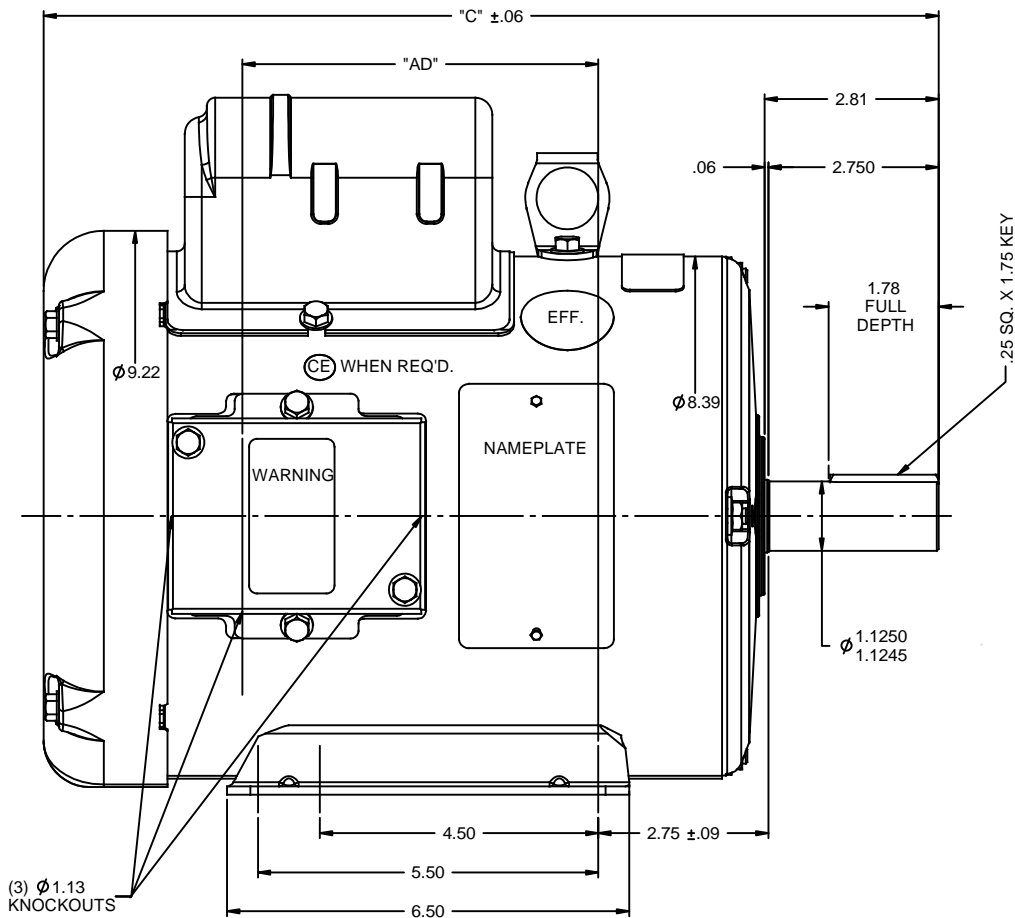
## Nameplate Specifications

Output HP	3 Hp	Output KW	2.2 kW
Frequency	60 Hz	Voltage	115/208-230 V
Current	26.8/14.4-13.4 A	Speed	3500 rpm
Service Factor	1.15	Phase	1
Efficiency	80 %	Power Factor	89
Duty	Continuous	Insulation Class	F
Design Code	L	KVA Code	G
Frame	182T	Enclosure	Totally Enclosed Fan Cooled
Thermal Protection	No Protection	Ambient Temperature	40 °C
Drive End Bearing Size	6206	Opp Drive End Bearing Size	6205
UL	Recognized	CSA	Y
CE	N	IP Code	43
Number of Speeds	1		

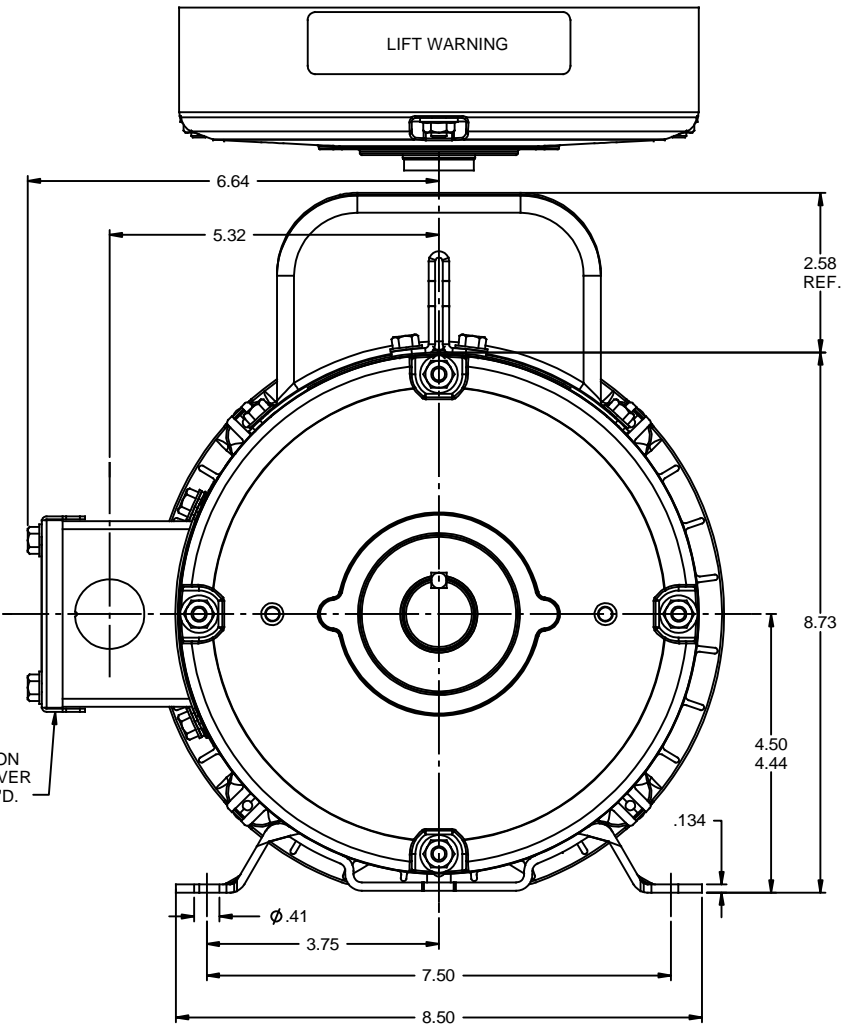
## Technical Specifications

Electrical Type	Capacitor Start Capacitor Run	Starting Method	Across The Line
Poles	2	Rotation	Selective Counterclockwise
Resistance Main	.12 Ohms	Mounting	Rigid Base
Motor Orientation	Horizontal	Drive End Bearing	Ball
Opp Drive End Bearing	Ball	Frame Material	Rolled Steel
Shaft Type	T	Overall Length	14.96 in
Frame Length	9.50 in	Shaft Diameter	1.125 in
Shaft Extension	2.75 in	Assembly/Box Mounting	F1 ONLY
Connection Drawing	005054.01	Outline Drawing	035352-950





DECAL-  
CONNECTION  
UNDER COVER  
WHEN REQ'D.



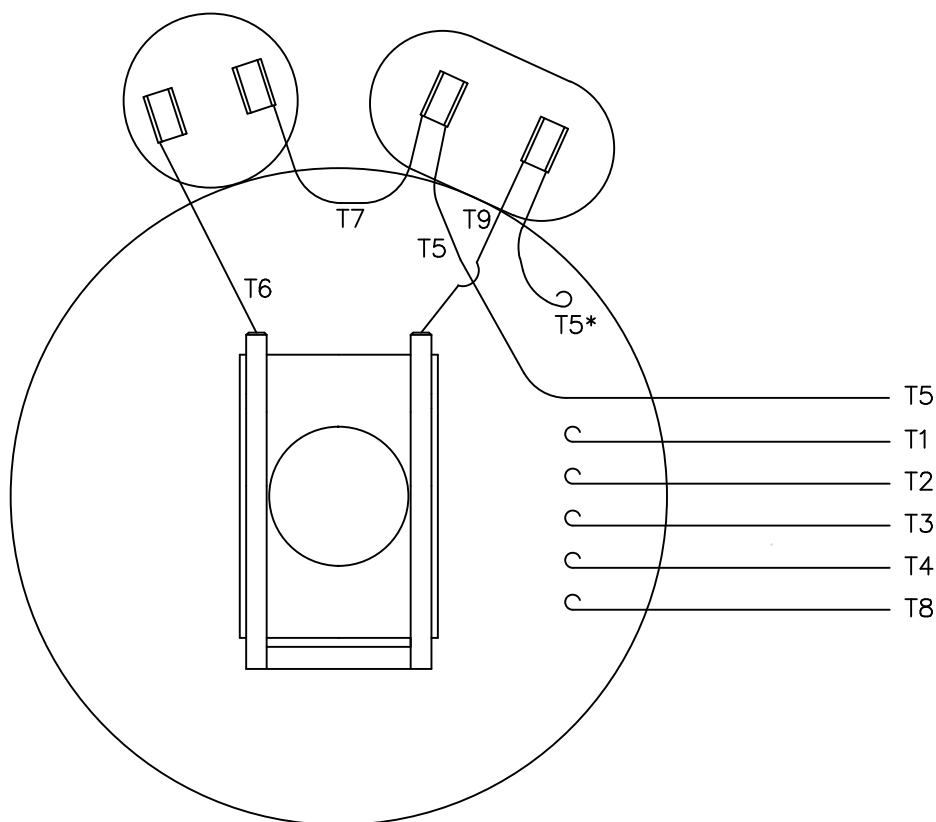
DASH NO.	"C"	"AD"
800	13.46	4.75
850	13.96	5.25
900	14.46	5.75
950	14.96	6.25
1000	15.46	6.75
1050	15.96	7.25
1100	16.46	7.75
1150	16.96	8.25
1200	17.46	8.75

GASKETS THROUGHOUT

		TOLERANCES UNLESS SPECIFIED		DRAWN PG 6/20/97	
		DEC	INCHES	CHK	RK 6/20/97
		X	±.1	APPR	
		XX	±.03	SCALE 1:2	
		XXX	±.005	REF	
- UPDATED & REDRAWN TO SOLIDWORKS		LST 12/15/2009	XX XXXX ±.0005	FMF	
NO		REVISION	BY & DATE	CHK	ANG ±1/2"
		THIRD ANGLE PROJECTION		RFP	PREV
		NETWORK FILE NAME		SIZE	DRAWING NO
				B	035352
				PAGE	OF
				REV	-

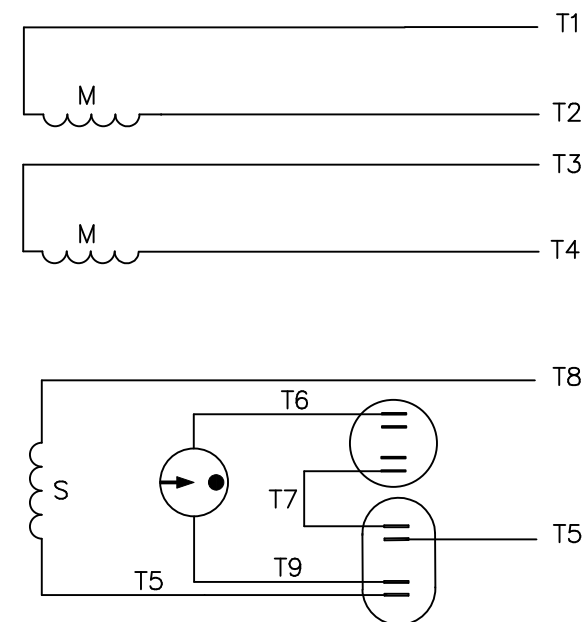


VIEW FROM OUTSIDE OF MOTOR AT SWITCH END.



\* THIS LEAD MAY BE WHITE

## LINE LEADS



	ROTATION FACING LEAD END	L1	L2	JOIN
HIGH VOLT	C.C.W.	T1	T4 T5	T2,T3 T8
	C.W.	T1	T4 T8	T2,T3 T5
LOW VOLT	C.C.W.	T1 T3,T8	T2,T4 T5	
	C.W.	T1,T3 T5	T2,T4 T8	

TOLERANCES  
UNLESS SPECIFIED

DEC. INCHES

.X ±.1

.XX ±.01

.XXX ±.005

.XXXX ±.0005

ANG ±1/2"

ELECTRIC MOTORS  
GEARMOTORS  
AND DRIVES

DRAWN JRW 09/27/74

CHK TEM

APPD 10/11/74

SCALE 1=1

REF A-005053

FMF W-K6343

PREV

11 ALTERNATE T5 LEAD MARKING WAS RED

RLW 8/6/02

.XX ±.01

10 ADDED ALTERNATE T5 LEAD MARKING

RLW 6/5/02

KH .XXX ±.005

09 REDRAWN TO CAD

DBT 05/28/97

.XXXX ±.0005

NO. REVISION

BY &amp; DATE

CHK ANG ±1/2"

TITLE EXT. WIRING DIAGRAM  
TYPE "K" W/O PROTECTOR

MAT'L. DECAL-004012

FINISH

THIS DRAWING IN DESIGN AND DETAIL IS OUR PROPERTY AND MUST NOT BE USED EXCEPT  
IN CONNECTION WITH OUR WORK ALL RIGHTS OF DESIGN AND INVENTION ARE RESERVED  
THIS IS AN ELECTRONICALLY GENERATED DOCUMENT - DO NOT SCALE THIS PRINT

RFP

CAD FILE 00505401

SIZE

DRAWING NO.

REV.

DIST BRF-NLV

A

005054-01

11





# CERTIFICATION DATA SHEET

**1051 CHEYENNE AVE.  
GRAFTON, WI 53024  
PH. 262-377-8810**

**CATALOG #:** 131637.00

**CONN. DIAGRAM:** 005054.01

**OUTLINE:** 035352-950

**MOUNTING:** F1 ONLY

**WINDING #:** K8223 FR 3 A

## TYPICAL MOTOR PERFORMANCE DATA

HP	kW	SYNC. RPM	F.L. RPM	FRAME	ENCLOSURE	KVA CODE	DESIGN
3	2.24	3600	3500	182T	TEFC	G	L

PH	Hz	VOLTS	AMPS	START TYPE	DUTY	INSL	S.F.	AMB°C
1	60	115/208-230	26.8/14.4-13.4	ACROSS THE LINE	CONTINUOUS	F4	1.15	40

<b>FULL LOAD EFF:</b>	80	<b>3/4 LOAD EFF:</b>	79.2	<b>1/2 LOAD EFF:</b>	70.8	<b>GTD. EFF</b>		<b>ELEC. TYPE</b>
<b>FULL LOAD PF:</b>	89	<b>3/4 LOAD PF:</b>	86.6	<b>1/2 LOAD PF:</b>	79.6	77		CAP START CAP RUN

F.L. TORQUE	LOCKED ROTOR AMPS	L.R. TORQUE	B.D. TORQUE	F.L. RISE°C
4.5 LB-FT	204 / 102	10.4 LB-FT 231 %	12.8 LB-FT 284 %	56

SOUND PRESSURE @ 3 FT.	SOUND POWER	ROTOR WK^2	MAX. WK^2	SAFE STALL TIME	STARTS / HOUR	APPROX. MOTOR WGT
0 dBA	10 dBA	0.16 LB-FT^2	0.2 LB-FT^2	10 SEC.	2	81 LBS.

## \*\*\* SUPPLEMENTAL INFORMATION \*\*\*

DE BRACKET TYPE	ODE BRACKET TYPE	MOUNT TYPE	ORIENTATION	SEVERE DUTY	HAZARDOUS LOCATION	DRIP COVER	SCREENS	PAINT
STANDARD	STANDARD	RIGID	HORIZONTAL	FALSE	NONE	FALSE	NONE	BLUE - LEESON (ENAMEL)

BEARINGS		GREASE	SHAFT TYPE	SPECIAL DE	SPECIAL ODE	SHAFT MATERIAL	FRAME MATERIAL
DE	ODE						
BALL	BALL	POLYREX EM	T	NONE	NONE	AISI 1045 (C-240)	ROLLED STEEL
6206	6205						

THERMO-PROTECTORS				THERMISTORS	CONTROL	SPACE HEATERS
THERMOSTATS	PROTECTORS	WDG RTDs	BRG RTDs			
NONE	NOT	NONE	NONE	NONE	FALSE	NONE VOLTS

\*

N

O

T

E

S

**INVERTER TORQUE:** NONE  
**INV. HP SPEED RANGE:** NONE

**ENCODER:** NONE  
NONE NONE  
NONE NONE PPR

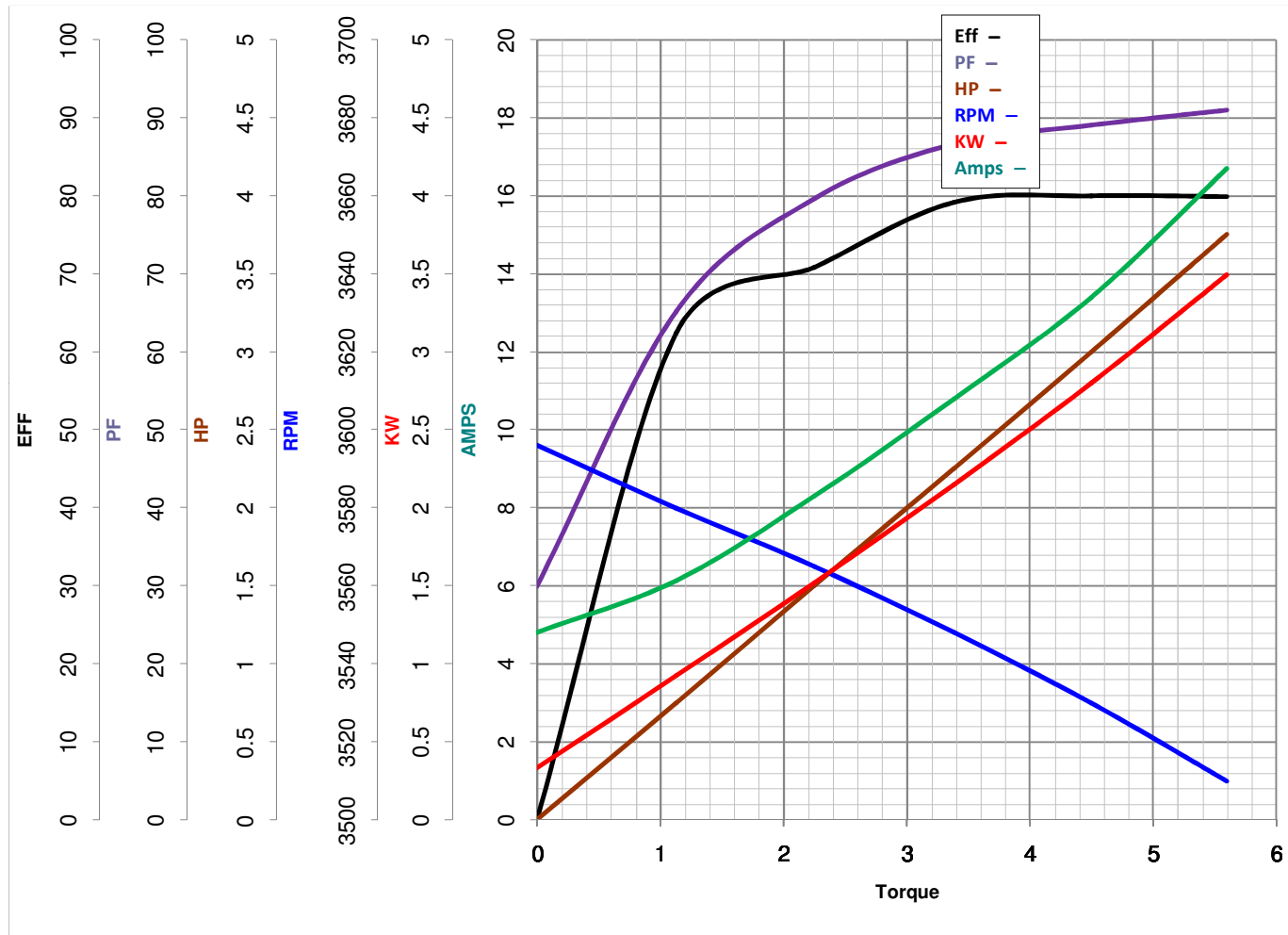
**BRAKE:** NONE NONE  
NONE P/N NONE  
NONE NONE  
NONE FT-LB NONE V NONE Hz





# LEESON ELECTRIC CORPORATION

## TYPICAL PERFORMANCE CURVE for AC MOTOR

Model No 131637.00Curve at 230  
60  
3Volts  
HZ  
HPHP 3.00PHASE 1VOLTS 115/208-230Catalog No 131637.00HZ 60RPM 3500

Torque in Lb.Ft

FL TORQUE 4.5 Lb.Ft  
 BD TORQUE 12.8 Lb.Ft  
 LR TORQUE 10.4 Lb.Ft

FL AMPS 26.8/14.4-13.4  
 PU TORQUE 10.0 Lb.Ft  
 LR AMPS 102

WINDING K8223-3

Date 4/9/2018