

# PRODUCT INFORMATION PACKET

Model No: 131610.00

Catalog No: 131610.00

Obsolete,

132479.00 - 3HP..1740RPM.182.TEFC.230/460V.3PH.60HZ.CONT.NOT.40C.1.15SF.C FACE.BRAKEMOTORS.C182'

Regal and are trademarks of Regal Rexnord Corporation or one of its affiliated companies.

©2022 Regal Rexnord Corporation, All Rights Reserved. MC017097E



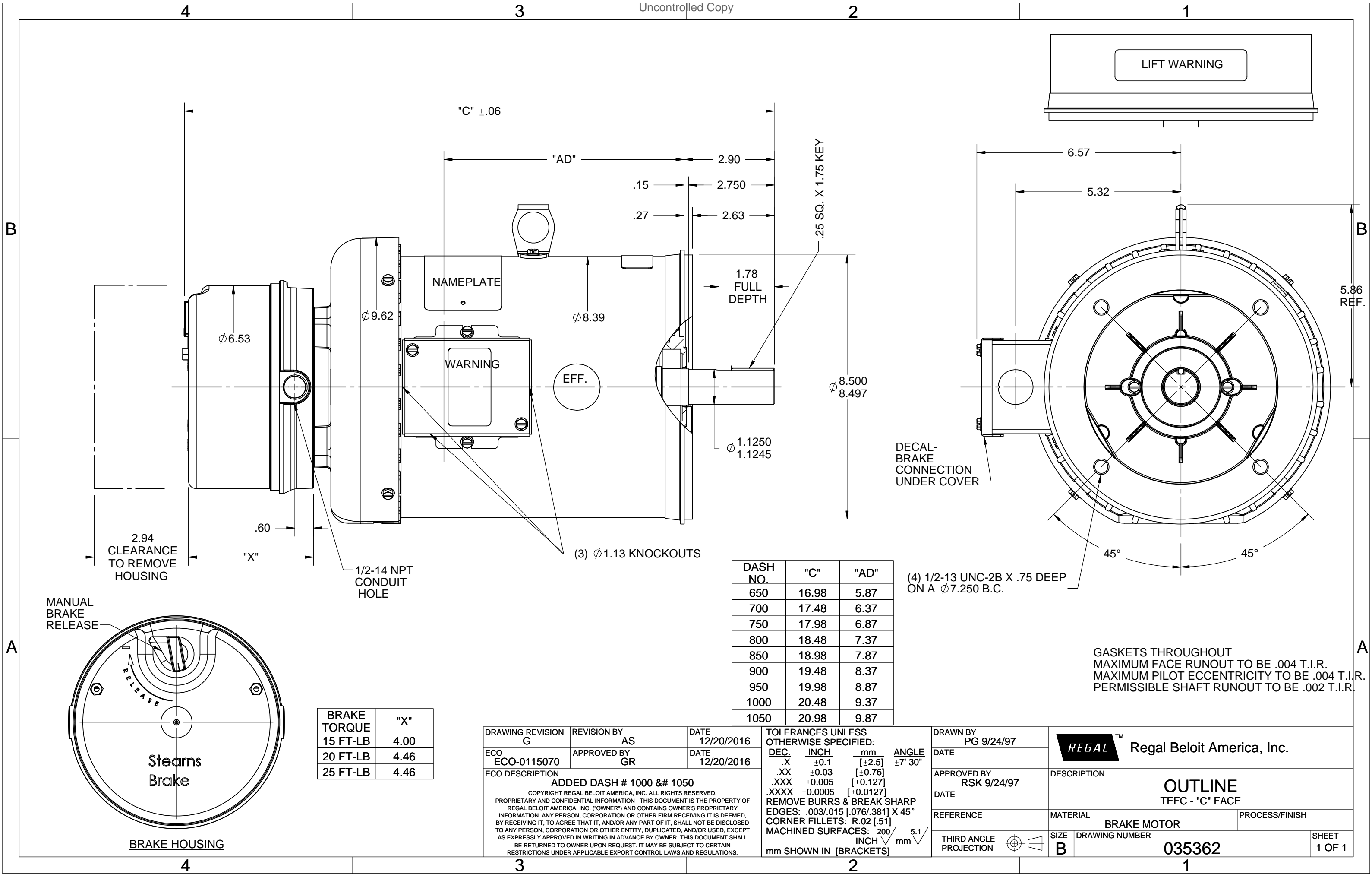
### Nameplate Specifications

Output HP	3 Hp	Output KW	2.2 kW
Frequency	60 Hz	Voltage	208-230/460 V
Current	9.2-9.0/4.5 A	Speed	1740 rpm
Service Factor	1.15	Phase	3
Efficiency	82.5 %	Power Factor	75.5
Duty	Continuous	Insulation Class	F
Design Code	B	KVA Code	K
Frame	182TC	Enclosure	Totally Enclosed Fan Cooled
Thermal Protection	No Protection	Ambient Temperature	40 °C
Drive End Bearing Size	6206	Opp Drive End Bearing Size	6205
UL	Recognized	CSA	Y
CE	Y	IP Code	43
Number of Speeds	1		

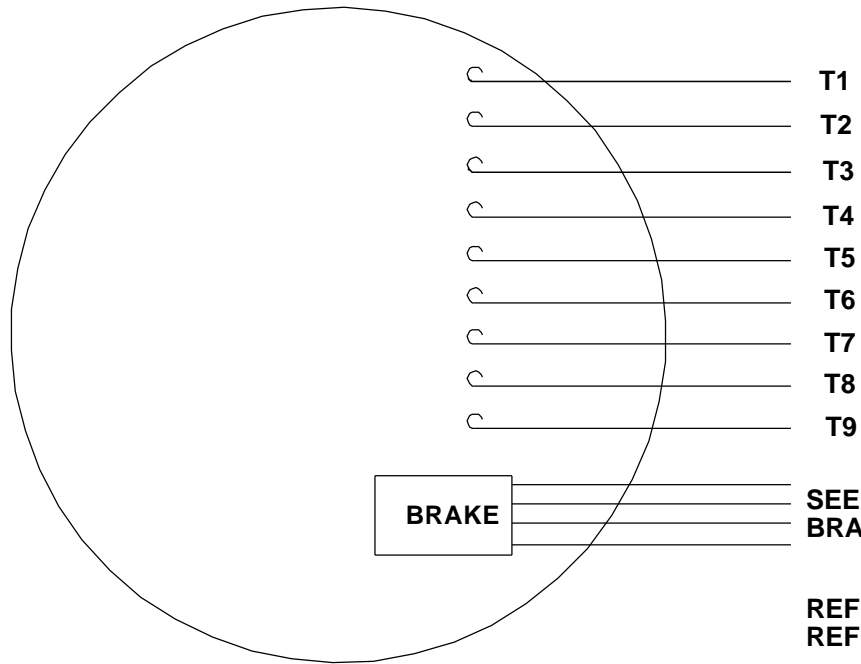
### Technical Specifications

Electrical Type	Squirrel Cage Induction Run	Starting Method	Across The Line
Poles	4	Rotation	Reversible
Resistance Main	1.19 Ohms	Mounting	Round
Drive End Bearing	Ball	Opp Drive End Bearing	Ball
Frame Material	Rolled Steel	Shaft Type	T
Assembly/Box Mounting	VERIFY		
Outline Drawing	035362-850	Connection Drawing	005010.15

This is an uncontrolled document once printed or downloaded and is subject to change without notice. Date Created:07/18/2022



VIEW FROM OUTSIDE OF MOTOR AT SWITCH END.

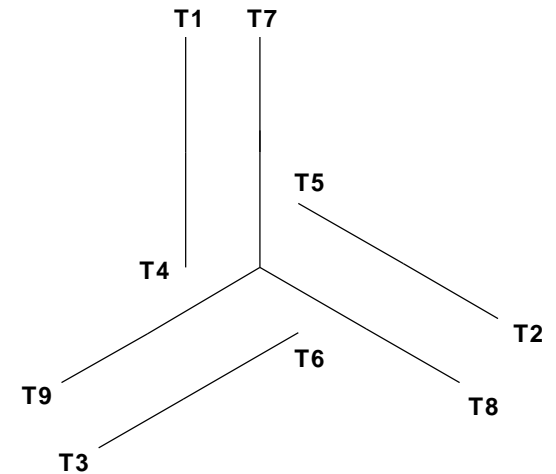


**CAUTION:**  
**LEAD WIRE INSULATION TO EXTEND**  
**MINIMUM OF 1/4" INTO CONNECTOR**  
**INSULATION**

**SEE TABLE FOR  
BRAKE CONNECTIONS**

**REF. DECAL (MOTOR) - 004014**  
**REF. DECAL (BRAKE) - 080034 (STEARNS & DINGS BRAKE)**

## LINE LEADS


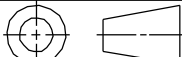


VOLTAGE	L1	L2	L3	JOIN & INSULATE
HIGH	T1	T2	T3	(T4, T7) (T5, T8) (T6, T9)
LOW	T1, T7	T2, T8	T3, T9	T4, T5, T6

## TYPE "T" W/O PROTECTOR

BRAKE CONNECTION						
VOLTAGE	STEARNS BRAKE			DINGS BRAKE		
	L1	L2	Join	L1	L2	Join
HIGH	1(RED)	2(RED)	3(BLACK) 4(BLACK)	2(BLACK)	4(YELLOW)	1(YELLOW) 3(BLACK)
LOW	1(RED) 3(BLACK)	2(RED) 4(BLACK)	-----	2(BLACK) 3(BLACK)	1(YELLOW) 4(YELLOW)	-----

RBC PROPRIETARY AND CONFIDENTIAL INFORMATION  
This document is the property of REGAL BELOIT CORPORATION ("RBC") including its subsidiaries and divisions and contains proprietary information of RBC. This document is loaned on the express condition that neither it nor the information contained therein shall be disclosed to others without the express written consent of RBC, and that the information shall be used by the recipient only as approved expressly by RBC. This document shall be returned to RBC upon its request. This document may be subject to certain restrictions under U.S. export control laws and regulations.

				TOLERANCES UNLESS SPECIFIED			ELECTRIC MOTORS GEARMOTORS AND DRIVES		DRAWN JJK 09/17/96		
				DEC	INCHES		CHK				
				.X	±.1		APPR				
				.XX	±.01						
--	REDRAWN IN SOLIDWORKS	VJB 02/08/11		.XXX	±.005	TITLE EXTERNAL WIRING DIAGRAM STANDARD 3 PHASE - DUAL VOLTAGE			SCALE 1:1		
01	ADDED DINGS AND BRAKE TABLE (PER CN114156)	TMZ 11/12/96		.XXXX	±.0005	MAT'L W/STEARNS OR DINGS DUAL VOLTAGE BRAKE CONN.			REF 005010-01		
NO	REVISION	BY & DATE	CHK	ANG	±1/2°	FINISH LEESON STOCK			FMF	OF	
<div>THIRD ANGLE PROJECTION</div> 			RFP		PREV			SIZE	DRAWING NO		REV
			NETWORK FILE NAME 00501015						A	005010-15	