

PRODUCT INFORMATION PACKET



Model No: 131603.00
Catalog No: 131603.00
Agricultural Motor, 3 HP, 1 Ph, 60 Hz, 230 V, 1800 RPM, 184TC Frame, TEFC



Regal and Leeson are trademarks of Regal Rexnord Corporation or one of its affiliated companies.
©2022 Regal Rexnord Corporation, All Rights Reserved. MC017097E





Nameplate Specifications

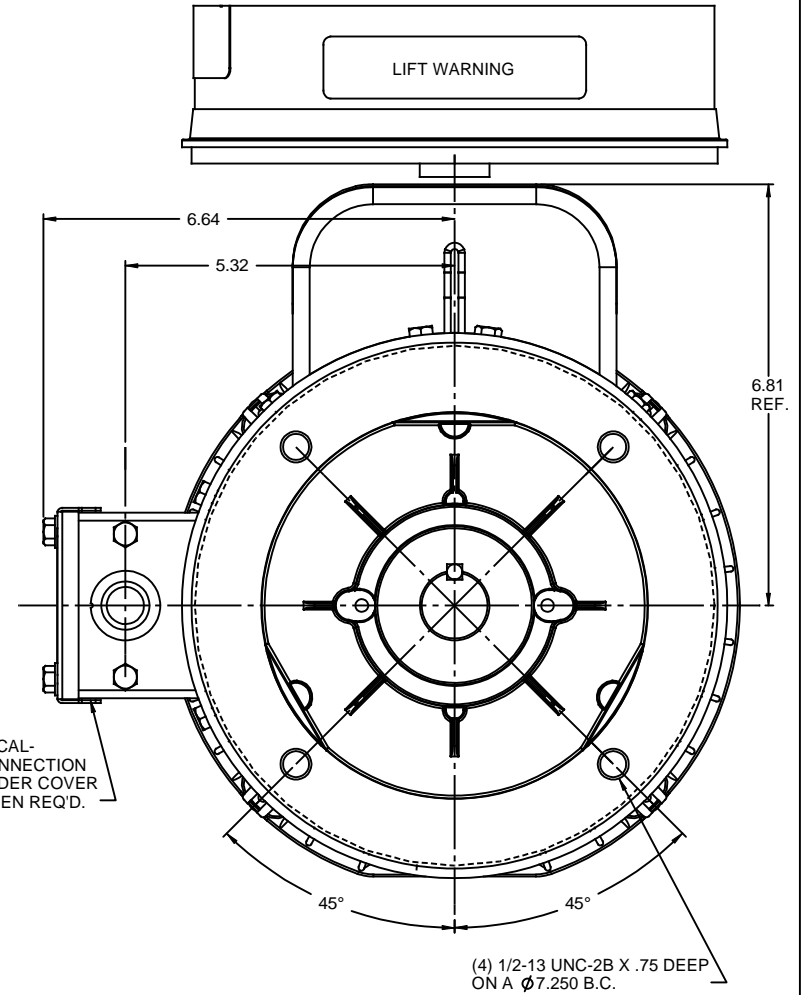
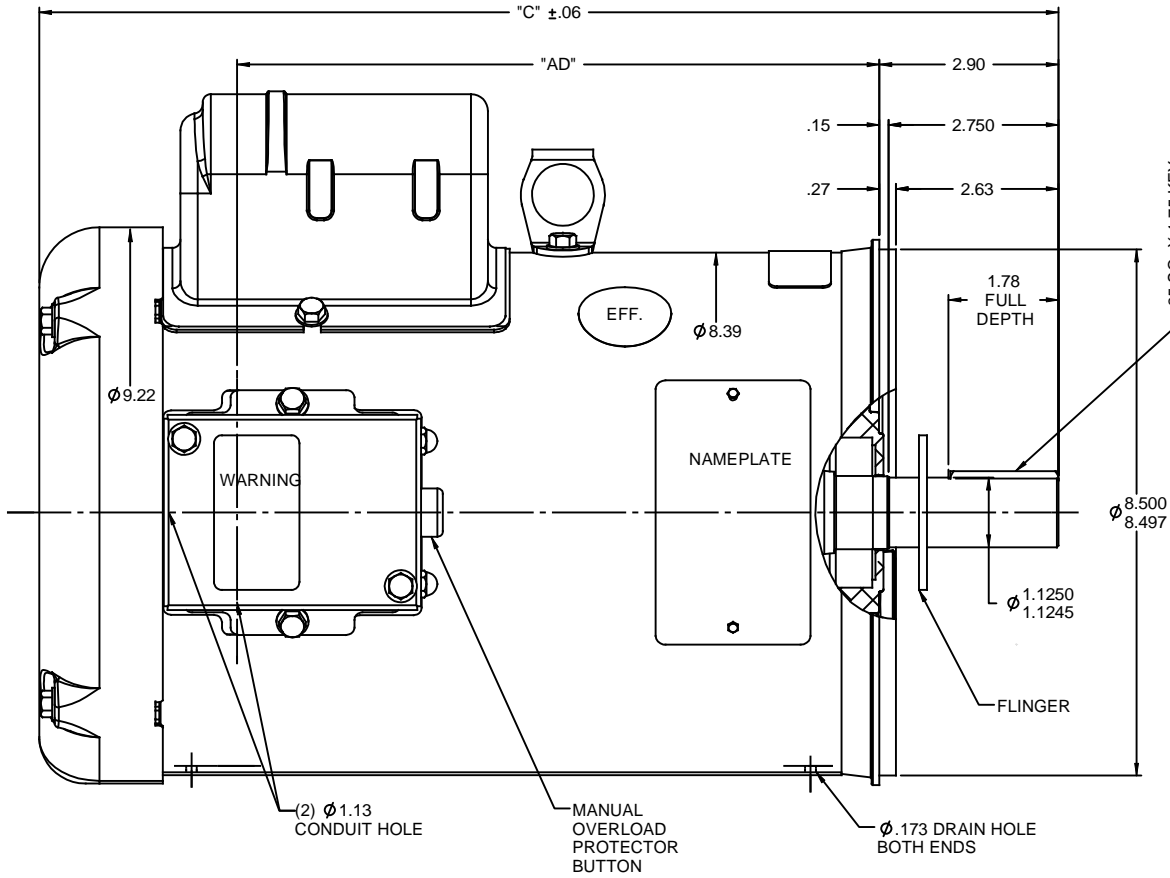
| | | | |
|------------------------|-------------------|----------------------------|------------------------------------|
| Output HP | 3 Hp | Output KW | 2.2 kW |
| Frequency | 60 Hz | Voltage | 230 V |
| Current | 19.0 A | Speed | 1740 rpm |
| Service Factor | 1.15 | Phase | 1 |
| Efficiency | 75.5 % | Power Factor | 68 |
| Duty | Continuous | Insulation Class | F |
| Design Code | L | KVA Code | K |
| Frame | 184TC | Enclosure | Totally Enclosed Fan Cooled |
| Thermal Protection | Manual | Ambient Temperature | 40 °C |
| Drive End Bearing Size | 6206 | Opp Drive End Bearing Size | 6205 |
| UL | Recognized | CSA | Y |
| CE | N | IP Code | 43 |
| Number of Speeds | 1 | | |

Technical Specifications

| | | | |
|-----------------------|--------------------------------------|-----------------------|-----------------------------------|
| Electrical Type | Capacitor Start Induction Run | Starting Method | Across The Line |
| Poles | 4 | Rotation | Selective Counterclockwise |
| Resistance Main | .498 Ohms | Mounting | Round |
| Motor Orientation | Horizontal | Drive End Bearing | Ball |
| Opp Drive End Bearing | Ball | Frame Material | Rolled Steel |
| Shaft Type | T | Overall Length | 16.44 in |
| Frame Length | 11.00 in | Shaft Diameter | 1.125 in |
| Shaft Extension | 2.75 in | Assembly/Box Mounting | F1 ONLY |
| Connection Drawing | 005110.01 | Outline Drawing | 035379-1100 |

This is an uncontrolled document once printed or downloaded and is subject to change without notice. Date Created:12/14/2022

RBC PROPRIETARY AND CONFIDENTIAL INFORMATION
 This document is the property of REGAL BELOIT CORPORATION ("RBC") including its subsidiaries and divisions and contains proprietary information of RBC. This document is loaned on the express condition that neither it nor the information contained therein shall be disclosed to others without the express written consent of RBC, and that the information shall be used by the recipient only as approved expressly by RBC. This document shall be returned to RBC upon its request. This document may be subject to certain restrictions under U.S. export control laws and regulations.



| DASH NO. | "C" | "AD" |
|----------|-------|-------|
| 750 | 12.94 | 6.87 |
| 800 | 13.44 | 7.37 |
| 850 | 13.94 | 7.87 |
| 900 | 14.44 | 8.37 |
| 950 | 14.94 | 8.87 |
| 1000 | 15.44 | 9.37 |
| 1050 | 15.94 | 9.87 |
| 1100 | 16.44 | 10.37 |
| 1150 | 16.94 | 10.87 |
| 1200 | 17.44 | 11.37 |

MOTOR SPECIAL FEATURES
 GASKETS THROUGHOUT
 DRAIN HOLES IN FRAME (UNPLUGGED)
 MANUAL RESET OVERLOAD BUTTON
 DOUBLE SEALED BALL BEARINGS
 FLINGER

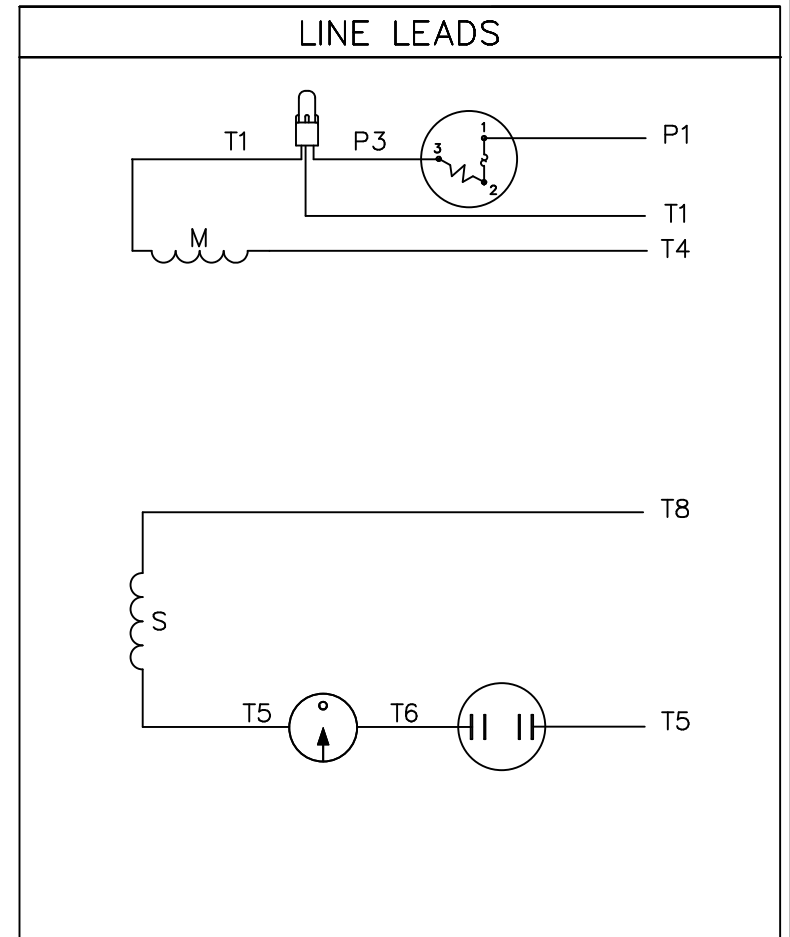
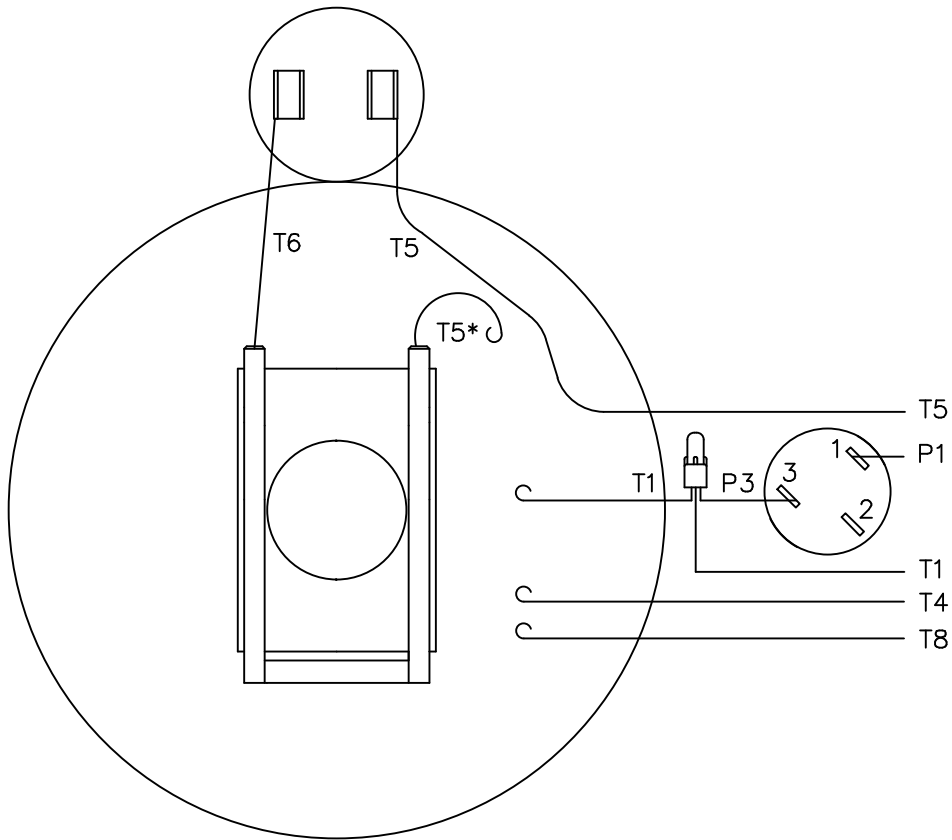
MAXIMUM FACE RUNOUT TO BE .004 T.I.R.
 MAXIMUM PILOT ECCENTRICITY TO BE .004 T.I.R.
 PERMISSIBLE SHAFT RUNOUT TO BE .002 T.I.R.

| REVISION | | BY & DATE | CHK | ANG | FINISH | SIZE | DRAWING NO | REV |
|-----------------------------------|--|----------------|-----|-----|-------------------|------|------------|-----|
| - UPDATED & REDRAWN ON SOLIDWORKS | | LST 11/11/2009 | XX | XXX | ±.0005 | B | 035379 | - |
| NO | | | RFP | | PREV | | | |
| THIRD ANGLE PROJECTION | | | | | | | | |
| | | | | | NETWORK FILE NAME | | | |

| TOLERANCES UNLESS SPECIFIED | DEC | INCHES | TITLE | DRAWN |
|-----------------------------|-----|--------|-----------------------|-------------|
| X | | ±.1 | OUTLINE - 180TC FRAME | PG 10/28/97 |
| .XX | | ±.01 | TEFC - "C" FACE | RK 10/28/97 |
| .XXX | | ±.005 | MATL FARM DUTY MOTOR | APPR |
| .XXX | | ±.0005 | | SCALE 1:2 |
| | | | | REF 035222 |
| | | | | FMF |
| | | | | PAGE OF |



VIEW FROM OUTSIDE OF MOTOR AT SWITCH END.



* THIS LEAD MAY BE WHITE

| | | | |
|--------------------------|----|--------|-----------------|
| ROTATION FACING LEAD END | L1 | L2 | JOIN & INSULATE |
| C.C.W. | P1 | T4, T5 | T1, T8 |
| C.W. | P1 | T4, T8 | T1, T5 |

| NO. | REVISION | BY & DATE | CHK | TOLERANCES UNLESS SPECIFIED | |
|-----|--------------------------------------|--------------|-----|-----------------------------|--------|
| | | | | DEC. | INCHES |
| 10 | ALTERNATE T5 LEAD MARKING WAS RED | RLW 8/6/02 | | .X | ±.1 |
| 09 | ADDED ALTERNATE T5 LEAD MARKING | RLW 6/5/02 | KH | .XX | ±.01 |
| 08 | ADDED MISSING "T4" LEAD FROM EB VIEW | DBT 09/22/97 | PG | .XXX | ±.005 |
| 07 | REDRAWN ON CAD | DBT 06/24/97 | | .XXXX | ±.0005 |
| | | | | ANG | ±1/2° |



ELECTRIC MOTORS
GEARMOTORS
AND DRIVES

| | |
|-------|--------------|
| DRAWN | JRW 10/21/75 |
| CHK | TEM |
| APPD | 10/23/75 |
| SCALE | 1=1 |
| REF | 005105 |
| FMF | W-C63236-2 |
| PREV | |

| | |
|--------|--|
| TITLE | EXTERNAL WIRING DIAGRAM TYPE "C" W/ PROTECTOR |
| MAT'L. | DECAL - 004015 |
| FINISH | |

THIS DRAWING IN DESIGN AND DETAIL IS OUR PROPERTY AND MUST NOT BE USED EXCEPT IN CONNECTION WITH OUR WORK ALL RIGHTS OF DESIGN AND INVENTION ARE RESERVED THIS IS AN ELECTRONICALLY GENERATED DOCUMENT - DO NOT SCALE THIS PRINT

| | | | | | |
|------|----------|----------|------|-------------|------|
| RFP | CAD FILE | 00511001 | SIZE | DRAWING NO. | REV. |
| DIST | NLV | | A | 005110-01 | 10 |

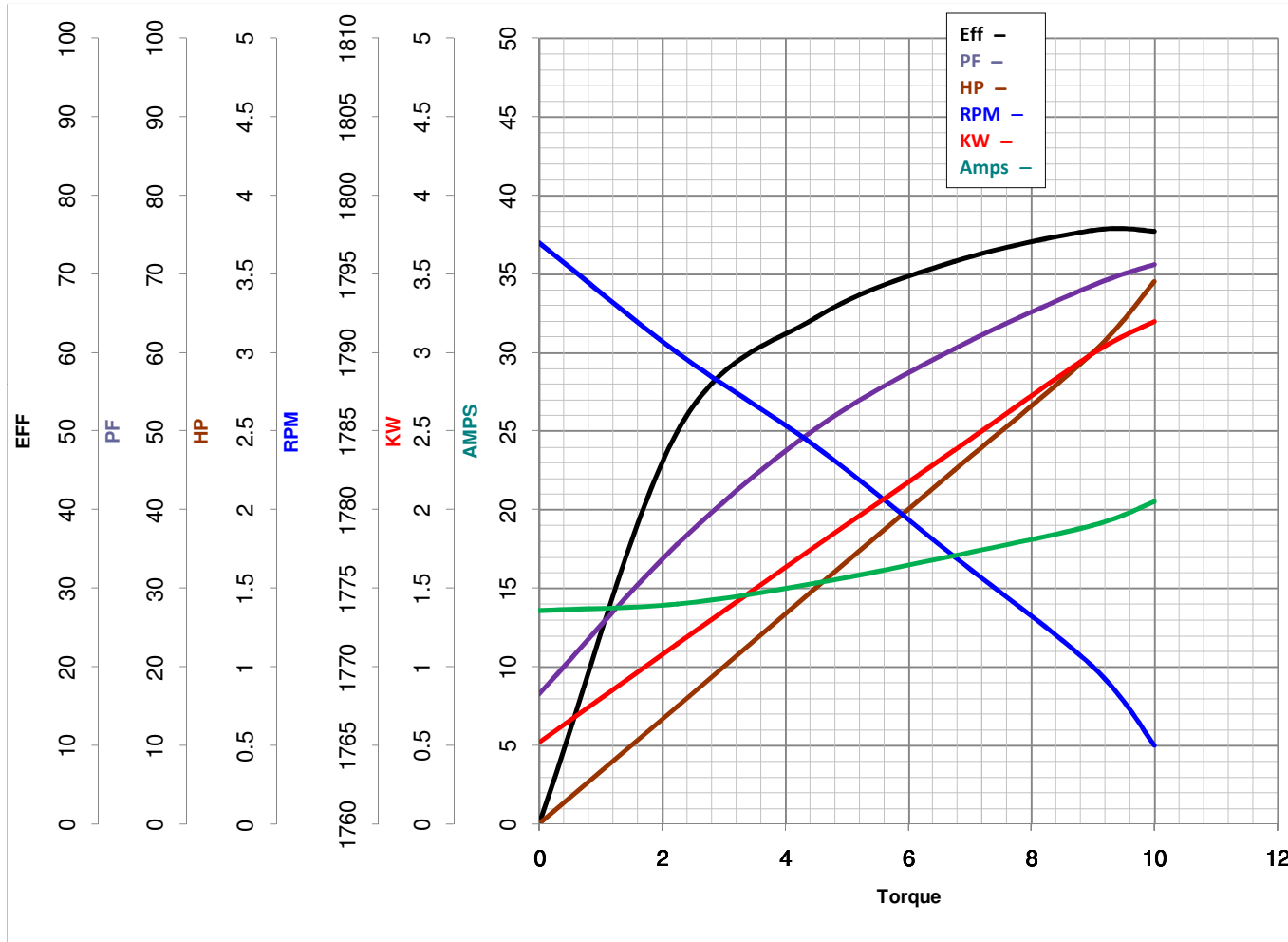


LEESON ELECTRIC CORPORATION
TYPICAL PERFORMANCE CURVE for AC MOTOR

Model No 131603.00

Catalog No 131603.00

Curve at 230 Volts HP 3.00 PHASE 1
60 HZ
3 HP VOLTS 230
HZ 60 RPM 1740



Torque in Lb.Ft

FL TORQUE 19 Lb.Ft
BD TORQUE 27.9 Lb.Ft
LR TORQUE 37.45 Lb.Ft

FL AMPS 19
PU TORQUE 23.5 Lb.Ft
LR AMPS 136

WINDING C8429-2

Date 3/26/2018