

# PRODUCT INFORMATION PACKET



Model No: 131556.00

Catalog No: 131556.00

Special Voltage Motor, 2 HP, 1 Ph, 50 Hz, 220 V, 1500 RPM, 182T Frame, TEFC



Regal and Leeson are trademarks of Regal Rexnord Corporation or one of its affiliated companies.

©2022 Regal Rexnord Corporation, All Rights Reserved. MC017097E





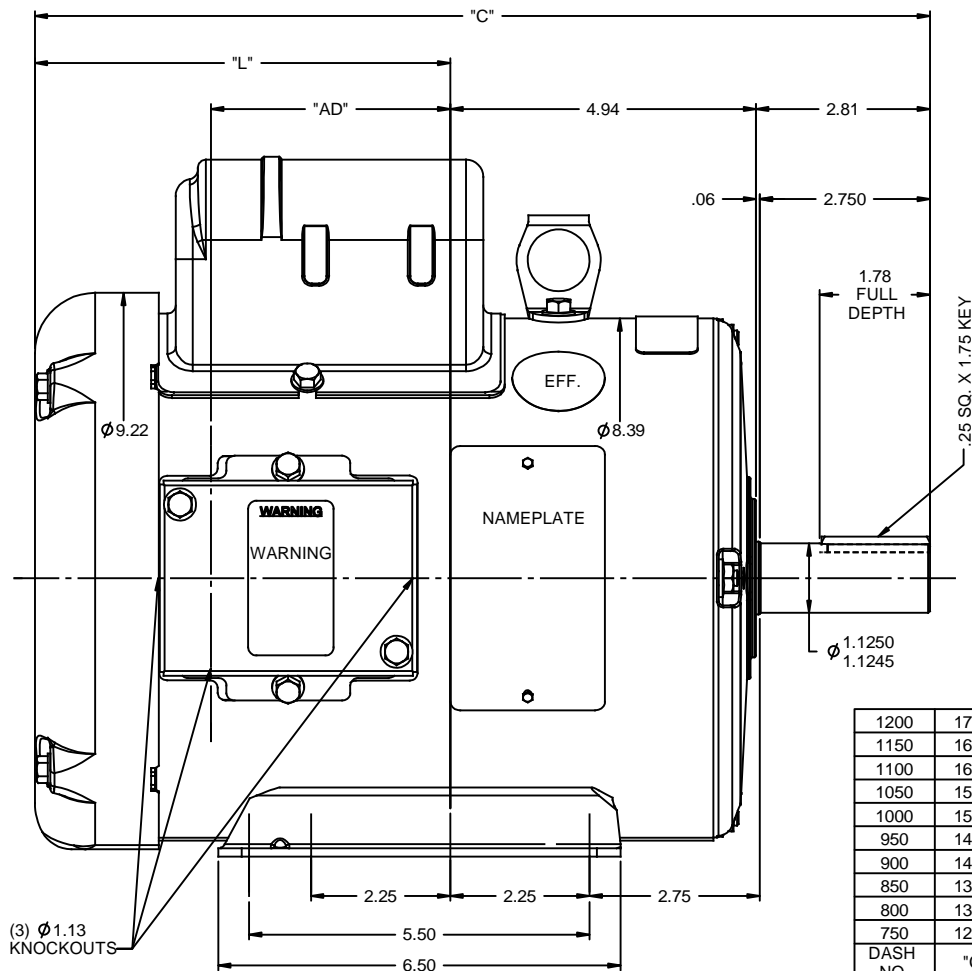
### Nameplate Specifications

Output HP	2 Hp	Output KW	1.5 kW
Frequency	50 Hz	Voltage	220 V
Current	11.2 A	Speed	1440 rpm
Service Factor	1	Phase	1
Efficiency	72 %	Power Factor	77
Duty	Continuous	Insulation Class	F
Design Code	NO DESIGN CODE	KVA Code	J
Frame	182T	Enclosure	Totally Enclosed Fan Cooled
Thermal Protection	No Protection	Ambient Temperature	40 °C
Drive End Bearing Size	6206	Opp Drive End Bearing Size	6205
UL	Recognized	CSA	Y
CE	Y	IP Code	44
Number of Speeds	1		

### Technical Specifications

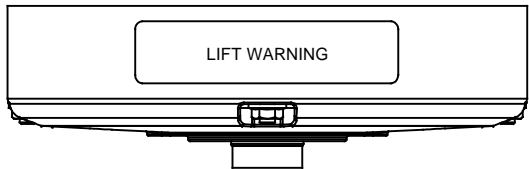
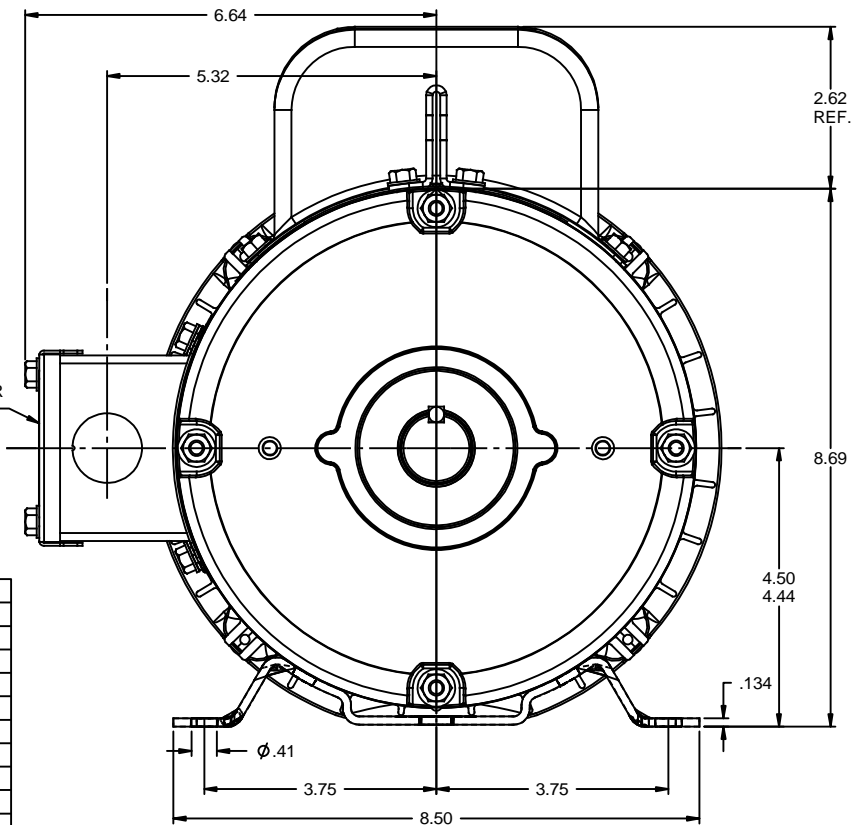
Electrical Type	Capacitor Start Induction Run	Starting Method	Across The Line
Poles	4	Rotation	Selective Counterclockwise
Resistance Main	0 Ohms	Mounting	Rigid Base
Motor Orientation	Horizontal	Drive End Bearing	Ball
Opp Drive End Bearing	Ball	Frame Material	Rolled Steel
Shaft Type	T	Overall Length	15.46 in
Frame Length	10.50 in	Shaft Diameter	1.125 in
Shaft Extension	2.75 in	Assembly/Box Mounting	F1 ONLY
Connection Drawing	005403.01	Outline Drawing	035717-1050


This is an uncontrolled document once printed or downloaded and is subject to change without notice. Date Created:11/28/2022



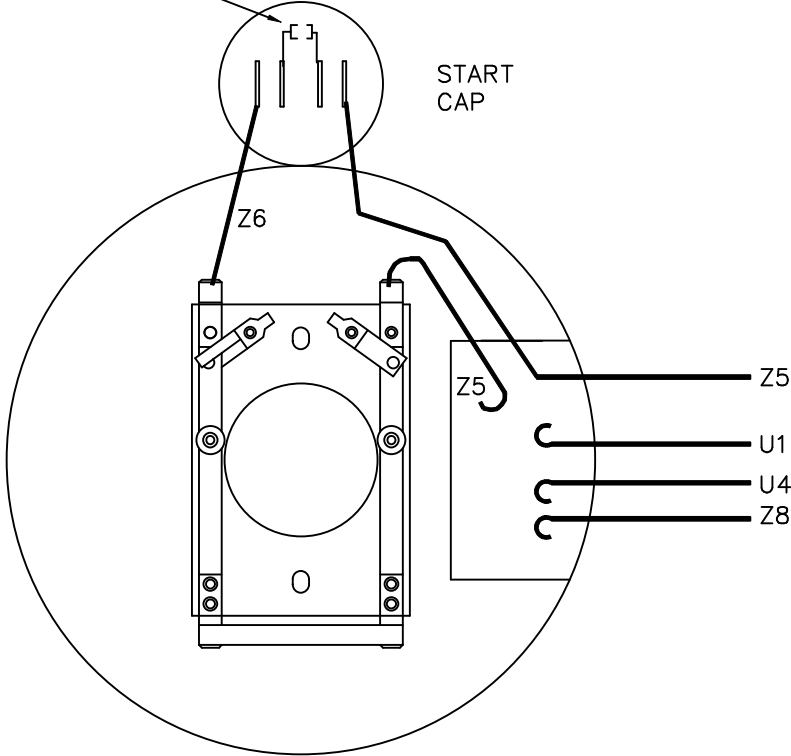
1200	17.46	9.71	6.50
1150	16.96	9.21	6.00
1100	16.46	8.71	5.50
1050	15.46	8.21	5.00
1000	15.46	7.71	4.50
950	14.96	7.21	4.00
900	14.46	6.71	3.50
850	13.96	6.21	3.00
800	13.46	5.71	2.50
750	12.96	5.21	2.00
DASH NO.	"C"	"L"	"AD"

DECAL-  
CONNECTION  
UNDER COVER  
WHEN REQ'D.

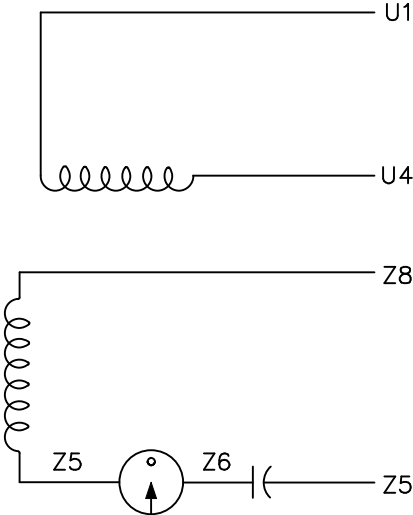


				TOLERANCES UNLESS SPECIFIED	 <b>REGAL-BELOIT CORPORATION</b>	DRAWN LST 2/19/09	
				DEC INCHES		CHK	
				X ±.1		APPR	
				XX ±.03		SCALE 1:2	
				XXX ±.005		REF	
				XXXX ±.0005	MATL	FMF	
NO	REVISION	BY & DATE	CHK ANG ±1/2°	FINISH	PAGE OF		
	THIRD ANGLE PROJECTION		RFP	PREV	SIZE B	DRAWING NO	REV
				NETWORK FILE NAME	035717		

RESISTOR WHEN REQUIRED



LINE LEADS



ROTATION FACING LEAD END	L1	L2
C.C.W. ROT.	U1, Z8	U4, Z5
C.W. ROT.	U1, Z5	U4, Z8

VIEW FROM OUTSIDE OF MOTOR AT SWITCH END.

TYPE "C" W/O PROT.  
REF. DECAL 080670

				TOLERANCES UNLESS OTHERWISE SPECIFIED		LEESON ELECTRIC CORPORATION					
				DECIMALS							
				.00	± .01	DRAWN TMZ 04/14/97	TITLE EXTERNAL WIRING DIAGRAM TYPE "C" W/O PROTECTOR				
				.000	± .005	CH'K'D.					
				.0000	± .0005	APPR.	MAT'L.				
NO.	REVISION		BY	DATE	FRACTIONS	± 1/64					SCALE
THIS DRAWING IN DESIGN AND DETAIL IS OUR PROPERTY AND MUST NOT BE USED EXCEPT IN CONNECTION WITH OUR WORK ALL RIGHTS OF DESIGN AND INVENTION ARE RESERVED					ANGLES	± 1/2'	REF.	5033-01	FINISH	SIZE	DRAWING NO.
					INCH/MM		FMF	121326	BABSON	A	005403-01



# CERTIFICATION DATA SHEET

**1051 CHEYENNE AVE.  
GRAFTON, WI 53024  
PH. 262-377-8810**

**CONN. DIAGRAM:** 005403.01

**CATALOG #:** 131556.00

**OUTLINE:** 035717-1050

**MOUNTING:** F1 ONLY

**WINDING #:** C8412 FR 5 A

## TYPICAL MOTOR PERFORMANCE DATA

HP	kW	SYNC. RPM	F.L. RPM	FRAME	ENCLOSURE	KVA CODE	DESIGN
2	1.49	1500	1440	182T	TEFC	J	NO DESIGN CODE

PH	Hz	VOLTS	AMPS	START TYPE	DUTY	INSL	S.F.	AMB°C
1	50	220	11.2	ACROSS THE LINE	CONTINUOUS	F4	1.0	40

<b>FULL LOAD EFF:</b>	72	<b>3/4 LOAD EFF:</b>	71.7	<b>1/2 LOAD EFF:</b>	67.6	<b>GTD. EFF</b>		<b>ELEC. TYPE</b>
<b>FULL LOAD PF:</b>	77	<b>3/4 LOAD PF:</b>	70.2	<b>1/2 LOAD PF:</b>	59.4	68		CAP START IND RUN

F.L. TORQUE	LOCKED ROTOR AMPS	L.R. TORQUE	B.D. TORQUE	F.L. RISE°C
7.2 LB-FT	69	21.8 LB-FT 303 %	16.3 LB-FT 226 %	95

SOUND PRESSURE @ 3 FT.	SOUND POWER	ROTOR WK^2	MAX. WK^2	SAFE STALL TIME	STARTS / HOUR	APPROX. MOTOR WGT
0 dBA	10 dBA	0.459 LB-FT^2	0.5 LB-FT^2	0 SEC.	0	98 LBS.

## \*\*\* SUPPLEMENTAL INFORMATION \*\*\*

DE BRACKET TYPE	ODE BRACKET TYPE	MOUNT TYPE	ORIENTATION	SEVERE DUTY	HAZARDOUS LOCATION	DRIP COVER	SCREENS	PAINT
STANDARD	STANDARD	RIGID	HORIZONTAL	FALSE	NONE	FALSE	NONE	BLUE - LEESON (ENAMEL)

BEARINGS		GREASE	SHAFT TYPE	SPECIAL DE	SPECIAL ODE	SHAFT MATERIAL	FRAME MATERIAL
DE	ODE						
BALL	BALL	POLYREX EM	T	NONE	NONE	AISI 1045 (C-240)	ROLLED STEEL
6206	6205						

THERMO-PROTECTORS				THERMISTORS	CONTROL	SPACE HEATERS
THERMOSTATS	PROTECTORS	WDG RTDs	BRG RTDs			
NONE	NOT	NONE	NONE	NONE	FALSE	NONE VOLTS

\*

N

O

T

E

S

**INVERTER TORQUE:** NONE  
**INV. HP SPEED RANGE:** NONE

**ENCODER:** NONE  
NONE NONE  
NONE NONE PPR

**BRAKE:** NONE NONE  
NONE P/N NONE  
NONE NONE  
NONE FT-LB NONE V NONE Hz



# LEESON ELECTRIC CORPORATION

## TYPICAL PERFORMANCE CURVE for AC MOTOR

Model No 131556.00Catalog No 131556.00

Curve at

220

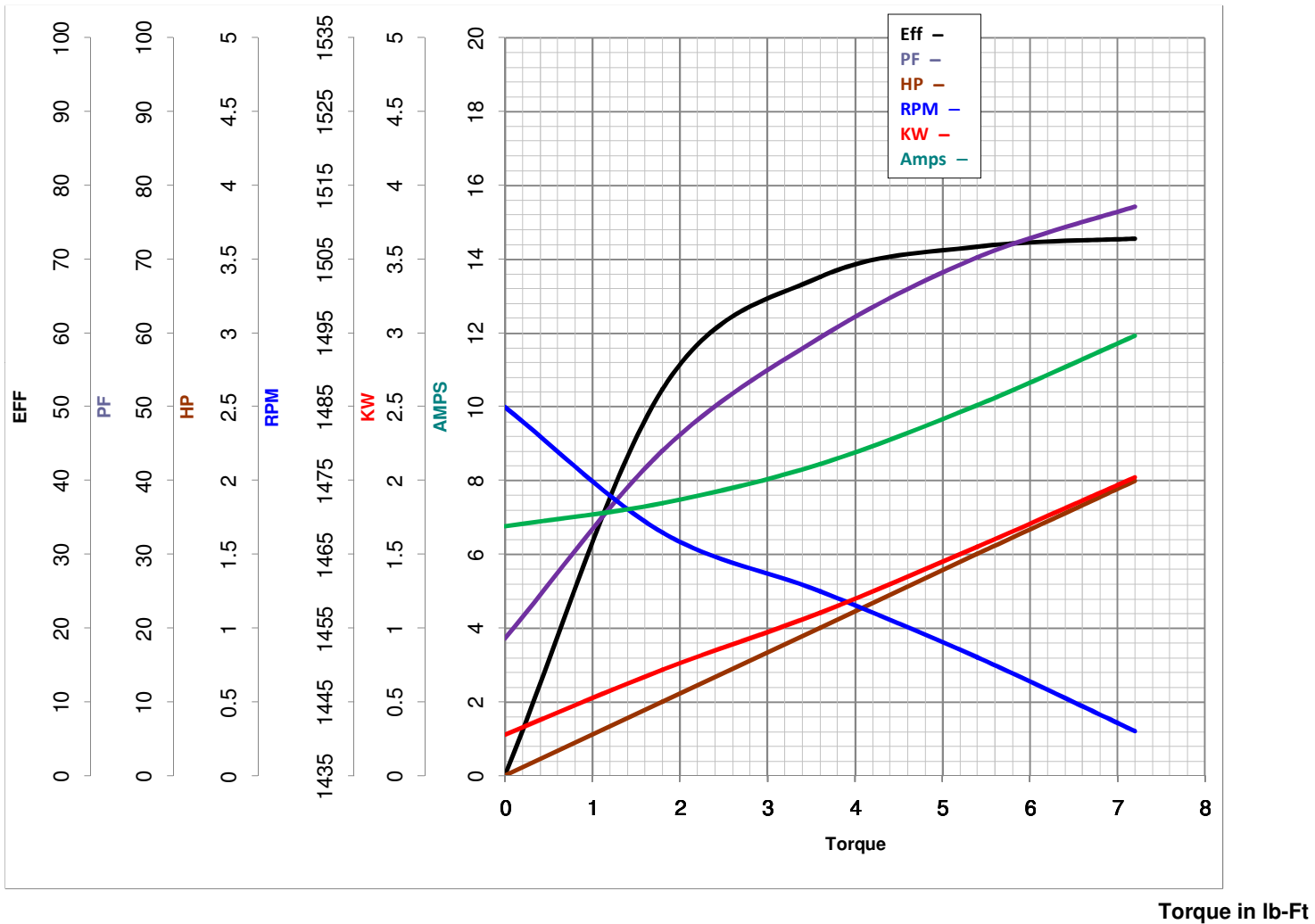
Volts

HP 2.00PHASE 150

HZ

VOLTS 2202

HP

HZ 50RPM 1440

FL TORQUE 7.2 lb-Ft  
 BD TORQUE 16.3 lb-Ft  
 LR TORQUE 21.8 lb-Ft

FL AMPS 11.2  
 PU TORQUE 13.0 lb-Ft  
 LR AMPS 69

WINDING C8412-5

Date 4/9/2018

## EC Declaration of Conformity

The undersigned representing  
the manufacturer:

Regal Beloit America  
100 East Randolph St.  
Wausau, WI 54401

and the authorized representative  
established within the Community:

Marathon Electric UK  
6F Thistleton Road Ind. Estate  
Market Overton  
Oakham, Rutland LE15 7PP UK

are committed to providing customers with products that comply with applicable regulations and international protocols to which they are subject, including the requirements of the European Parliament Directive on the Harmonization of the laws relating to electrical equipment designed for use within certain voltage limits (2014/35/EU).

Regal Beloit America declares that the following product(s), to which this declaration relates, are in conformity with the relevant sections of the EC standards listed below.

This statement supersedes any statements previously issued pertaining to the product(s) listed below and is subject to change without notice.

Model No : 131556.00

(Model No. may contain prefix and/or suffix characters)

Catalog No : 131556.00

Rework No : N/A

Directives :

Low Voltage Directive 2014/35/EU

Harmonized Standards Used :

EN 60034-1: 2010 (IEC 60034-1: 2010)

EN 60034-5: 2001/A1:2007 (IEC 60034-5: 2000/A1:2006)

Authorized Representative:



Michael A. Logsdon  
Vice President, Technology

Authorized Representative in the Community:



Julian Clark  
Marketing Engineer

Created on 09/01/2022

**CE 22**