

PRODUCT INFORMATION PACKET



Model No: 131545.00

Catalog No: 131545.00

General Purpose Motor, 3 HP, 1 Ph, 60 Hz, 115/208-230 V, 1800 RPM, 184TC Frame, TEFC



Regal and Leeson are trademarks of Regal Rexnord Corporation or one of its affiliated companies.

©2022 Regal Rexnord Corporation, All Rights Reserved. MC017097E





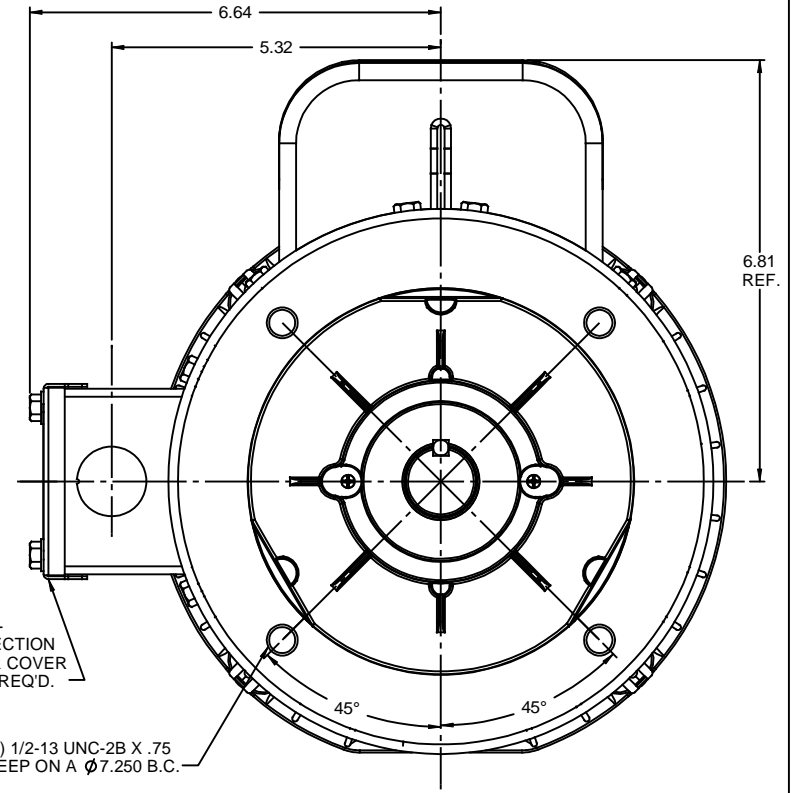
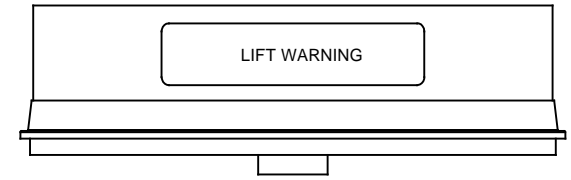
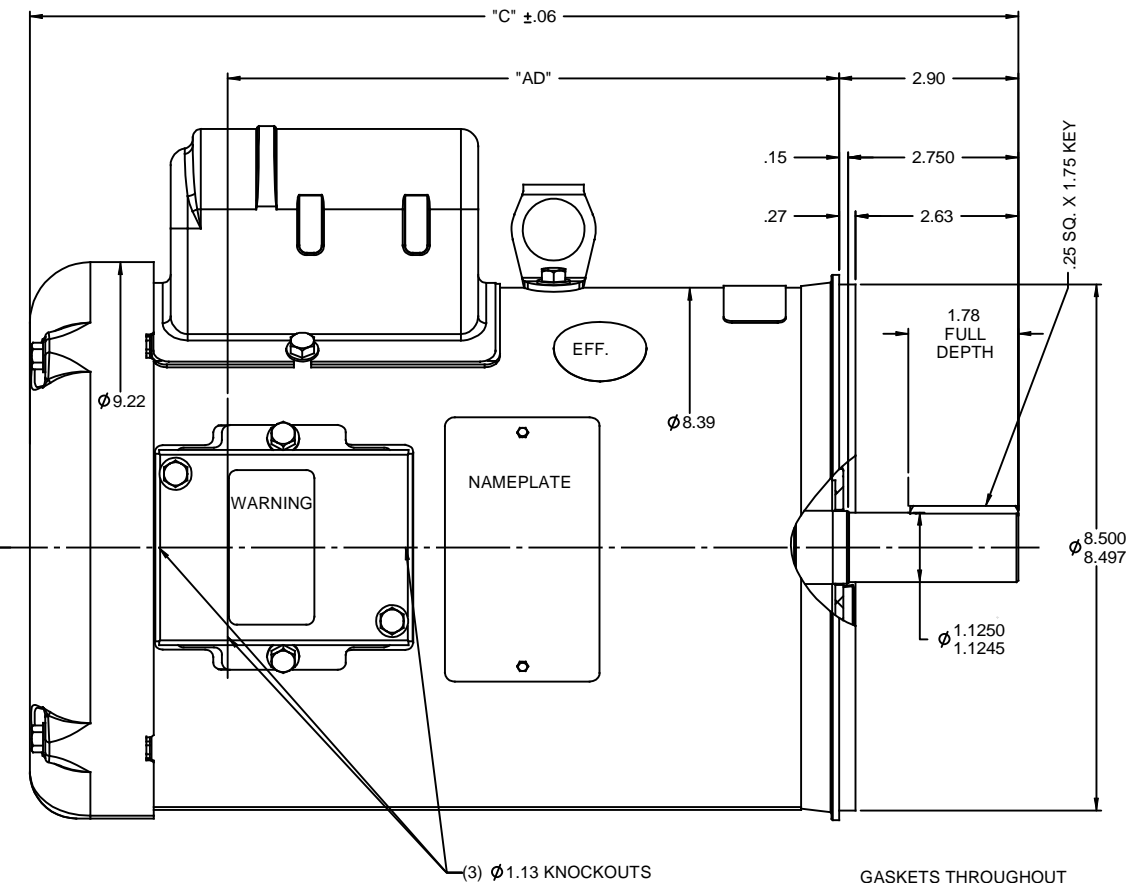
Nameplate Specifications

Output HP	3 Hp	Output KW	2.2 kW
Frequency	60 Hz	Voltage	115/208-230 V
Current	33.6/18.0-16.8 A	Speed	1740 rpm
Service Factor	1	Phase	1
Efficiency	77 %	Power Factor	75
Duty	Continuous	Insulation Class	F
Design Code	L	KVA Code	J
Frame	184TC	Enclosure	Totally Enclosed Fan Cooled
Thermal Protection	No Protection	Ambient Temperature	40 °C
Drive End Bearing Size	6206	Opp Drive End Bearing Size	6205
UL	Recognized	CSA	Y
CE	N	IP Code	43
Number of Speeds	1		

Technical Specifications

Electrical Type	Capacitor Start Induction Run	Starting Method	Across The Line
Poles	4	Rotation	Selective Counterclockwise
Resistance Main	.642 Ohms	Mounting	Round
Motor Orientation	Horizontal	Drive End Bearing	Ball
Opp Drive End Bearing	Ball	Frame Material	Rolled Steel
Shaft Type	T	Overall Length	16.47 in
Frame Length	11.00 in	Shaft Diameter	1.125 in
Shaft Extension	2.75 in	Assembly/Box Mounting	F1 ONLY
Connection Drawing	005062.01	Outline Drawing	035746-1100

RBC PROPRIETARY AND CONFIDENTIAL INFORMATION
 This document is the property of REGAL BELOIT CORPORATION ("RBC") including its subsidiaries and divisions and contains proprietary information of RBC. This document is loaned on the express condition that neither it nor the information contained therein shall be disclosed to others without the express written consent of RBC, and that the information shall be used by the recipient only as approved expressly by RBC. This document shall be returned to RBC upon its request. This document may be subject to certain restrictions under U.S. export control laws and regulations.



GASKETS THROUGHOUT
 MAXIMUM FACE RUNOUT TO BE .004 T.I.R.
 MAXIMUM PILOT ECCENTRICITY TO BE .004 T.I.R.
 PERMISSIBLE SHAFT RUNOUT TO BE .002 T.I.R.

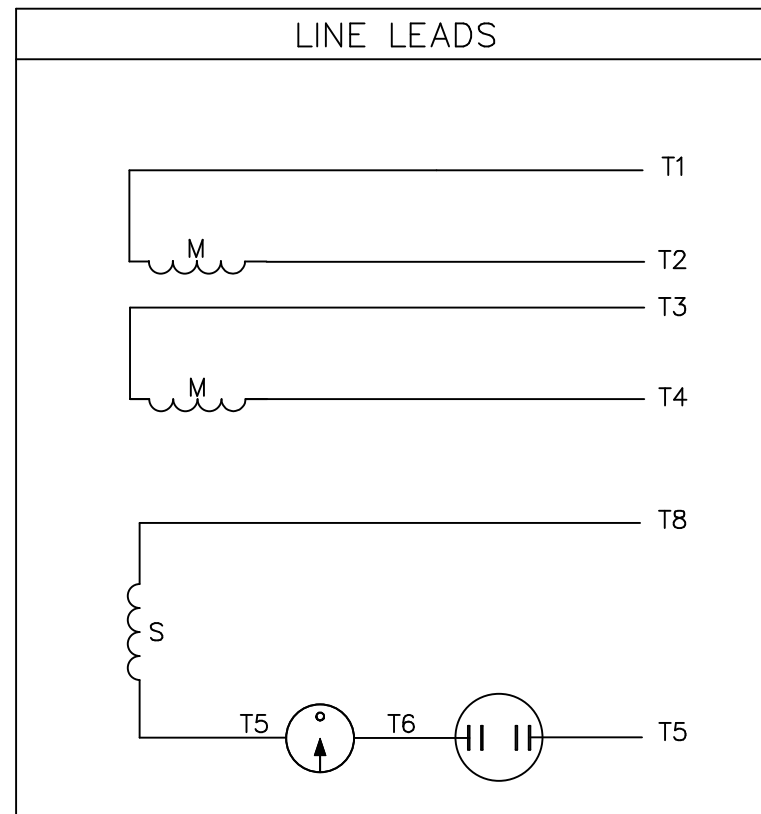
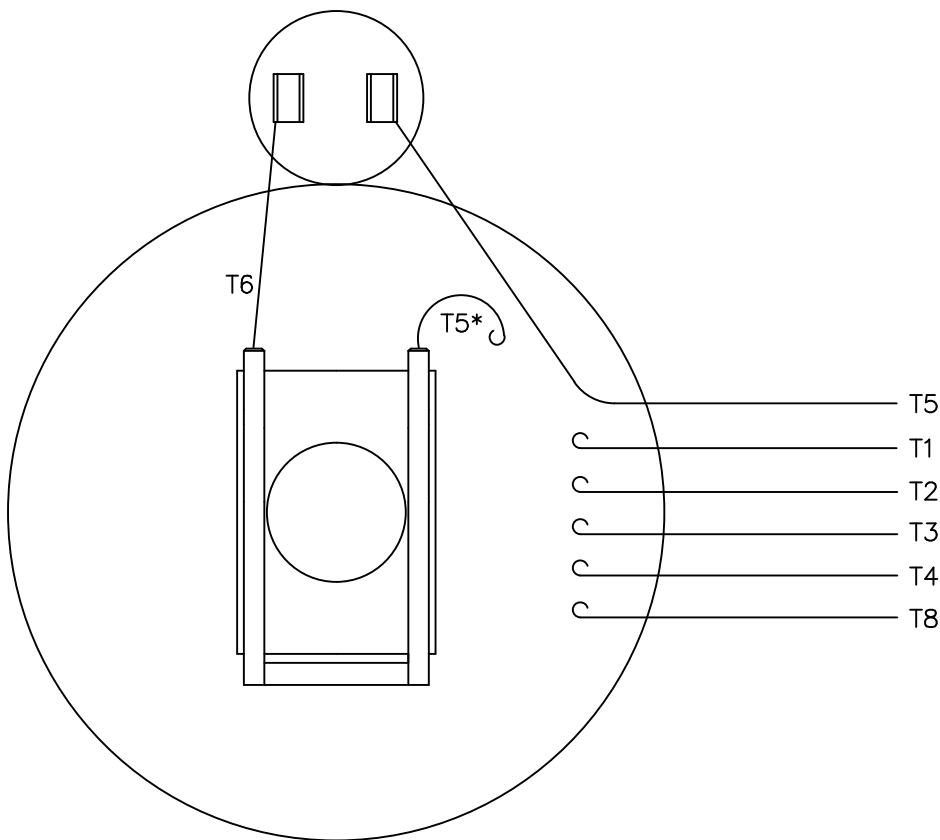
DASH NO.	"C"	"AD"
800	13.47	7.38
850	13.97	7.88
900	14.47	8.38
950	14.97	8.88
1000	15.47	9.38
1050	15.97	9.88
1100	16.47	10.38
1150	16.97	10.88
1200	17.47	11.38

REVISION		BY & DATE	CHK	ANG	FINISH	SIZE	DRAWING NO	REV
THIRD ANGLE PROJECTION			RFP		PREV	B	035746	

TOLERANCES UNLESS SPECIFIED		DRAWN LST 1/9/10	
DEC	INCHES	CHK	
X	±.1	APPR	
.XX	±.03	SCALE	1:2
.XXX	±.005	REF	
.XXX	±.0005	FMF	
NO		PAGE	OF


REGAL BELOIT CORPORATION		TITLE	
REGAL BELOIT CORPORATION		OUTLINE - 184TC FRAME	
		TEFC - "C" FACE	
		MAT'L	
NETWORK FILE NAME			

VIEW FROM OUTSIDE OF MOTOR AT SWITCH END.



	ROTATION FACING LEAD END	L1	L2	JOIN
HIGH VOLT	C.C.W.	T1	T4 T5	T2,T3 T8
	C.W.	T1	T4 T8	T2,T3 T5
LOW VOLT	C.C.W.	T1,T3 T8	T2,T4 T5	---
	C.W.	T1,T3 T5	T2,T4 T8	---

* THIS LEAD MAY BE WHITE

		TOLERANCES UNLESS SPECIFIED		 ELECTRIC MOTORS GEARMOTORS AND DRIVES		DRAWN JRW 12/05/74	
		DEC.	INCHES			CHK	
			.X	±.1		APPD T.E.M.	
12	ALTERNATE T5 LEAD MARKING WAS RED	RLW 8/6/02	.XX	±.01	TITLE	SCALE 1=1	
11	ADDED ALTERNATE T5 LEAD MARKING	RLW 5/31/02	KH .XXX	±.005		EXT. WIRING DIAGRAM TYPE "C" W/O PROTECTOR	
10	UPDATED TO CURRENT STANDARDS	DBT 06/09/97	.XXXX	±.0005	MAT'L.	REF A-005061	
NO.	REVISION	BY & DATE	CHK	ANG ±1/2"		DECAL - 004012	
THIS DRAWING IN DESIGN AND DETAIL IS OUR PROPERTY AND MUST NOT BE USED EXCEPT IN CONNECTION WITH OUR WORK ALL RIGHTS OF DESIGN AND INVENTION ARE RESERVED THIS IS AN ELECTRONICALLY GENERATED DOCUMENT - DO NOT SCALE THIS PRINT		RFP	CAD FILE		00506201	SIZE	DRAWING NO.
		DIST NLV				A	005062-01
							REV. 12



**1051 CHEYENNE AVE.
GRAFTON, WI 53024
PH. 262-377-8810**

CERTIFICATION DATA SHEET

CATALOG #: 131545.00

CONN. DIAGRAM: 005062.01

OUTLINE: 035746-1100

MOUNTING: F1 ONLY

WINDING #: C8427 FR 3 A

TYPICAL MOTOR PERFORMANCE DATA

HP	kW	SYNC. RPM	F.L. RPM	FRAME	ENCLOSURE	KVA CODE	DESIGN
3	2.24	1800	1740	184TC	TEFC	J	L

PH	Hz	VOLTS	AMPS	START TYPE	DUTY	INSL	S.F.	AMB°C
1	60	115/208-230	33.6/18-16.8	ACROSS THE LINE	CONTINUOUS	F4	1.0	40

FULL LOAD EFF:	77	3/4 LOAD EFF:	74.2	1/2 LOAD EFF:	70.9	GTD. EFF	ELEC. TYPE
FULL LOAD PF:	75	3/4 LOAD PF:	72.5	1/2 LOAD PF:	61.7	74	CAP START IND RUN

F.L. TORQUE	LOCKED ROTOR AMPS	L.R. TORQUE	B.D. TORQUE	F.L. RISE°C
9 LB-FT	200 / 100	24 LB-FT 267 %	19.5 LB-FT 217 %	75

SOUND PRESSURE @ 3 FT.	SOUND POWER	ROTOR WK^2	MAX. WK^2	SAFE STALL TIME	STARTS / HOUR	APPROX. MOTOR WGT
0 dBA	10 dBA	0.51 LB-FT^2	0.5 LB-FT^2	0 SEC.	0	85 LBS.

***** SUPPLEMENTAL INFORMATION *****

DE BRACKET TYPE	ODE BRACKET TYPE	MOUNT TYPE	ORIENTATION	SEVERE DUTY	HAZARDOUS LOCATION	DRIP COVER	SCREENS	PAINT
C-FACE	STANDARD	ROUND	HORIZONTAL	FALSE	NONE	FALSE	NONE	BLUE - LEESON (ENAMEL)

BEARINGS		GREASE	SHAFT TYPE	SPECIAL DE	SPECIAL ODE	SHAFT MATERIAL	FRAME MATERIAL
DE	ODE						
BALL	BALL	POLYREX EM	T	NONE	NONE	AISI 1045 (C-240)	ROLLED STEEL
6206	6205						

THERMO-PROTECTORS				THERMISTORS	CONTROL	SPACE HEATERS
THERMOSTATS	PROTECTORS	WDG RTDs	BRG RTDs			
NONE	NOT	NONE	NONE	NONE	FALSE	NONE VOLTS

*
N
O
T
E
S

INVERTER TORQUE: NONE
INV. HP SPEED RANGE: NONE
ENCODER: NONE
NONE NONE
NONE NONE PPR
BRAKE: NONE NONE
NONE P/N NONE
NONE NONE
NONE FT-LB NONE V NONE HZ

