

# PRODUCT INFORMATION PACKET



Model No: 131536.00

Catalog No: 131536.00

Air Compressor Motor, 2 HP, 1 Ph, 60 Hz, 115/208-230 V, 1800 RPM, 182T Frame, DP



Regal and Leeson are trademarks of Regal Rexnord Corporation or one of its affiliated companies.

©2024 Regal Rexnord Corporation, All Rights Reserved. MC017097E





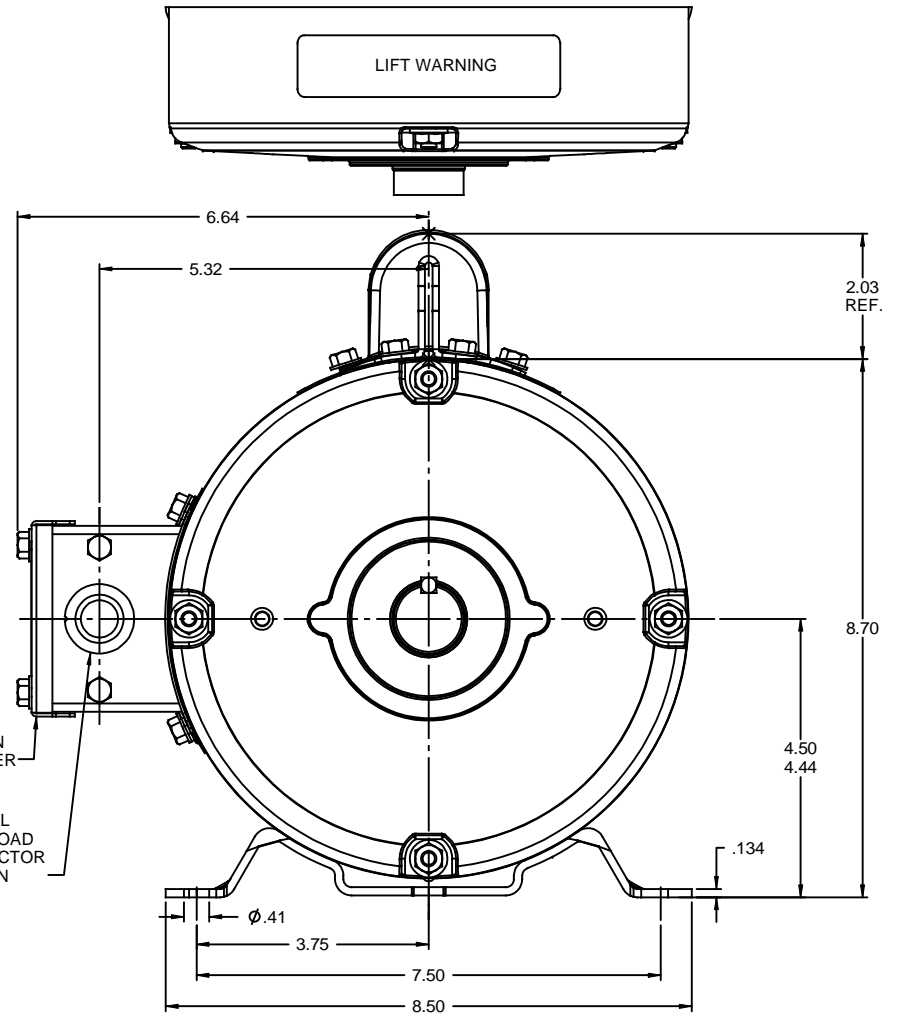
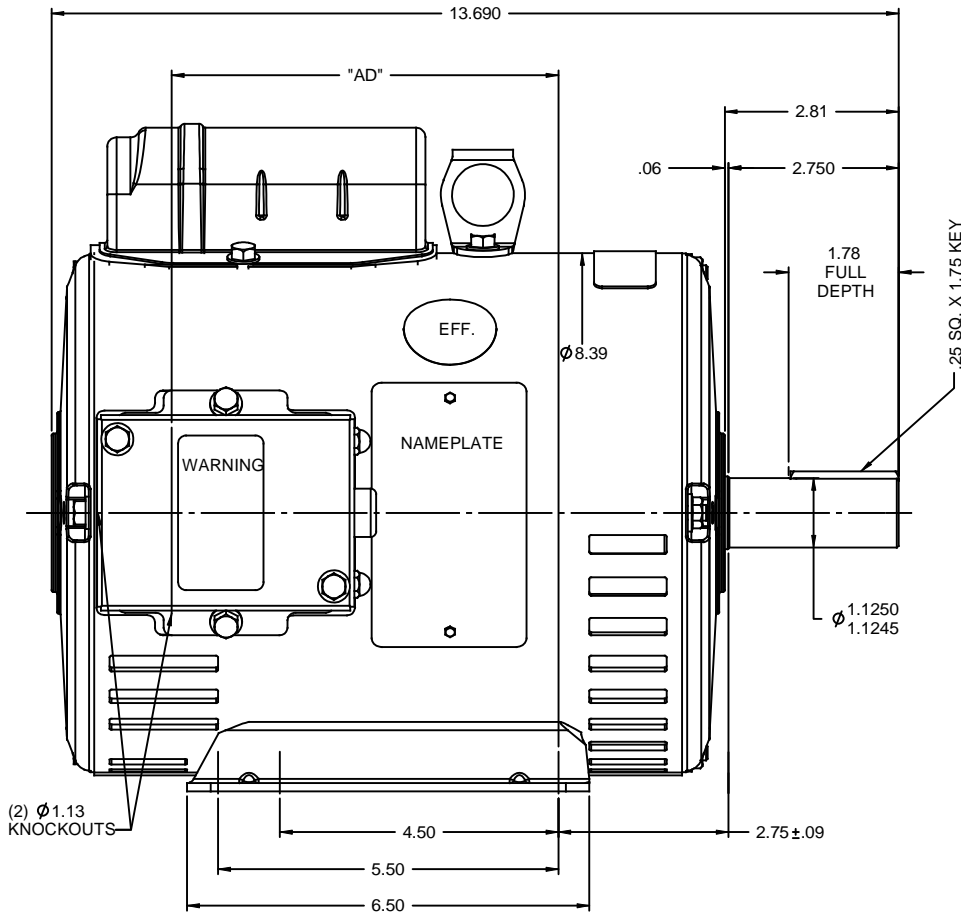
**Nameplate Specifications**

Phase	1	Output HP	2 Hp
Output KW	1.5 kW	Voltage	115/208-230 V
Speed	1740 rpm	Service Factor	1.15
Frame	182T	Enclosure	Drip Proof
Thermal Protection	Manual	Efficiency	72 %
Ambient Temperature	40 °C	Frequency	60 Hz
Current	24.5/13.0-12.4 A	Power Factor	74
Duty	Continuous	Insulation Class	F
Design Code	L	KVA Code	K
Drive End Bearing Size	6206	Opp Drive End Bearing Size	6205
UL	Recognized	CSA	Y
CE	N	IP Code	22
Number of Speeds	1		

**Technical Specifications**

Electrical Type	Capacitor Start Induction Run	Starting Method	Across The Line
Poles	4	Rotation	Selective Counterclockwise
Resistance Main	0 Ohms	Mounting	Rigid Base
Motor Orientation	Horizontal	Drive End Bearing	Ball
Opp Drive End Bearing	Ball	Frame Material	Rolled Steel
Shaft Type	T	Overall Length	13.19 in
Frame Length	9.00 in	Shaft Diameter	1.125 in
Shaft Extension	2.75 in	Assembly/Box Mounting	F1 ONLY
Outline Drawing	035367-900	Connection Drawing	005067.02

RBC PROPRIETARY AND CONFIDENTIAL INFORMATION  
 This document is the property of REGAL BELOIT CORPORATION ("RBC") including its subsidiaries and divisions and contains proprietary information of RBC. This document is loaned on the express condition that neither it nor the information contained therein shall be disclosed to others without the express written consent of RBC, and that the information shall be used by the recipient only as approved expressly by RBC. This document shall be returned to RBC upon its request. This document may be subject to certain restrictions under U.S. export control laws and regulations.

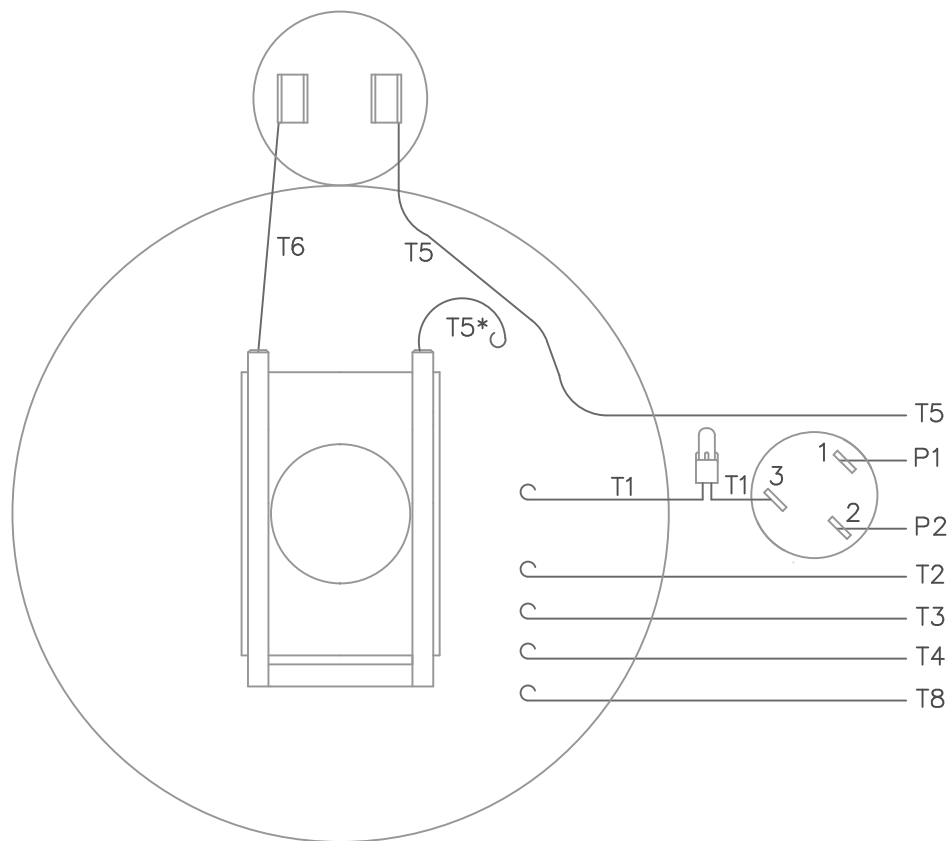


DASH NO.	"C"	"AD"
900	13.19	5.75
950	13.69	6.25
1000	14.19	6.75
1050	14.69	7.25
1100	15.19	7.75
1150	15.69	8.25
1200	16.19	8.75
1250	16.69	9.25

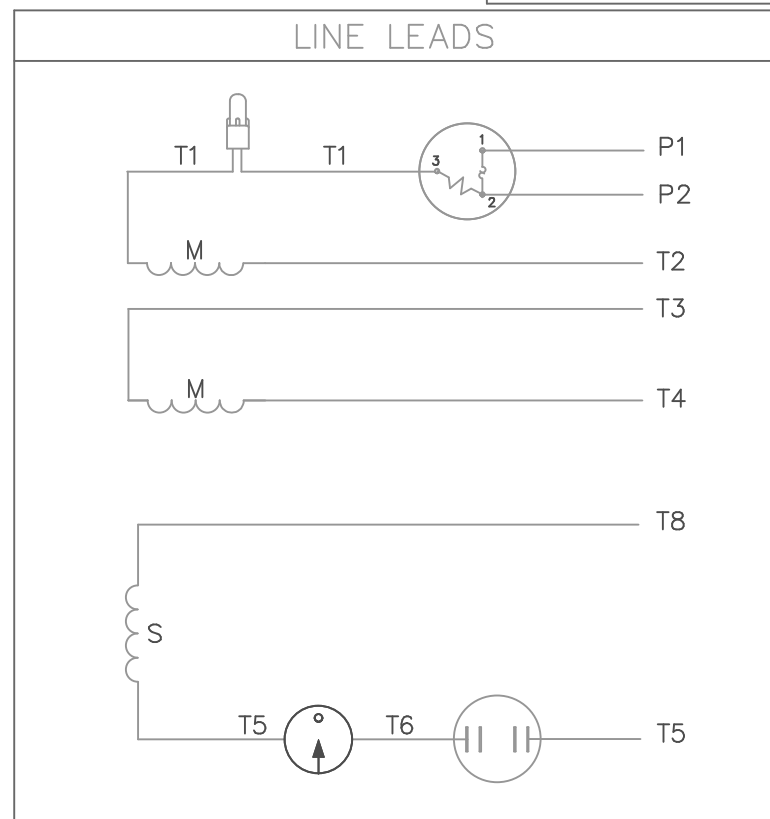
GASKETS THROUGHOUT

		TOLERANCES UNLESS SPECIFIED		DRAWN PG 99/30/97	
		DEC	INCHES	CHK	
		x	±.1	APPR	
		.xx	±.03	SCALE 1:2	
		.xxx	±.005	REF 035000	
- UPDATED & REDRAWN ON SOLIDWORKS		LST 11/16/2009	XX .xxx± ±.005	FMF 131536	
NO REVISION		BY & DATE	CHK ANG ±1/2°	PAGE OF	
THIRD ANGLE PROJECTION		RFP	FINISH	SIZE	DRAWING NO
		PREV		B	035367
		NETWORK FILE NAME			REV -

VIEW FROM OUTSIDE OF MOTOR AT SWITCH END.



\* THIS LEAD MAY BE WHITE



	ROTATION FACING LEAD END	L1	L2	JOIN	INSULATE SEPARATELY
HIGH VOLT	C.C.W.	P1	T4 T5	T2,T3 T8	P2
	C.W.	P1	T4 T8	T2,T3 T5	P2
LOW VOLT	C.C.W.	P1	T2,T4 T5	P2,T3 T8	
	C.W.	P1	T2,T4 T8	P2,T3 T5	

NO.	REVISION	BY & DATE	CHK	TOLERANCES UNLESS SPECIFIED	
				DEC.	INCHES
05	ALTERNATE T5 LEAD MARKING WAS RED	RLW 8/6/02		.X	±.1
04	ADDED ALTERNATE T5 LEAD MARKING	RLW 5/31/02	KH	.XX	±.01
03	DECAL WAS 004015	DBT 12/23/97		.XXX	±.005
02	REDRAWN ON CAD	DBT 05/29/97		.XXXX	±.0005
				ANG	±1/2°



ELECTRIC MOTORS  
GEARMOTORS  
AND DRIVES

DRAWN	WLW 09/01/76
CHK	
APPD	
SCALE	1=1
REF	
FMF	
PREV	

TITLE	EXT. WIRING DIAGRAM TYPE "C" W/ PROTECTOR
MAT'L.	DECAL - 004011
FINISH	

THIS DRAWING IN DESIGN AND DETAIL IS OUR PROPERTY AND MUST NOT BE USED EXCEPT IN CONNECTION WITH OUR WORK ALL RIGHTS OF DESIGN AND INVENTION ARE RESERVED THIS IS AN ELECTRONICALLY GENERATED DOCUMENT - DO NOT SCALE THIS PRINT		RFP	CAD FILE	00506702	SIZE	DRAWING NO.	REV.
		DIST	NLV		A	005067-02	05



**CERTIFICATION DATA SHEET**

**1051 CHEYENNE AVE.  
GRAFTON, WI 53024  
PH. 262-377-8810**

**CONN. DIAGRAM:** 005067.02

**CATALOG #:** 131536.00

**OUTLINE:** 035367-900

**MOUNTING:** F1 ONLY

**WINDING #:** C842 DR 3 D

**TYPICAL MOTOR PERFORMANCE DATA**

HP	kW	SYNC. RPM	F.L. RPM	FRAME	ENCLOSURE	KVA CODE	DESIGN
2	1.49	1800	1740	182T	DP	K	L

PH	Hz	VOLTS	AMPS	START TYPE	DUTY	INSL	S.F.	AMB°C
1	60	115/208-230	24.5/13-12.4	ACROSS THE LINE	CONTINUOUS	F4	1.15	40

FULL LOAD EFF:	72	3/4 LOAD EFF:	68.4	1/2 LOAD EFF:	65	GTD. EFF	ELEC. TYPE
FULL LOAD PF:	74	3/4 LOAD PF:	67.1	1/2 LOAD PF:	55.1	68	CAP START IND RUN

F.L. TORQUE	LOCKED ROTOR AMPS	L.R. TORQUE	B.D. TORQUE	F.L. RISE°C
6 LB-FT	156 / 78	20.6 LB-FT 343 %	16.1 LB-FT 268 %	52

SOUND PRESSURE @ 3 FT.	SOUND POWER	ROTOR WK^2	MAX. WK^2	SAFE STALL TIME	STARTS / HOUR	APPROX. MOTOR WGT
0 dBA	10 dBA	0.306 LB-FT^2	0.3 LB-FT^2	0 SEC.	0	66 LBS.

**\*\*\* SUPPLEMENTAL INFORMATION \*\*\***

DE BRACKET TYPE	ODE BRACKET TYPE	MOUNT TYPE	ORIENTATION	SEVERE DUTY	HAZARDOUS LOCATION	DRIP COVER	SCREENS	PAINT
STANDARD	STANDARD	RIGID	HORIZONTAL	FALSE	NONE	FALSE	NONE	BLUE - LEESON (ENAMEL)

BEARINGS		GREASE	SHAFT TYPE	SPECIAL DE	SPECIAL ODE	SHAFT MATERIAL	FRAME MATERIAL
DE	ODE						
BALL	BALL	POLYREX EM	T	NONE	NONE	AISI 1045 (C-240)	ROLLED STEEL
6206	6205						

THERMO-PROTECTORS				THERMISTORS	CONTROL	SPACE HEATERS
THERMOSTATS	PROTECTORS	WDG RTDs	BRG RTDs			
NONE	MANUAL	NONE	NONE	NONE	FALSE	NONE VOLTS

\*  
N  
O  
T  
E  
S

<b>INVERTER TORQUE:</b> NONE
<b>INV. HP SPEED RANGE:</b> NONE
<b>ENCODER:</b> NONE
NONE NONE
NONE NONE PPR
<b>BRAKE:</b> NONE NONE
NONE P/N NONE
NONE NONE
NONE FT-LB NONE V NONE Hz



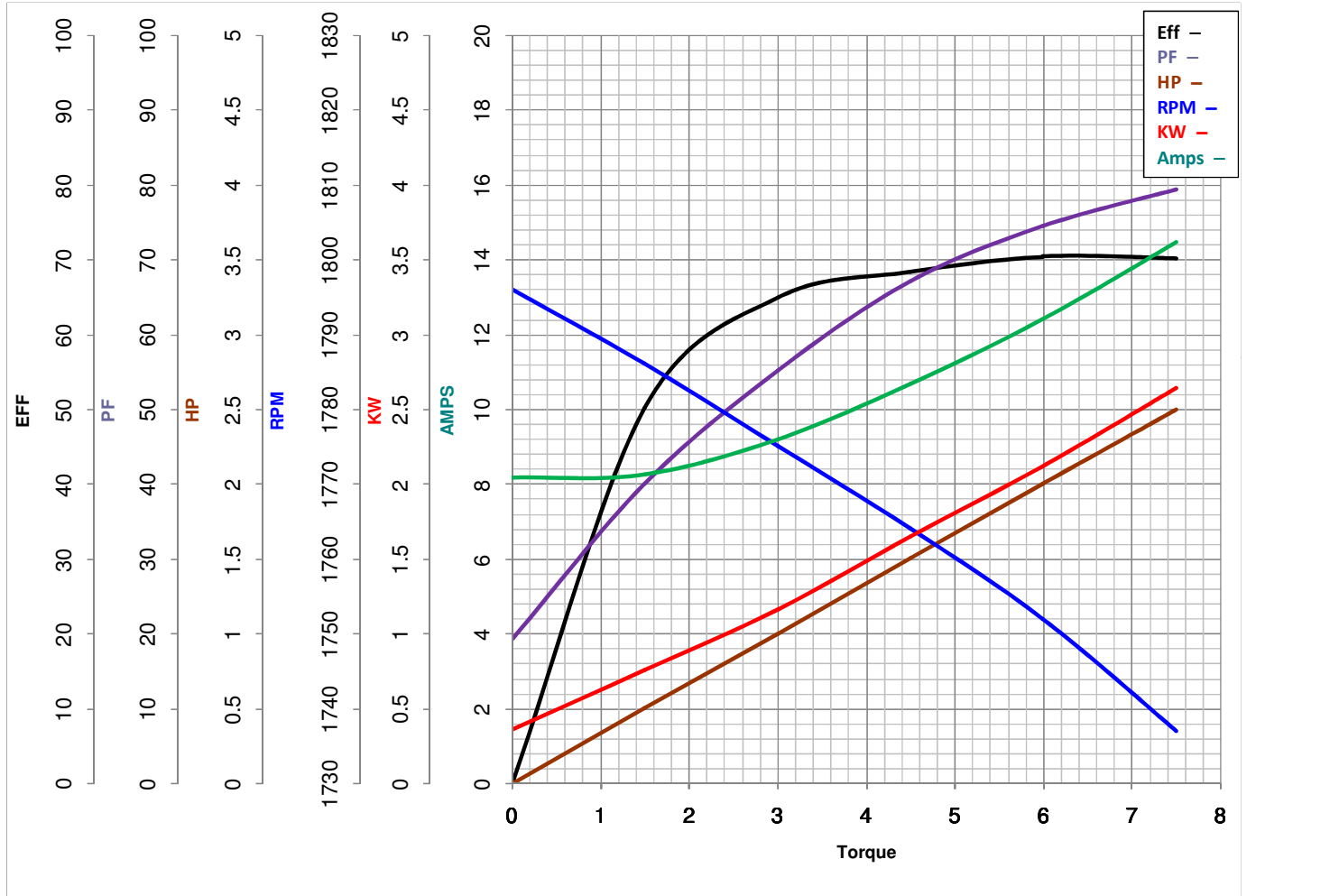
**LEESON ELECTRIC CORPORATION**  
 TYPICAL PERFORMANCE CURVE for AC MOTOR

Model No 131536.00

Catalog No 131536.00

Curve at 230 Volts      HP 2.00      PHASE 1  
60 HZ  
2 HP      VOLTS 115/208-230

HZ 60      RPM 1740



Torque in Lb.Ft

FL TORQUE 6 Lb.Ft  
 BD TORQUE 16.1 Lb.Ft  
 LR TORQUE 20.6 Lb.Ft

FL AMPS 24.5/13-12.4  
 PU TORQUE 15.0 Lb.Ft  
 LR AMPS 78

WINDING C842-3

Date 7/16/2018