

# PRODUCT INFORMATION PACKET

Model No: 131510.00

Catalog No: 131510.00

OBSOLETE - REPLACED BY G131510.00,

P..3480RPM.184.TEFC.208-230/460V.3PH.60HZ.CONT.NOT.40C.1.0SF.C FACE.GENERAL PURPOSE.C184T34FC1

Regal and are trademarks of Regal Rexnord Corporation or one of its affiliated companies.

©2022 Regal Rexnord Corporation, All Rights Reserved. MC017097E



## Nameplate Specifications

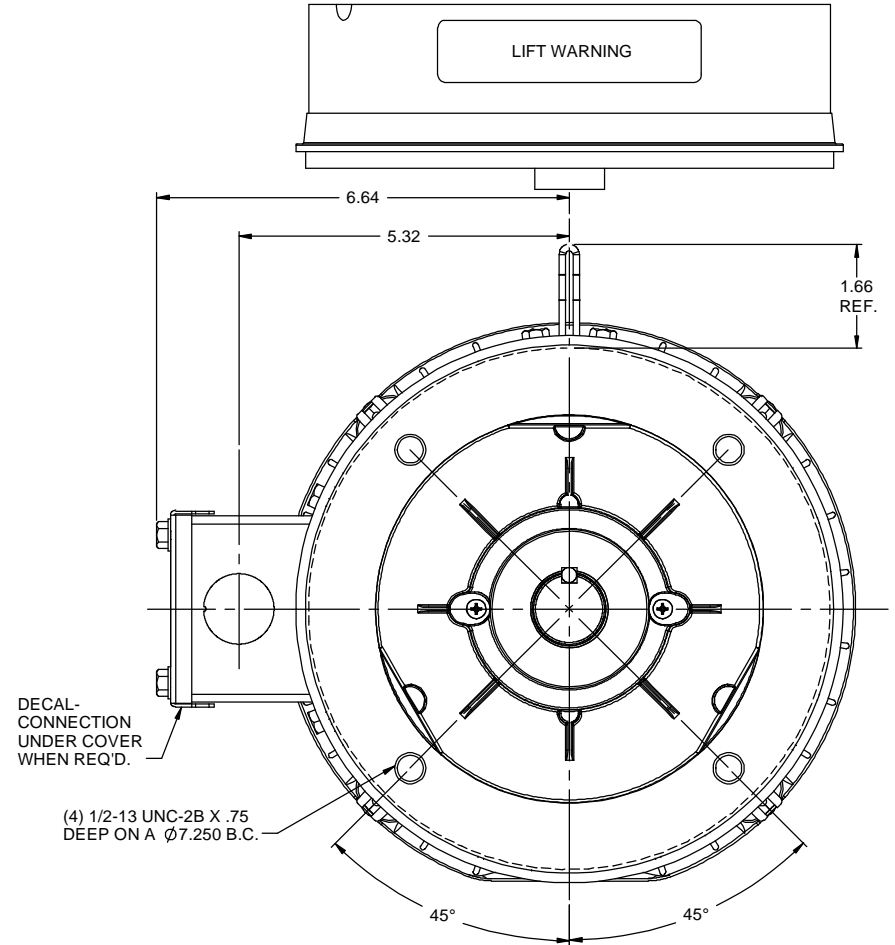
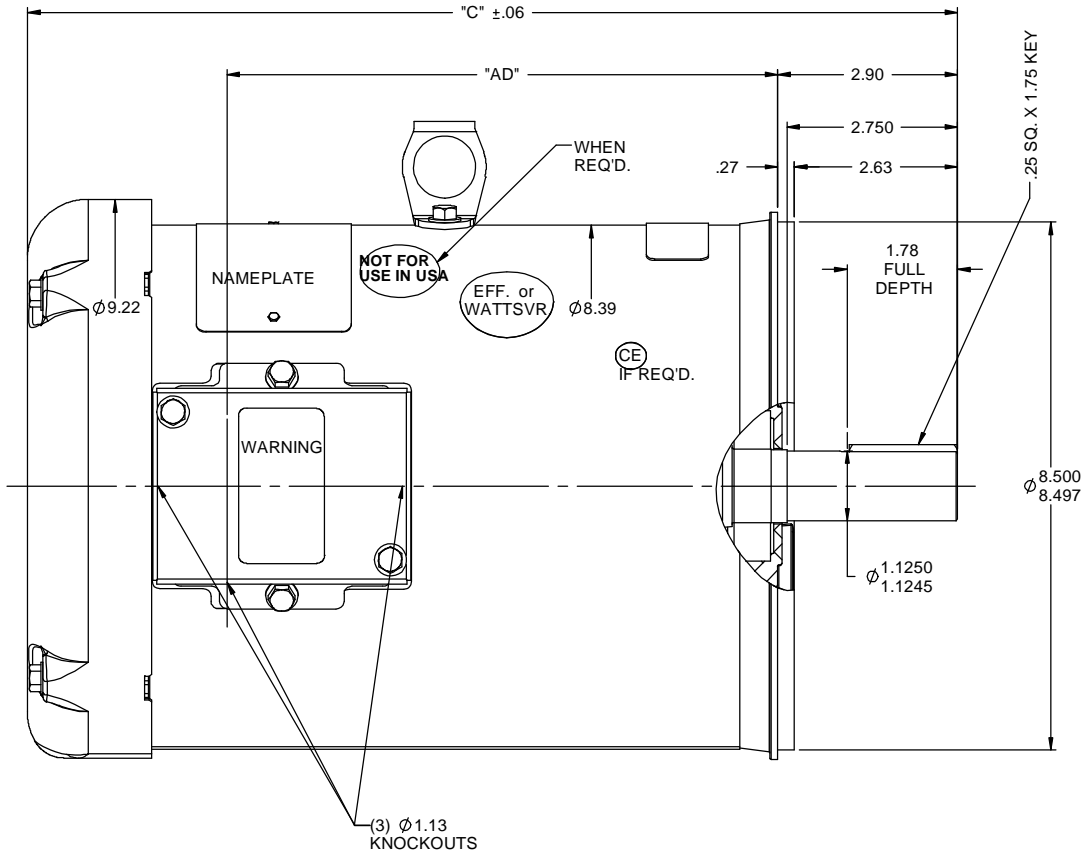
Output HP	7.50 Hp	Output KW	5.6 kW
Frequency	60 Hz	Voltage	208-230/460 V
Current	19.6-18.4/9.2 A	Speed	3480 rpm
Service Factor	1	Phase	3
Efficiency	86.5 %	Power Factor	88.5
Duty	Continuous	Insulation Class	F
Design Code	B	KVA Code	H
Frame	184TC	Enclosure	Totally Enclosed Fan Cooled
Thermal Protection	No Protection	Ambient Temperature	40 °C
Drive End Bearing Size	6206	Opp Drive End Bearing Size	6205
UL	Recognized	CSA	Y
CE	Y	IP Code	43
Number of Speeds	1		

## Technical Specifications

Electrical Type	Squirrel Cage Induction Run	Starting Method	Across The Line
Poles	2	Rotation	Reversible
Resistance Main	1.8 Ohms	Mounting	Round
Motor Orientation	Nan	Drive End Bearing	Ball
Opp Drive End Bearing	Ball	Frame Material	Rolled Steel
Shaft Type	T	Assembly/Box Mounting	NAN
Outline Drawing	035518-950	Connection Drawing	005010.01


This is an uncontrolled document once printed or downloaded and is subject to change without notice. Date Created:07/18/2022

RBC PROPRIETARY AND CONFIDENTIAL INFORMATION  
This document is the property of REGAL BELOIT CORPORATION ("RBC") including its subsidiaries and divisions and contains proprietary information of RBC. This document is loaned on the express condition that neither it nor the information contained therein shall be disclosed to others without the express written consent of RBC, and that the information shall be used by the recipient only as approved expressly by RBC. This document shall be returned to RBC upon its request. This document may be subject to certain restrictions under U.S. export control laws and regulations.



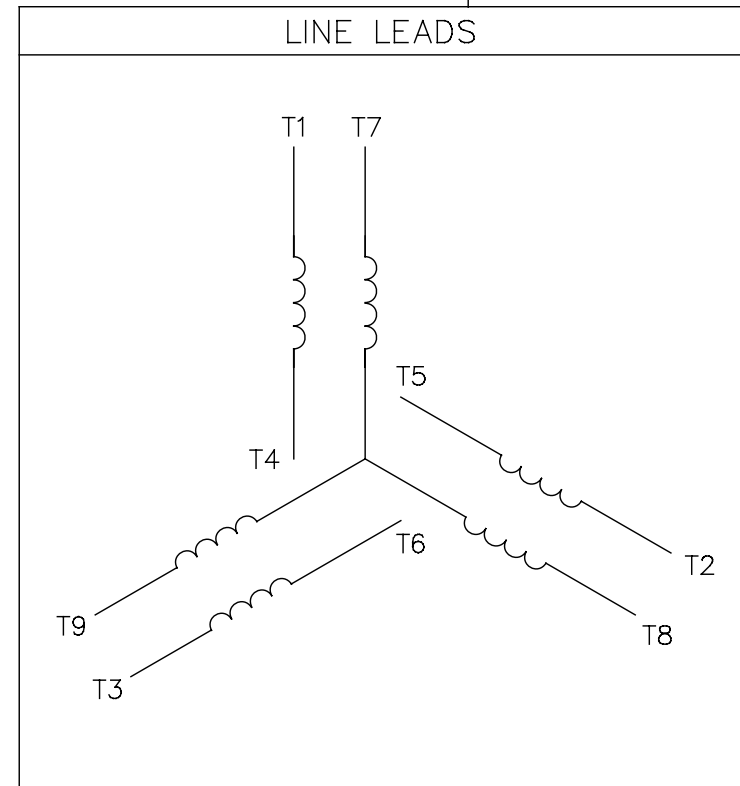
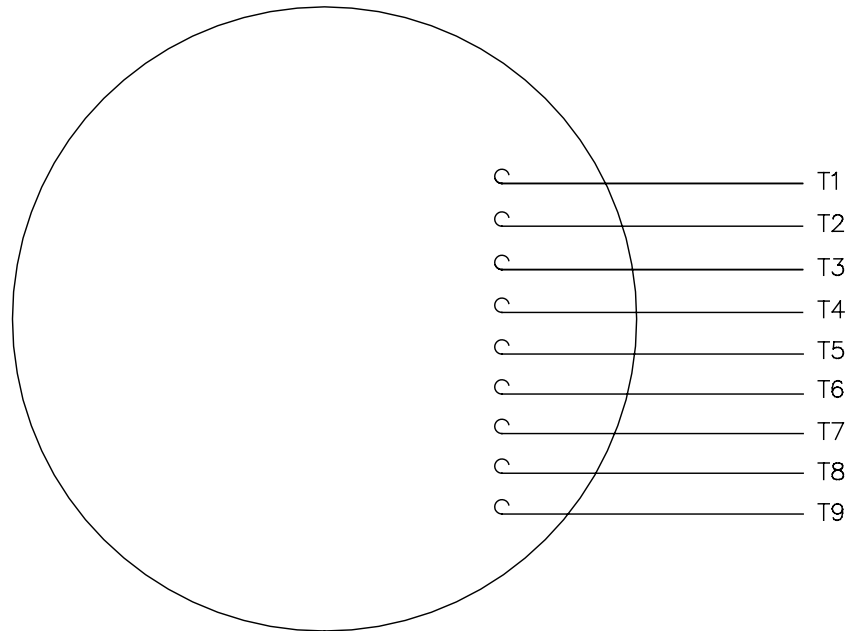
GASKETS THROUGHOUT  
MAXIMUM FACE RUNOUT TO BE .004 T.I.R.  
MAXIMUM PILOT ECCENTRICITY TO BE .004 T.I.R.  
PERMISSIBLE SHAFT RUNOUT TO BE .002 T.I.R.

DASH NO.	"C"	"AD"
750	12.97	6.88
800	13.47	7.38
850	13.97	7.88
900	14.47	8.38
950	14.97	8.88
1000	15.47	9.38
1050	15.97	9.88
1100	16.47	10.38
1150	16.97	10.88


				TOLERANCES UNLESS SPECIFIED	 REGAL-BELOIT CORPORATION	DRAWN RDW 4/18/07
				DEC INCHES		CHK
				X ±.1	TITLE OUTLINE - 180TC FRAME TEFC - "C" FACE MATL GENERAL PURPOSE	APPR SW 4/18/07
				XX ±.03		SCALE 1:2
				XXX ±.005		REF 035452
-	UPDATED & REDRAWN IN SOLIDWORKS	LST 12/17/2009	XX	XXXX ±.0005		FMF
NO	REVISION	BY & DATE	CHK	ANG ±1/2°	FINISH	PAGE OF
			THIRD ANGLE PROJECTION	RFP	PREV	SIZE B
				NETWORK FILE NAME		DRAWING NO 035518
						REV -

005010-01

VIEW FROM OUTSIDE OF MOTOR AT SWITCH END.



VOLTAGE	L1	L2	L3	JOIN & INSULATE
HIGH	T1	T2	T3	(T4,T7) (T5,T8) (T6,T9)
LOW	T1,T7	T2,T8	T3,T9	T4,T5,T6

				TOLERANCES UNLESS SPECIFIED		 <b>Regal Beloit America, Inc.</b>			DRAWN RDW 04/12/02	
				DEC.	INCHES				CHK	
				.X	±.1				APPD	
				.XX	±.01				SCALE 1=1	
				.XXX	±.005	TITLE EXTERNAL WIRING DIAGRAM 3 PHASE W/O PROTECTOR			REF FIG.2-51	
A	UPDATED TO REGAL LOGO	SAJ 06/26/15	AJY	.XXXX	±.0005				MAT'L.	DECAL - 004014
NO.	REVISION	BY & DATE	CHK	ANG	±1/2"	FINISH			PREV	
THIS DRAWING IN DESIGN AND DETAIL IS OUR PROPERTY AND MUST NOT BE USED EXCEPT IN CONNECTION WITH OUR WORK ALL RIGHTS OF DESIGN AND INVENTION ARE RESERVED THIS IS AN ELECTRONICALLY GENERATED DOCUMENT - DO NOT SCALE THIS PRINT				RFP 04/12/02		CAD FILE 00501001		SIZE	DRAWING NO.	REV.
				DIST BRF-NLV				A	005010-01	A