

PRODUCT INFORMATION PACKET



Model No: 131508.00

Catalog No: 131508.00

Special Voltage Motor, 5 HP, 3 Ph, 50 Hz, 220/380/440 V, 1500 & 1500 RPM, 184TC Frame, TEFC



Regal and Leeson are trademarks of Regal Rexnord Corporation or one of its affiliated companies.

©2025 Regal Rexnord Corporation, All Rights Reserved. MC017097E





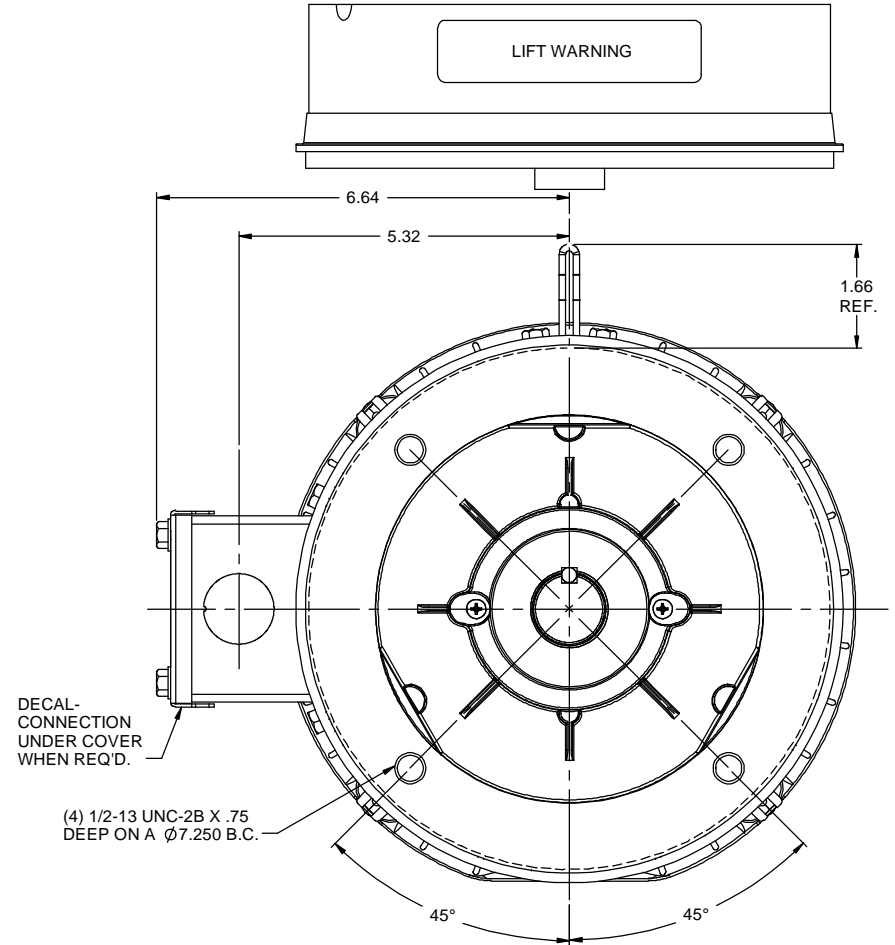
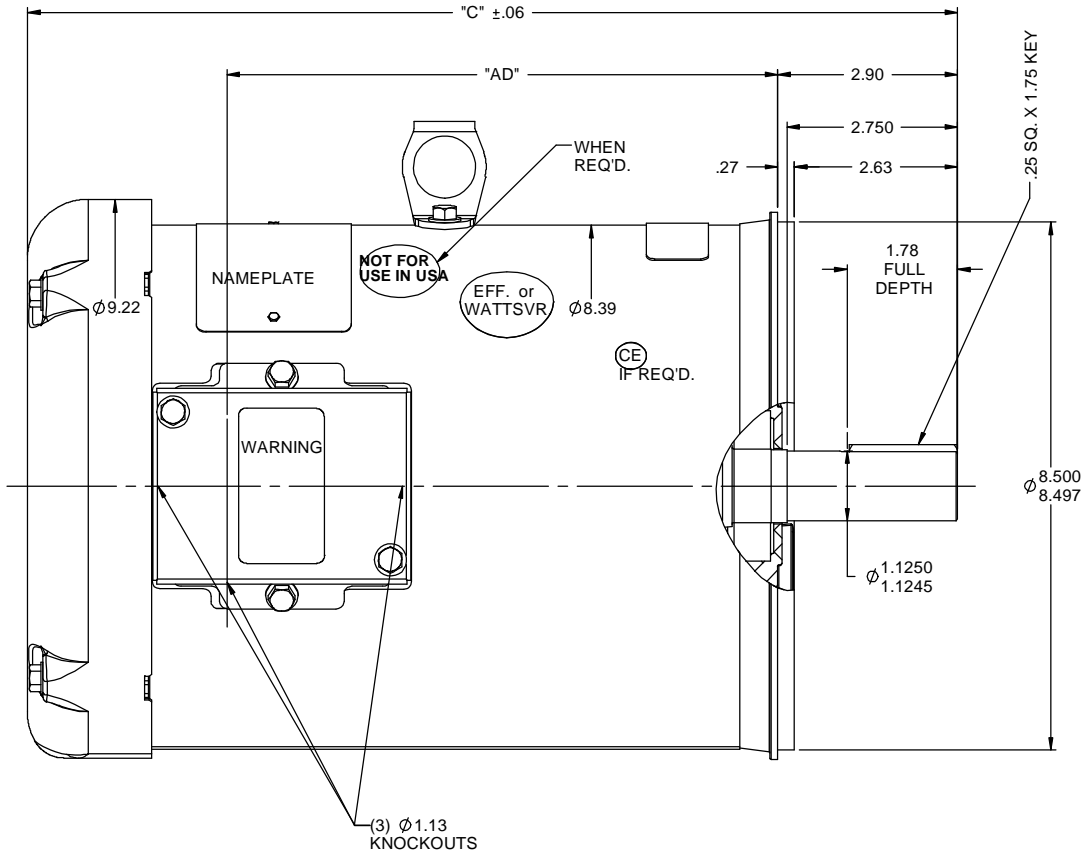
Nameplate Specifications

Phase	3	Output HP	5 Hp
Output KW	3.7 kW	Voltage	220/380/440 V
Speed	1425 r/min	Service Factor	1.0
Frame	184TC	Enclosure	Totally Enclosed Fan Cooled
Thermal Protection	No Protection	Efficiency	87.5 %
Ambient Temperature	40 °C	Frequency	50 Hz
Current	14.0/8.1/7.0 A	Power Factor	78
Duty	Continuous	Insulation Class	F
Design Code	B	KVA Code	L
Drive End Bearing Size	6206	Opp Drive End Bearing Size	6205
UL	Recognized	CSA	Y
CE	Y	IP Code	54
Number of Speeds	1		

Technical Specifications


Electrical Type	Squirrel Cage Induction Run	Starting Method	Across The Line
Poles	4	Rotation	Reversible
Resistance Main	.6243 O	Mounting	Round
Motor Orientation	Horizontal	Drive End Bearing	Ball
Opp Drive End Bearing	Ball	Frame Material	Rolled Steel
Shaft Type	T	Overall Length	15.47 in
Frame Length	10.00 in	Shaft Diameter	1.125 in
Shaft Extension	2.75 in	Assembly/Box Mounting	F1 ONLY
Outline Drawing	035518-1000	Connection Drawing	005381.01

RBC PROPRIETARY AND CONFIDENTIAL INFORMATION
This document is the property of REGAL BELOIT CORPORATION ("RBC") including its subsidiaries and divisions and contains proprietary information of RBC. This document is loaned on the express condition that neither it nor the information contained therein shall be disclosed to others without the express written consent of RBC, and that the information shall be used by the recipient only as approved expressly by RBC. This document shall be returned to RBC upon its request. This document may be subject to certain restrictions under U.S. export control laws and regulations.

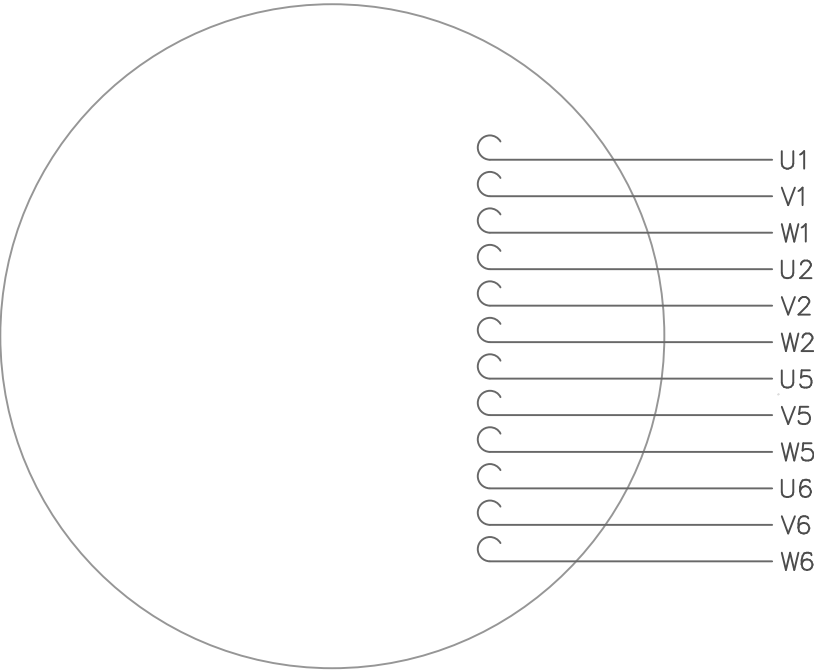


GASKETS THROUGHOUT
MAXIMUM FACE RUNOUT TO BE .004 T.I.R.
MAXIMUM PILOT ECCENTRICITY TO BE .004 T.I.R.
PERMISSIBLE SHAFT RUNOUT TO BE .002 T.I.R.

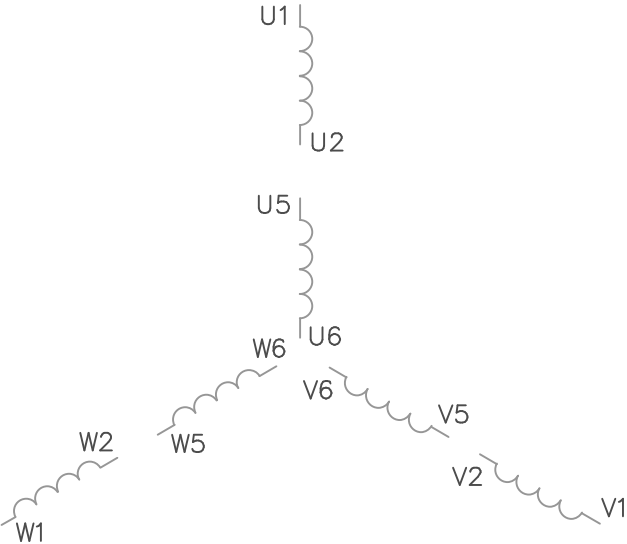
DASH NO.	"C"	"AD"
750	12.97	6.88
800	13.47	7.38
850	13.97	7.88
900	14.47	8.38
950	14.97	8.88
1000	15.47	9.38
1050	15.97	9.88
1100	16.47	10.38
1150	16.97	10.88

				TOLERANCES UNLESS SPECIFIED			DRAWN RDW 4/18/07	
				DEC	INCHES		CHK	
				X	±.1	REGAL BELOIT CORPORATION TITLE OUTLINE - 180TC FRAME TEFC - "C" FACE MATL GENERAL PURPOSE	APPR SW 4/18/07	
				XX	±.03		SCALE 1:2	
				XXX	±.005		REF 035452	
				XXXX	±.0005		FMF	
- UPDATED & REDRAWN IN SOLIDWORKS		LST 12/17/2009	CHK	ANG	±1/2°	FINISH	PAGE	OF
NO	REVISION	BY & DATE	CHK	ANG	±1/2°	FINISH	PREV	
THIRD ANGLE PROJECTION				RFP		SIZE B		DRAWING NO 035518
				NETWORK FILE NAME				REV -

VIEW FROM OUTSIDE OF MOTOR AT SWITCH END.



LINE LEADS



VOLTAGE	L1	L2	L3	JOIN
(2Δ) LOW	U1,W2 U5,W6	V1,U2 V5,U6	W1,V2 W5,V6	-----
(2Y) MEDIUM	U1,U5	V1,V5	W1,W5	(U2,V2,W2) (U6,V6,W6)
(1Δ) HIGH	U1,W6	V1,U6	W1,V6	(U2,U5) (V2,V5) (W2,W5)

				TOLERANCES UNLESS OTHERWISE SPECIFIED		LEESON ELECTRIC CORPORATION				
				DECIMALS						
				.00	± .01	DRAWN GWS 2/23/96	EXT.WIRING DIAGRAM TYPE "T" W/O PROTECTOR			
				.000	± .005	CH'K'D.				
1	REDRAWN TO CURRENT STANDARDS	DBT	05/30/97	.0000	± .0005	APPR.	MAT'L. DECAL — 080590			
NO.	REVISION	BY	DATE	FRACTIONS	± 1/64	SCALE 1=1				
THIS DRAWING IN DESIGN AND DETAIL IS OUR PROPERTY AND MUST NOT BE USED EXCEPT IN CONNECTION WITH OUR WORK ALL RIGHTS OF DESIGN AND INVENTION ARE RESERVED				ANGLES	± 1/2°	REF. 005352 PG 3	FINISH		SIZE A	DRAWING NO. 005381—01
				INCH/MM		FMF	STOCK			



CERTIFICATION DATA SHEET

**1051 CHEYENNE AVE.
GRAFTON, WI 53024
PH. 262-377-8810**

CATALOG #: 131508.00

CONN. DIAGRAM: 005381.01

OUTLINE: 035518-1000

MOUNTING: F1 ONLY

WINDING #: T8436 FR 8 A

TYPICAL MOTOR PERFORMANCE DATA

HP	kW	SYNC. RPM	F.L. RPM	FRAME	ENCLOSURE	KVA CODE	DESIGN
5	3.70	1500	1425	184TC	TEFC	L	B

PH	Hz	VOLTS	AMPS	START TYPE	DUTY	INSL	S.F.	AMB°C
3	50	220/380/440	14/8.1/7	ACROSS THE LINE	CONTINUOUS	F4	1.0	40

FULL LOAD EFF:	87.5	3/4 LOAD EFF:	87.5	1/2 LOAD EFF:	85.1	GTD. EFF	ELEC. TYPE
FULL LOAD PF:	78	3/4 LOAD PF:	71	1/2 LOAD PF:	59.7	0	SQ CAGE IND RUN

F.L. TORQUE	LOCKED ROTOR AMPS	L.R. TORQUE	B.D. TORQUE	F.L. RISE°C
18.4 LB-FT	124 / 71.8 / 62	74.2 LB-FT 412 %	78 LB-FT 433 %	0

SOUND PRESSURE @ 3 FT.	SOUND POWER	ROTOR WK^2	MAX. WK^2	SAFE STALL TIME	STARTS / HOUR	APPROX. MOTOR WGT
0 dBA	10 dBA	0.51 LB-FT^2	0.5 LB-FT^2	0 SEC.	0	- LBS.

*** SUPPLEMENTAL INFORMATION ***

DE BRACKET TYPE	ODE BRACKET TYPE	MOUNT TYPE	ORIENTATION	SEVERE DUTY	HAZARDOUS LOCATION	DRIP COVER	SCREENS	PAINT
C-FACE	STANDARD	ROUND	HORIZONTAL	FALSE	NONE	FALSE	NONE	BLUE - LEESON (ENAMEL)

BEARINGS		GREASE	SHAFT TYPE	SPECIAL DE	SPECIAL ODE	SHAFT MATERIAL	FRAME MATERIAL
DE	ODE						
BALL	BALL	POLYREX EM	T	NONE	NONE	AISI 1045 (C-240)	ROLLED STEEL
6206	6205						

THERMO-PROTECTORS				THERMISTORS	CONTROL	SPACE HEATERS
THERMOSTATS	PROTECTORS	WDG RTDs	BRG RTDs			
NONE	NOT	NONE	NONE	NONE	FALSE	NONE VOLTS

*

N

O

T

E

S

INVERTER TORQUE: NONE
INV. HP SPEED RANGE: NONE

ENCODER: NONE
NONE NONE
NONE NONE PPR

BRAKE: NONE NONE
NONE P/N NONE
NONE NONE
NONE FT-LB NONE V NONE Hz

Data Sheet

Date: 1/19/2018

131508.00



Data @ 440 V

Motor Load Data

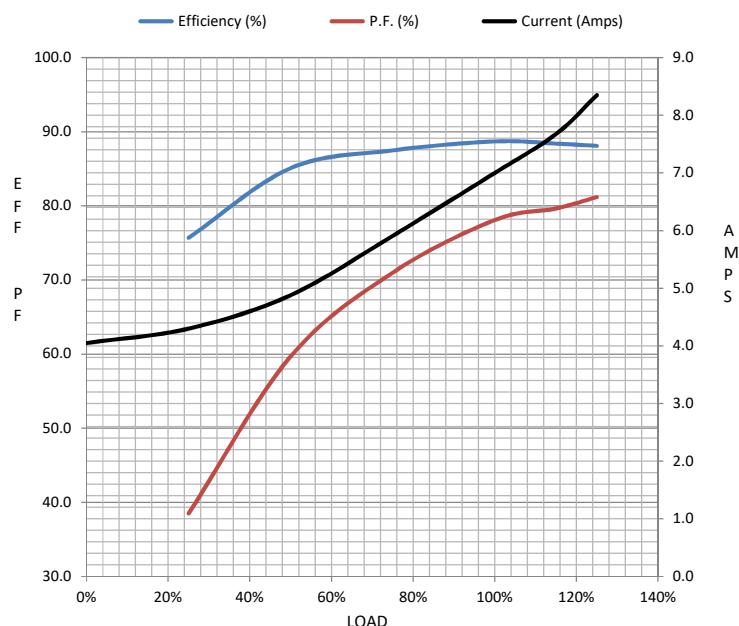
Load	0%	25%	50%	75%	100%	115%	125%	LR	
Current (Amps)	4.1	4.3	4.9	5.9	7.0	7.7	8.4	62.0	
Torque (ft-lb)	0.00	4.6	9.2	13.8	18.4	20.7	23.0	74.2	
RPM	1500	1489	1474	1457	1441	1,433	1420	0	
Efficiency (%)		75.7	85.1	87.5	88.7	88.4	88.1		
P.F. (%)	10.6	38.5	59.7	71.0	78.1	79.7	81.2	0.0	

Motor Speed Data

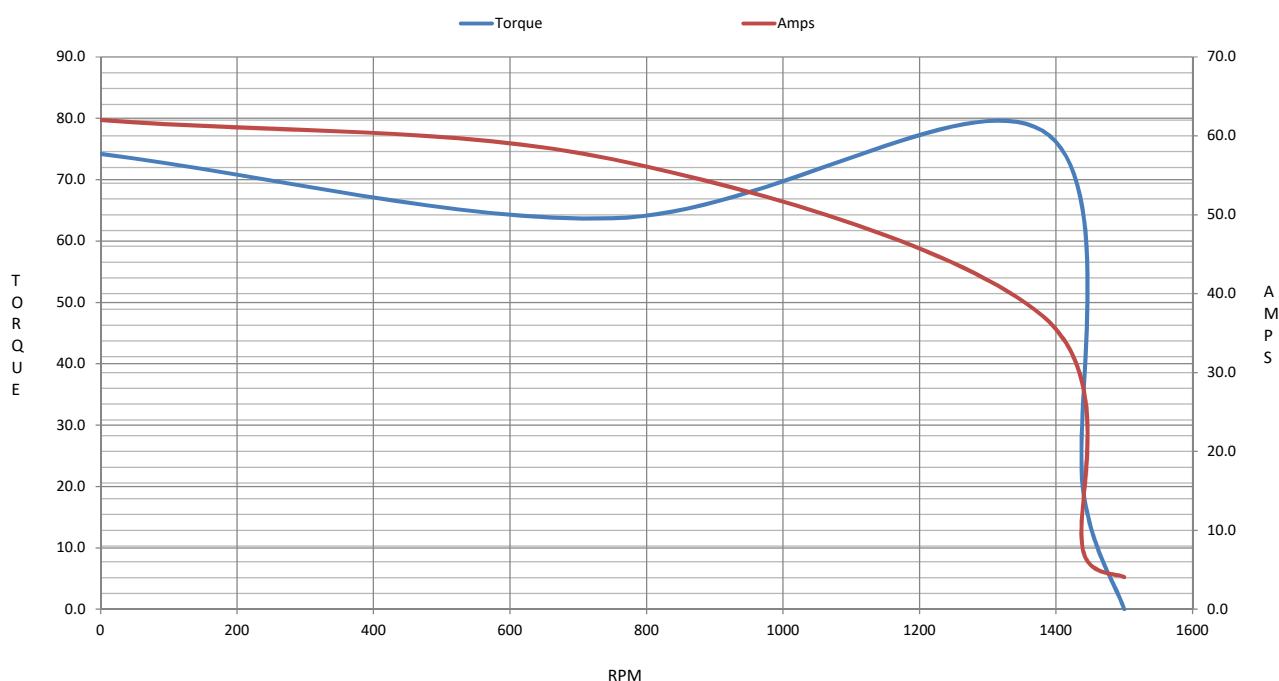
	LR	Pull-Up	BD	Rated	Idle
Speed (RPM)	0	750	1380	1441	1500
Current (Amps)	62.0	57.0	37.2	7.0	4.1
Torque (ft-lb)	74.2	63.7	78.0	18.4	0.00

Information Block

HP	5.0			
Sync. RPM	1500			
Frame	184			
Enclosure	IP54			
Construction	TFW			
Voltage	220/380/440	V		
Frequency	50	Hz		
Design	B			
LR Code letter	L			
Service Factor	1.0			
Temp Rise @ FL	102	° C		
Duty	CONT			
Ambient	40	° C		
Elevation	1,000	feet		
Rotor/Shaft wk²	0.51	Lb-Ft²		
Ref Wdg	T8436 FR			
Sound Pressure @ 1M	0	dBA		
VFD Rating	NONE			
Outline Dwg	035518-1000			
Conn. Diag	005381.01			
Additional Specifications:				
0				
0				
EQUIV CKT (OHMS / PHASE)				
R1	R2	X1	X2	Xm
0.0000	0.0000	0.0000	0.0000	0.0000



Speed - Torque Curve



EC Declaration of Conformity

The undersigned representing
the manufacturer:

Regal Beloit America
100 East Randolph St.
Wausau, WI 54401

and the authorized representative
established within the Community:

Marathon Electric UK
6F Thistleton Road Ind. Estate
Market Overton
Oakham, Rutland LE15 7PP UK

are committed to providing customers with products that comply with applicable regulations and international protocols to which they are subject, including the requirements of the European Parliament Directive on the Harmonization of the laws relating to electrical equipment designed for use within certain voltage limits (2014/35/EU).

Regal Beloit America declares that the following product(s), to which this declaration relates, are in conformity with the relevant sections of the EC standards listed below.

This statement supersedes any statements previously issued pertaining to the product(s) listed below and is subject to change without notice.

Model No : 131508.00

(Model No. may contain prefix and/or suffix characters)

Catalog No : 131508.00

Rework No : N/A

Directives :

Low Voltage Directive 2014/35/EU

Harmonized Standards Used :

EN 60034-1: 2010 (IEC 60034-1: 2010)

EN 60034-5: 2001/A1:2007 (IEC 60034-5: 2000/A1:2006)

Authorized Representative:



Michael A. Logsdon
Vice President, Technology

Authorized Representative in the Community:



Julian Clark
Marketing Engineer

Created on 09/01/2022

CE 22