

PRODUCT INFORMATION PACKET

Model No: 131450.00

Catalog No: 131450.00

2HP..1140RPM.184.TENV.230/460V.3PH.60HZ.AIROVER.AUTOMATIC.40C.1.15SF.RIGID..A184T11NB2B

Regal and are trademarks of Regal Rexnord Corporation or one of its affiliated companies.
©2022 Regal Rexnord Corporation, All Rights Reserved. MC017097E



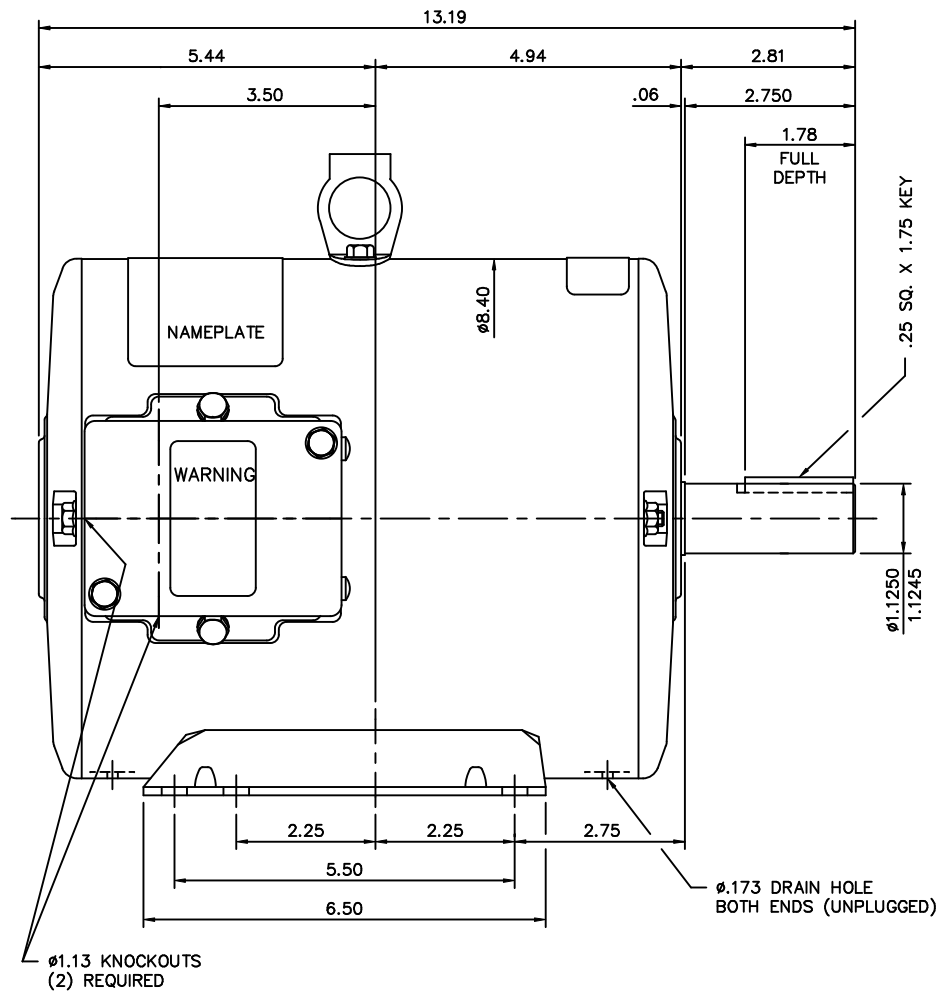
Nameplate Specifications

Output HP	2 Hp	Output KW	1.5 kW
Frequency	60 Hz	Voltage	230/460 V
Current	6.4/3.2 A	Speed	1140 rpm
Service Factor	1.15	Phase	3
Efficiency	81 %	Power Factor	72
Duty	Continuous	Insulation Class	F
Design Code	NO DESIGN CODE	KVA Code	K
Frame	184T	Enclosure	Totally Enclosed Air Over
Thermal Protection	Automatic	Ambient Temperature	40 °C
Drive End Bearing Size	6206	Opp Drive End Bearing Size	6205
UL	Recognized	CSA	Y
CE	N	IP Code	43
Number of Speeds	1		

Technical Specifications

Electrical Type	Squirrel Cage Induction Run	Starting Method	Across The Line
Poles	6	Rotation	Reversible
Resistance Main	0 Ohms	Mounting	Rigid Base
Motor Orientation	Horizontal	Drive End Bearing	Ball
Opp Drive End Bearing	Ball	Frame Material	Rolled Steel
Shaft Type	T	Shaft Diameter	1.125 in
Assembly/Box Mounting	F1 ONLY		
Connection Drawing	005020.02	Outline Drawing	OL131450

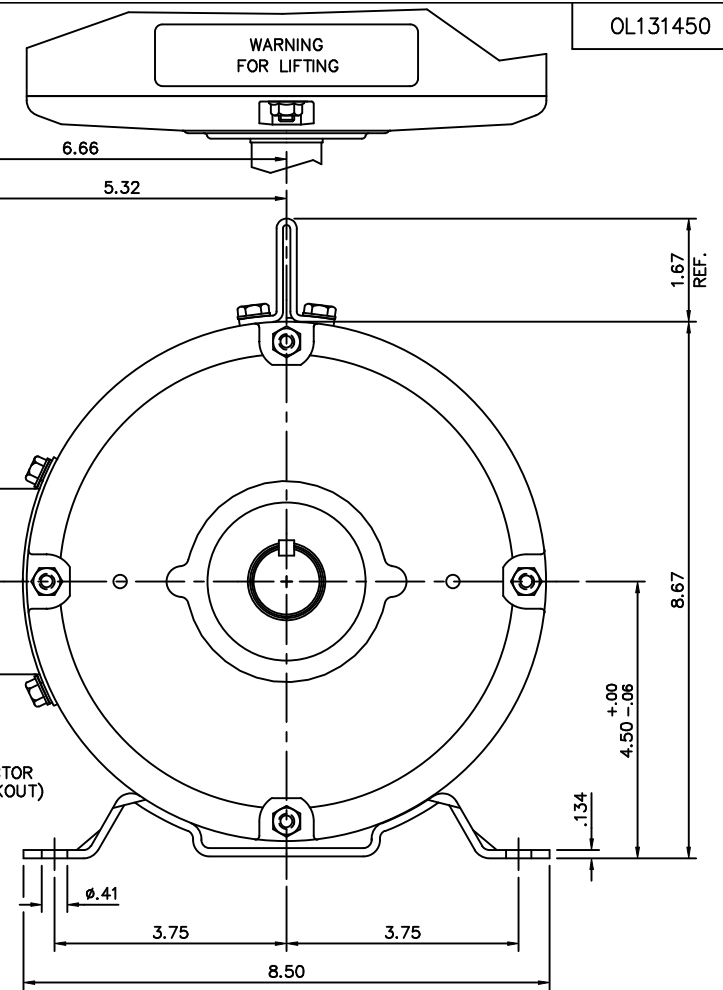
This is an uncontrolled document once printed or downloaded and is subject to change without notice. Date Created:11/01/2022



DECAL-
CONNECTION
UNDER
COVER

AUTOMATIC PROTECTOR
(DO NOT USE KNOCKOUT)

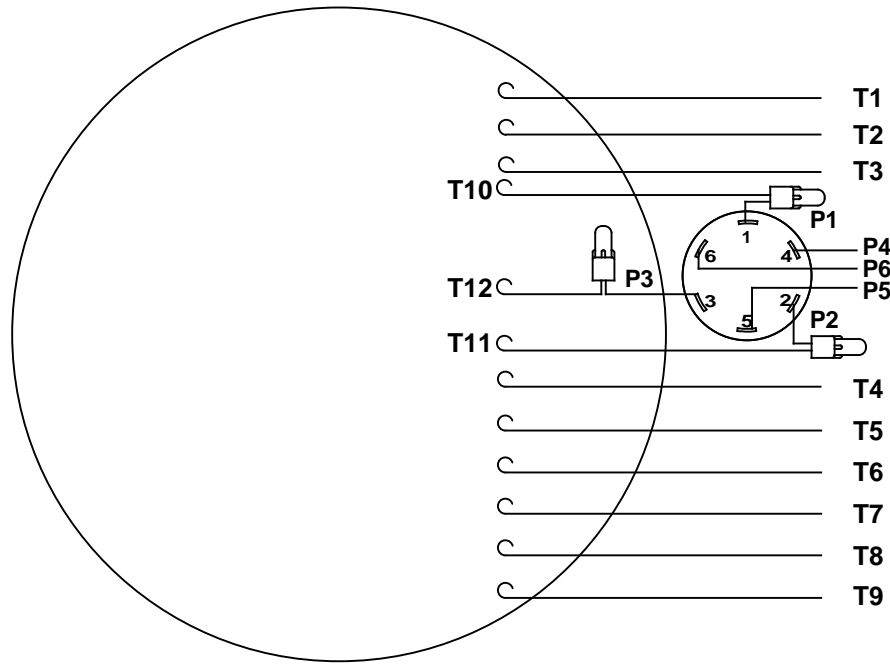
GASKETS THROUGHOUT



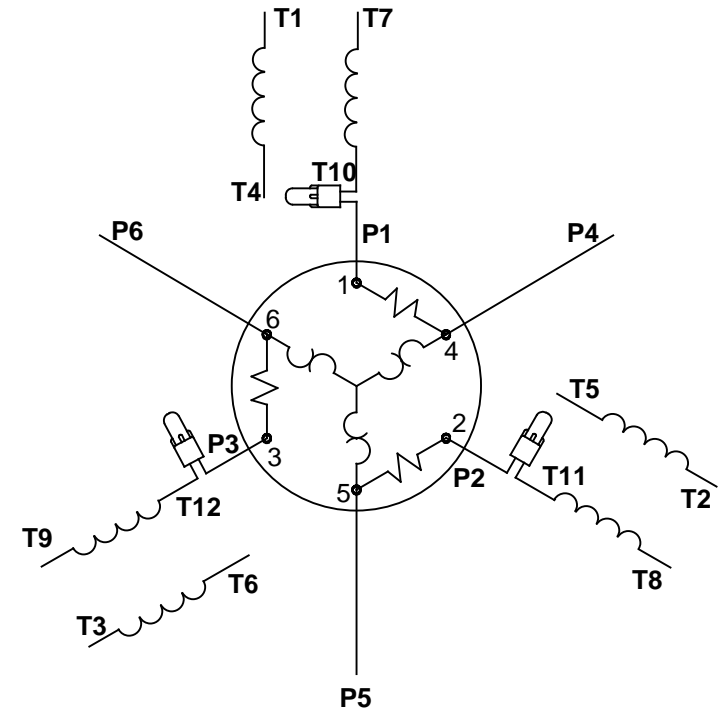
					TOLERANCES UNLESS OTHERWISE SPECIFIED		LEESON ELECTRIC CORPORATION			
					DECIMALS					
					.00	± .01	DRAWN RSK 10/01/98	TITLE		
					.000	± .005	CH'K'D.	OUTLINE - JX184T FRAME		
01	UPDATED PER MT2 CONVERSION	ISAAC 10-0375	LST	1/27/10	.0000	± .0005	APPR.	TENV - RIGID MOUNT		
NO.	REVISION		BY	DATE	FRACTIONS	± 1/64	SCALE	1=2	MAT'L	
THIS DRAWING IN DESIGN AND DETAIL IS OUR PROPERTY AND MUST NOT BE USED EXCEPT IN CONNECTION WITH OUR WORK ALL RIGHTS OF DESIGN AND INVENTION ARE RESERVED					ANGLES	± 1/2°	REF.	035338	FINISH	VILTER
					INCH/MM		FMF	131450	SIZE	B
							DRAWING NO.		OL131450	

NLV

VIEW FROM OUTSIDE OF MOTOR AT SWITCH END.



LINE LEADS



RBC PROPRIETARY AND CONFIDENTIAL INFORMATION
This document is the property of REGAL BELOIT CORPORATION ("RBC") including its subsidiaries and divisions and contains proprietary information of RBC. This document is loaned on the express condition that neither it nor the information contained therein shall be disclosed to others without the express written consent of RBC, and that the information shall be used by the recipient only as approved expressly by RBC. This document shall be returned to RBC upon its request. This document may be subject to certain restrictions under U.S. export control laws and regulations.

VOLTAGE	L1	L2	L3	JOIN	SEPARATE
HIGH	T1	T2	T3	(T4,T7) (T5,T8) (T6,T9)	(P4) (P5) (P6)
LOW	T1,T7	T2,T8	T3,T9	(T4,P4) (T5,P5) (T6,P6)	

				TOLERANCES UNLESS SPECIFIED		<div>LEESON</div> <div>ELECTRIC MOTORS GEARMOTORS AND DRIVES</div>	DRAWN VJB 02/18/11	
				DEC	INCHES		CHK	
				.X	±.1		APPR	
				.XX	±.01		SCALE 1:1	
				.XXX	±.005		REF	
02	ADDED REV TO AGREE WITH ORACLE	ARV 4/26/2011	KH	.XXXX	±.0005	TITLE EXTERNAL WIRING DIAGRAM TYPE "T" W/PROTECTOR	MAT'L DECAL - 004023-01	FMF
NO	REVISION	BY & DATE	CHK	ANG	±1/2°	FINISH	PAGE OF	
THIRD ANGLE PROJECTION				RFP	PREV	SIZE A	DRAWING NO 005020-02	REV 02
NETWORK FILE NAME 00502002								