

PRODUCT INFORMATION PACKET



Model No: 131370.00

Catalog No: 131370.00

1.5HP..1740/1440RPM.182.DP.115/230V.1PH.60/50HZ.CONT.MANUAL.40C.1.15/1.15SF.RIGID..P182K17DB5B

Regal and Leeson are trademarks of Regal Rexnord Corporation or one of its affiliated companies.

©2023 Regal Rexnord Corporation, All Rights Reserved. MC017097E





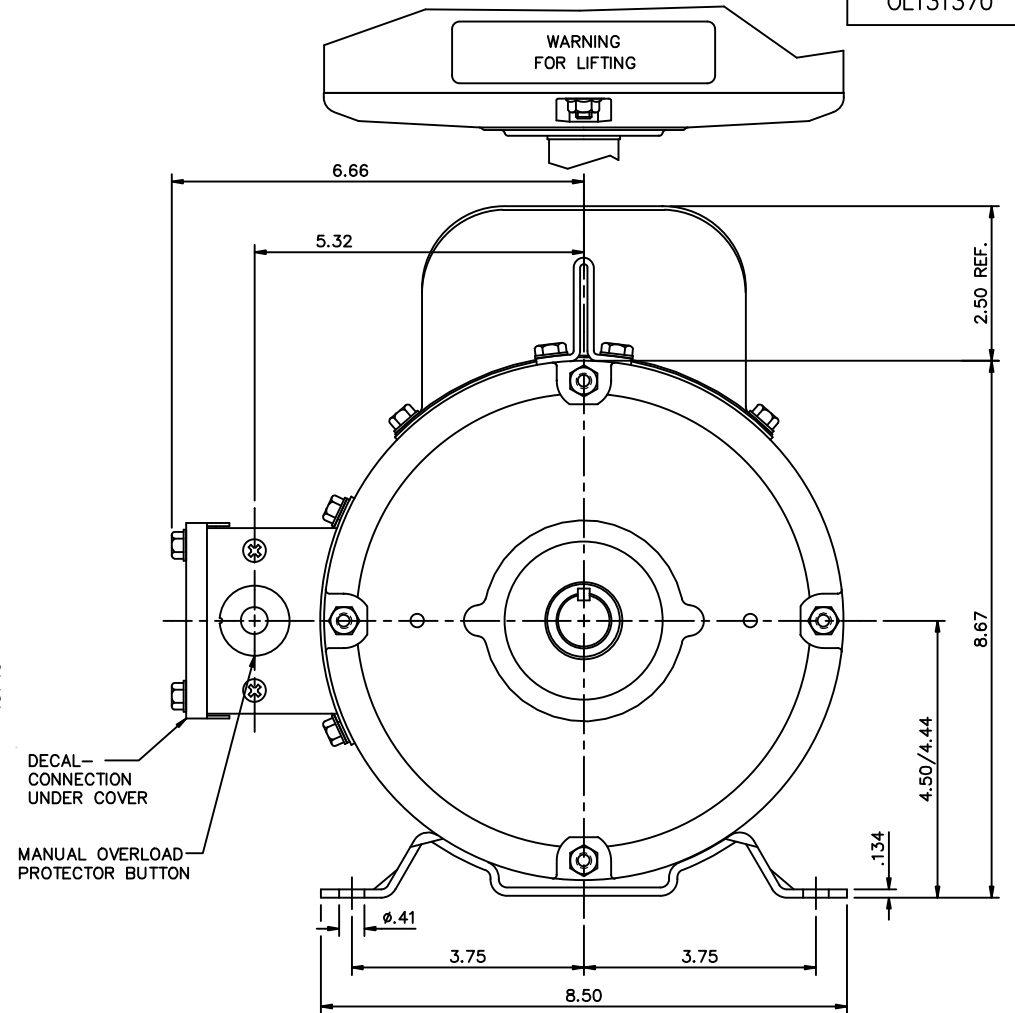
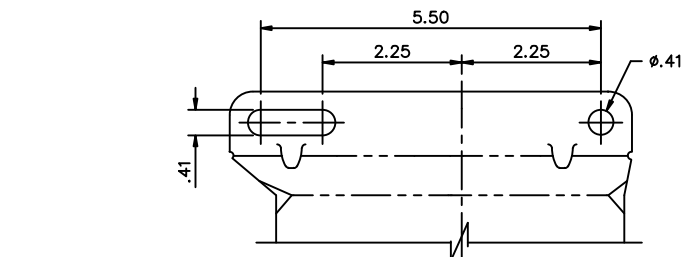
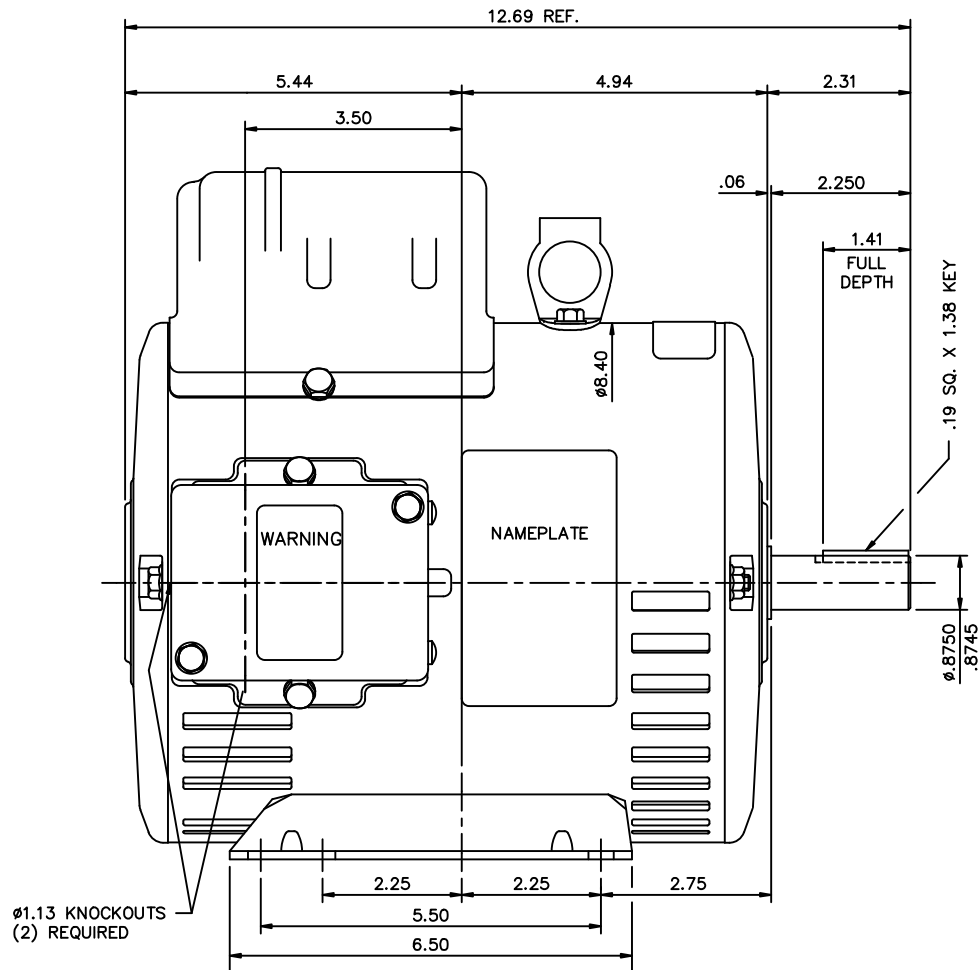
Nameplate Specifications

Phase	1	Output HP	1.50 & 1.50 Hp
Output KW	1.1 & 1.1 kW	Voltage	115/230 & 110/220 V
Speed	1740 & 1440 rpm	Service Factor	1.15 & 1.15
Frame	JX182TZ	Enclosure	Drip Proof
Thermal Protection	Manual	Efficiency	77 %
Ambient Temperature	40 °C	Frequency	60 & 50 Hz
Current	13/6.5 & 15.4/7.7 A	Power Factor	97
Duty	Continuous	Insulation Class	F
Design Code	NO DESIGN CODE	KVA Code	K
Drive End Bearing Size	6206	Opp Drive End Bearing Size	6205
UL	Recognized	CSA	Y
CE	N	IP Code	22
Number of Speeds	1		

Technical Specifications

Electrical Type	Capacitor Start Capacitor Run	Starting Method	Across The Line
Poles	4	Rotation	Selective Counterclockwise
Resistance Main	0 Ohms	Mounting	Rigid Base
Motor Orientation	Horizontal	Drive End Bearing	Ball
Opp Drive End Bearing	Ball	Frame Material	Rolled Steel
Shaft Type	Single Special Extension	Assembly/Box Mounting	F1 ONLY
Outline Drawing	OL131370	Connection Drawing	005053.02

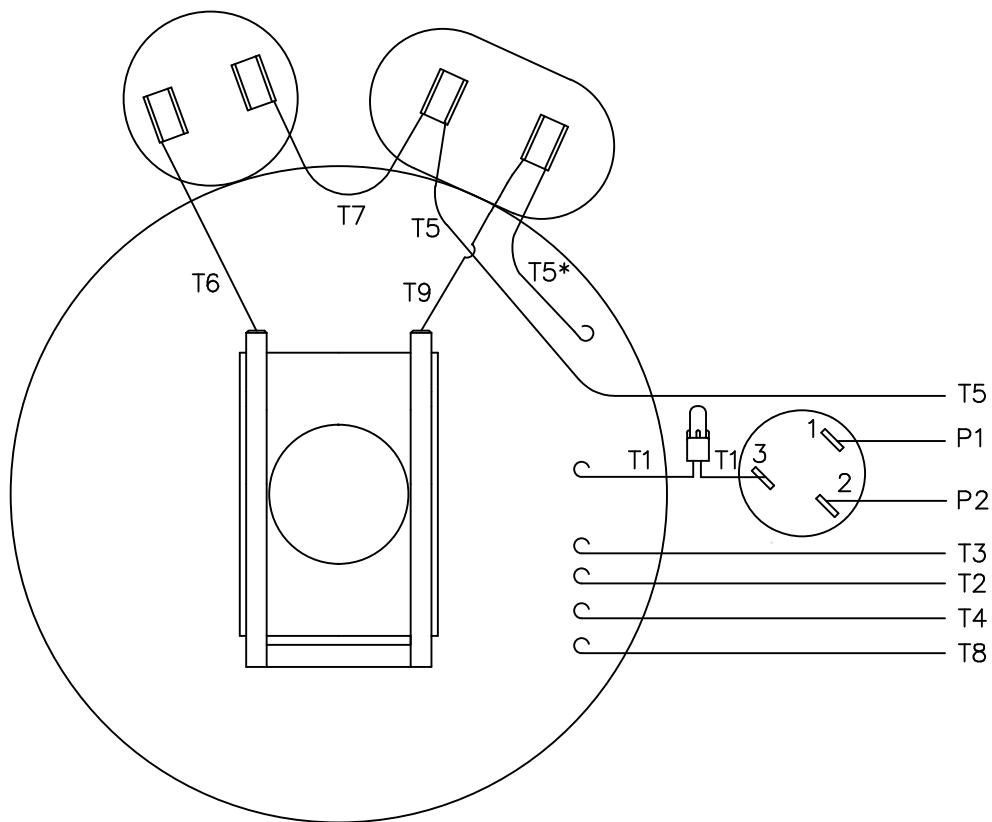
This is an uncontrolled document once printed or downloaded and is subject to change without notice. Date Created:06/23/2023



GASKETS THROUGHOUT

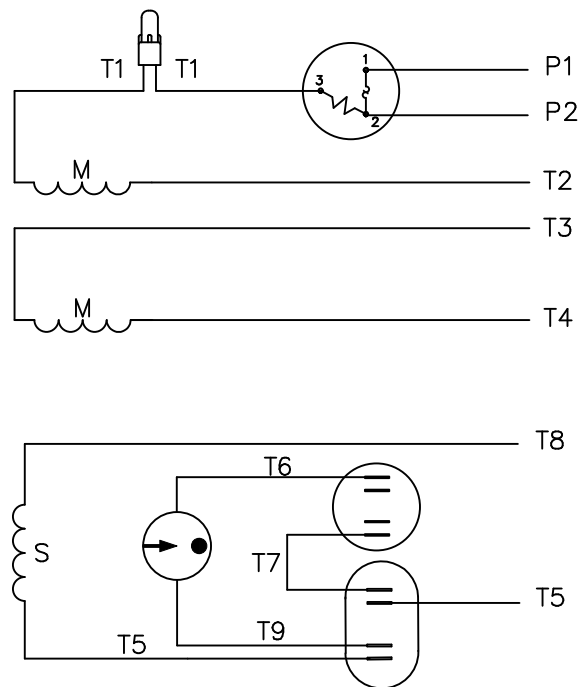
			TOLERANCES UNLESS SPECIFIED		TITLE	DRAWN RSK 01-16-99	
			DEC.	INCHES		CHK	
			.X	±.1	ELECTRIC MOTORS GEARMOTORS AND DRIVES OUTLINE - JX182TZ FRAME OPEN DRIP PROOF - RIGID MOUNT	APPD	
			.XX	±.03		SCALE	1=2
			.XXX	±.005		REF	035300
			.XXX	±.0005		FMF	131370
01	REMOVED BASE PUDDLE WELD HOLES PER ECR 85498	JWM 5/24/07	CHK	ANG ±1/2°	MAT'L	PREV	
THIS DRAWING IN DESIGN AND DETAIL IS OUR PROPERTY AND MUST NOT BE USED EXCEPT IN CONNECTION WITH OUR WORK ALL RIGHTS OF DESIGN AND INVENTION ARE RESERVED THIS IS AN ELECTRONICALLY GENERATED DOCUMENT - DO NOT SCALE THIS PRINT			RFP	CAD FILE	OL131370	SIZE B	DRAWING NO. OL131370
			DIST				REV. 01

VIEW FROM OUTSIDE OF MOTOR AT SWITCH END.



* THIS LEAD MAY BE WHITE

LINE LEADS



	ROTATION FACING LEAD END	L1	L2	JOIN	INSULATE SEPARATELY
HIGH VOLT	C.C.W.	P1	T4 T5	T2,T3 T8	P2
	C.W.	P1	T4 T8	T2,T3 T5	P2
LOW VOLT	C.C.W.	P1	T2,T4 T5	P2,T3 T8	-----
	C.W.	P1	T2,T4 T8	P2,T3 T5	-----

TOLERANCES
UNLESS SPECIFIED

DEC. INCHES

.X ±.1

.XX ±.01

.XXX ±.005

.XXXX ±.0005

ANG ±1/2"

REGAL-BELOIT *Motor Technologies Group*

DRAWN ADH 06/16/76

CHK WRK 06/30/76

APPD

SCALE 1=1

REF

FMF 6K17FB8A

PREV

04	ADDED "*" TO T5	RLW 7/22/02
03	REDRAWN ON CAD	DBT 05/27/97
NO.	REVISION	BY & DATE

CHK ANG

RFP

DIST

TITLE
EXTERNAL WIRING DIAGRAM
TYPE "K" W/PROTECTOR

MAT'L. DECAL 004011

FINISH

CAD FILE 00505302

SIZE A

DRAWING NO.

005053-02

REV.

04

THIS DRAWING IN DESIGN AND DETAIL IS OUR PROPERTY AND MUST NOT BE USED EXCEPT
IN CONNECTION WITH OUR WORK ALL RIGHTS OF DESIGN AND INVENTION ARE RESERVED
THIS IS AN ELECTRONICALLY GENERATED DOCUMENT - DO NOT SCALE THIS PRINT