

PRODUCT INFORMATION PACKET

Model No: 131292.00

Catalog No: 131292.00

3HP..1740RPM.184.DP./208-230V.1PH.60HZ.CONT.MANUAL.40C.1.15SF.RIGID.BRAKEMOTOR.P184C17DB17B

Regal and are trademarks of Regal Rexnord Corporation or one of its affiliated companies.
©2022 Regal Rexnord Corporation, All Rights Reserved. MC017097E



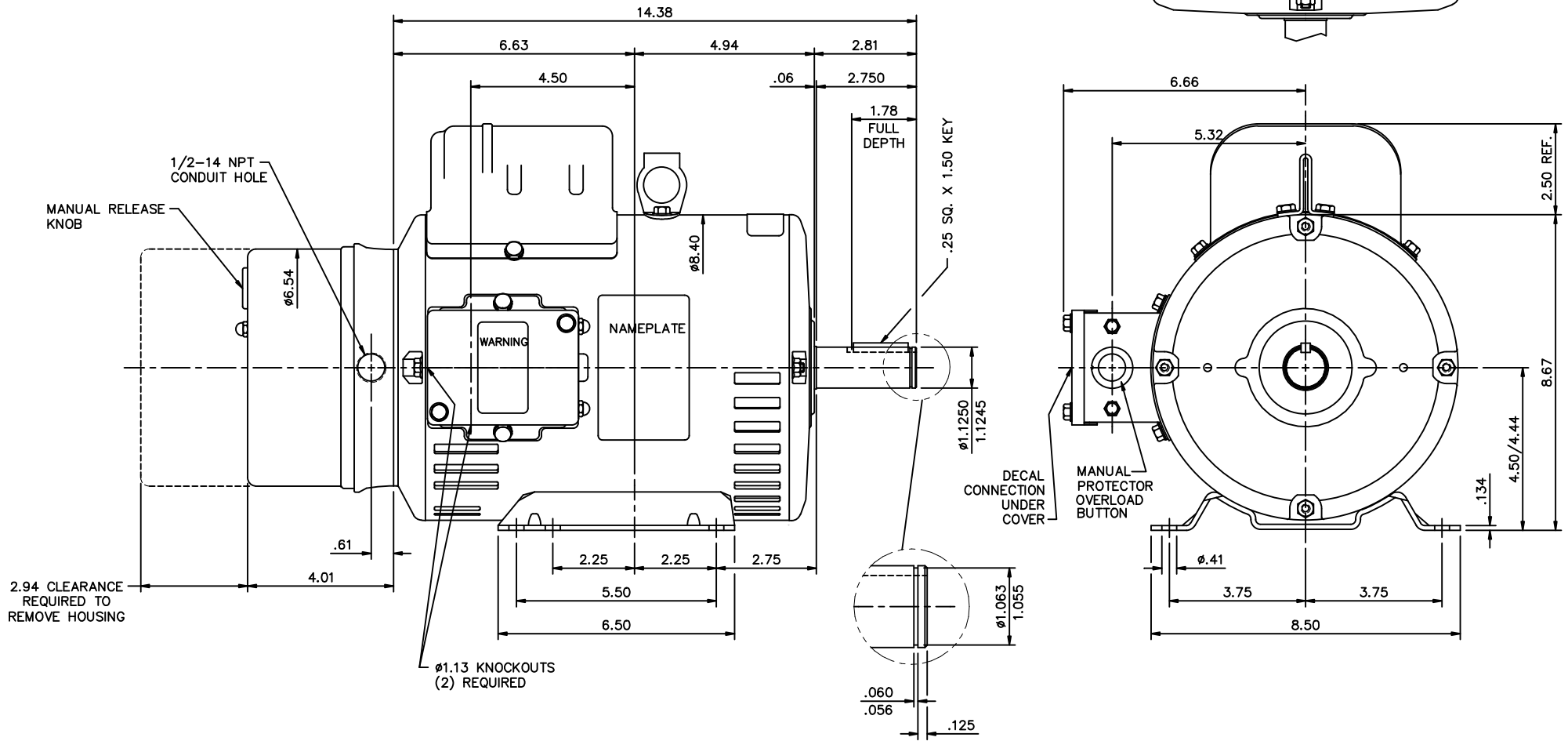
Nameplate Specifications

Output HP	3 Hp	Output KW	2.2 kW
Frequency	60 Hz	Voltage	208-230 V
Current	16.9 A	Speed	1740 rpm
Service Factor	1.15	Phase	1
Efficiency	75.5 %	Power Factor	76
Duty	Continuous	Insulation Class	F
Design Code	L	KVA Code	J
Frame	184T	Enclosure	Drip Proof
Thermal Protection	Manual	Ambient Temperature	40 °C
Drive End Bearing Size	6206	Opp Drive End Bearing Size	6205
UL	Recognized	CSA	Y
CE	N	IP Code	22
Number of Speeds	1		

Technical Specifications

Electrical Type	Capacitor Start Induction Run	Starting Method	Across The Line
Poles	4	Rotation	Selective Counterclockwise
Resistance Main	0 Ohms	Mounting	Rigid Base
Motor Orientation	Horizontal	Drive End Bearing	Ball
Opp Drive End Bearing	Ball	Frame Material	Rolled Steel
Shaft Type	T	Shaft Diameter	1.250 in
Assembly/Box Mounting	F1 ONLY		
Connection Drawing	005110.01	Outline Drawing	OL131292

This is an uncontrolled document once printed or downloaded and is subject to change without notice. Date Created:11/01/2022

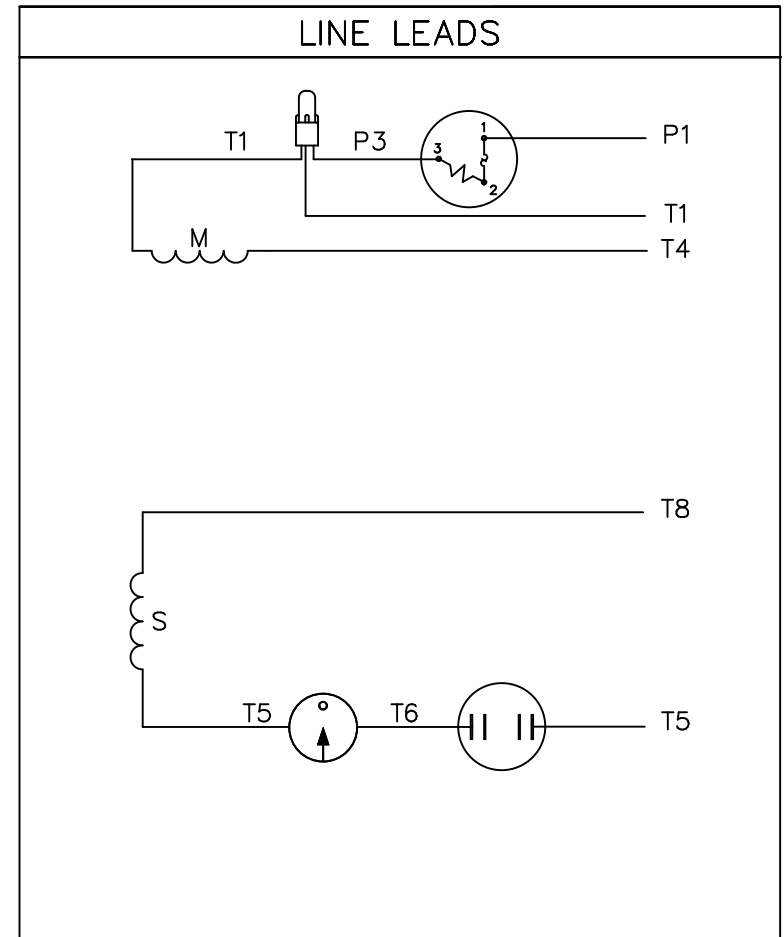
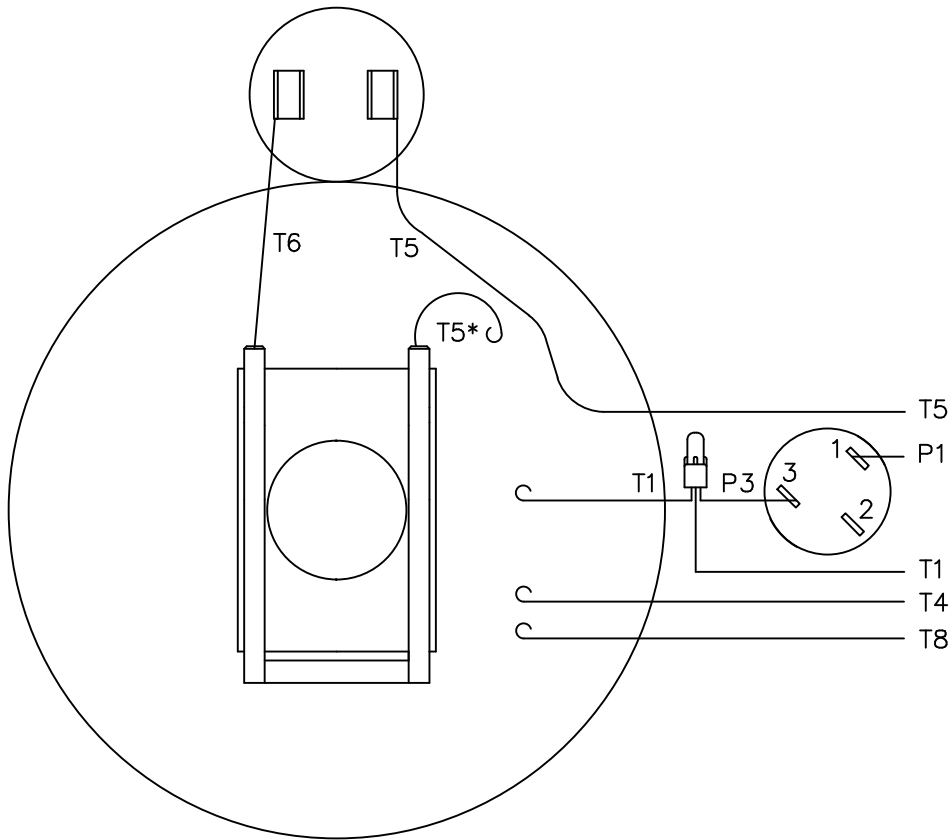


GASKETS THROUGHOUT

				TOLERANCES UNLESS OTHERWISE SPECIFIED		LEESON ELECTRIC CORPORATION				
				DECIMALS						
				.00	± .01	DRAWN	RSK 10/18/98	TITLE		
				.000	± .005	CH'K'D.		OUTLINE - LX184T FRAME		
				.0000	± .0005	APPR.		OPEN DRIP PROOF - RIGID - BRAKE MOTOR		
01	ADDED DECAL	RLW	7/30/01	FRACTIONS ± 1/64		SCALE 3=8		MAT'L		
NO. REVISION BY DATE				ANGLES ± 1/2°		REF.	035086	FINISH	SIZE	DRAWING NO.
THIS DRAWING IN DESIGN AND DETAIL IS OUR PROPERTY AND MUST NOT BE USED EXCEPT IN CONNECTION WITH OUR WORK ALL RIGHTS OF DESIGN AND INVENTION ARE RESERVED				INCH/MM		FMF	131292	ERECT-A-TUBE	B	OL131292

NLV

VIEW FROM OUTSIDE OF MOTOR AT SWITCH END.



ROTATION FACING LEAD END	L1	L2	JOIN & INSULATE
C.C.W.	P1	T4,T5	T1,T8
C.W.	P1	T4,T8	T1,T5

* THIS LEAD MAY BE WHITE

NO.	REVISION	BY & DATE	CHK	TOLERANCES UNLESS SPECIFIED	
				DEC.	INCHES
10	ALTERNATE T5 LEAD MARKING WAS RED	RLW 8/6/02		.X	±.1
09	ADDED ALTERNATE T5 LEAD MARKING	RLW 6/5/02	KH	.XX	±.01
08	ADDED MISSING "T4" LEAD FROM EB VIEW	DBT 09/22/97	PG	.XXX	±.005
07	REDRAWN ON CAD	DBT 06/24/97		.XXXX	±.0005
				ANG	±1/2°



ELECTRIC MOTORS
GEARMOTORS
AND DRIVES

DRAWN	JRW 10/21/75
CHK	TEM
APPD	10/23/75
SCALE	1=1
REF	005105
FMF	W-C63236-2
PREV	

TITLE	EXTERNAL WIRING DIAGRAM TYPE "C" W/ PROTECTOR
MAT'L.	DECAL - 004015
FINISH	

THIS DRAWING IN DESIGN AND DETAIL IS OUR PROPERTY AND MUST NOT BE USED EXCEPT IN CONNECTION WITH OUR WORK ALL RIGHTS OF DESIGN AND INVENTION ARE RESERVED THIS IS AN ELECTRONICALLY GENERATED DOCUMENT - DO NOT SCALE THIS PRINT		RFP	CAD FILE	00511001	SIZE	DRAWING NO.	REV.
		DIST	NLV		A	005110-01	10