

PRODUCT INFORMATION PACKET

Model No: 130254.00

Catalog No: 130254.00

2HP..1740RPM.182.DP./208-240V.1PH.60HZ.CONT.NOT.40C.1.15SF.RIGID..C182K17DB2H

Regal and are trademarks of Regal Rexnord Corporation or one of its affiliated companies.
©2022 Regal Rexnord Corporation, All Rights Reserved. MC017097E



Nameplate Specifications

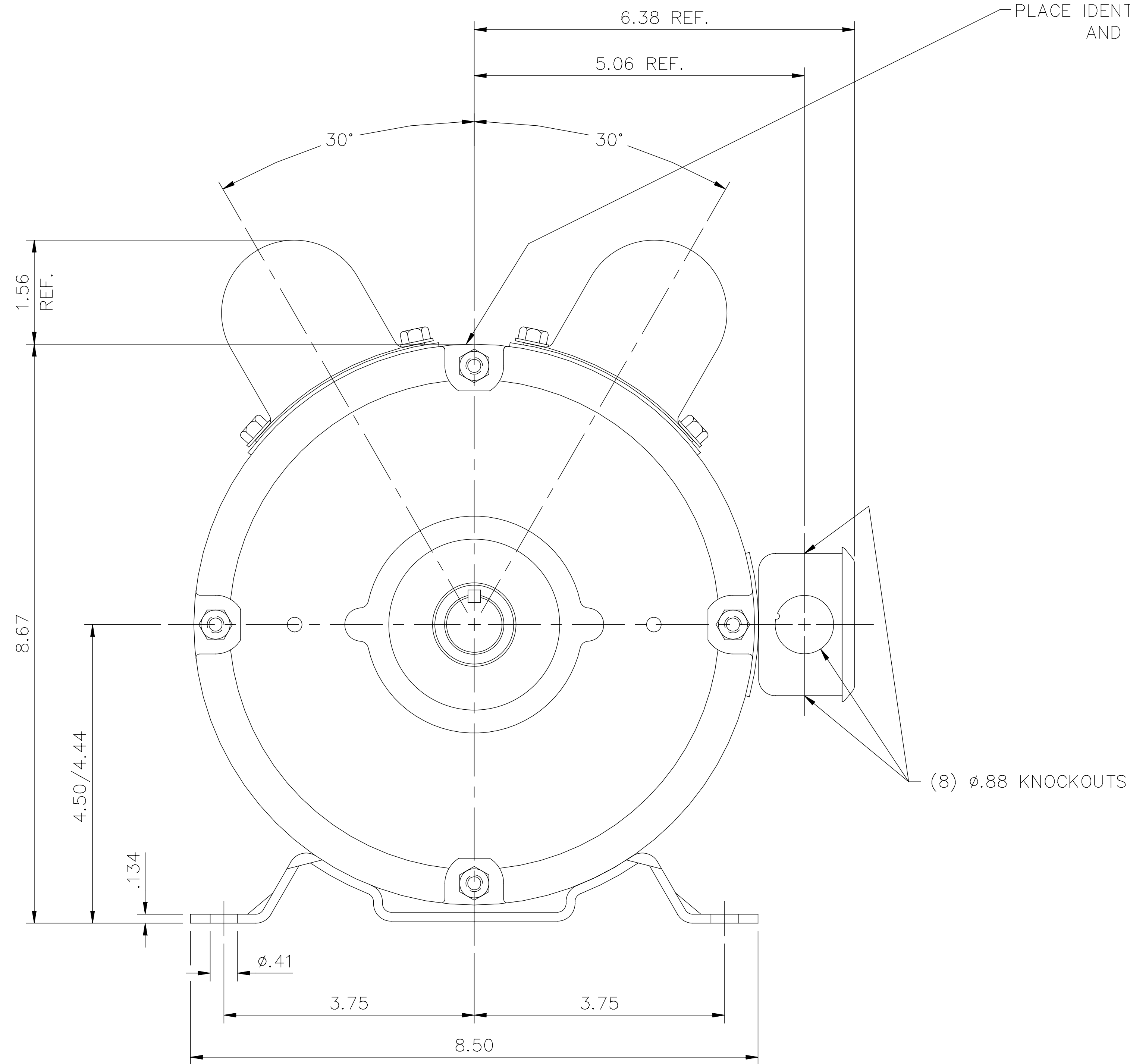
Output HP	2 Hp	Output KW	1.5 kW
Frequency	60 Hz	Voltage	208-240 V
Current	12.4/11.2 A	Speed	1740 rpm
Service Factor	1.15	Phase	1
Duty	Continuous	Insulation Class	F
Design Code	L	KVA Code	J
Frame	182TZ	Enclosure	Drip Proof
Thermal Protection	No Protection	Ambient Temperature	40 °C
Drive End Bearing Size	6206	Opp Drive End Bearing Size	6205
UL	Recognized	CSA	Y
CE	N	IP Code	22
Number of Speeds	1		

Technical Specifications

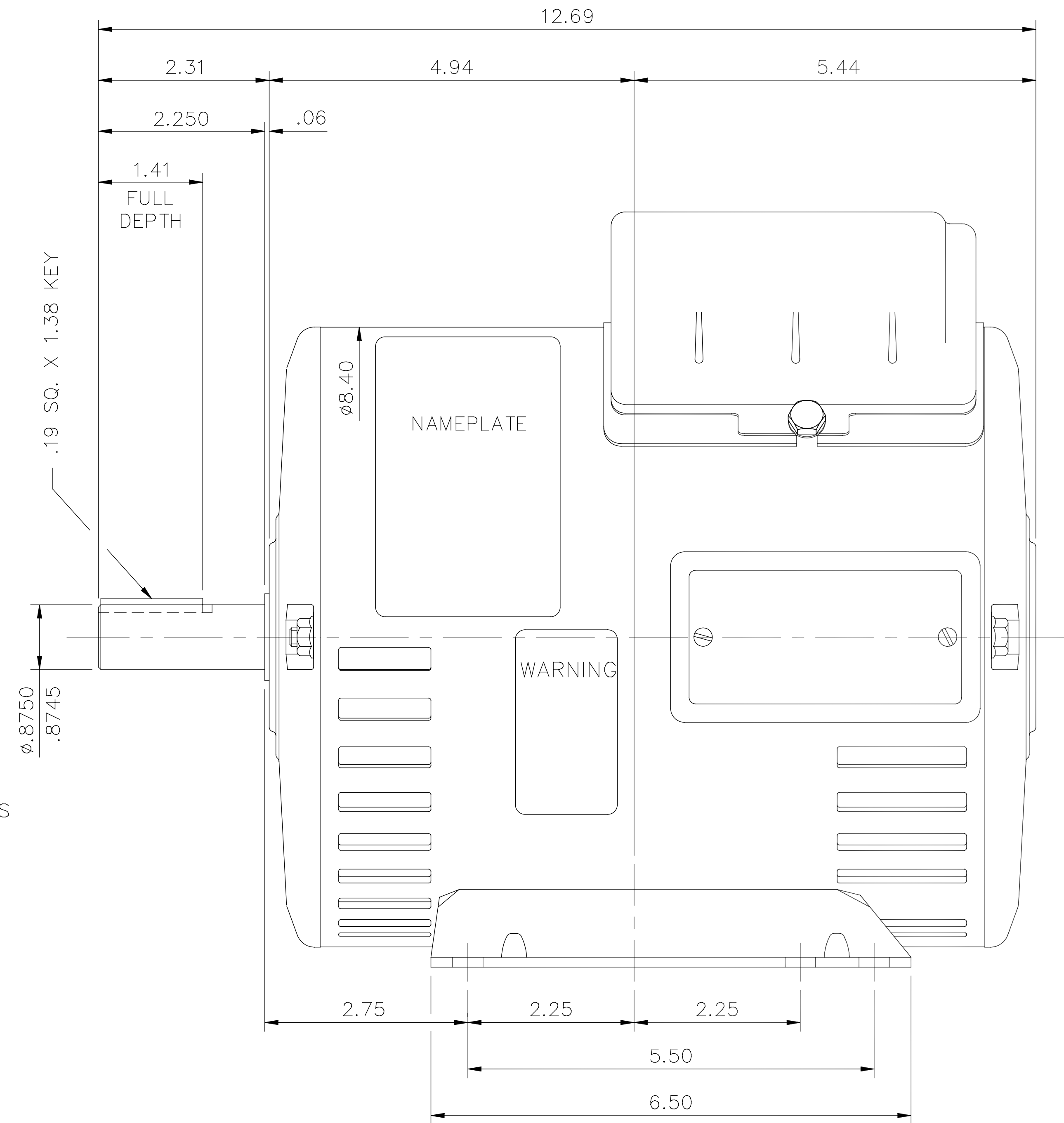
Electrical Type	Capacitor Start Capacitor Run	Starting Method	Across The Line
Poles	4	Rotation	Selective Counterclockwise
Resistance Main	1.04 Ohms	Mounting	Rigid Base
Motor Orientation	Horizontal	Drive End Bearing	Ball
Opp Drive End Bearing	Ball	Frame Material	Rolled Steel
Shaft Type	Single Special Extension	Shaft Diameter	0.875 in
Assembly/Box Mounting	F2 ONLY		
Outline Drawing	OL130254	Connection Drawing	005018.06

This is an uncontrolled document once printed or downloaded and is subject to change without notice. Date Created:11/01/2022

OL130254

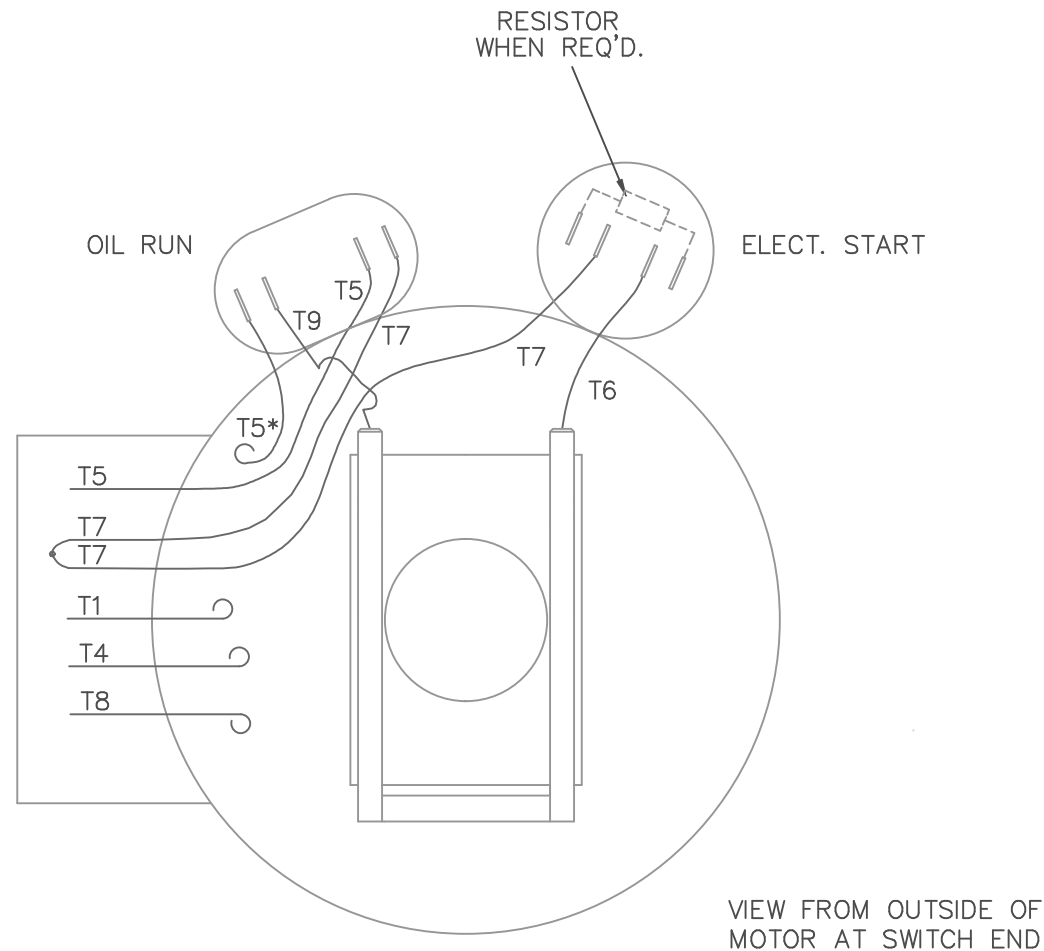


GASKETS THROUGHOUT



ORACLE REV	03
---------------	----

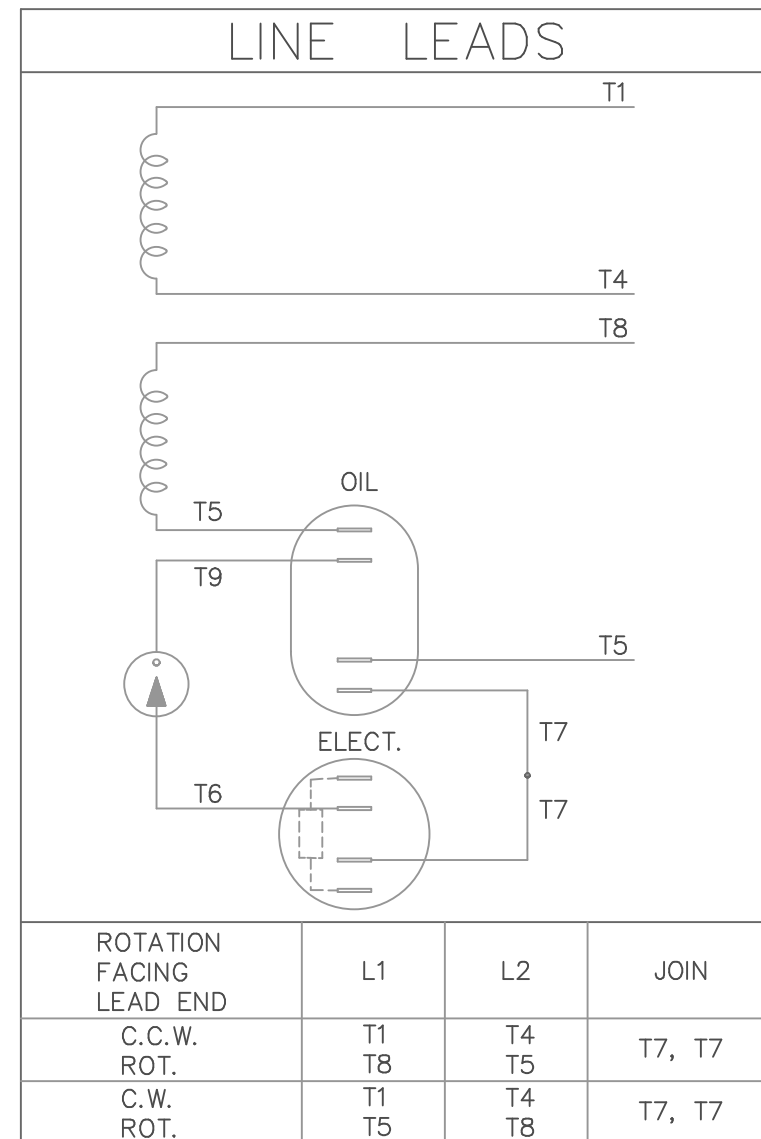
				TOLERANCES - UNLESS OTHERWISE SPECIFIED		LEESON ELECTRIC CORPORATION			
				DECIMALS					
F	UPDATED C. BOX DIMS. ECO 0080505	LST	6/26/15	.00	± .01	DRAWN RSK 07/21/99	TITLE OUTLINE - JX182TZ FRAME OPEN DRIP PROOF - RIGID MOUNT		
E	ADDED IDENTIFICATION DECAL ECO 0060288	GWS	9/16/14	.000	± .005	CH'K'D.			
D	UPDATED PER MT2 CONVERSION ISAAC 10-0303	LST	1/21/10	.0000	± .0005	APPR.	MAT'L.		
NO.	REVISION	BY	DATE	FRACTIONS	± 1/64	SCALE 1=2			
THIS DRAWING IN DESIGN AND DETAIL IS OUR PROPERTY AND MUST NOT BE USED EXCEPT IN CONNECTION WITH OUR WORK ALL RIGHTS OF DESIGN AND INVENTION ARE RESERVED				ANGLES	± 1/2*	REF. 035035	FINISH TAYLOR	SIZE B	DRAWING NO. OL130254
				INCH/MM		FMF 130254	COMPANY		




NOTE: BOTH T7'S MUST BE CONNECTED TOGETHER FOR PROPER MOTOR OPERATION

* THIS LEAD MAY BE WHITE

TYPE K W/O PROT.



				TOLERANCES UNLESS SPECIFIED			ELECTRIC MOTORS GEARMOTORS AND DRIVES	DRAWN ADH 08/30/78	
NO.	REVISION	BY & DATE	CHK	ANG	±1/2"			CHK	RPB 08/30/78
05	REV'D STAT. SWITCH TO MATCH PART, PER ECR 78905	BJB 08/15/02	RDW	DEC.	INCHES			APPD	JCW 08/30/78
04	ALTERNATE T5 LEAD MARKING WAS RED	RLW 08/06/02		.X	±.1			SCALE	1=2
03	ADDED ALTERNATIVE T5 LEAD MARKING	RLW 06/05/02	KH	.XX	±.01	TITLE	EXTERNAL WIRING DIAGRAM	REF	PG. 1
02	REDRAWN, BROUGHT OUT T7 LEAD TO BOX	RDW 06/05/02	PG	.XXX	±.005			FMF	182K170B2C
01	ADDED RESISTOR NOTE	DLL 04/11/79	RPB	.XXXX	±.0005	MAT'L.		PREV	
THIS DRAWING IN DESIGN AND DETAIL IS OUR PROPERTY AND MUST NOT BE USED EXCEPT IN CONNECTION WITH OUR WORK ALL RIGHTS OF DESIGN AND INVENTION ARE RESERVED THIS IS AN ELECTRONICALLY GENERATED DOCUMENT - DO NOT SCALE THIS PRINT		RFP	CAD FILE		00501806	SIZE	DRAWING NO.	REV.	
		DIST NLV				A	005018-06	05	