

# PRODUCT INFORMATION PACKET

**marathon®**  
Motors

Model No: 1013627-BR

Catalog No: 1013627

TerraMAX® Cast Iron Motor, 60 HP, 3 Ph, 60 Hz, 380 V, 1800 RPM, 225S/M Frame, TEFC



Regal and Marathon are trademarks of Regal Rexnord Corporation or one of its affiliated companies.

©2022 Regal Rexnord Corporation, All Rights Reserved. MC017097E

**RegalRexnord**

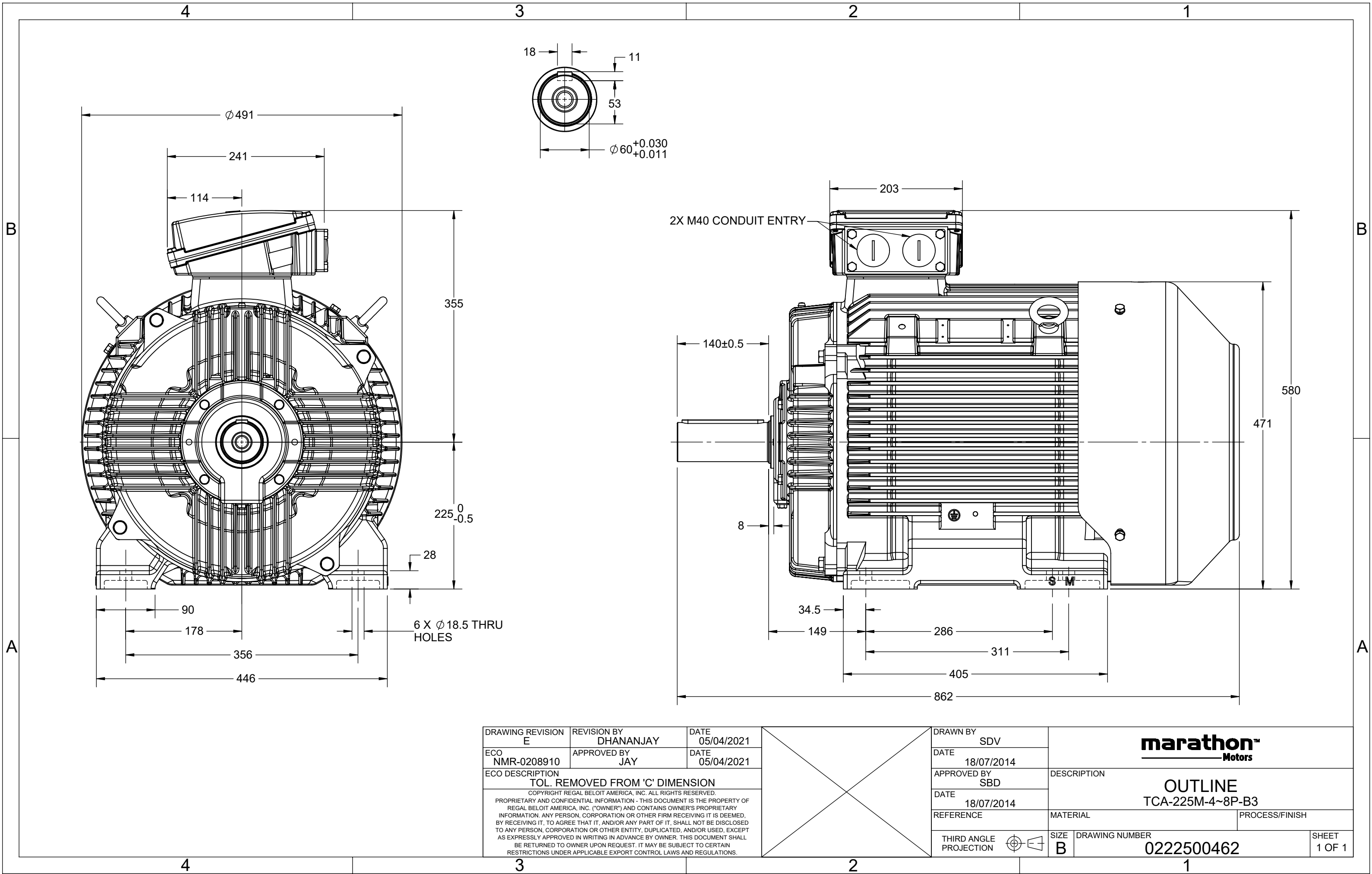
## Nameplate Specifications

Output HP	60 Hp	Output KW	45.0 kW
Frequency	60 Hz	Voltage	380 V
Current	8.0 A	Speed	1785 rpm
Service Factor	1.25	Phase	3
Efficiency	95 %	Power Factor	0.84
Duty	S1	Insulation Class	F
Frame	225S/M	Enclosure	Totally Enclosed Fan Cooled
Thermal Protection	No Protection	Ambient Temperature	40 °C
Drive End Bearing Size	6313	Opp Drive End Bearing Size	6213
UL	No	CSA	No
CE	No	IP Code	55
Number of Speeds	1		

## Technical Specifications

Electrical Type	Squirrel Cage	Starting Method	Direct On Line
Poles	4	Rotation	Clockwise
Mounting	B3	Motor Orientation	Horizontal
Drive End Bearing	C3	Opp Drive End Bearing	C3
Frame Material	Cast	Shaft Type	Keyed
Overall Length	862 mm	Frame Length	425 mm
Shaft Diameter	60 mm	Shaft Extension	140 mm
Assembly/Box Mounting	TOP		
Outline Drawing	0222500462		

This is an uncontrolled document once printed or downloaded and is subject to change without notice. Date Created:12/02/2022



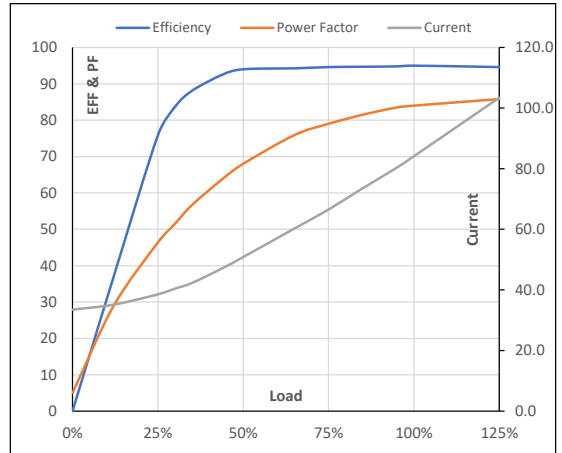
Model No. 1013627

Enclosure	U (V)	Δ / Y Conn	f [Hz]	P [kW]	P [hp]	I [A]	n [RPM]	T [kgm]	T [Nm]	IE Class	Amb [°C]	Duty	Elevation [m]	Inertia [kg-m <sup>2</sup> ]	Weight [kg]
TEFC	380	Δ	60	45	60	84.1	1785	24.08	236.18	IR3	40	S1	1000	2.852	401

**Motor Load Data**

Load Point		NL	1/4FL	1/2FL	3/4FL	FL	5/4FL
Current	A	33.5	38.5	50.8	66.5	84.1	103.4
Torque	Nm	0.0	59.5	119.2	179.2	236.2	300.0
Speed	r/min	1800	1796	1793	1789	1785	1780
Efficiency	%	0.0	75.8	94.0	94.6	95.0	94.6
Power Factor	%	5.0	46.4	68.0	79.0	84.0	85.8

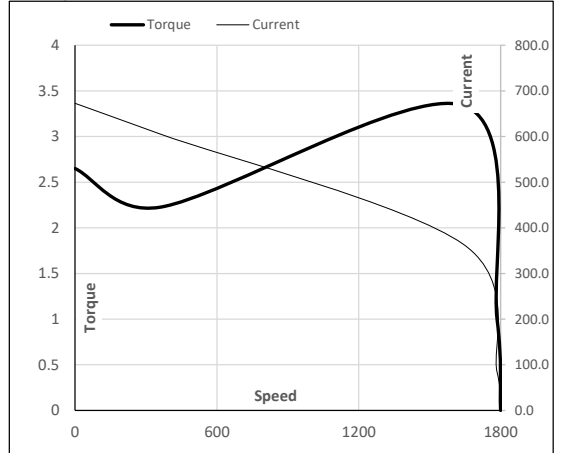
**Performance vs Load Chart**



**Motor Speed Torque Data**

Load Point		LR	P-Up	BD	Rated	NL
Speed	r/min	0	360	1642	1785	1800
Current	A	672.8	605.5	364.1	84.1	33.5
Torque	pu	2.7	2.2	3.3	1	0

**Starting Characteristics Chart**



**NOTE** Refer data sheet for applicable standard and tolerances on performance parameters

Issued By  
Issued Date