

# PRODUCT INFORMATION PACKET

**marathon®**  
Motors

Model No: 1011626-BR

Catalog No: 1011626

TerraMAX® Cast Iron Motor, 60 HP, 3 Ph, 60 Hz, 380 V, 1200 RPM, 250S/M Frame, TEFC



Regal and Marathon are trademarks of Regal Rexnord Corporation or one of its affiliated companies.

©2022 Regal Rexnord Corporation, All Rights Reserved. MC017097E

**RegalRexnord**

## Nameplate Specifications

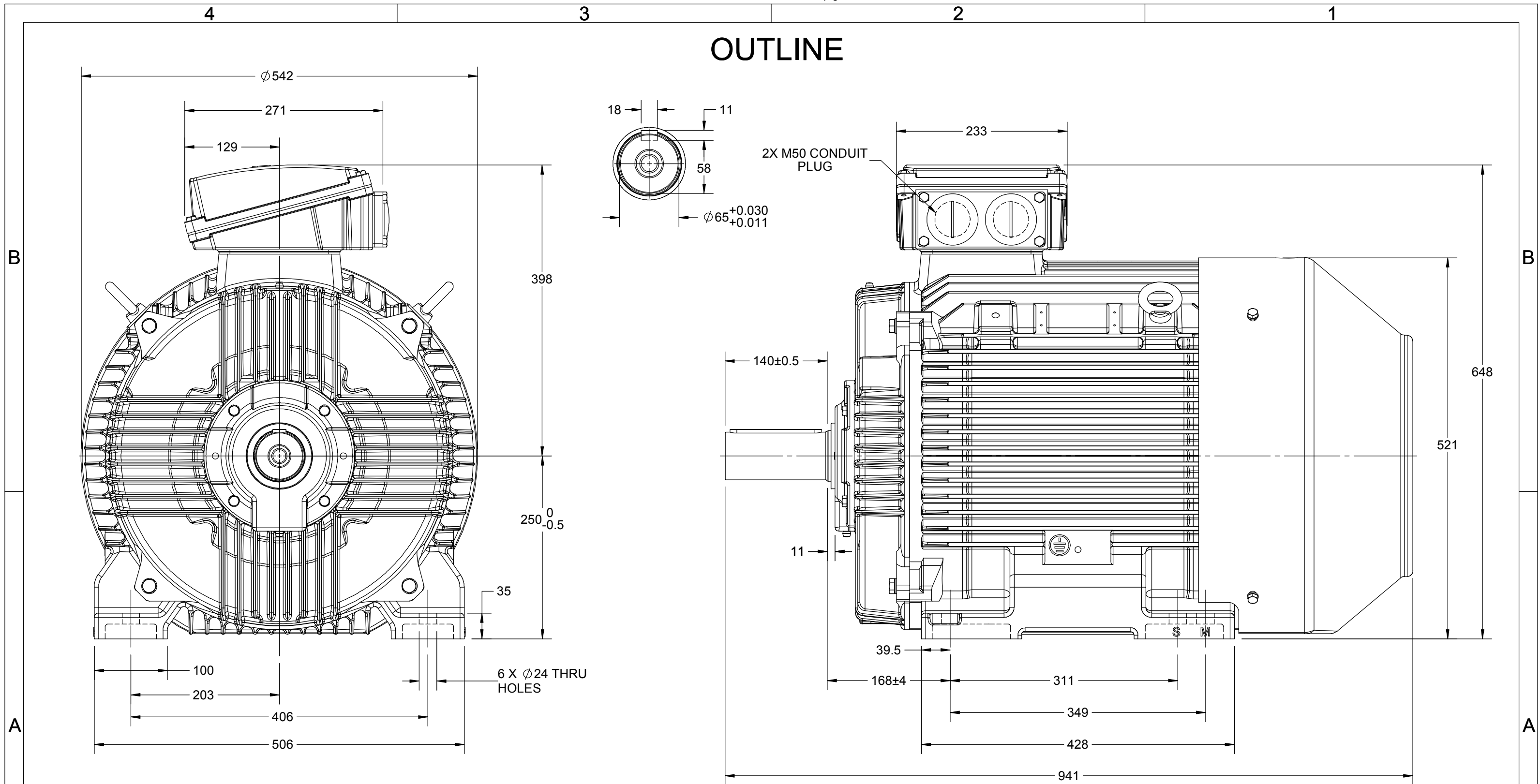
Output HP	60 Hp	Output KW	45.0 kW
Frequency	60 Hz	Voltage	380 V
Current	87.7 A	Speed	1189 rpm
Service Factor	1.25	Phase	3
Efficiency	94.5 %	Power Factor	0.81
Duty	S1	Insulation Class	F
Frame	250S/M	Enclosure	Totally Enclosed Fan Cooled
Thermal Protection	No Protection	Ambient Temperature	40 °C
Drive End Bearing Size	6314	Opp Drive End Bearing Size	6314
UL	No	CSA	No
CE	No	IP Code	55
Number of Speeds	1		

## Technical Specifications

Electrical Type	Squirrel Cage	Starting Method	Direct On Line
Poles	6	Rotation	Clockwise
Mounting	B3	Motor Orientation	Horizontal
Drive End Bearing	C3	Opp Drive End Bearing	C3
Frame Material	Cast	Shaft Type	Keyed
Overall Length	941 mm	Frame Length	460 mm
Shaft Diameter	65 mm	Shaft Extension	140 mm
Assembly/Box Mounting	TOP		
Outline Drawing	0225000378		

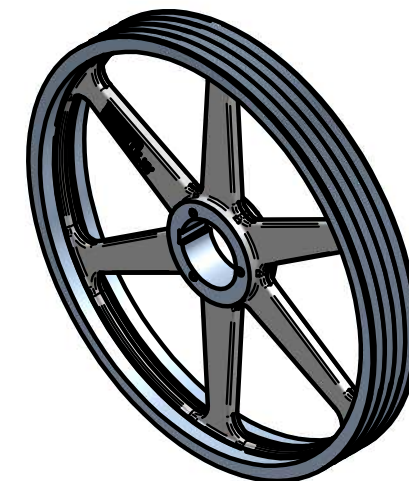
This is an uncontrolled document once printed or downloaded and is subject to change without notice. Date Created:12/02/2022

## OUTLINE

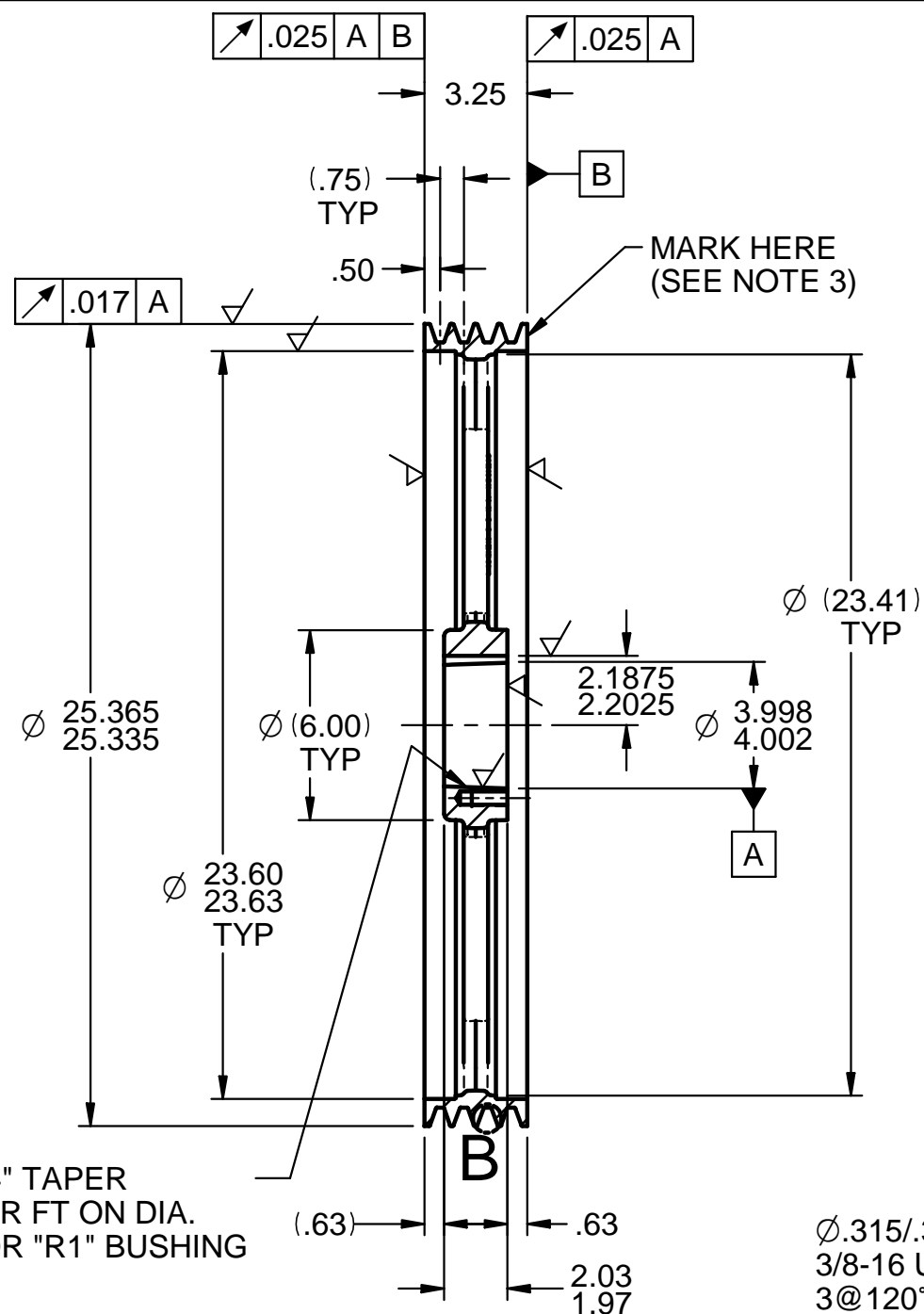
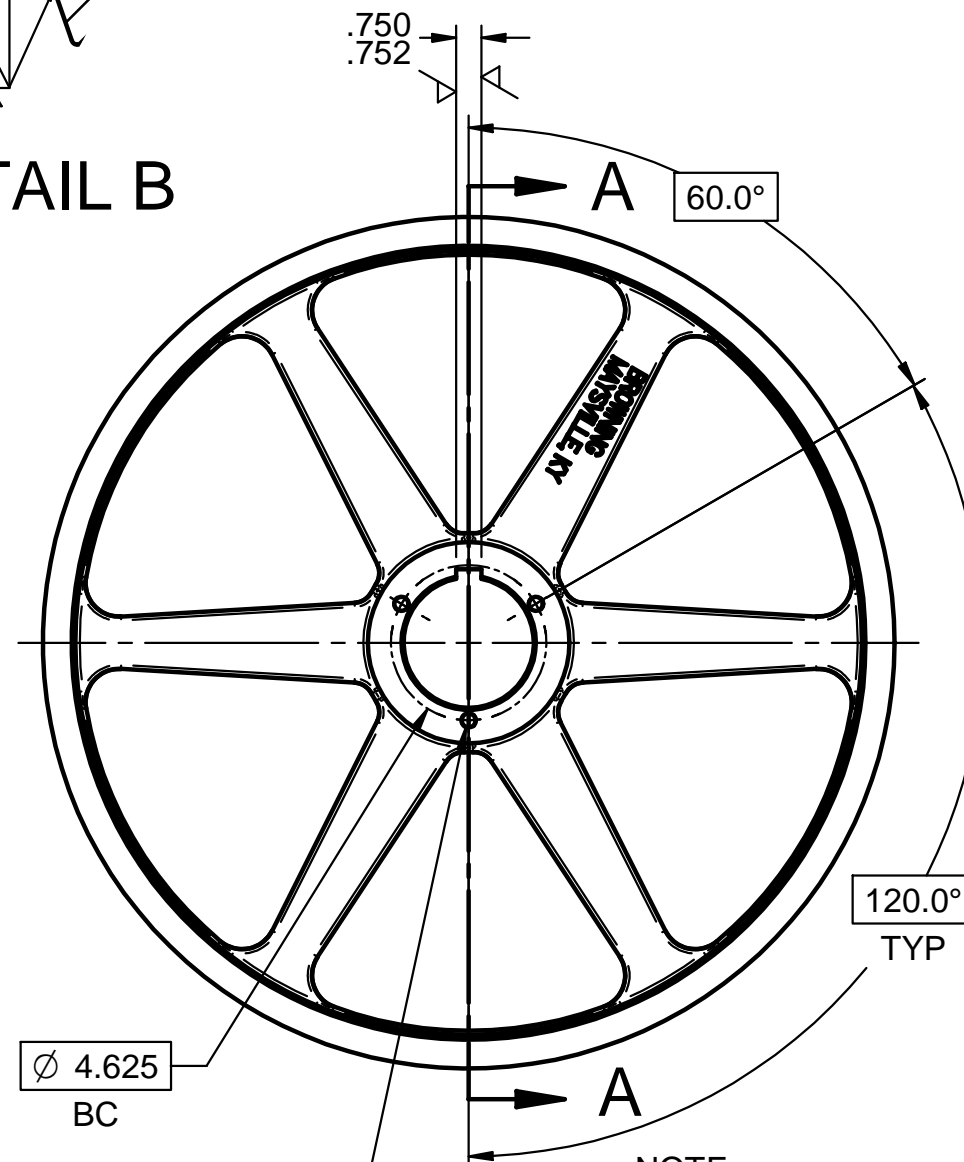


DRAWING REVISION C	REVISION BY NIV	DATE 29/04/2019
ECO ECO-0167240	APPROVED BY SR	DATE 29/04/2019
ECO DESCRIPTION MODEL UPDATED		
COPYRIGHT REGAL BELOIT AMERICA, INC. ALL RIGHTS RESERVED. PROPRIETARY AND CONFIDENTIAL INFORMATION - THIS DOCUMENT IS THE PROPERTY OF REGAL BELOIT AMERICA, INC. ("OWNER") AND CONTAINS OWNER'S PROPRIETARY INFORMATION. ANY PERSON, CORPORATION OR OTHER FIRM RECEIVING IT IS DEEMED, BY RECEIVING IT, TO AGREE THAT IT, AND/OR ANY PART OF IT, SHALL NOT BE DISCLOSED TO ANY PERSON, CORPORATION OR OTHER ENTITY, DUPLICATED, AND/OR USED, EXCEPT AS EXPRESSLY APPROVED IN WRITING IN ADVANCE BY OWNER. THIS DOCUMENT SHALL BE RETURNED TO OWNER UPON REQUEST. IT MAY BE SUBJECT TO CERTAIN RESTRICTIONS UNDER APPLICABLE EXPORT CONTROL LAWS AND REGULATIONS.		

DRAWN BY SDV	<b>marathon™</b> Motors		
DATE 18/07/2014			
APPROVED BY SBD	DESCRIPTION OUTLINE		
DATE 18/07/2014	250FR-B3 MTG. MOTOR TYPE: TCA/QCA		
REFERENCE	MATERIAL	PROCESS/FINISH	
THIRD ANGLE PROJECTION	SIZE B	DRAWING NUMBER 0225000378	SHEET 1 OF 1



DETAIL B



SECTION A-A

- NOTE:
1. GROOVE DETAILS: 4 STD. 38° "B" GROOVE PER ENG 7.3.9
  2. BREAK ALL SHARP CORNERS .03 X 45° MAX. EXCEPT KEYWAY, KEYWAY SHOULD HAVE MINIMAL EDGE BREAK.
  3. MARKING : "BROWNING" AND "4B250R"
  4. BALANCE: 1 OZ @ RIM OD 12.6750 OZ IN

REV	ECN #	REMARKS	CASTING 5B250R CSTG (4006870)	Unless Otherwise Specified Dimensions are in Inches	<div><div><div>the power of</div><div>EPT</div></div><div><div>EMERSON</div><div>Industrial Automation</div></div></div> <div>EPT GEARING &amp; COMPONENTS</div> <div>Maysville, KY 41056</div> <div>Confidential Property of EPT Gearing &amp; Components</div>	DWN: S.V.JR DATE: 01/25/68	TITLE  "B" SHEAVE 4B250R			
E	08-13897	UPDATED & REDRAWN IN SE	MATERIAL	TOLERANCES		CHK'D: SA DATE: 01/25/68				
			---	Dim X.X ± .030	By accepting this document you agree to the following: This document and the information it contains is the property of EPT Gearing & Components. It must be held in strict confidence and be properly safeguarded by you at all times. It may only be used for the specific purpose that it was loaned to you. It may not be revealed to another party without prior written authorization from EPT Gearing & Components.	REV: GA DATE: 12/16/08	FRAME	TYPE	SHEET	
			---	Dim X.XX ± .015			-	-	1 OF 1	
			EST. WGT. (LBS.) 66.0	Dim X.XXX ± .005						
			HEAT TREAT	Angular Dimensions ± .5° Surface Finish 125✓						
			---			DO NOT SCALE DRAWING	DRAWING NUMBER			REV
			FINISH COATING STD GRAY PER ENG 7.1.1.2	- Dimensions in ( ) are for reference purposes only - Remove All Flashing			1011626			F

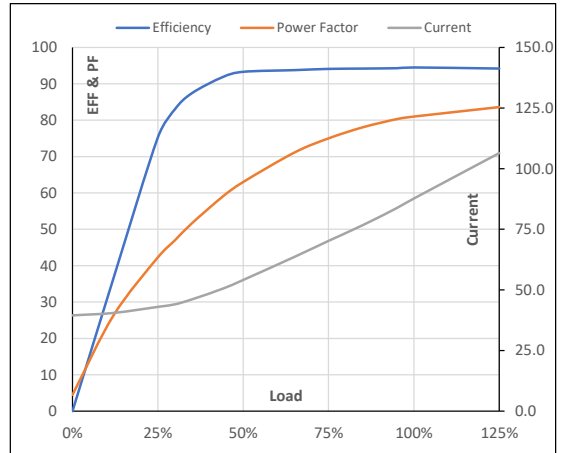
**Model No.** 1011626

Enclosure	U (V)	Δ / Y Conn	f [Hz]	P [kW]	P [hp]	I [A]	n [RPM]	T [kgm]	T [Nm]	IE Class	Amb [°C]	Duty	Elevation [m]	Inertia [kg-m <sup>2</sup> ]	Weight [kg]
TEFC	380	Δ	60	45	60	87.7	1189	36.08	353.78	IR3	40	S1	1000	8.646	560

**Motor Load Data**

Load Point		NL	1/4FL	1/2FL	3/4FL	FL	5/4FL
Current	A	39.5	43.0	54.1	70.2	87.7	106.4
Torque	Nm	0.0	89.2	178.9	268.9	353.8	450.5
Speed	r/min	1200	1197	1195	1192	1189	1186
Efficiency	%	0.0	75.3	93.3	94.1	94.5	94.2
Power Factor	%	4.5	42.3	63.0	75.0	81.0	83.6

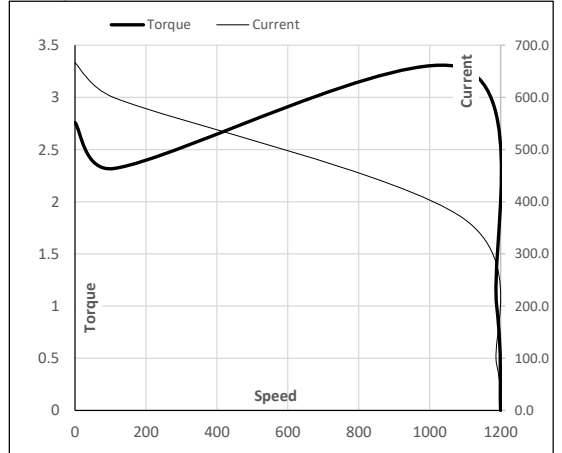
**Performance vs Load Chart**



**Motor Speed Torque Data**

Load Point		LR	P-Up	BD	Rated	NL
Speed	r/min	0	109	1094	1189	1200
Current	A	666.5	599.9	368.6	87.7	39.5
Torque	pu	2.8	2.3	3.3	1	0

**Starting Characteristics Chart**



**NOTE** Refer data sheet for applicable standard and tolerances on performance parameters

Issued By  
Issued Date