

# PRODUCT INFORMATION PACKET

**marathon®**  
Motors

Model No: 1011608-BR

Catalog No: 1011608

TerraMAX® Cast Iron Motor, 60 HP, 3 Ph, 60 Hz, 380 V, 3600 RPM, 225S/M Frame, TEFC



Regal and Marathon are trademarks of Regal Rexnord Corporation or one of its affiliated companies.

©2022 Regal Rexnord Corporation, All Rights Reserved. MC017097E

**RegalRexnord**

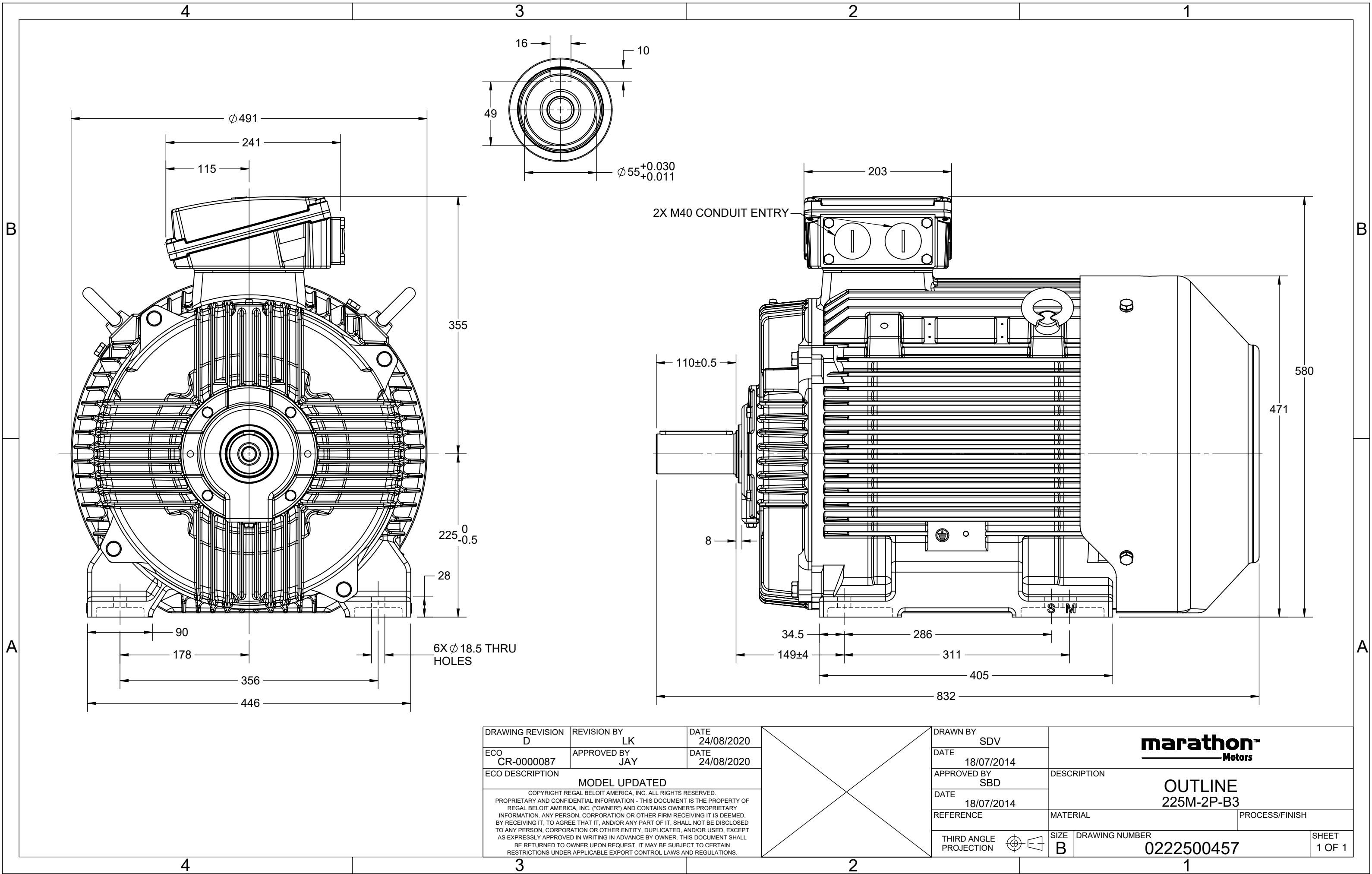
### Nameplate Specifications

Output HP	<b>60 Hp</b>	Output KW	<b>45.0 kW</b>
Frequency	<b>60 Hz</b>	Voltage	<b>380 V</b>
Current	<b>81.0 A</b>	Speed	<b>3569 rpm</b>
Service Factor	<b>1.25</b>	Phase	<b>3</b>
Efficiency	<b>93.6 %</b>	Power Factor	<b>0.88</b>
Duty	<b>S1</b>	Insulation Class	<b>F</b>
Frame	<b>225S/M</b>	Enclosure	<b>Totally Enclosed Fan Cooled</b>
Thermal Protection	<b>No Protection</b>	Ambient Temperature	<b>40 °C</b>
Drive End Bearing Size	<b>6313</b>	Opp Drive End Bearing Size	<b>6213</b>
UL	<b>No</b>	CSA	<b>No</b>
CE	<b>No</b>	IP Code	<b>55</b>
Number of Speeds	<b>1</b>		

### Technical Specifications

Electrical Type	<b>Squirrel Cage</b>	Starting Method	<b>Direct On Line</b>
Poles	<b>2</b>	Rotation	<b>Clockwise</b>
Mounting	<b>B3</b>	Motor Orientation	<b>Horizontal</b>
Drive End Bearing	<b>C3</b>	Opp Drive End Bearing	<b>C3</b>
Frame Material	<b>Cast</b>	Shaft Type	<b>Keyed</b>
Overall Length	<b>832 mm</b>	Frame Length	<b>425 mm</b>
Shaft Diameter	<b>55 mm</b>	Shaft Extension	<b>110 mm</b>
Assembly/Box Mounting	<b>TOP</b>		
Outline Drawing	<b>0222500457</b>		

This is an uncontrolled document once printed or downloaded and is subject to change without notice. Date Created:12/02/2022



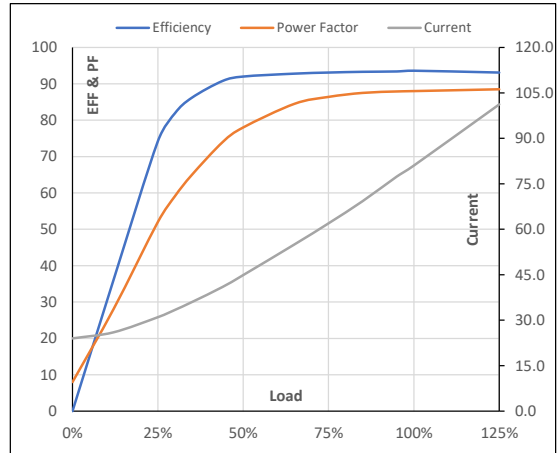
**Model No.** 1011608

Enclosure	U (V)	Δ / Y Conn	f [Hz]	P [kW]	P [hp]	I [A]	n [RPM]	T [kgm]	T [Nm]	IE Class	Amb [°C]	Duty	Elevation [m]	Inertia [kg-m <sup>2</sup> ]	Weight [kg]
TEFC	380	Δ	60	45	60	81.0	3569	11.99	117.60	IR3	40	S1	1000	1.533	382

**Motor Load Data**

Load Point		NL	1/4FL	1/2FL	3/4FL	FL	5/4FL
Current	A	24.0	31.0	44.9	62.0	81.0	101.2
Torque	Nm	0.0	29.7	59.6	89.6	117.6	150.0
Speed	r/min	3600	3592	3585	3577	3569	3560
Efficiency	%	0.0	74.2	92.0	93.1	93.6	93.1
Power Factor	%	8.0	52.0	78.0	86.4	88.0	88.5

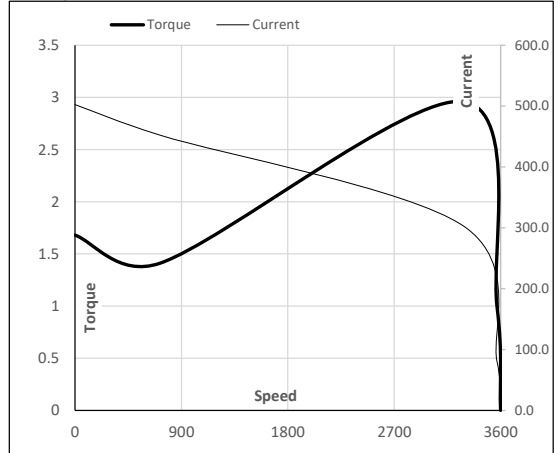
**Performance vs Load Chart**



**Motor Speed Torque Data**

Load Point		LR	P-Up	BD	Rated	NL
Speed	r/min	0	720	3283	3569	3600
Current	A	502.4	452.2	303.3	81.0	24.0
Torque	pu	1.7	1.4	3.0	1	0

**Starting Characteristics Chart**



**NOTE** Refer data sheet for applicable standard and tolerances on performance parameters

Issued By

Issued Date