

# PRODUCT INFORMATION PACKET

**marathon®**  
Motors

Model No: 1011593-BR

Catalog No: 1011593

TerraMAX® Cast Iron Motor, 40 HP, 3 Ph, 60 Hz, 380 V, 1800 RPM, 200M/L Frame, TEFC



Regal and Marathon are trademarks of Regal Rexnord Corporation or one of its affiliated companies.

©2022 Regal Rexnord Corporation, All Rights Reserved. MC017097E

**RegalRexnord**

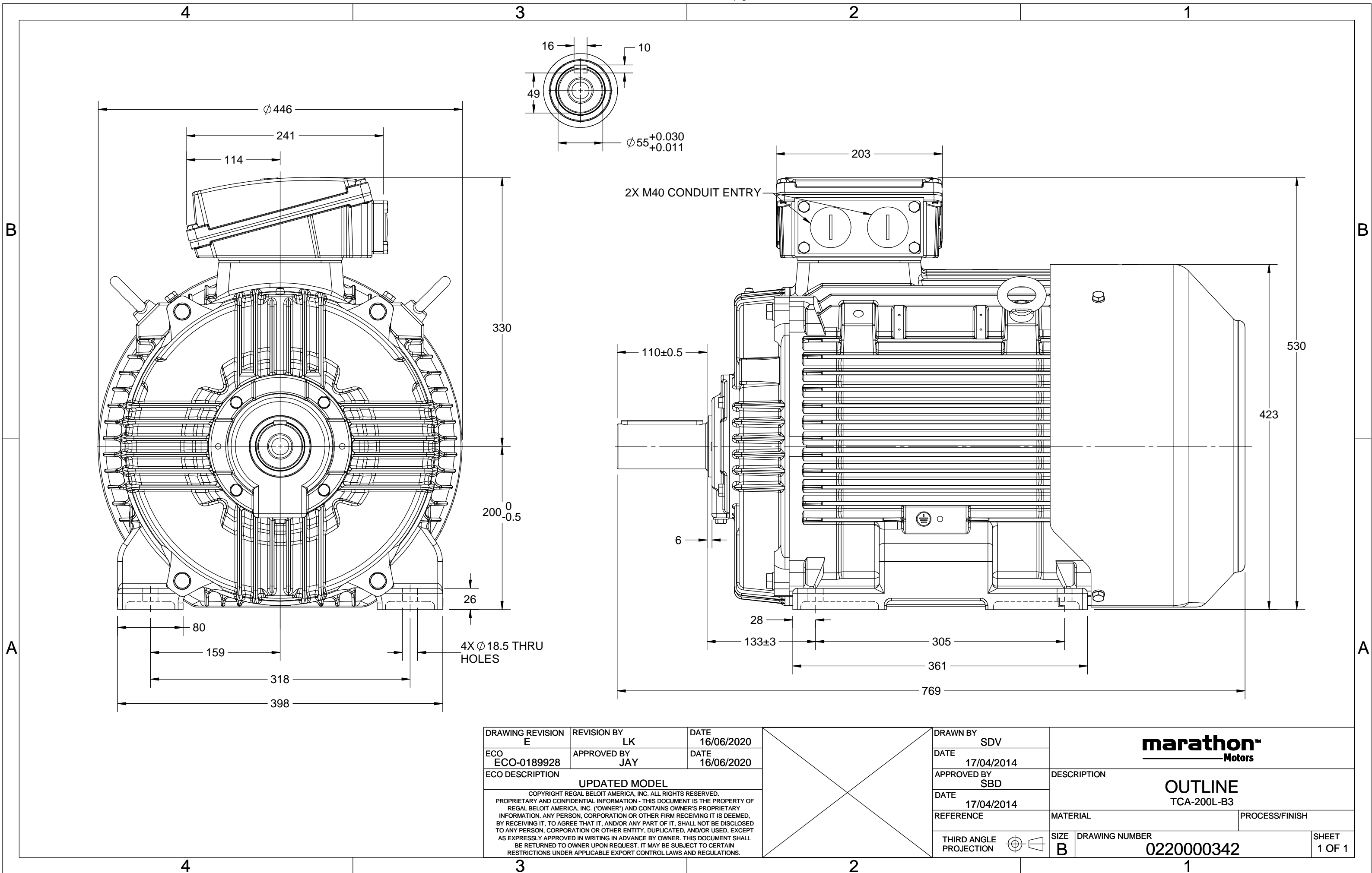
### Nameplate Specifications

Output HP	40 Hp	Output KW	30.0 kW
Frequency	60 Hz	Voltage	380 V
Current	7.9 A	Speed	1782 rpm
Service Factor	1.25	Phase	3
Efficiency	94.1 %	Power Factor	0.84
Duty	S1	Insulation Class	F
Frame	200M/L	Enclosure	Totally Enclosed Fan Cooled
Thermal Protection	No Protection	Ambient Temperature	40 °C
Drive End Bearing Size	6312	Opp Drive End Bearing Size	6212
UL	No	CSA	No
CE	No	IP Code	55
Number of Speeds	1		

### Technical Specifications

Electrical Type	Squirrel Cage	Starting Method	Direct On Line
Poles	4	Rotation	Clockwise
Mounting	B3	Motor Orientation	Horizontal
Drive End Bearing	C3	Opp Drive End Bearing	C3
Frame Material	Cast	Shaft Type	Keyed
Overall Length	769 mm	Frame Length	370 mm
Shaft Diameter	55 mm	Shaft Extension	110 mm
Assembly/Box Mounting	TOP		
Outline Drawing	0220000342		

This is an uncontrolled document once printed or downloaded and is subject to change without notice. Date Created:12/02/2022



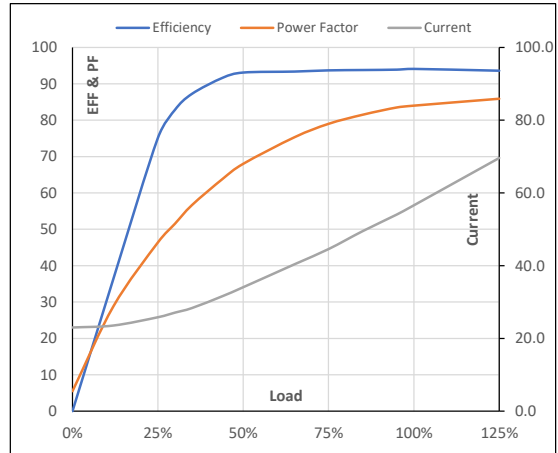
Model No. 1011593

Enclosure	U (V)	Δ / Y Conn	f [Hz]	P [kW]	P [hp]	I [A]	n [RPM]	T [kgm]	T [Nm]	IE Class	Amb [°C]	Duty	Elevation [m]	Inertia [kg-m <sup>2</sup> ]	Weight [kg]
TEFC	380	Δ	60	30	40	56.6	1782	16.09	157.78	IR3	40	S1	1000	1.795	273

**Motor Load Data**

Load Point		NL	1/4FL	1/2FL	3/4FL	FL	5/4FL
Current	A	23.0	25.8	34.1	44.6	56.6	69.6
Torque	Nm	0.0	39.7	79.5	119.6	157.8	200.4
Speed	r/min	1800	1796	1791	1787	1782	1777
Efficiency	%	0.0	75.1	93.1	93.7	94.1	93.6
Power Factor	%	5.5	46.4	68.0	79.0	84.0	85.9

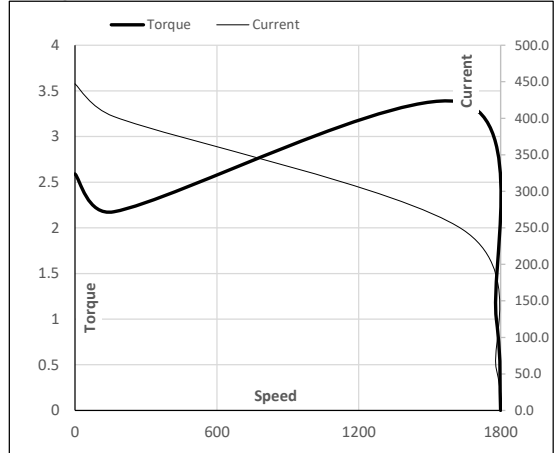
**Performance vs Load Chart**



**Motor Speed Torque Data**

Load Point		LR	P-Up	BD	Rated	NL
Speed	r/min	0	164	1639	1782	1800
Current	A	447.1	402.4	247.7	56.6	23.0
Torque	pu	2.6	2.2	3.4	1	0

**Starting Characteristics Chart**



**NOTE** Refer data sheet for applicable standard and tolerances on performance parameters

Issued By

Issued Date